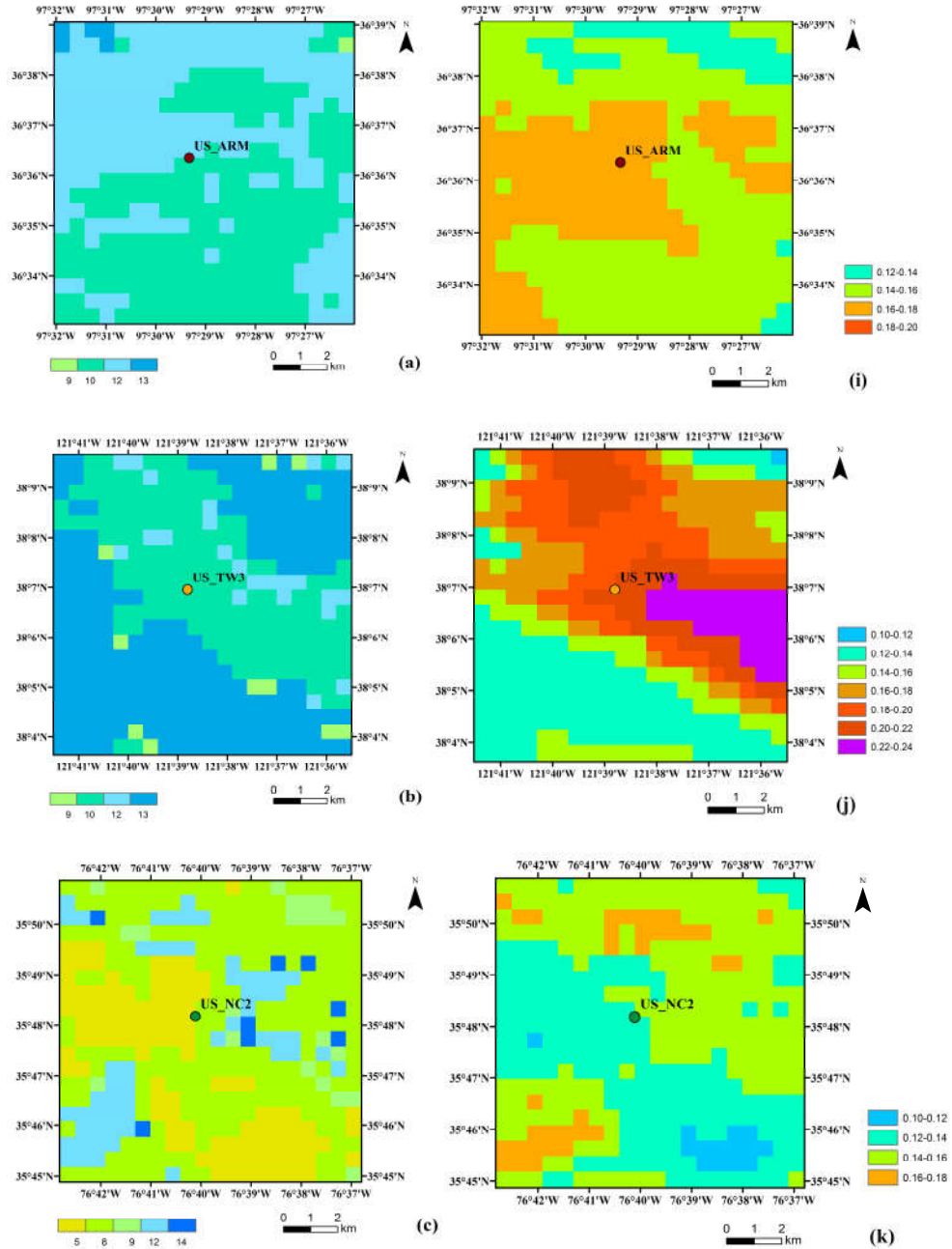
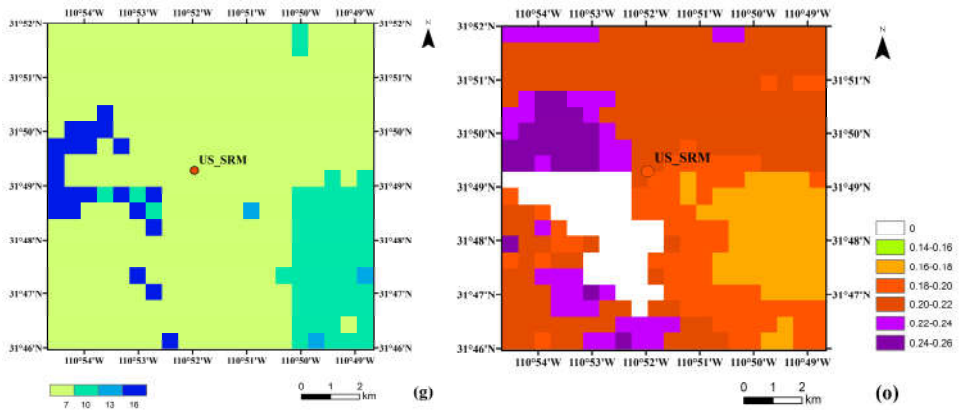
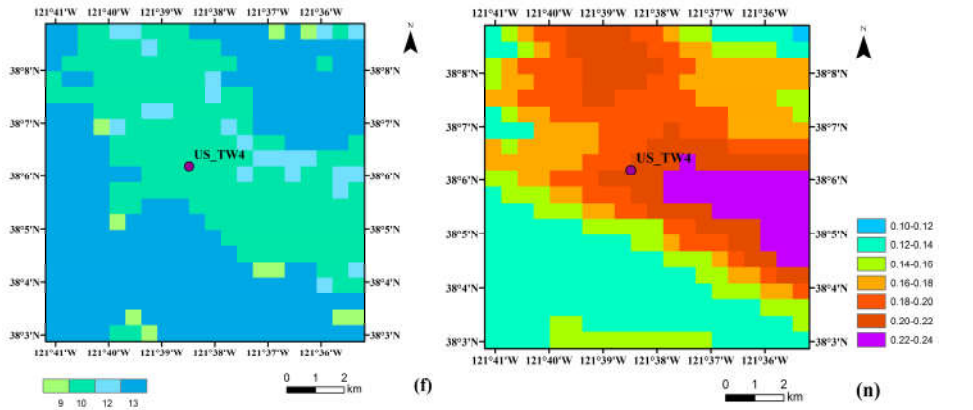
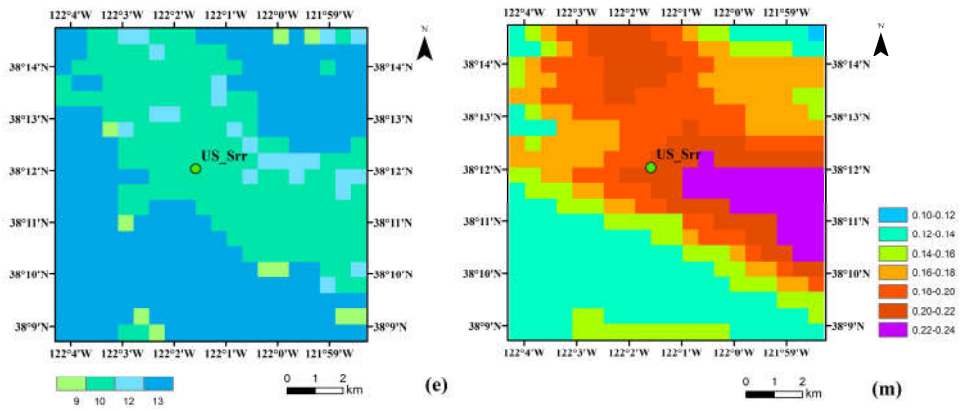
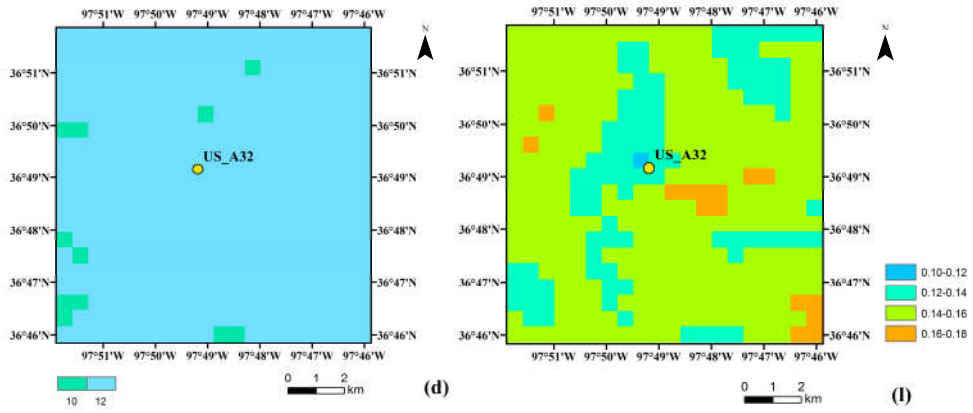


Supplementary material

S1. Land cover map from MCD12Q1 and the blue-sky albedo from MCD43A3 over the other 8 AmeriFlux sites





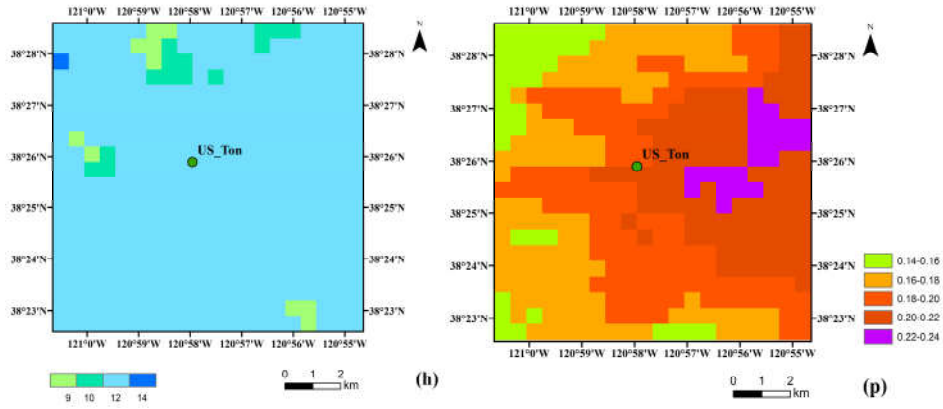


Figure S1. Land cover map from MCD12Q1 over US_ARM (a), US_TW3 (b), US_NC2 (c), US_A32 (d), US_Srr (e), US_TW4 (f), US_SRM (g), US_Ton (h) and MCD43A3 blue-sky albedo over US_ARM (i), US_TW3 (j), US_NC2 (k), US_A32 (l), US_Srr (m), US_TW4 (n), US_SRM (o), US_Ton (p) on 4th June, 2016. 1 indicates that the land cover type is ENF (Evergreen Needleleaf Forests), 4: DBF (Deciduous Broadleaf Forests), 5: MF (Mixed Forests), 7: OSH (Open Shrublands), 8: WSA (Woody Savannas), 9: SAV (Savannas), 10: GRA (Grasslands), 11: WET (Permanent Wetlands), 12: CRO (Croplands), 13: UBL (Urban and Built-up Lands), 14: CRO/NVM (Cropland/Natural Vegetation Mosaics), 16: Barren. The AmeriFlux sits are located at the center of each map.