

Correction

Correction: Elfadaly, A.; Abate, N.; Masini, N.; Lasaponara, R. SAR Sentinel 1 Imaging and Detection of Palaeo-Landscape Features in the Mediterranean Area. *Remote Sens.* 2020, 12, 2611

Abdelaziz Elfadaly ^{1,2,*}, Nicodemo Abate ^{1,3} , Nicola Masini ¹  and Rosa Lasaponara ¹

¹ Italian National Research Council, C.da Santa Loja, Tito Scalo, 85050 Potenza, Italy; nicodemo.abate@imaa.cnr.it (N.A.); n.masini@ibam.cnr.it (N.M.); rosa.lasaponara@imaa.cnr.it (R.L.)

² National Authority for Remote Sensing and Space Sciences, Cairo 1564, Egypt

³ DICEM (Dipartimento delle Culture Europee e del Mediterraneo), University of Basilicata, Via Nazario Sauro 85, 85100 Potenza, Italy

* Correspondence: abdelaziz.elfadaly@imaa.cnr.it; Tel.: +39-327-709-0396

Received: 30 August 2020; Accepted: 1 September 2020; Published: 5 September 2020



The authors wish to make the following corrections to this paper [1]: Due to mislabeling, replace:

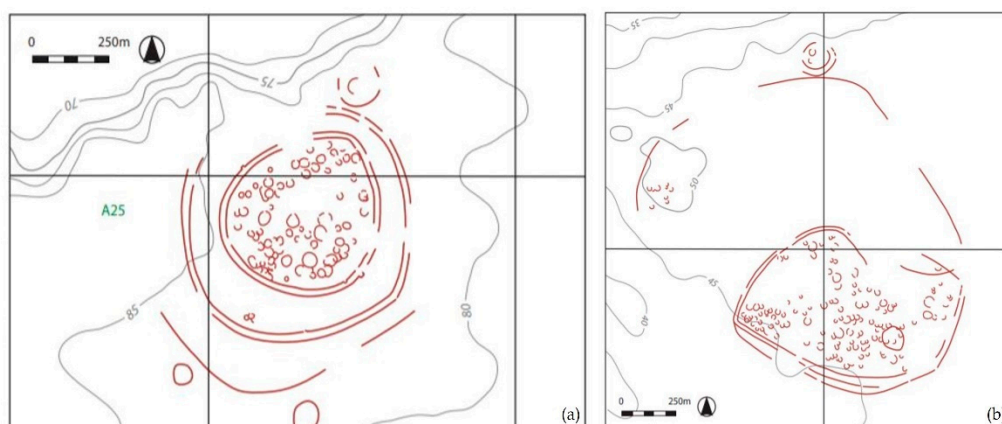


Figure 6. Typical Neolithic settlements in the Tavoliere delle Puglie: (a) settlement of Masseria Schifata; (b) settlement of Passo di Corvo [36].

With

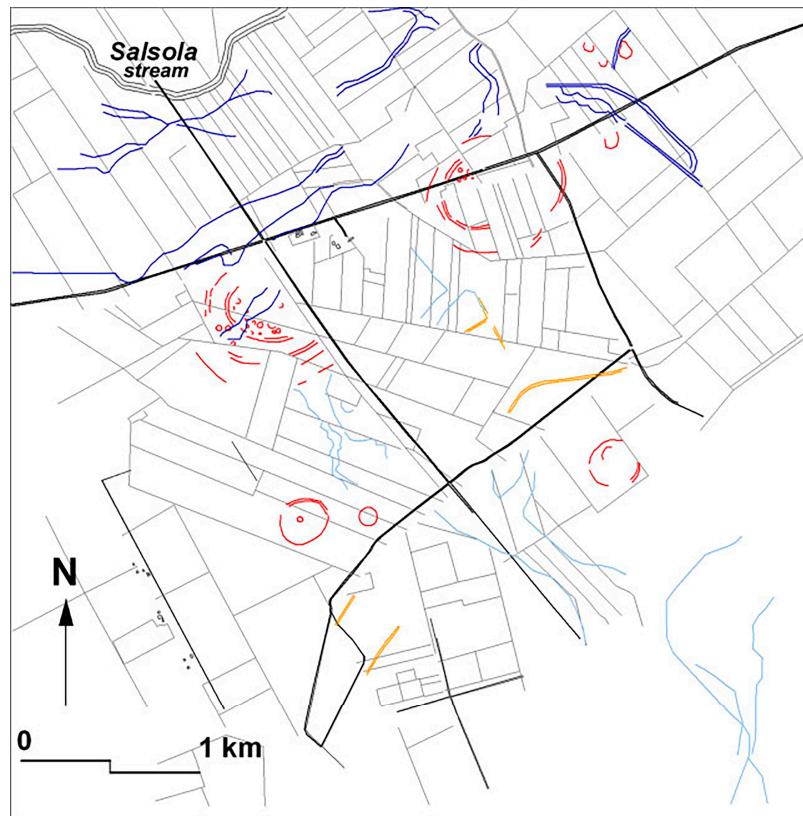


Figure 6. Example of evidence of the ancient landscape and archaeological remains in Apulia: (i) blue lines represent palaeoriver; (ii) red lines represent the Neolithic settlements of Palmori and Schifata; (iii) orange lines represent roads; (iv) light blue lines represent hydromorphic marks related to an ancient marshy environment; (v) black and grey lines represent modern roads, channels and fields [14] Figure 5.

The authors would like to apologize for any inconvenience caused to the readers by these changes.

Reference

1. Elfadaly, A.; Abate, N.; Masini, N.; Lasaponara, R. SAR Sentinel 1 Imaging and Detection of Palaeo-Landscape Features in the Mediterranean Area. *Remote Sens.* **2020**, *12*, 2611. [[CrossRef](#)]



© 2020 by the authors. Licensee MDPI, Basel, Switzerland. This article is an open access article distributed under the terms and conditions of the Creative Commons Attribution (CC BY) license (<http://creativecommons.org/licenses/by/4.0/>).