

Limitations of Predicting Substrate Classes on a Sedimentary Complex but Morphologically Simple Seabed

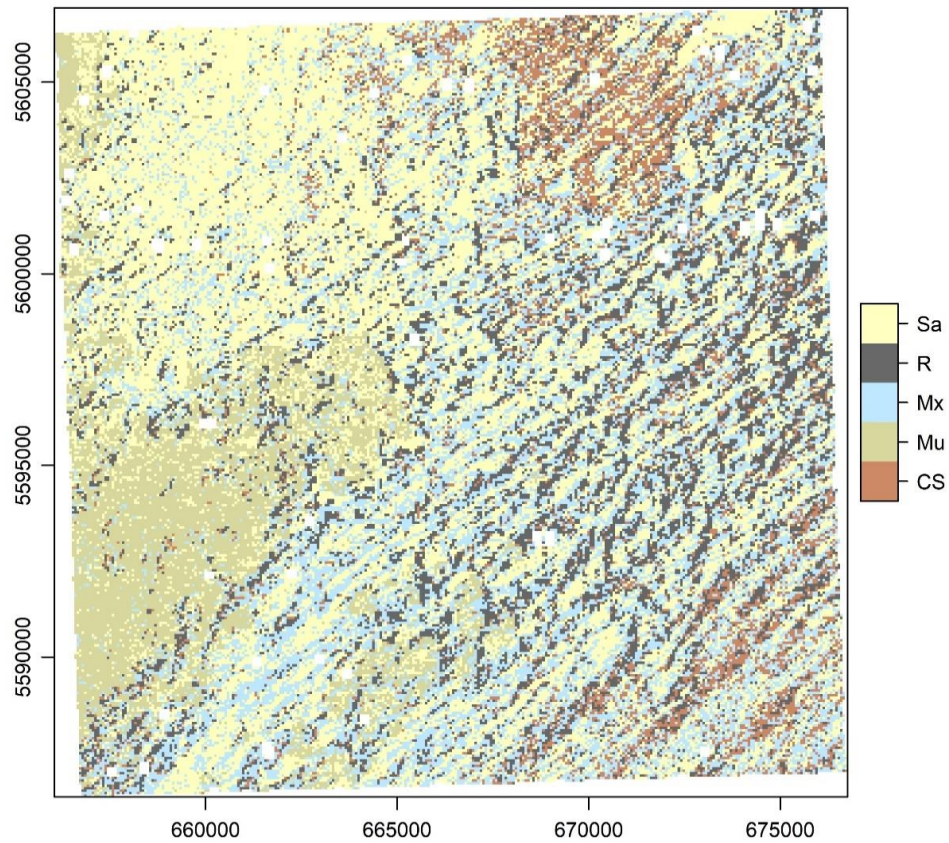


Figure S1. Substrate map of Method A. Projection UTM Zone 29N, Ellipsoid WGS 84.

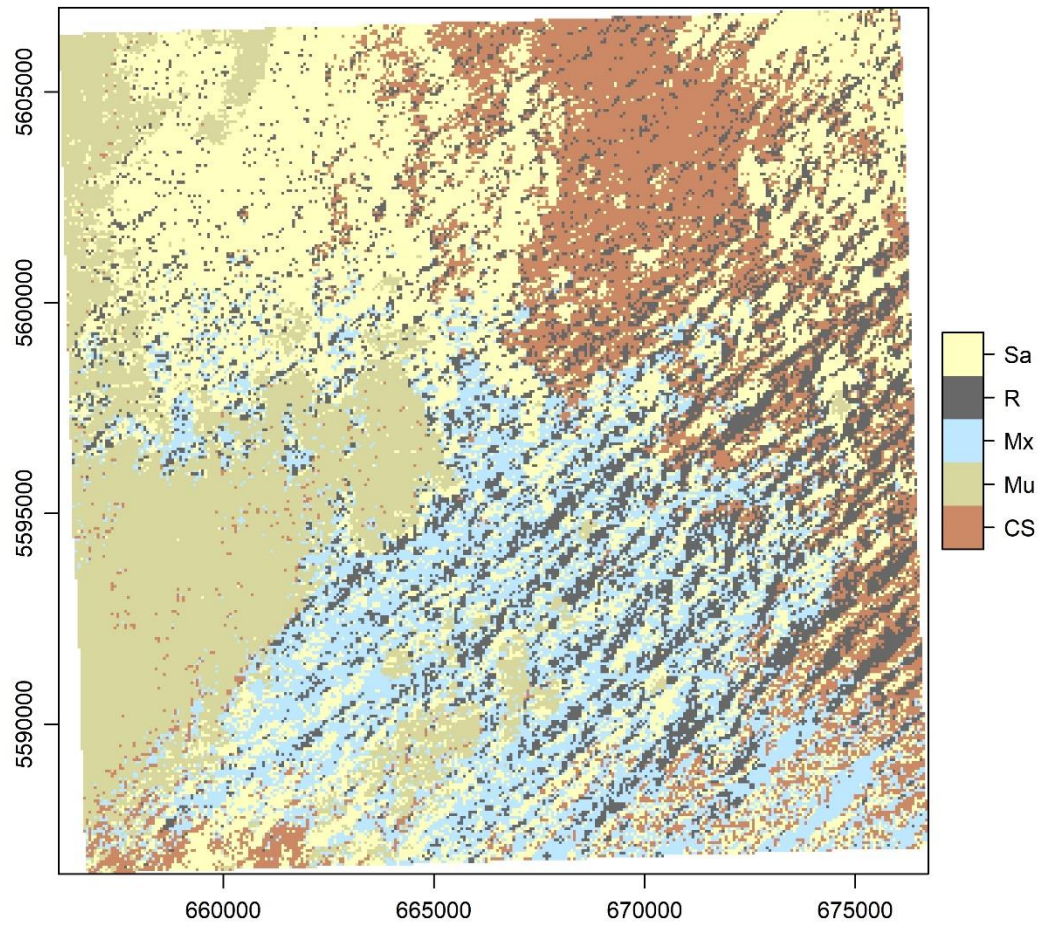


Figure S2. Substrate map of Method B. Projection UTM Zone 29N, Ellipsoid WGS 84.

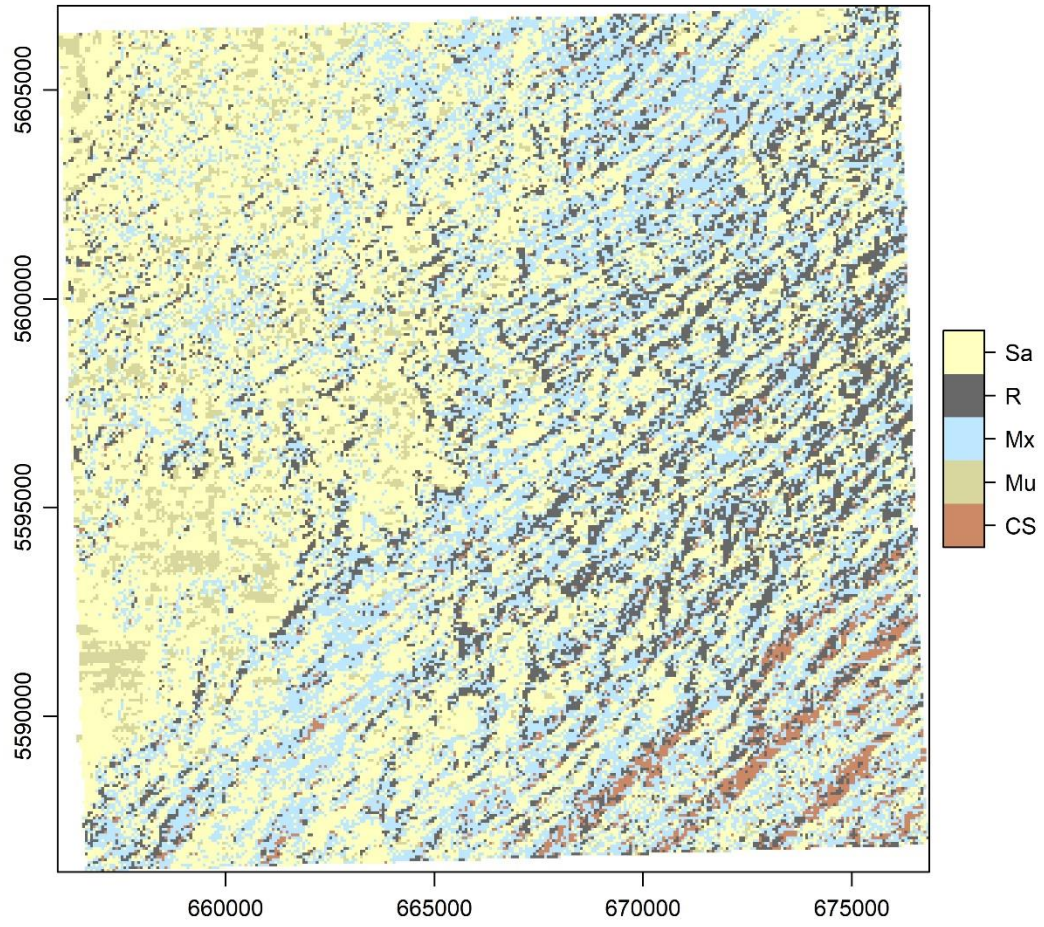


Figure S3. Substrate map of Method C. Projection UTM Zone 29N, Ellipsoid WGS 84.

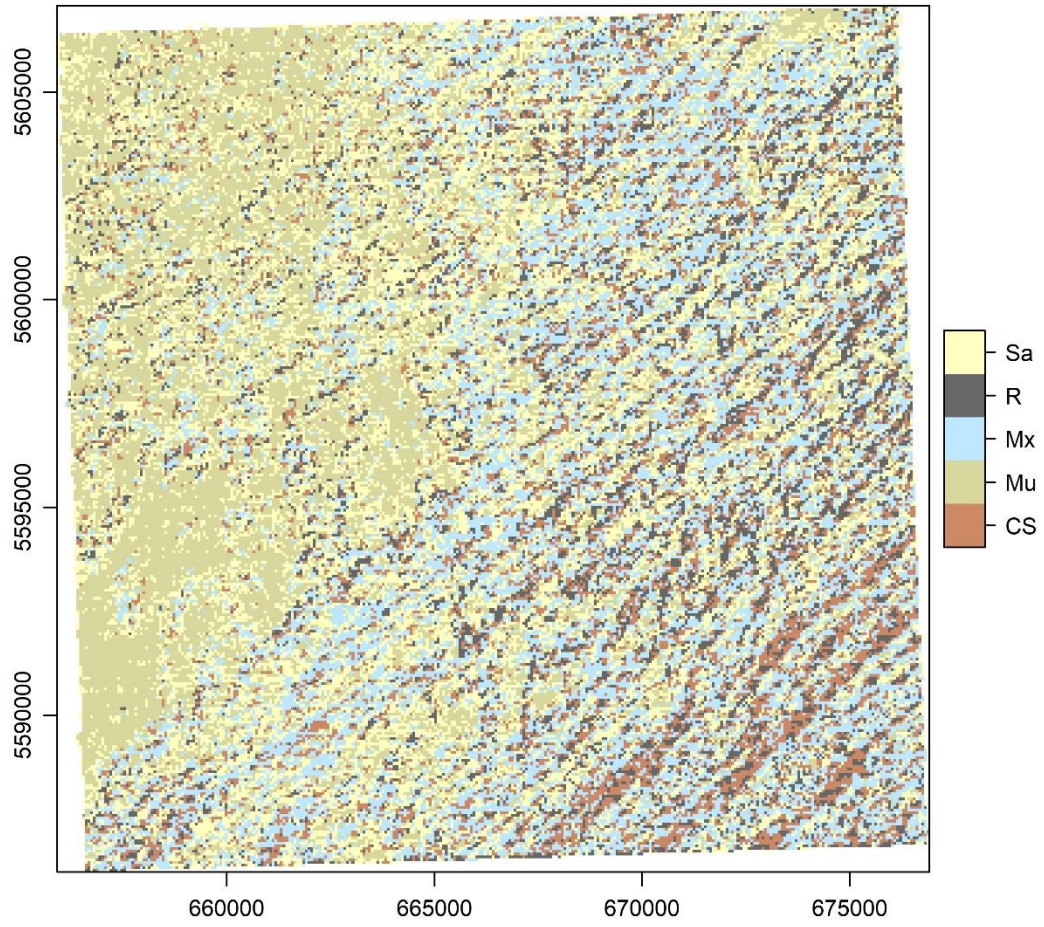


Figure S4. Substrate map of Method D. Projection UTM Zone 29N, Ellipsoid WGS 84.

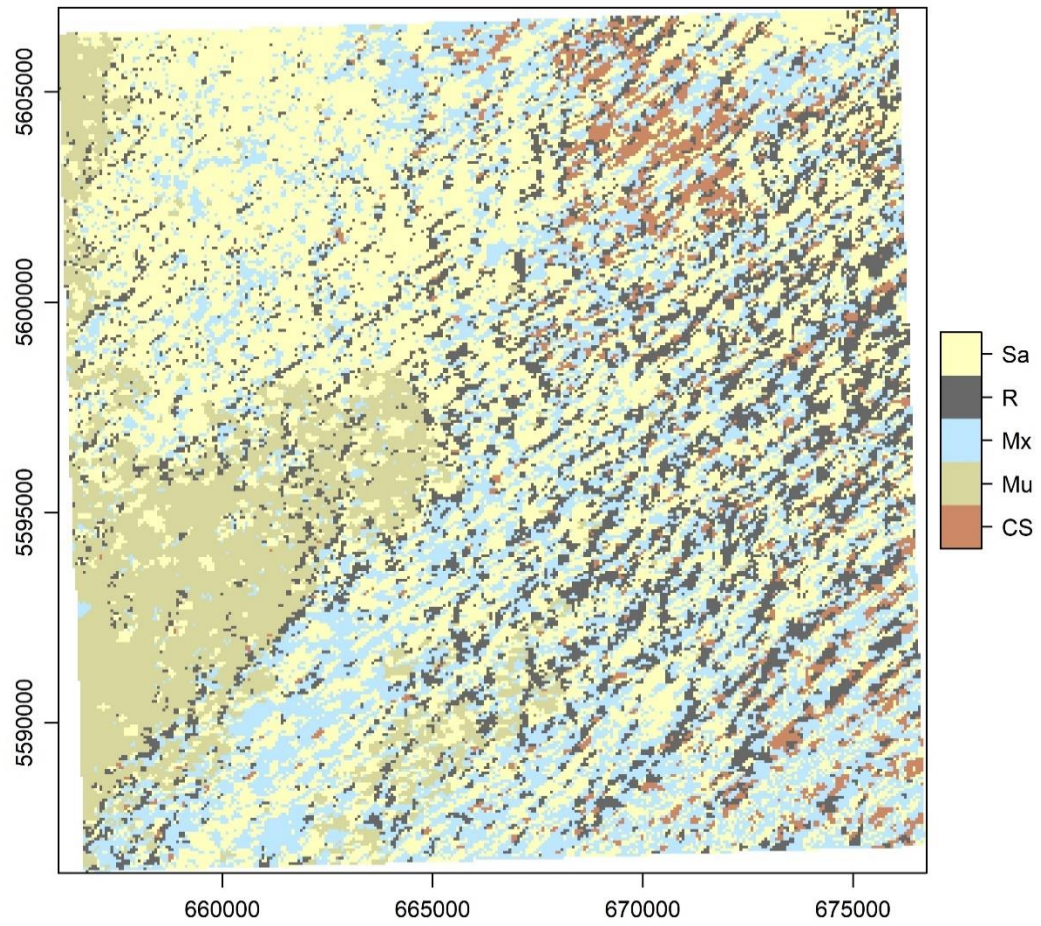


Figure S5. Substrate map of Method E. Projection UTM Zone 29N, Ellipsoid WGS 84.

Table S1. Contingency table of Method A. OE – omission error; CE – commission error.

		Reference					Sum	CE (%)
		CS	Mu	Mx	R	Sa		
Prediction	CS	4	0	5	1	2	12	66.67
	Mu	1	5	2	0	4	12	58.33
	Mx	4	3	14	0	4	25	44.00
	R	3	0	1	25	2	31	19.35
	Sa	2	10	3	1	20	36	44.44
	Sum	14	18	25	27	32		
OE (%)		71.43	72.22	44.00	7.41	37.50		

Table S2. Contingency table of Method B. OE – omission error; CE – commission error.

		Reference					Sum	CE (%)
		CS	Mu	Mx	R	Sa		
Prediction	CS	4	0	6	1	4	15	73.33
	Mu	1	9	1	0	6	17	47.06
	Mx	5	2	6	2	4	19	68.42
	R	1	0	5	24	2	32	25.00
	Sa	3	7	7	0	16	33	51.52
	Sum	14	18	25	27	32		
OE (%)		71.43	50.00	76.00	11.11	50.00		

Table S3. Contingency table of Method C. OE – omission error; CE – commission error.

		Reference					Sum	CE (%)
		CS	Mu	Mx	R	Sa		
Prediction	CS	2	0	3	1	0	6	66.67
	Mu	0	3	0	0	2	5	40.00
	Mx	9	1	11	3	7	31	64.52
	R	0	0	4	23	3	30	23.33
	Sa	3	14	7	0	20	44	54.55
	Sum	14	18	25	27	32		
OE (%)		85.71	83.33	56.00	14.81	37.50		

Table S4. Contingency table of Method D. OE – omission error; CE – commission error.

		Reference					Sum	CE (%)
		CS	Mu	Mx	R	Sa		
Prediction	CS	4	2	3	3	1	13	69.23
	Mu	1	10	1	0	12	24	58.33
	Mx	6	0	12	5	9	32	62.50
	R	0	0	3	19	2	24	20.83
	Sa	3	6	6	0	8	23	65.22
	Sum	14	18	25	27	32		
	OE (%)	71.43	44.44	52.00	29.63	75.00		

Table S1. Contingency table of Method E. OE – omission error; CE – commission error.

		Reference					Sum	CE (%)
		CS	Mu	Mx	R	Sa		
Prediction	CS	2	1	4	1	1	9	77.78
	Mu	2	6	1	0	6	15	60.00
	Mx	5	1	11	4	7	28	60.71
	R	4	0	2	22	2	30	26.67
	Sa	1	10	7	0	16	34	52.94
	Sum	14	18	25	27	32		
	OE (%)	85.71	66.67	56.00	18.52	50.00		

Table 6. Results of the accuracy assessment. Overall map accuracy (as shown in Figure 5).

	Method A	Method B	Method C	Method D	Method E	Ensemble
<i>No Information Rate</i>	27.59%	27.59%	27.59%	27.59%	27.59%	27.59%
<i>Lower confidence limit</i>	49.10%	41.42%	41.42%	36.41%	39.74%	44.81%
<i>Overall accuracy</i>	58.62%	50.86%	50.86%	45.69%	49.14%	54.31%
<i>Upper confidence limit</i>	67.69%	60.26%	60.26%	55.19%	58.58%	63.59%
<i>P-Value [Acc > NIR]</i>	2.6E-12	9.6E-08	9.6E-08	2.4E-05	6.9E-07	1.3x10 ⁻⁹