

Supplementary materials for:

The surface displacement response of a tropical glacier to intra and inter annual forcing, Cordillera Blanca, Peru

Andrew Kos¹, Florian Amann², Tazio Strozzi³, Julian Osten², Florian Wellmann⁴, Mohammadreza Jalali², Anja Dufresne²

¹Terrasense Switzerland Ltd, Buchs 9470, Switzerland

²RWTH University, Chair of Engineering Geology and Hydrogeology, 52062 Aachen, Germany

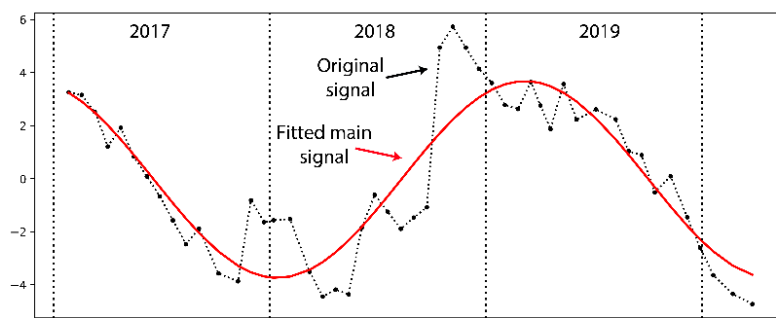
³Gamma Remote Sensing Ltd, Gümliigen 3073, Switzerland

⁴RWTH University, Unit of Computational Geoscience & Reservoir Engineering, 52062 Aachen, Germany

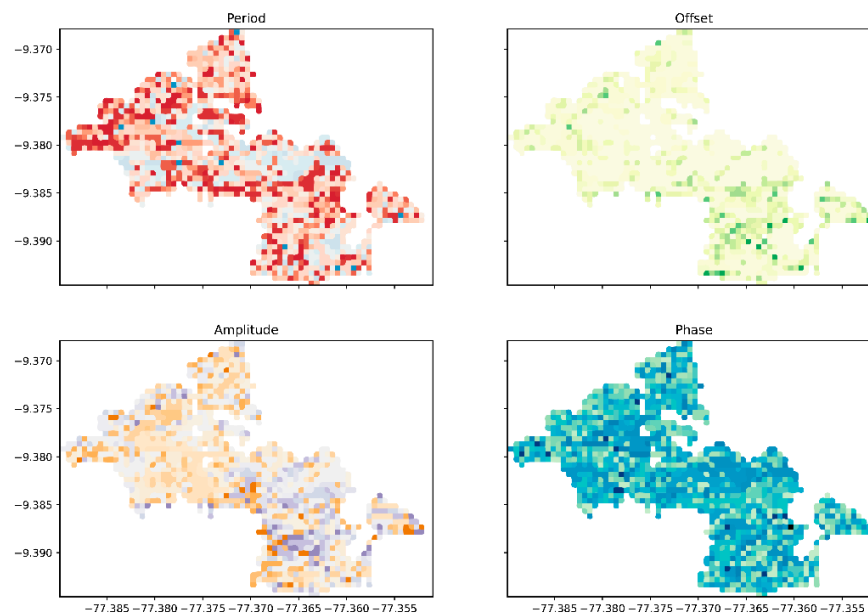
Content of this file

Figures S1 to S10

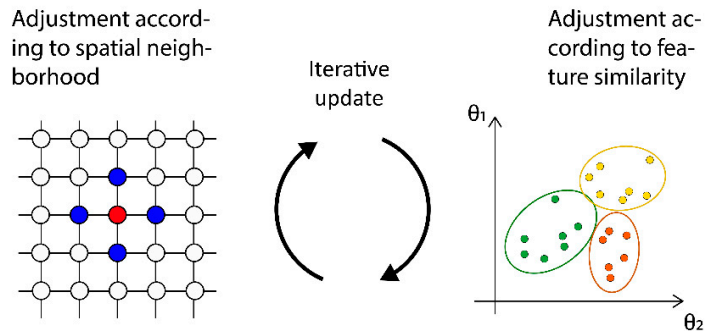
(a)



(b)



(c)



(d)

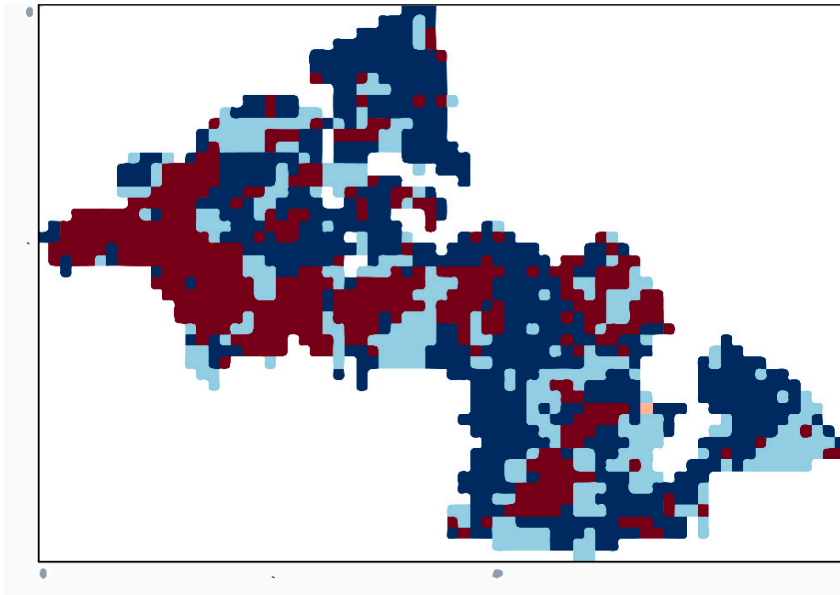


Figure S1: Conceptual representation of the clustering approach: **(a)** step 1, extraction of the dominant signal in the time series; **(b)** step 2, visualization of the spatial distribution of period, offset, amplitude and phase of the dominant signals; **(c)** step 3, schematic representation of the unsupervised machine learning algorithm (HNRFGMM), combining spatial proximity and feature similarity in an iterative Bayesian approach; **(d)** step 4, spatial distribution of cluster results (see Fig. 7c in main text for results within a spatial context).

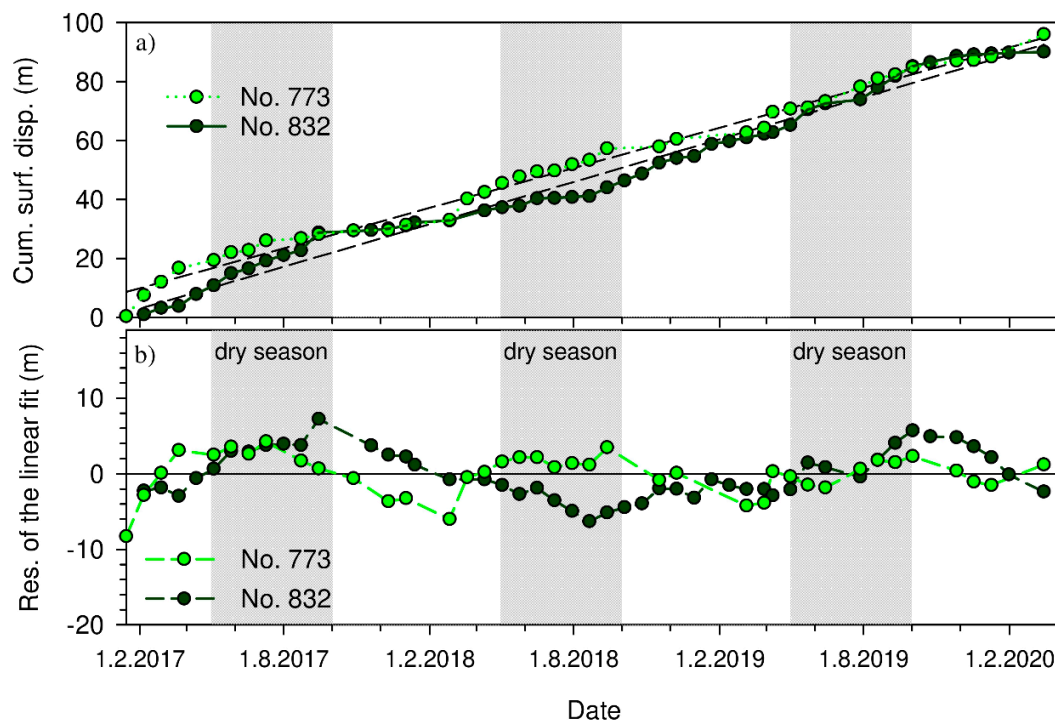


Figure S2: Displacement time series and residuals for selected points in Zone S3 (Figure 1, main text)

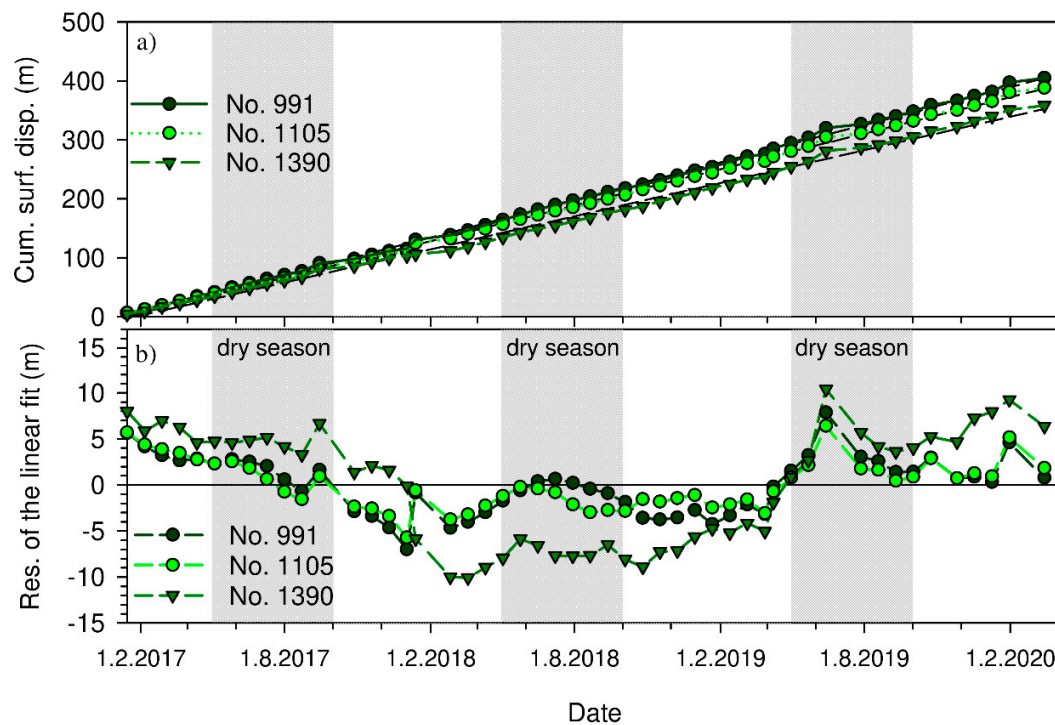


Figure S3: Displacement time series and residuals for selected points in Zone S4a (Figure 1, main text)

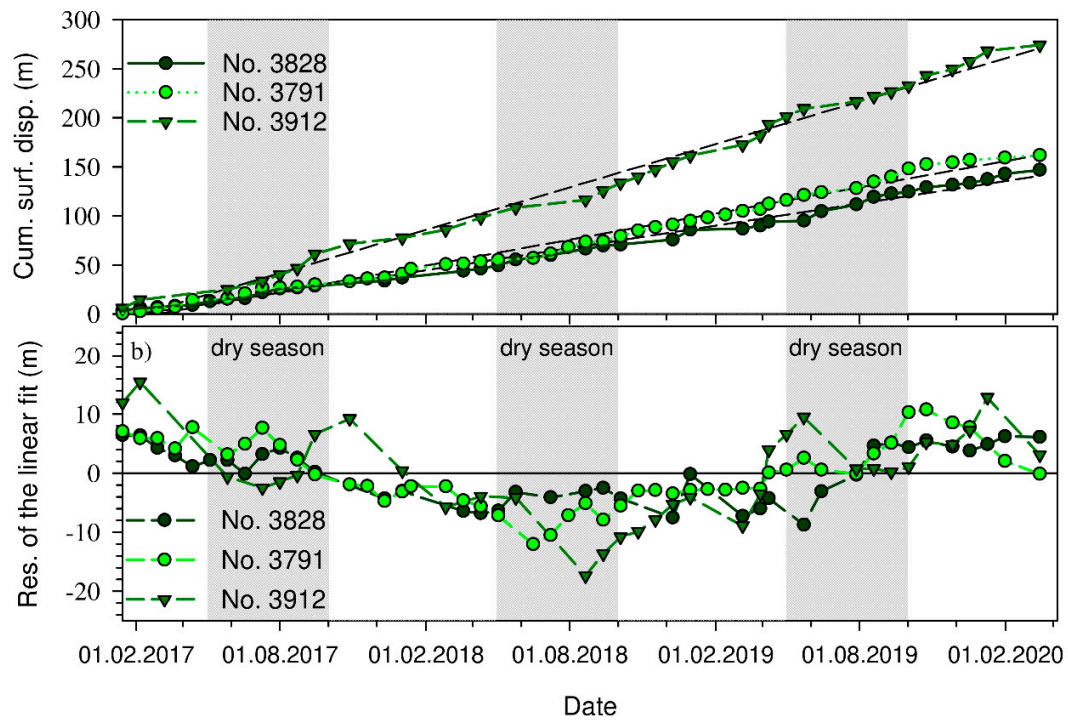


Figure S4: Displacement time series and residuals for selected points in Zone E1 (Figure 1, main text)

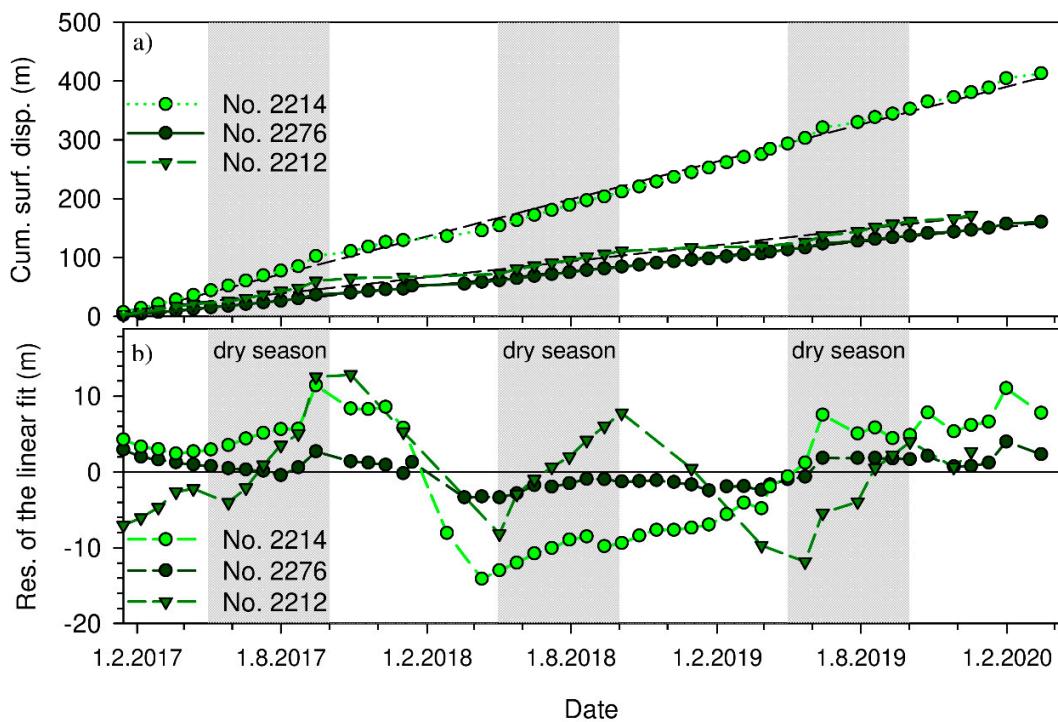


Figure S5: Displacement time series and residuals for selected points in Zone E2 (Figure 1, main text)

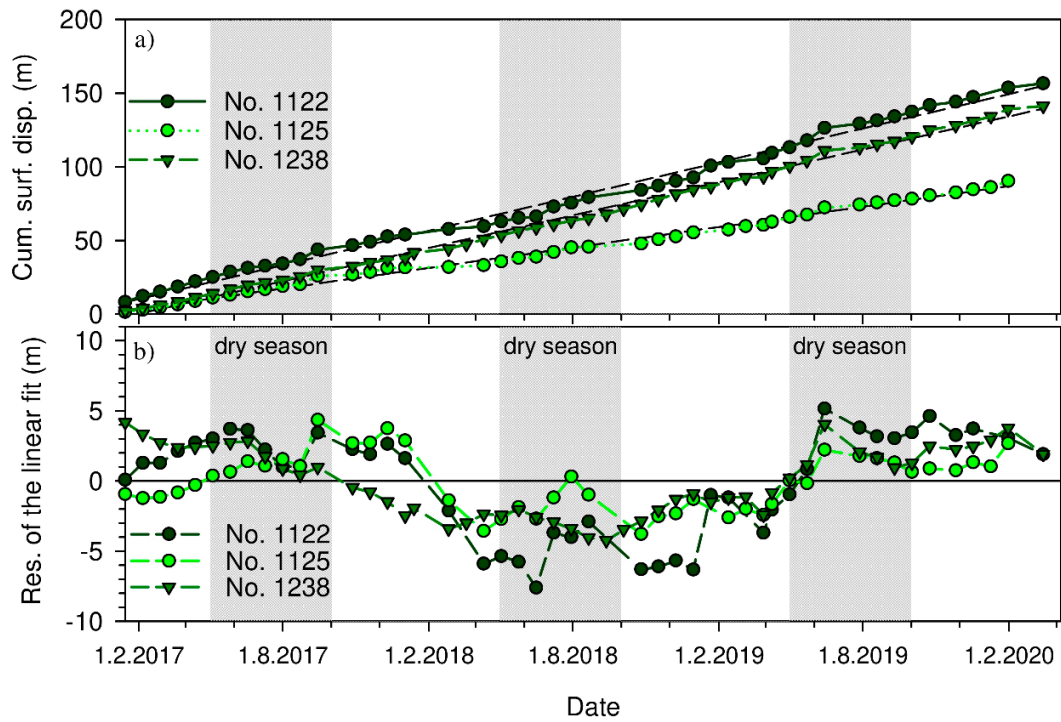


Figure S6: Displacement time series and residuals for selected points in Zone S5 (Figure 1, main text)

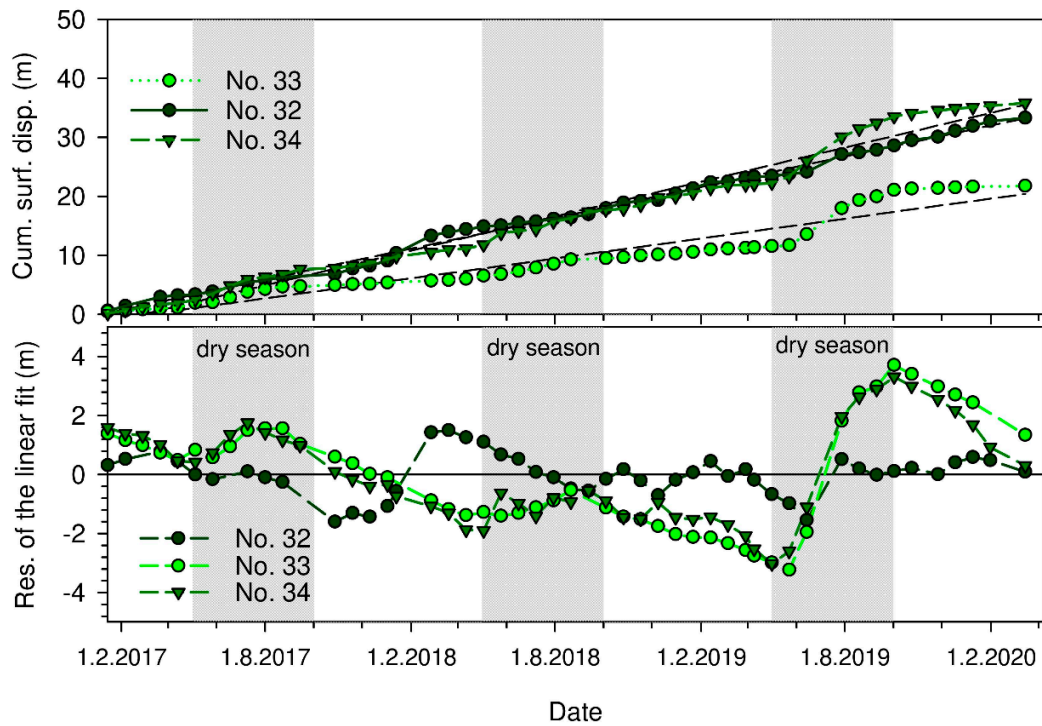


Figure S7: Displacement time series and residuals for selected points in Zone S1 (Figure 1, main text)

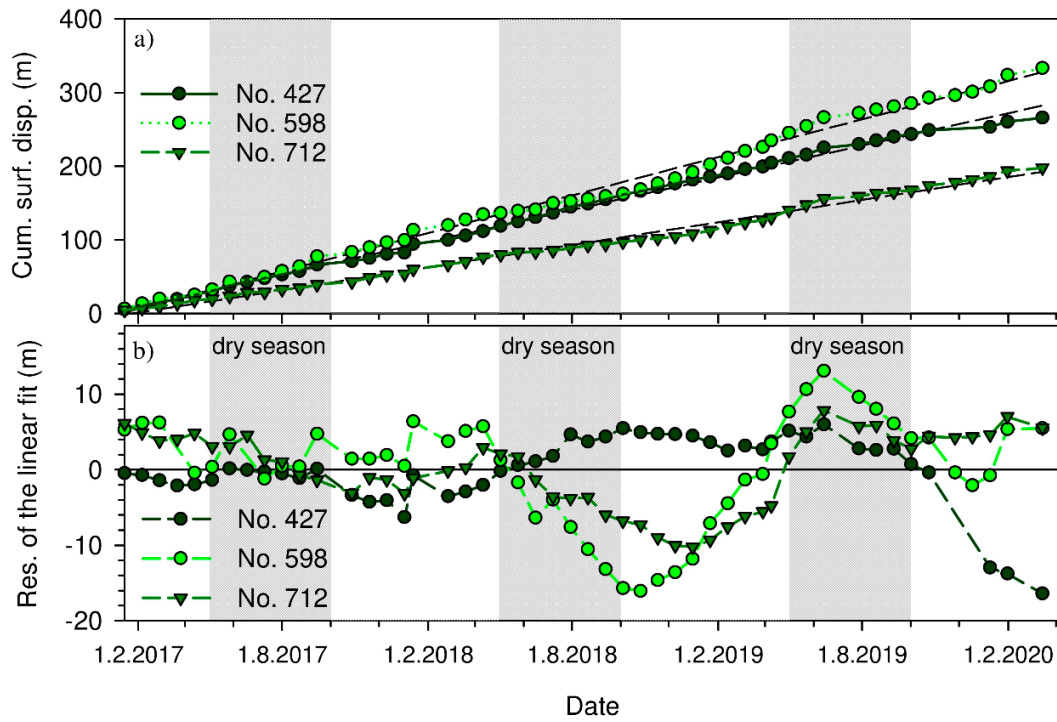


Figure S8: Displacement time series and residuals for selected points in Zone S2 (Figure 1, main text)

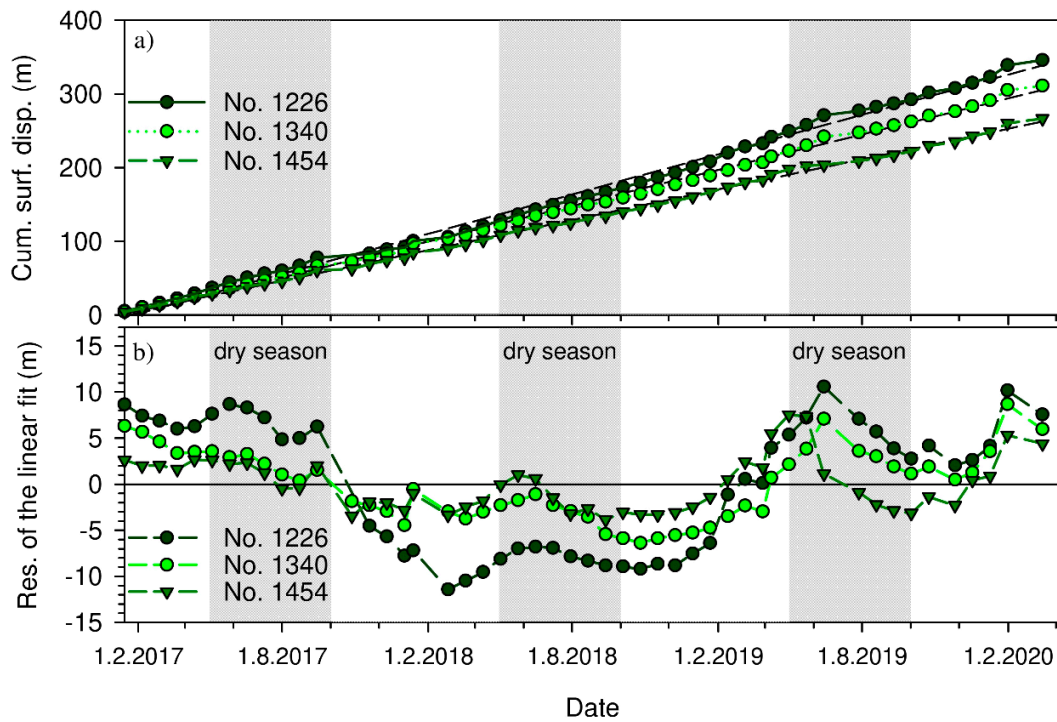


Figure S9: Displacement time series and residuals for selected points in Zone S4b (Figure 1, main text)

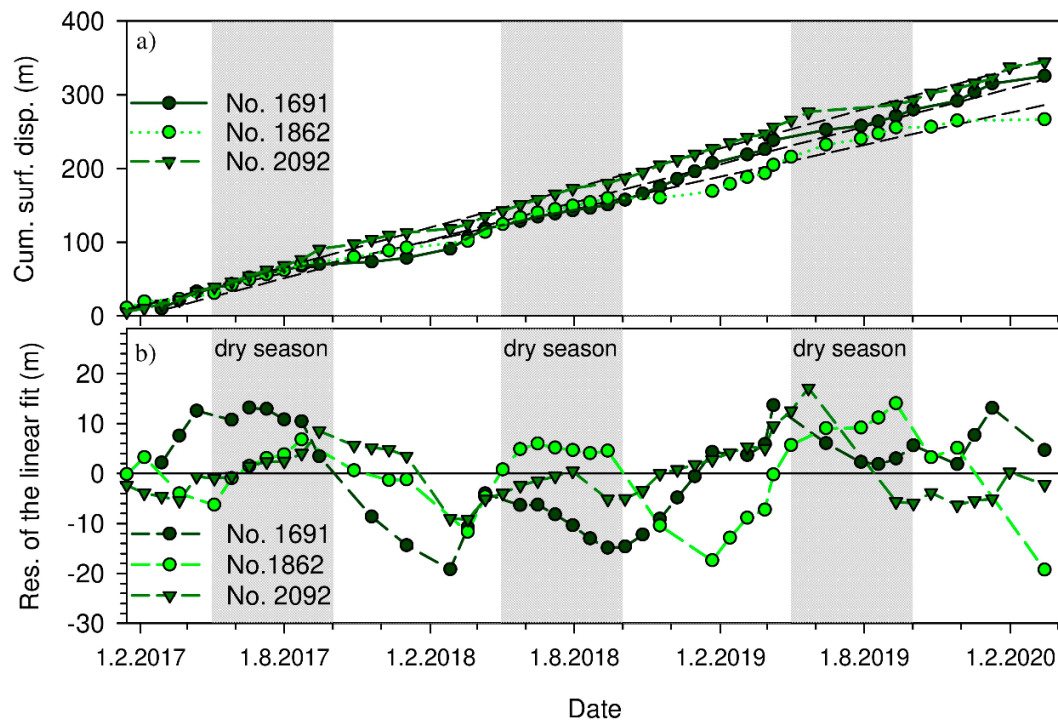


Figure S10: Displacement time series and residuals for selected points in Zone E3 (Figure 1, main text)