

Supplementary Materials: Strain-rates from GPS Measurements in the Ordos Block, China: Implications for Geodynamics and Seismic Hazards

Shoubiao Zhu

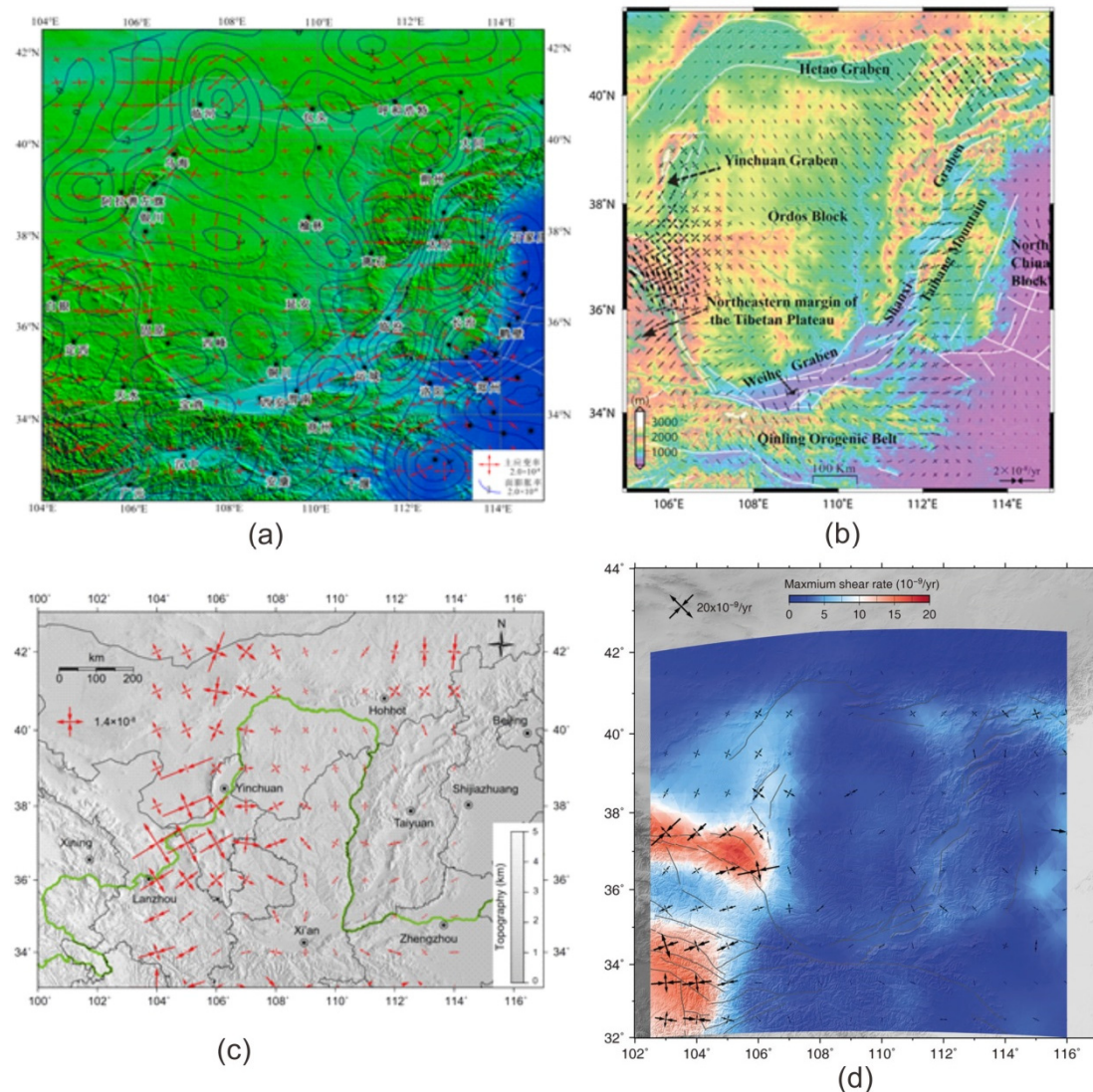


Figure S1. Comparison of different principal strain rates from different authors based on almost the same GPS data. (a) Principal strain rates [1] (in Figure 3); (b) Principal strain rates [2] (in Figure 7); (c) Principal strain rates [3] (in Figure 5); (d) Principal strain rates [4] Figure 3(b).

References

1. Cui, D.; Hao, M.; Li, Y.; Wang, W.; Qin, S.; Li, C. Present-day crustal movement and strain of the surrounding area of Ordos Block derived from repeated GPS observations. *Chin. J. Geophys.* **2016**, *59*, 3646–3661. (in Chinese with an English abstract).
2. Qu, W.; Lu, Z.; Zhang, M.; Zhang, Q.; Wang, Q.; Zhu, W.; Qu, F. Crustal strain fields in the surrounding areas of the Ordos Block, central China, estimated by the least-squares collocation technique. *J. Geodyn.* **2017**, *106*, 1–11.
3. Li, S.; Li, C.; Zhou, Q. Kinematic analysis of the Ordos Block and surrounding area based on GPS data: An initiative–passive vortex structure model. *Arab. J. Geosci.* **2018**, *11*, 627, <https://doi.org/10.1007/s12517-018-3980-x>.
4. Hao, M.; Wang, Q.; Zhang, P.; Li, Z.; Li, Y.; Zhuang, W. “Frame wobbling” causing crustal deformation around the Ordos Block. *Geophys. Res. Lett.* **2021**, *48*, e2020GL091008. <https://doi.org/10.1029/2020GL091008>.