

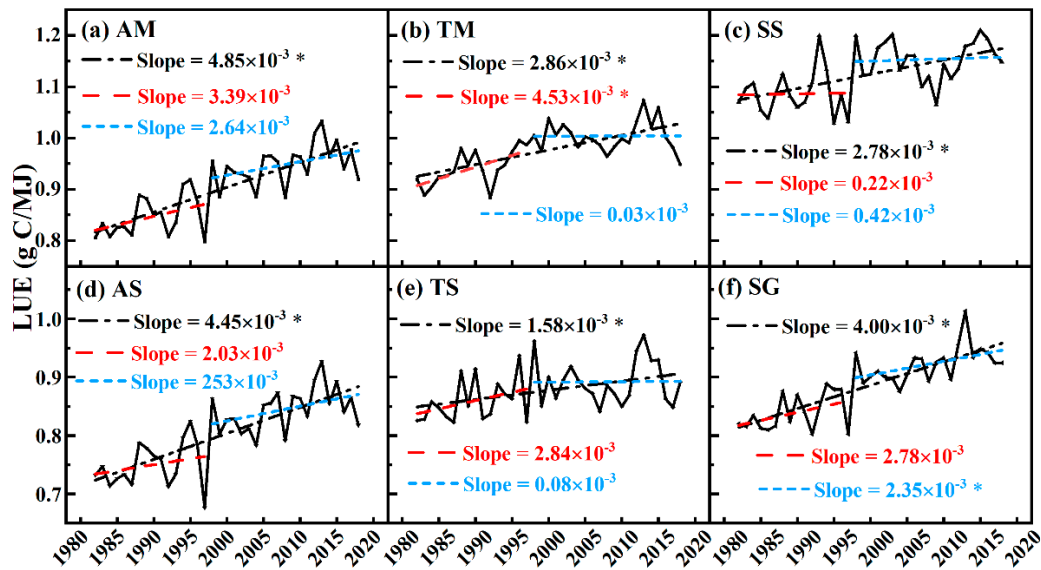
# Altered Trends in Light Use Efficiency of Grassland Ecosystem in Northern China

Liuhuan Yuan <sup>†</sup>, Tianyou Zhang <sup>†</sup>, Hongbin Yao, Cheng Zheng and Zhongming Wen <sup>\*</sup>

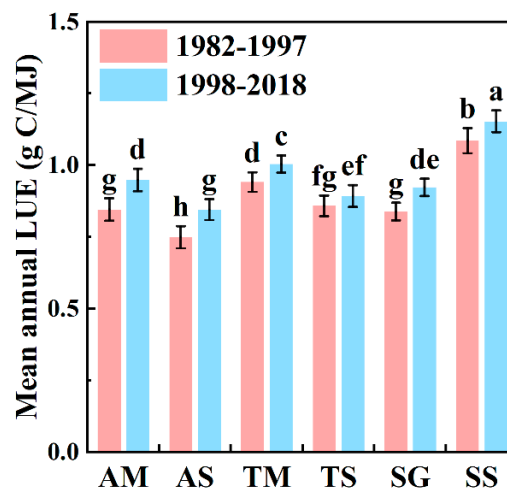
College of Grassland Agriculture, Northwest A&F University, Xianyang 712100, China; 17879551656@nwafu.edu.cn (L.Y.); t\_youzhang@nwafu.edu.cn (T.Z.); 2021056776@nwafu.edu.cn (H.Y.); zhengcheng@nwafu.edu.cn (C.Z.)

<sup>\*</sup> Correspondence: zmwen@ms.iswc.ac.cn

<sup>†</sup> These authors contributed equally to this work.



**Figure S1.** Interannual dynamics of LUE in six grassland types, \* indicates a significant trend ( $p < 0.05$ ). AM, Alpine Meadow; AS, Alpine Steppe; TM, Temperate Meadow; TS, Temperate Steppe; SG, Sparse Grassland; SS, Sparse Shrubland.



**Figure S2.** The multi-year mean LUE in six grassland types. Data with the same letter are not significantly different ( $p > 0.05$ ). AM, Alpine Meadow; AS, Alpine Steppe; TM, Temperate Meadow; TS, Temperate Steppe; SG, Sparse Grassland; SS, Sparse Shrubland.