

Figure S1. Predicted soil moisture maps (%) using Sentinel-2 data for data collection days.

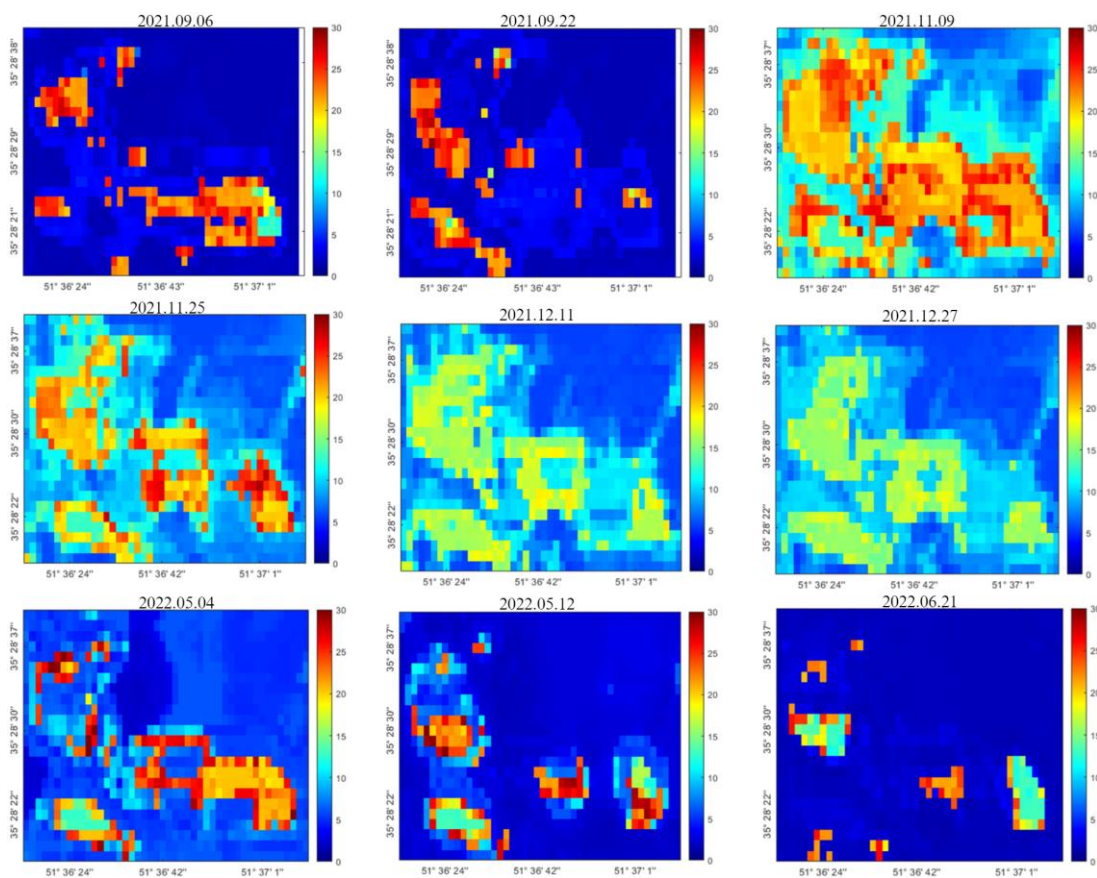


Figure S2. Predicted soil moisture maps (%) using Landsat-8/9 data for data collection days.

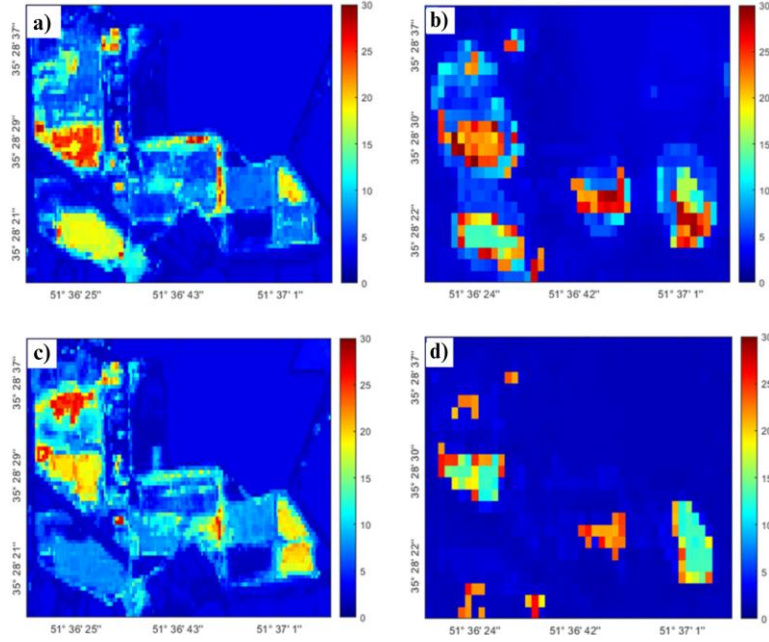


Figure S3. Predicted soil moisture maps (%) for 2022.05.12 using a) Sentinel-2 and b) Landsat-8/9 data and for 2022.06.21 using c) Sentinel-2 and d) Landsat-8/9 data.

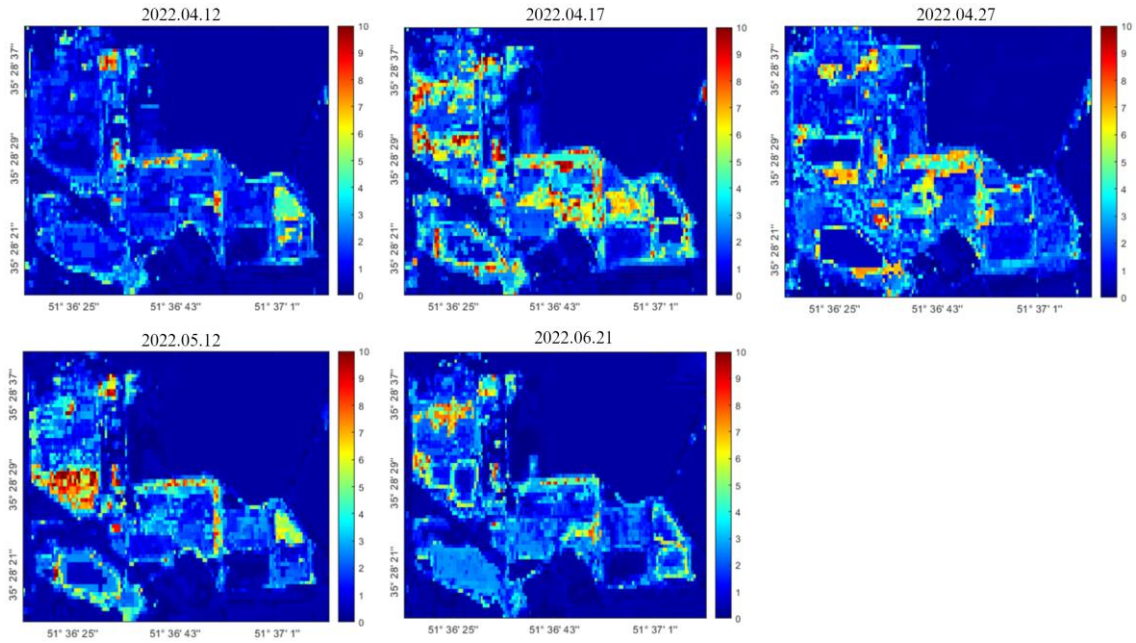


Figure S4. Uncertainty of predicted soil moisture maps (%) using Sentinel-2 data for data collection days.

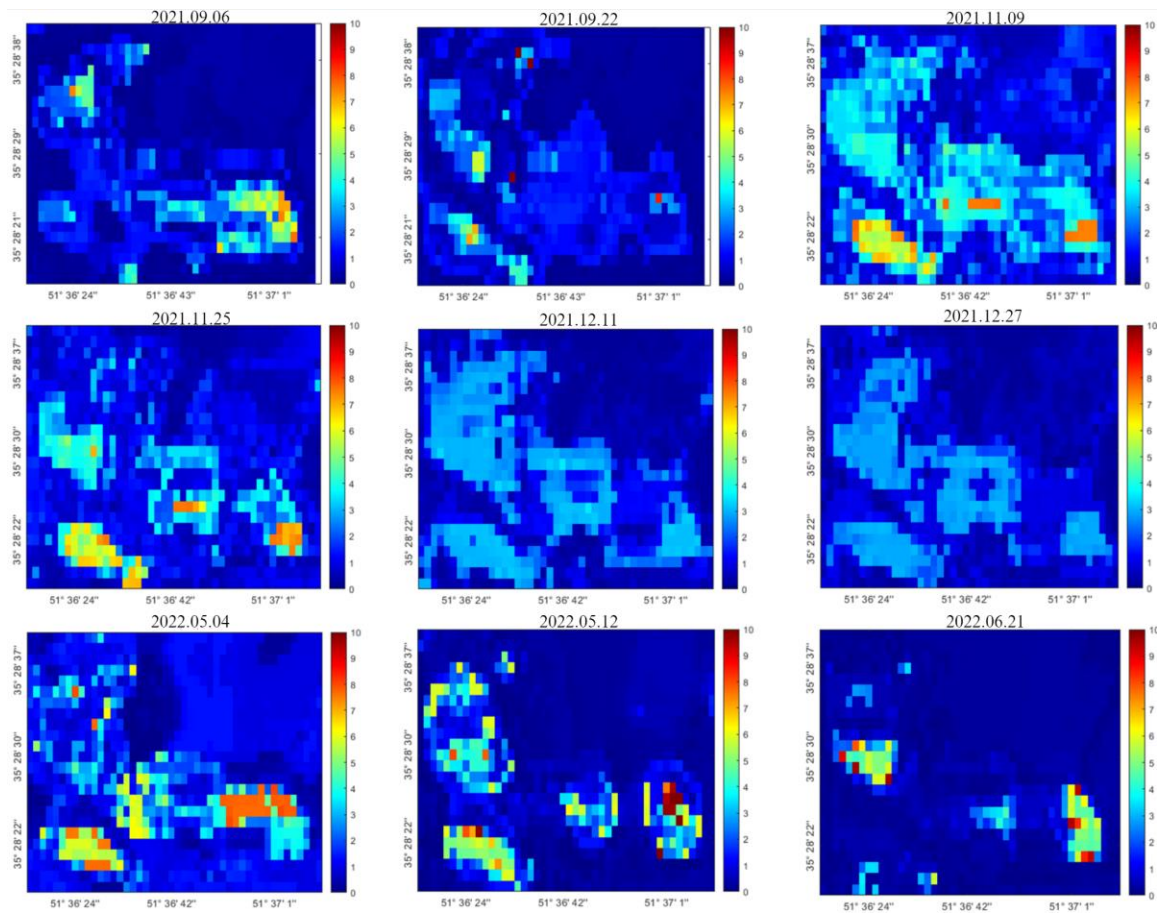


Figure S5. Uncertainty of predicted soil moisture maps (%) using Landsat-8/9 data for data collection days.