

## Supplementary material

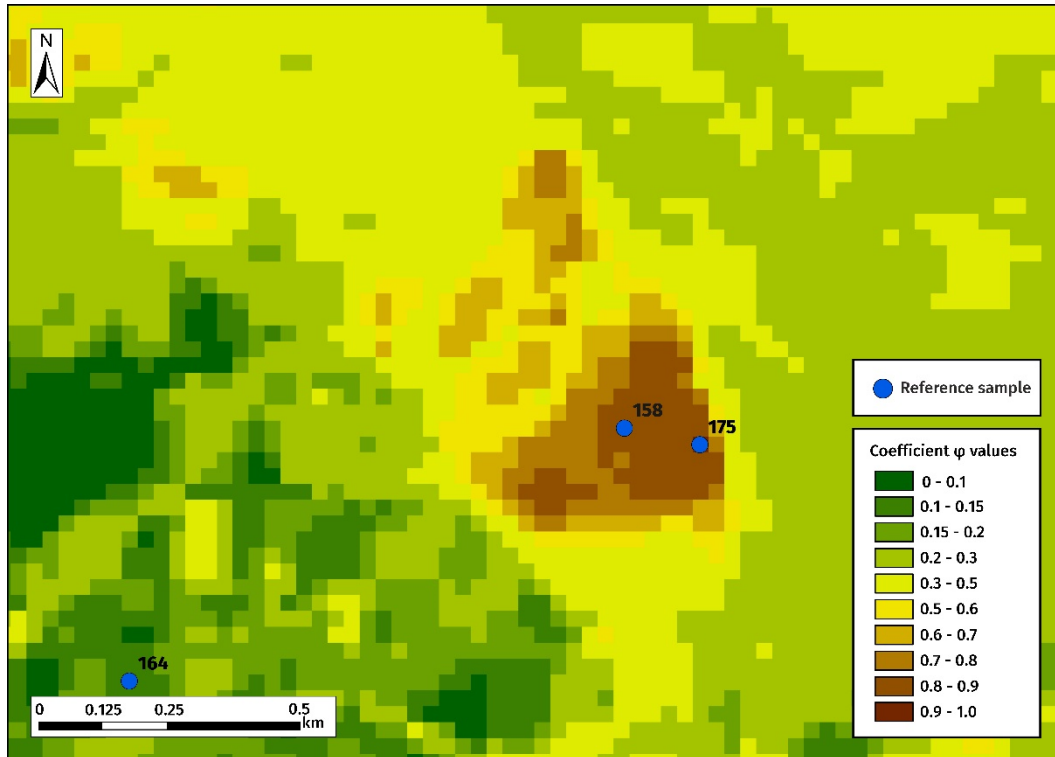


Figure S1. Coefficient  $\phi$  obtained based on the BSI (sample 158 with  $\phi=0.84$ ; sample 175 with  $\phi=0.90$ )

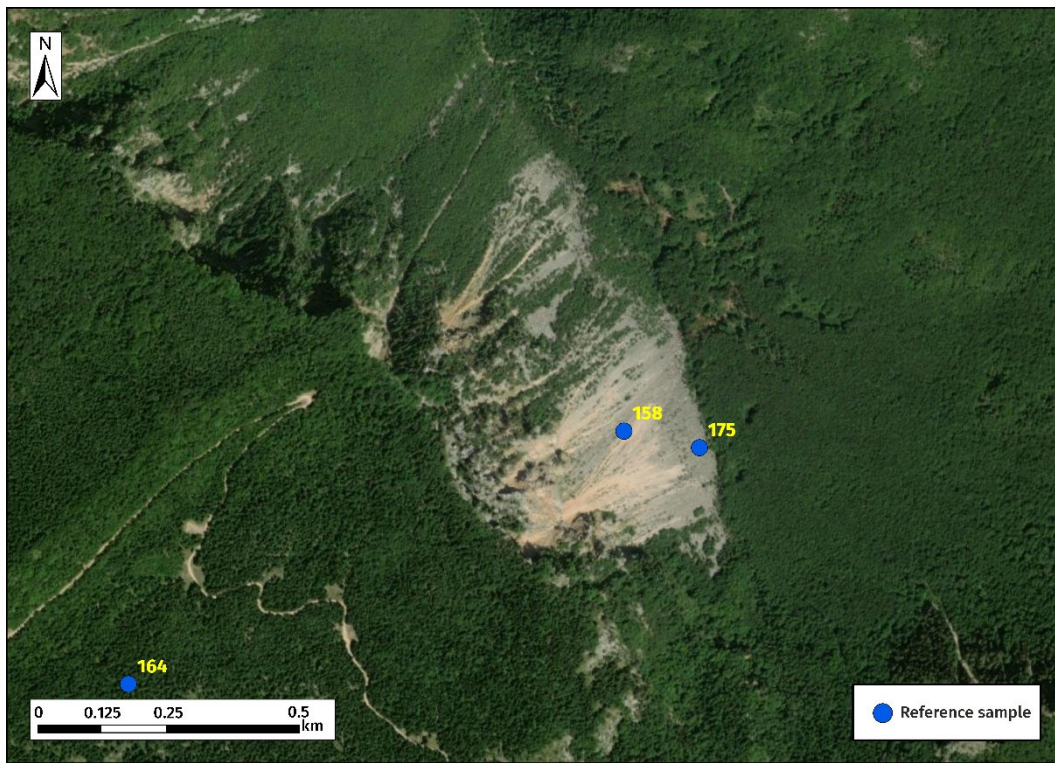
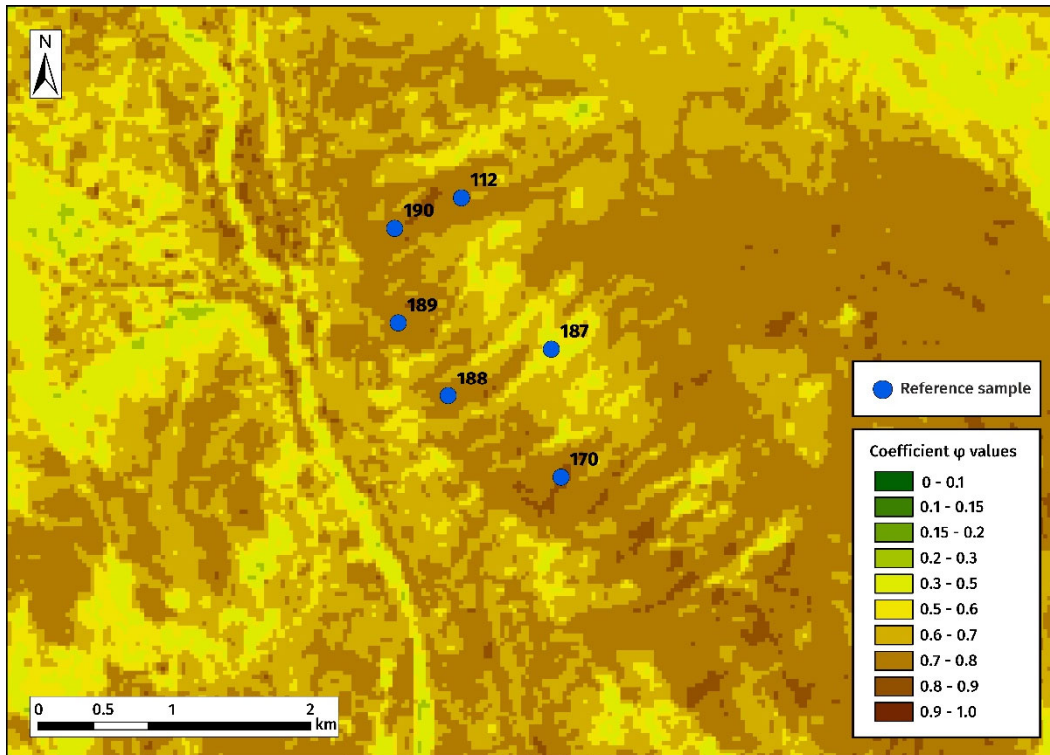
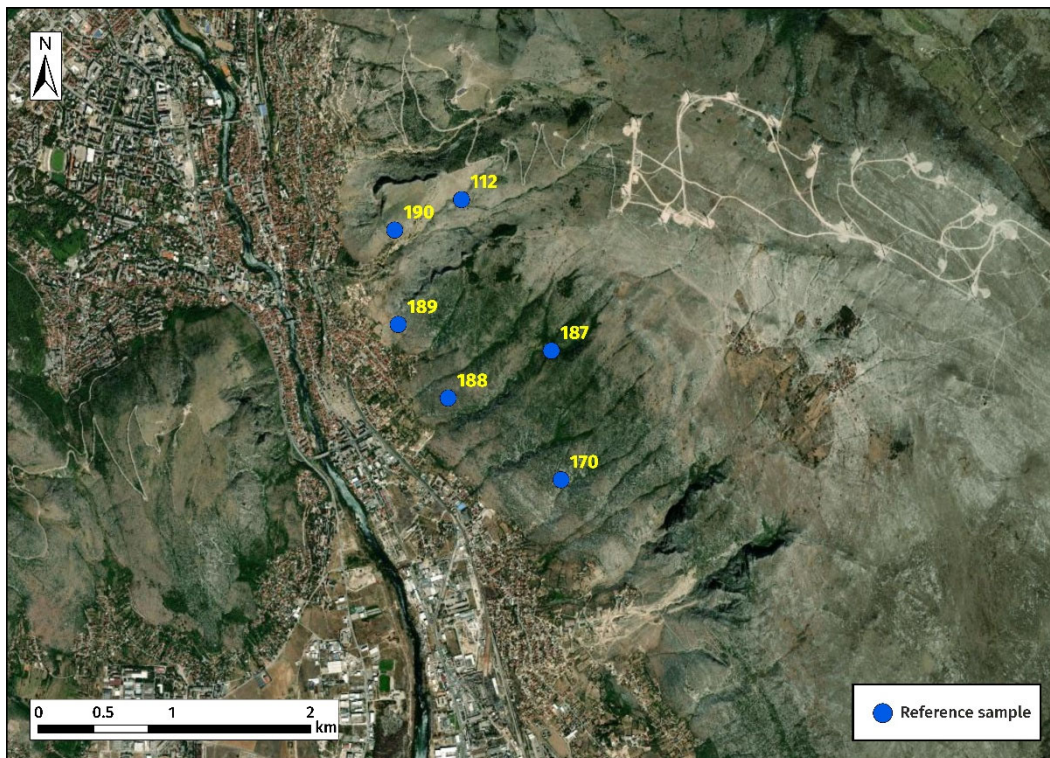


Figure S2. Satellite image with samples 158 and 175



**Figure S3.** Coefficient  $\phi$  obtained based on the BSI (sample 112 with  $\phi=0.73$ ; sample 170 with  $\phi=0.85$ ; sample 187 with  $\phi=0.42$ ; sample 188 with  $\phi=0.74$  sample 189 with  $\phi=0.77$ ; sample 190 with  $\phi=0.82$ ).

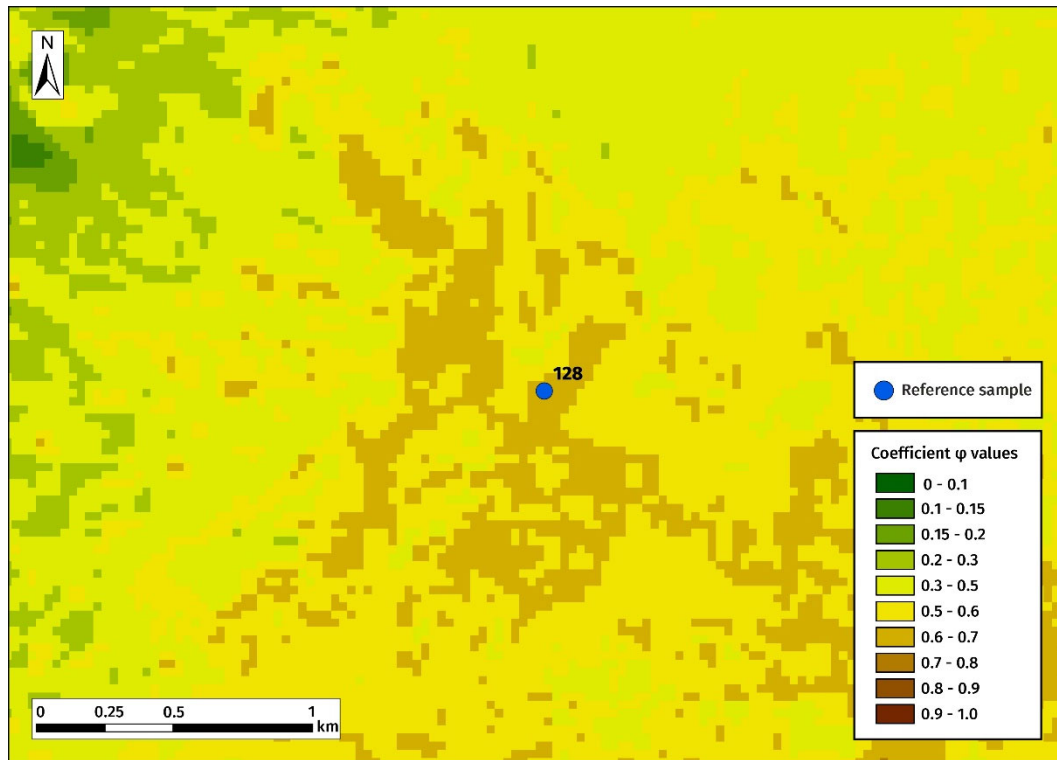


**Figure S4.** Satellite image with samples 112, 170, 187, 188, 189, 190.

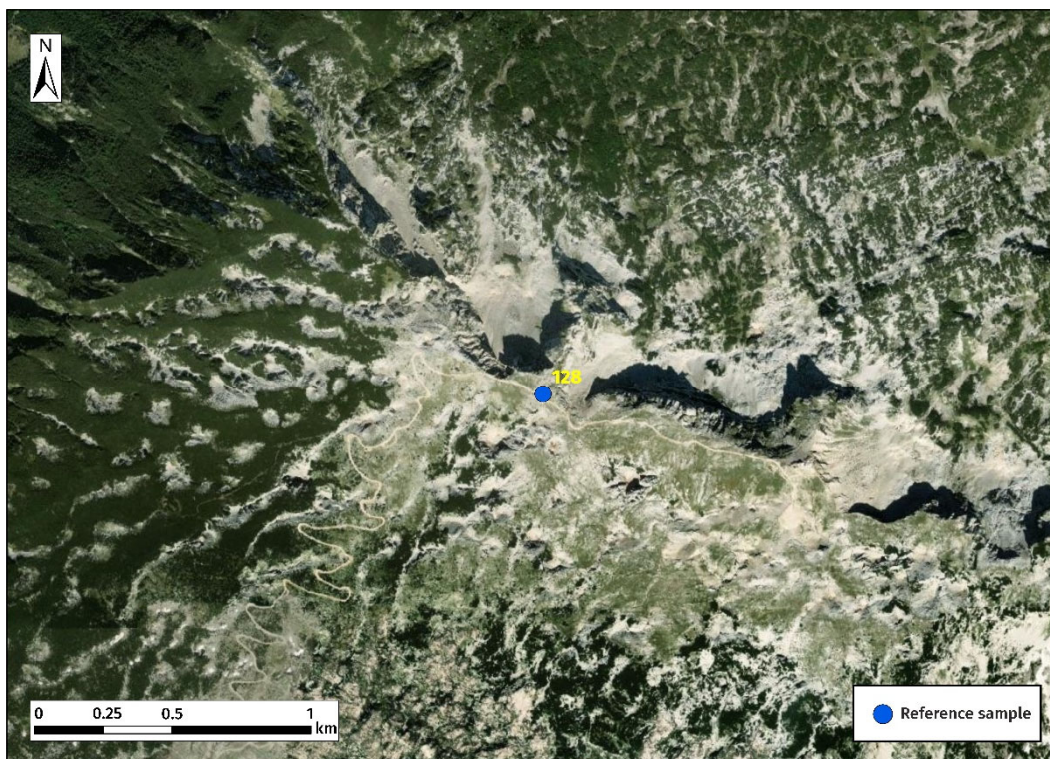




**Figure S5.** Samples 112, 170, 187, 188, 189, 190 after field investigations.



**Figure S6.** Coefficient  $\varphi$  obtained based on the BSI (sample 128 with  $\varphi=0.67$ ).



**Figure S7.** Satellite image with sample 128.

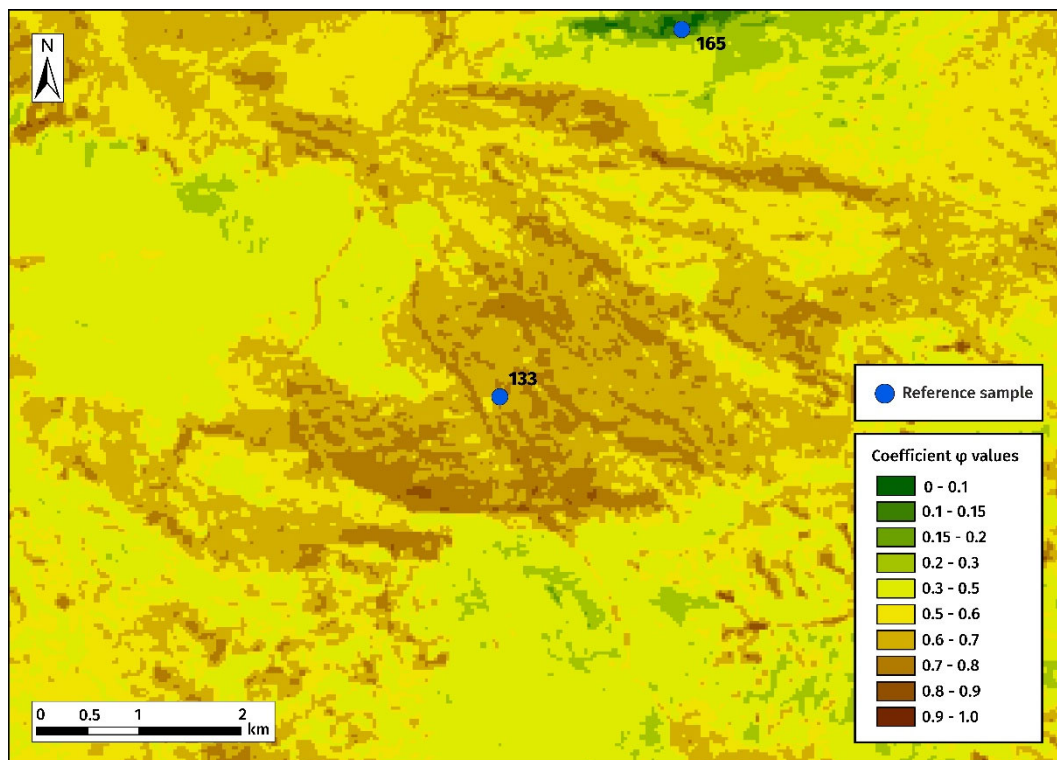


**Figure S8.** Sample 128 after field investigations.



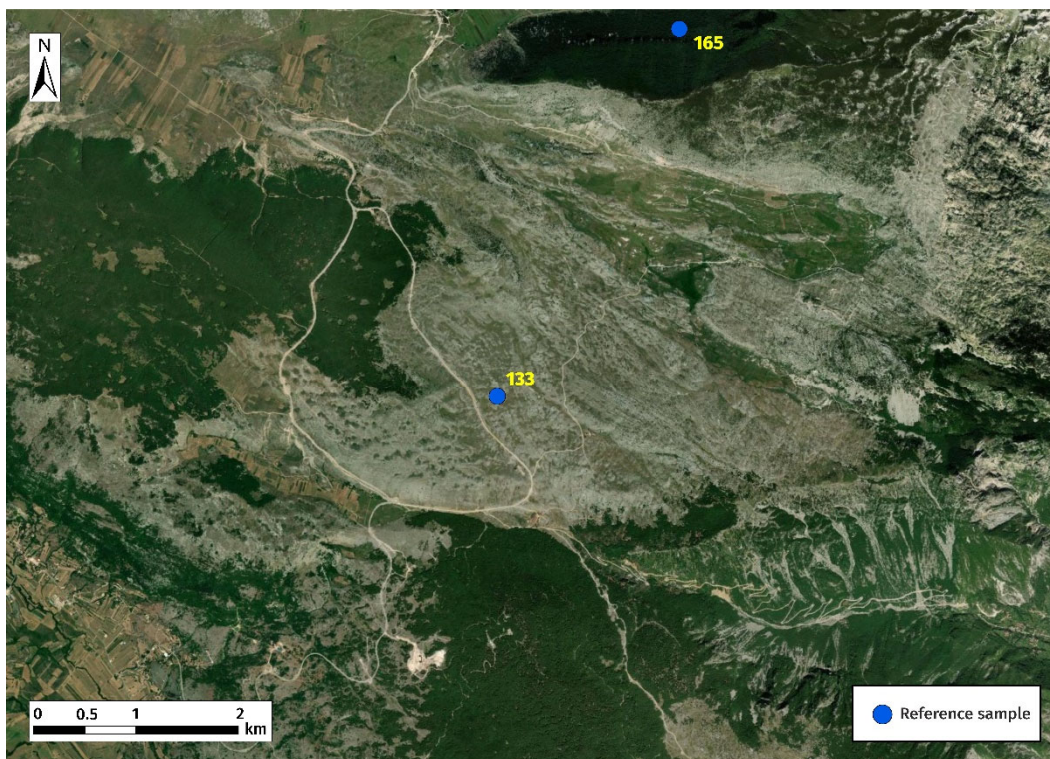


**Figure S9.** Sample 128 after field investigations.



**Figure S10.** Coefficient  $\phi$  obtained based on the BSI (sample 133 with  $\phi=0.71$ ).





**Figure S11.** Satellite image with sample 133.



**Figure S12.** Sample 133 after field investigations.



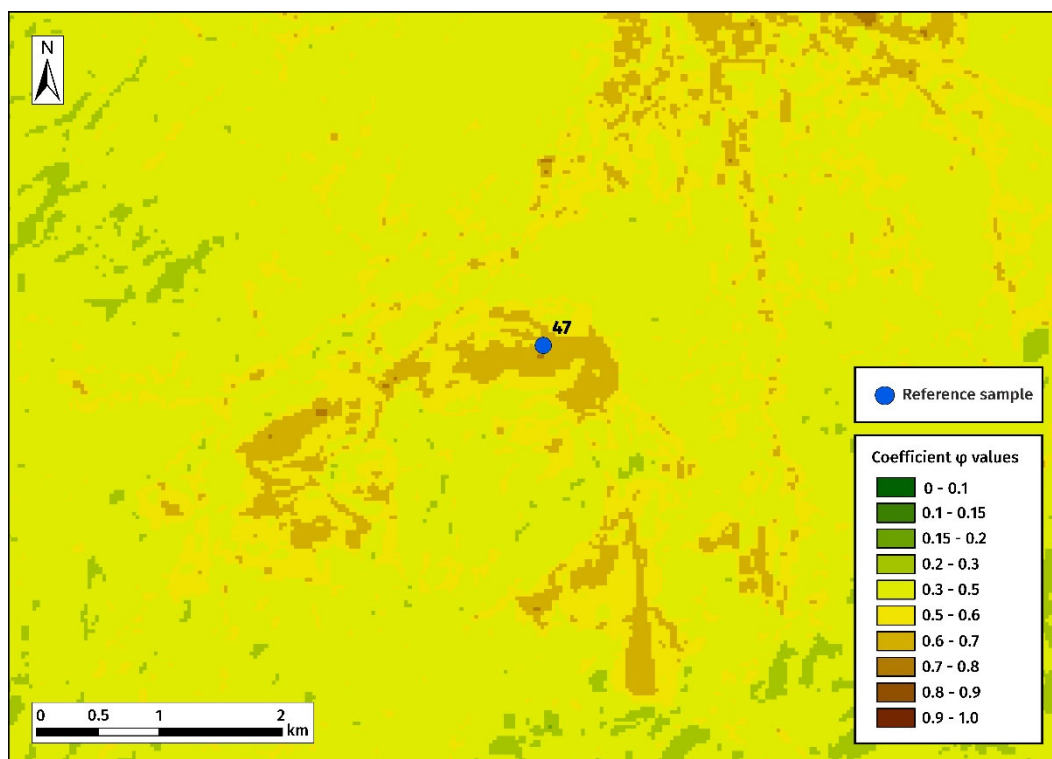


Figure S13. Coefficient  $\phi$  obtained based on the BSI (sample 47 with  $\phi=0.57$ ).

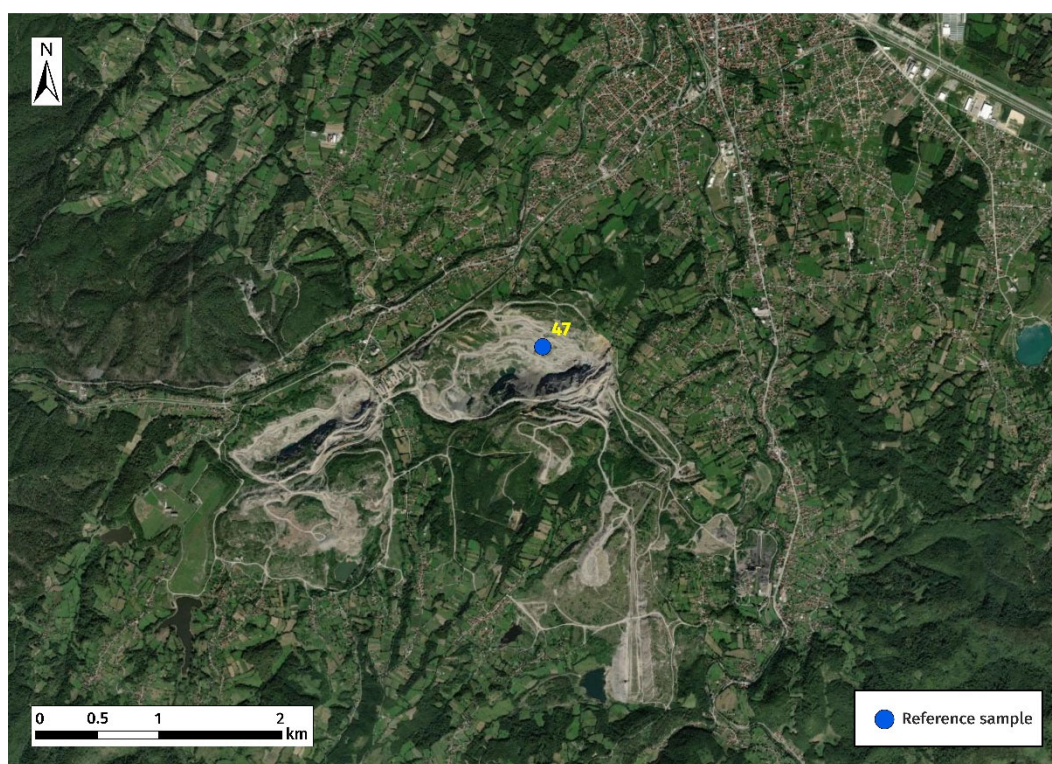
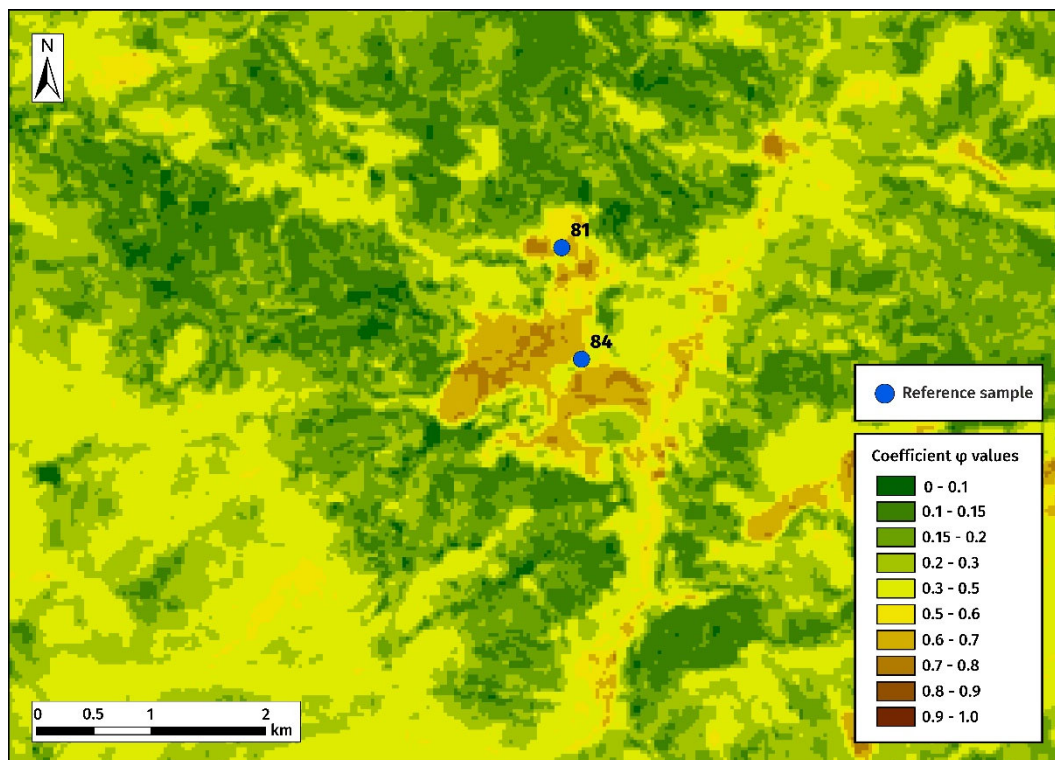


Figure S14. Satellite image with sample 47.

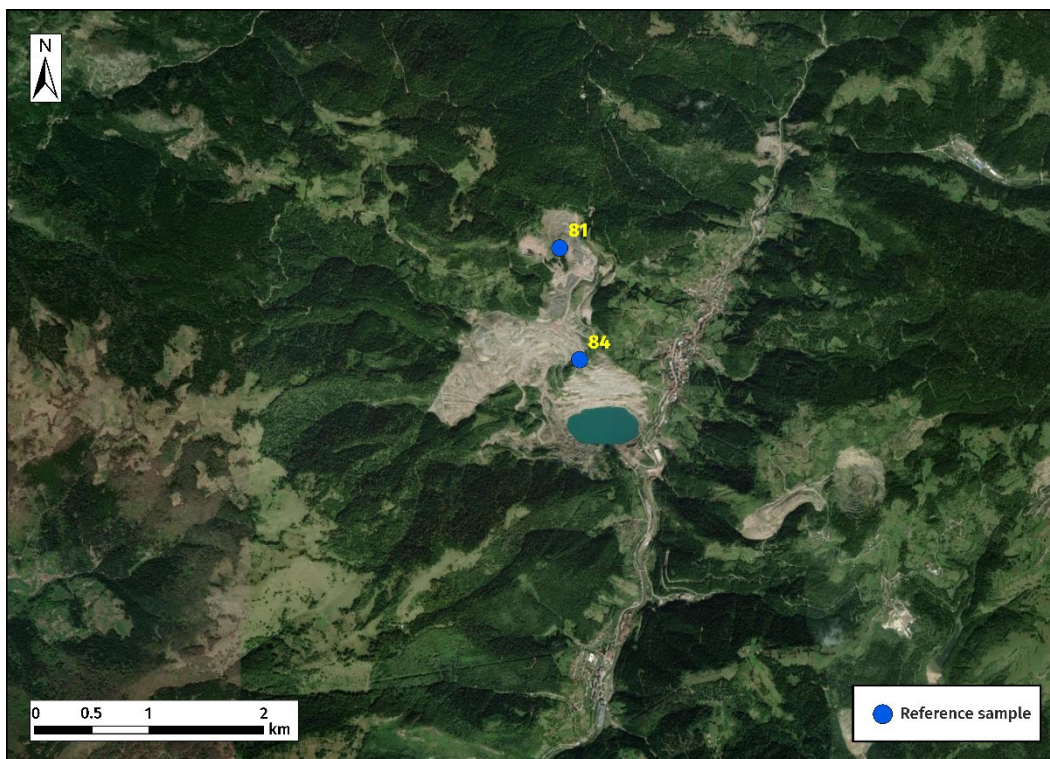


**Figure S15.** Sample 47 after field investigations.



**Figure S16.** Coefficient  $\phi$  obtained based on the BSI (sample 84 with  $\phi=0.50$ ).





**Figure S17.** Satellite image with sample 84.



**Figure S18.** Sample 84 after field investigations.



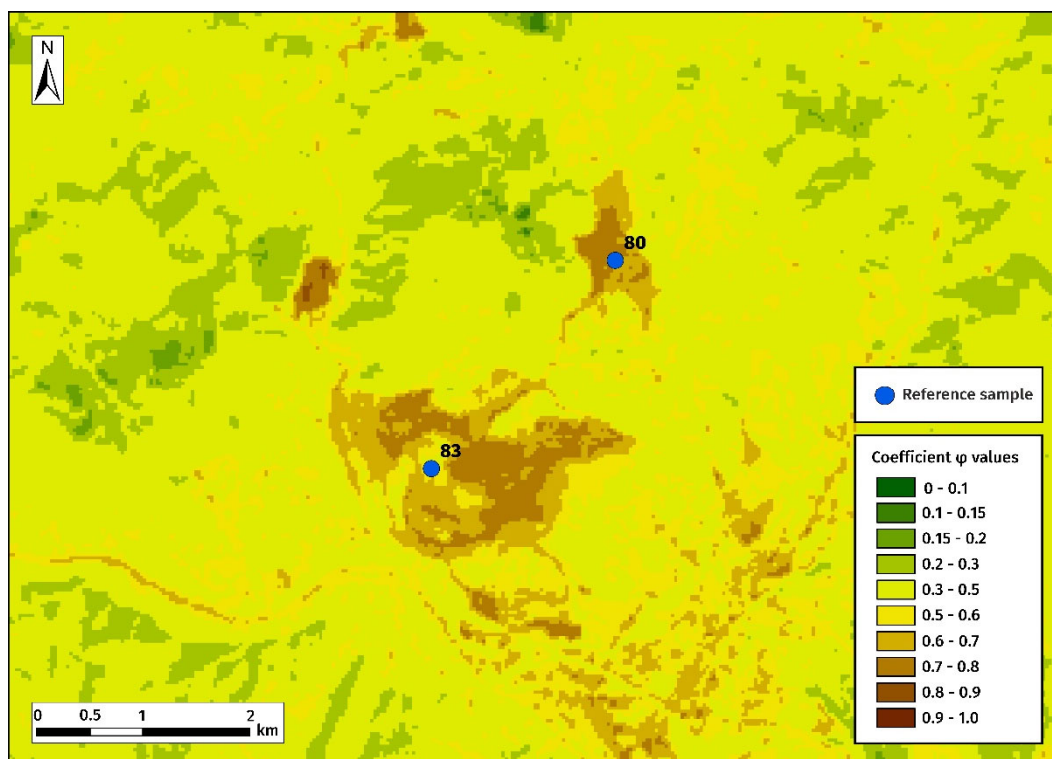


Figure S19. Coefficient  $\phi$  obtained based on the BSI (sample 80 with  $\phi=0.72$ ).

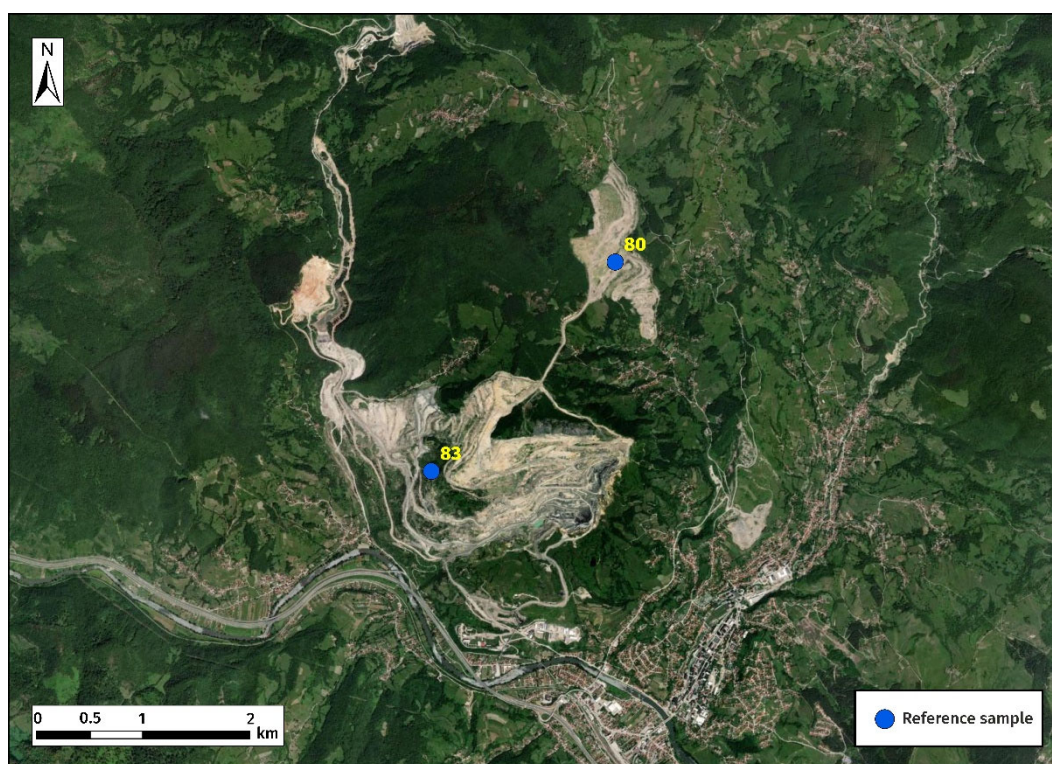


Figure S20. Satellite image with sample 80.





**Figure S21.** Sample 80 after field investigations.