

Remote sensing

Supplementary material for

Comparison of the Morrison and WDM6 Microphysics Schemes in the WRF Model for a Convective Precipitation Event in Guangdong, China, Through the Analysis of Polarimetric Radar Data

Xiaolong Chen ^{1, 2} and Xiaoli Liu ^{1,2,*}

1 China Meteorological Administration Aerosol-Cloud and Precipitation Key Laboratory, Nanjing University of Information Science and Technology, Nanjing 210044, China; 202212030021@nuist.edu.cn

2 College of Atmospheric Physics, Nanjing University of Information Science and Technology,
Nanjing 210044, China

Correspondence: liuxiaoli2004y@nuist.edu.cn

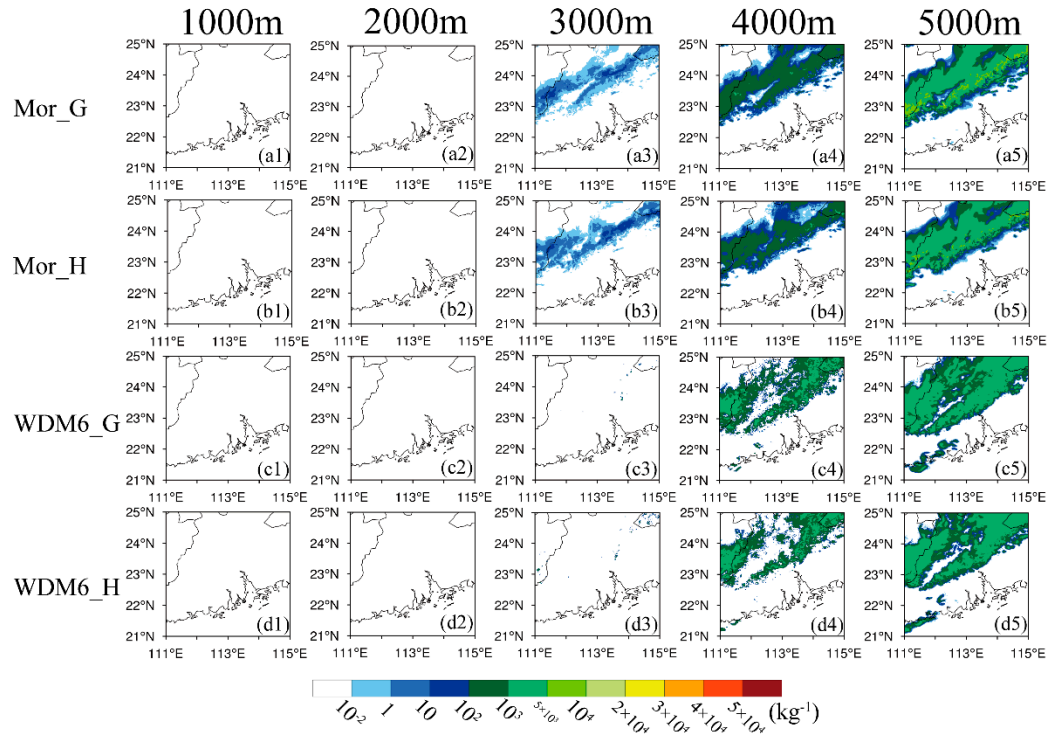


Figure S1. Horizontal cross-sections of snow number concentration at different height levels, from left to right: 1000 m, 2000 m, 3000 m, 4000 m, and 5000 m. (a1–a5) represent the Mor_G scheme, (b1–b5) the Mor_H scheme, (c1–c5) the WDM6_G scheme and (d1–d5) the WDM6_H scheme.

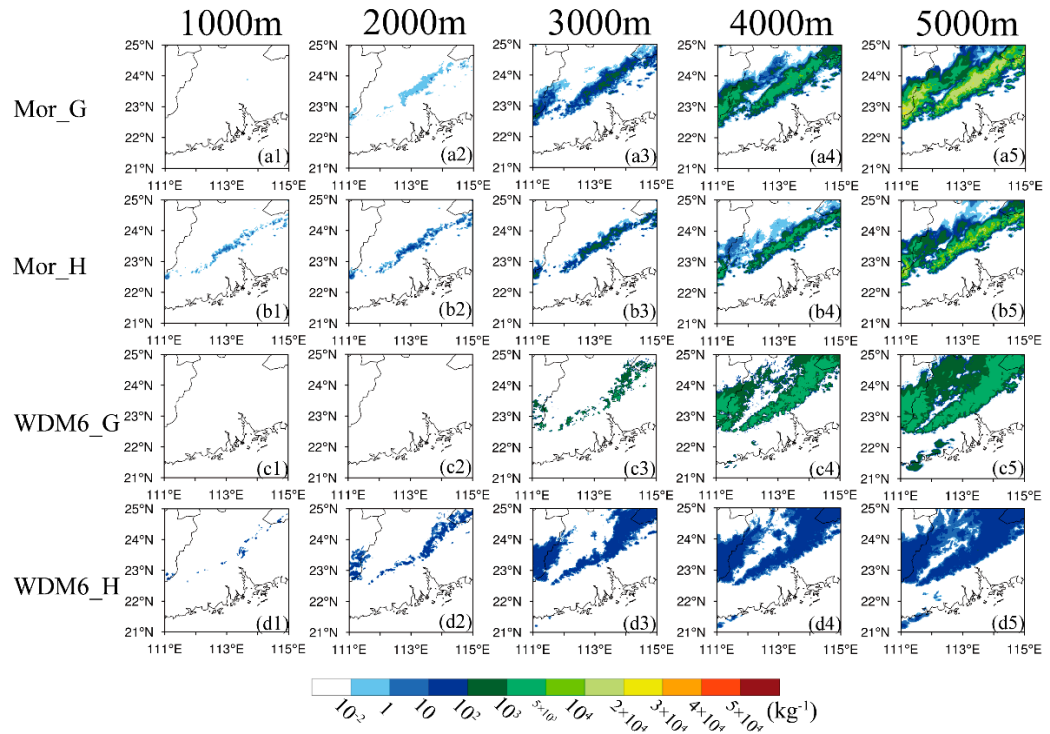


Figure S2. Same as Figure S1, but for the horizontal cross-sections of graupel number concentration at different height levels.

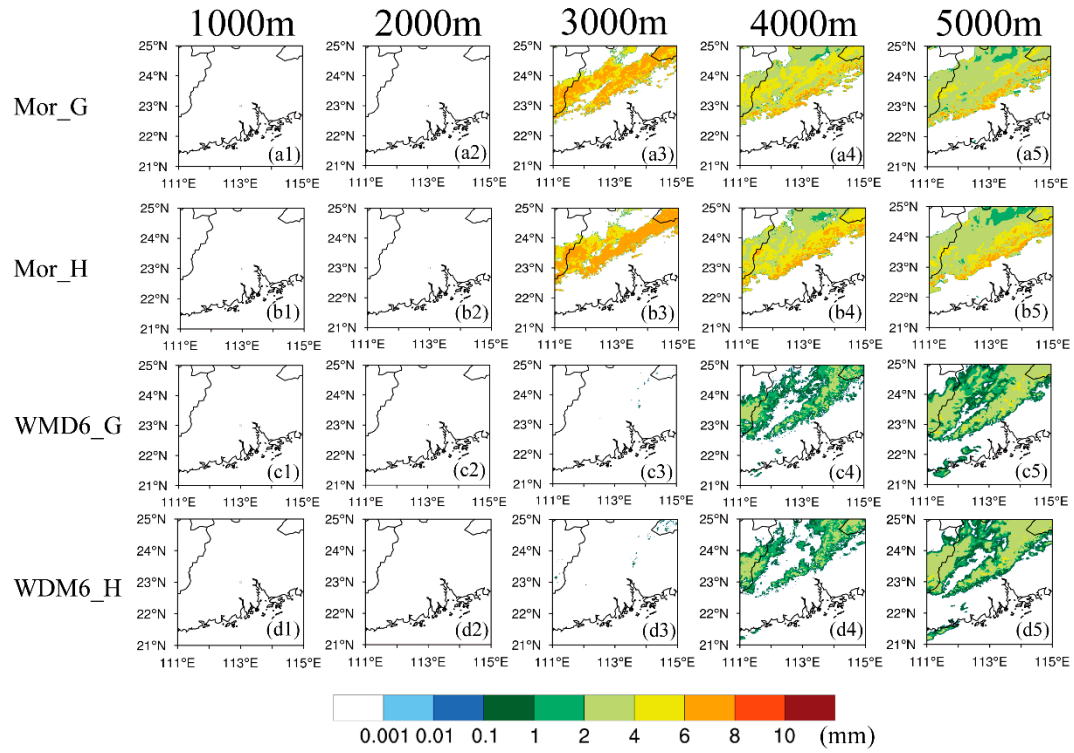


Figure S3. Horizontal cross-sections of snow mass-weighted diameters at different height levels, from left to right: 1000 m, 2000 m, 3000 m, 4000 m, and 5000 m. (a1–a5) represent the Mor_G scheme, (b1–b5) the Mor_H scheme, (c1–c5) the WMD6_G scheme and (d1–d5) the WMD6_H scheme.

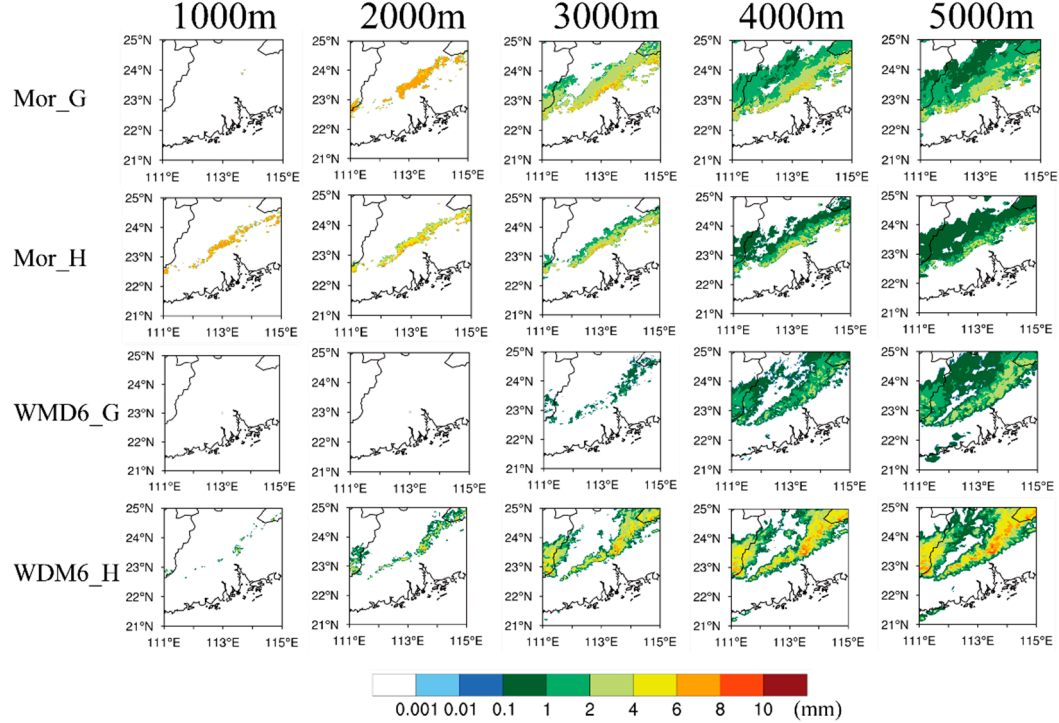


Figure S4. Same as Figure S3, but for the horizontal cross-sections of graupel mass-weighted diameters at different height levels.

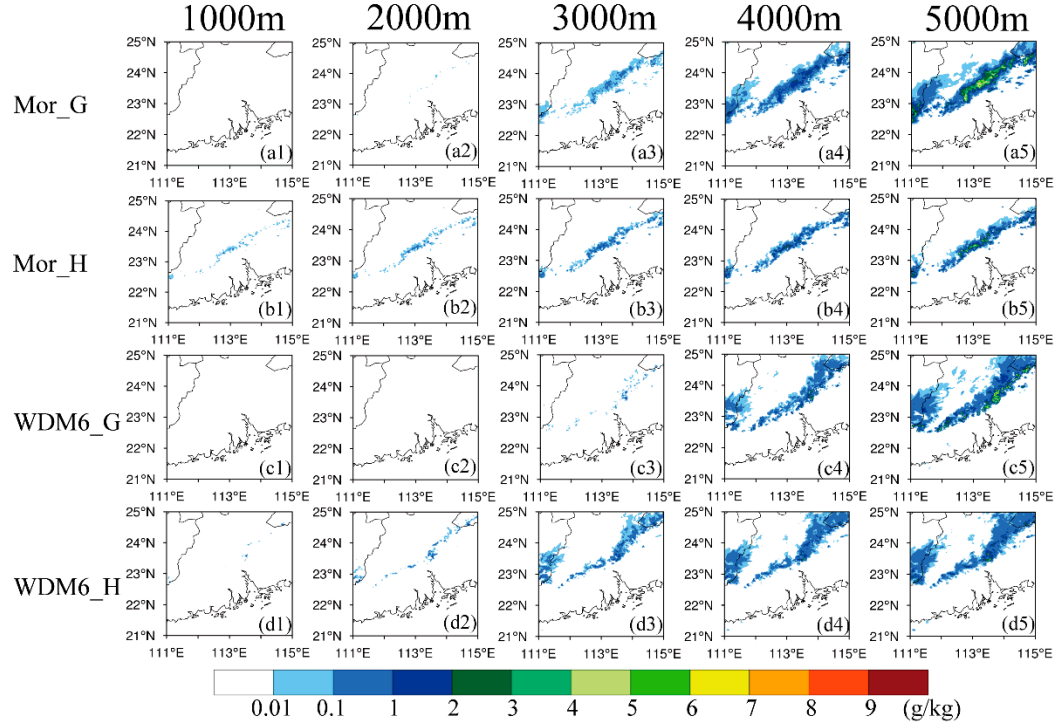


Figure S5. Horizontal cross-sections of graupel mass mixing ratio at different height levels, from left to right: 1000 m, 2000 m, 3000 m, 4000 m, and 5000 m. (a1–a5) represent the Mor_G scheme, (b1–b5) the Mor_H scheme, (c1–c5) the WDM6_G scheme and (d1–d5) the WDM6_H scheme.