

Supplementary Materials

Table S1. Changes in the islet area from 1988 to 2020.

Year	Total water surface (km ²)			Islet area (km ²)			Islets area/ total water surface (%)		
	VMD	Mekong	Bassac	VMD	Mekong	Bassac	VMD	Mekong	Bassac
1988	1,323.0	916.2	406.8	440.6	339.0	101.6	33.3	37.0	25.0
1995	1,319.9	910.9	409.0	437.4	336.6	100.8	33.1	37.0	24.6
2002	1,312.1	906.3	405.8	446.2	343.3	102.9	34.0	37.9	25.4
2008	1,307.0	902.9	404.1	447.9	344.4	103.5	34.3	38.1	25.6
2015	1,306.6	903.7	402.9	449.8	344.4	105.4	34.4	38.1	26.2
2020	1,313.2	906.2	407.1	453.9	346.5	107.5	34.6	38.2	26.4

Table S2. Changes in sinuosity index of the Mekong and Bassac Rivers during 1988–2020.

Branch	1988	1995	2002	2008	2015	2020
Mekong	1.15	1.16	1.16	1.17	1.16	1.17
Bassac	1.22	1.21	1.21	1.21	1.21	1.23

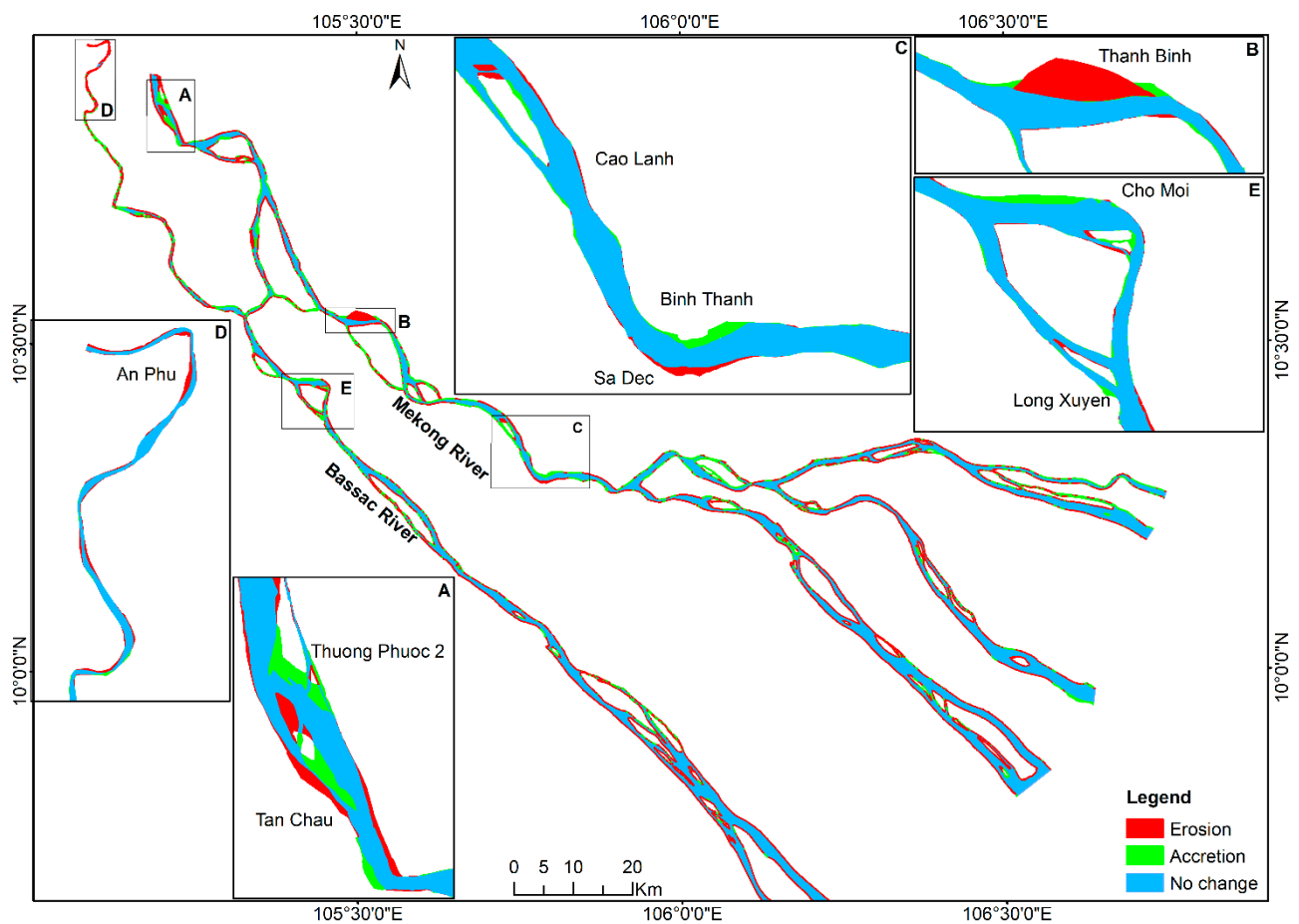


Figure S1. Erosion and accretion map of riverbank and islets in 1988–1995.

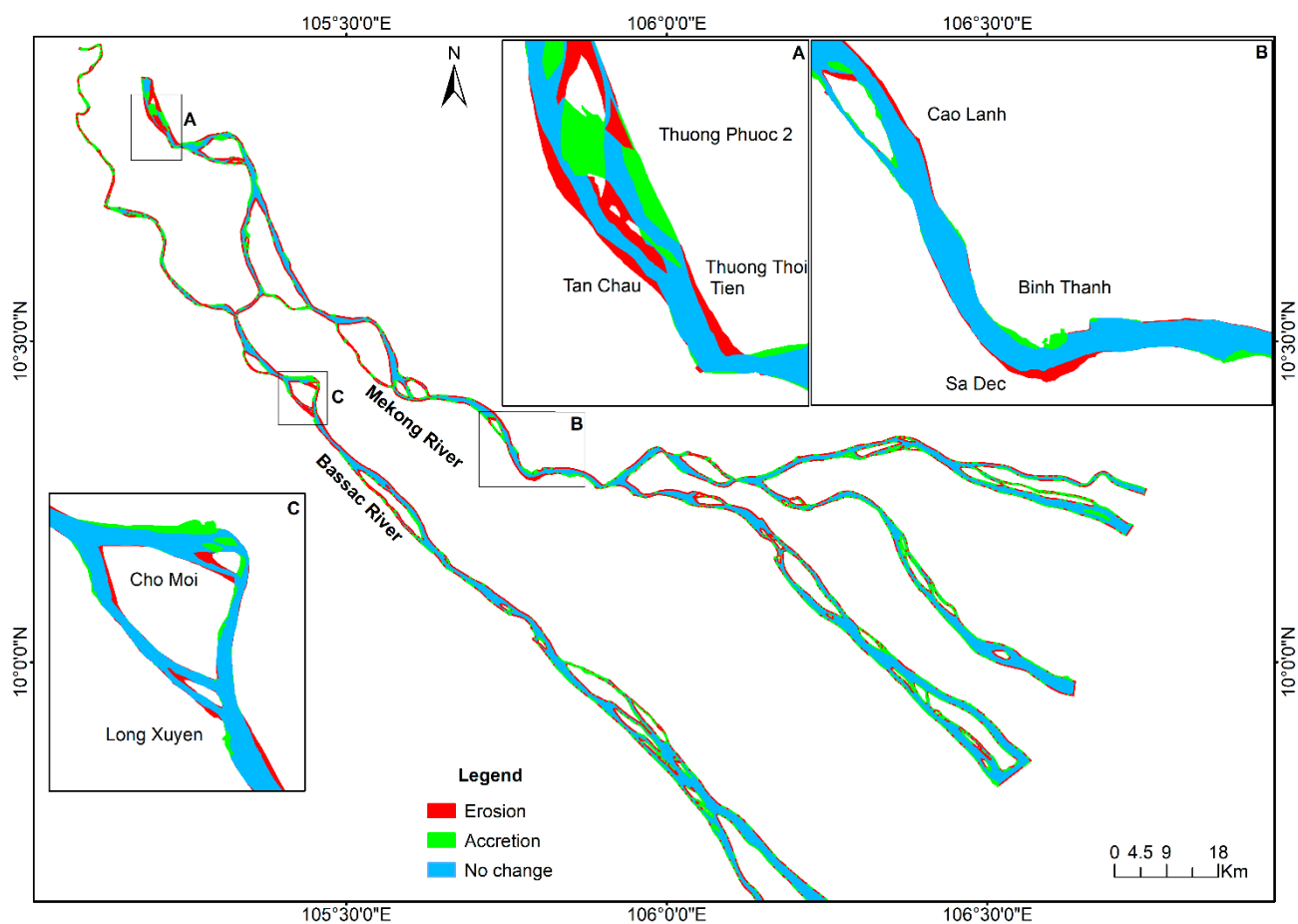


Figure S2. Erosion and accretion map of riverbank and islets in 1995–2002.

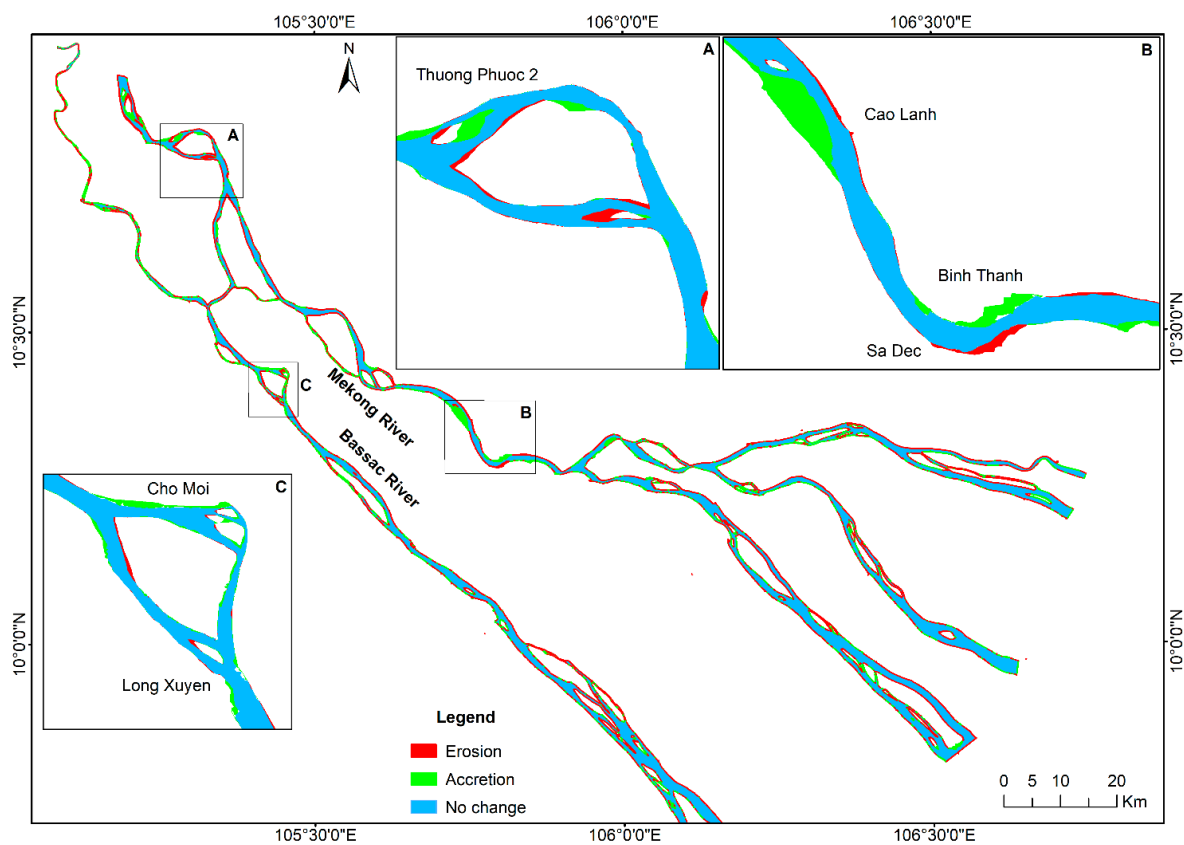


Figure S3. Erosion and accretion map of riverbank and islets in 2002–2008.

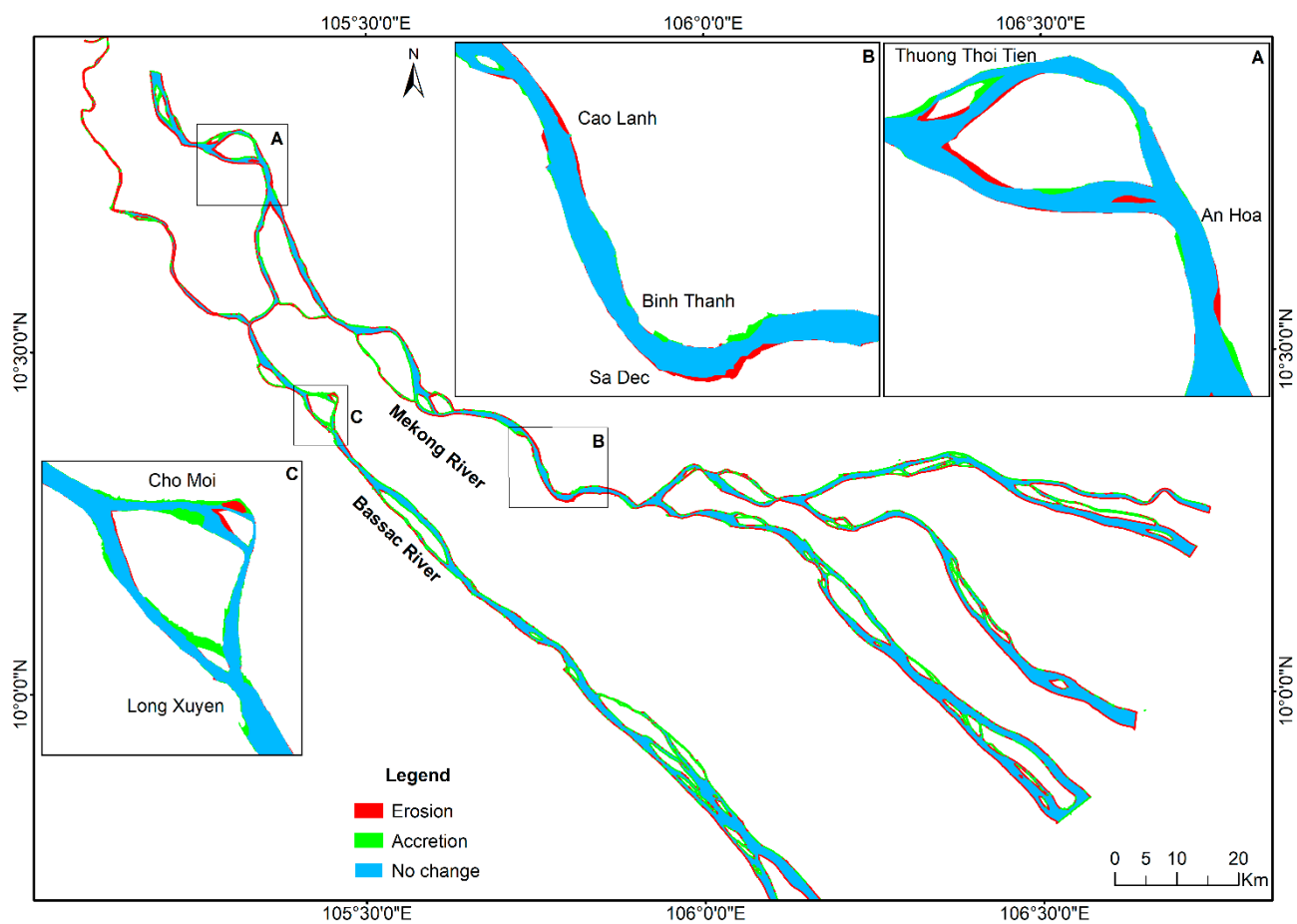


Figure S4. Erosion and accretion map of riverbank and islets in 2008–2015.

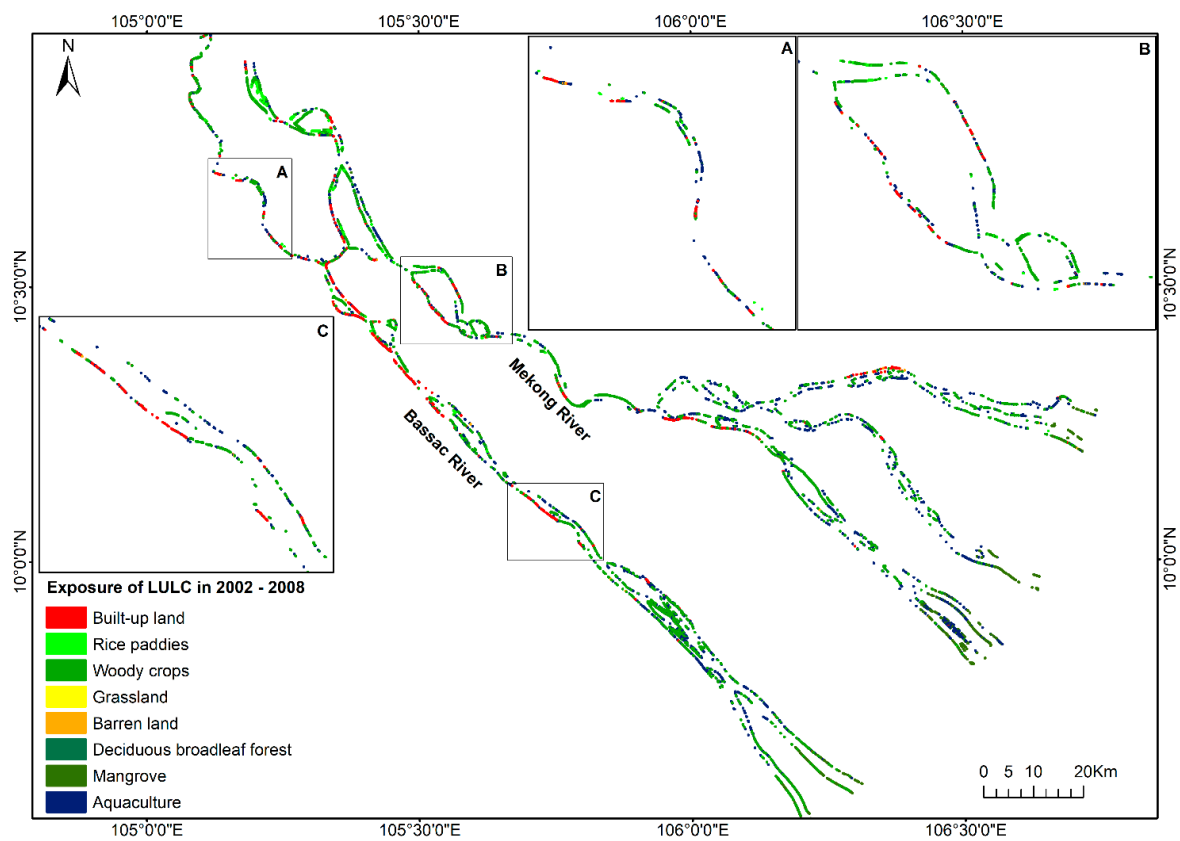


Figure S5. Exposure of LULC to riverbank and islet erosion in the VMD in 2002–2008.

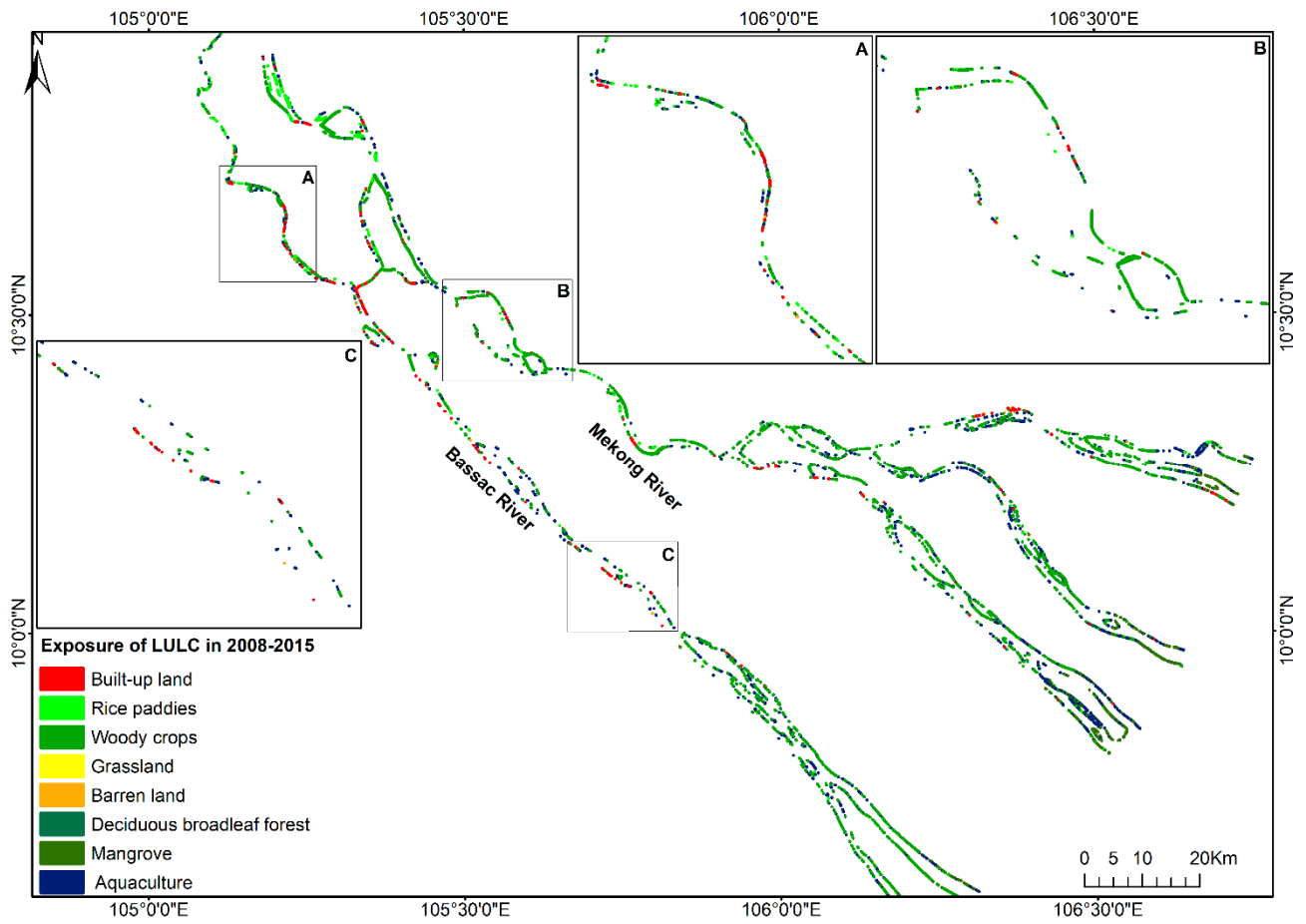


Figure S6. Exposure of LULC to riverbank and islet erosion in the VMD in 2008-2015.

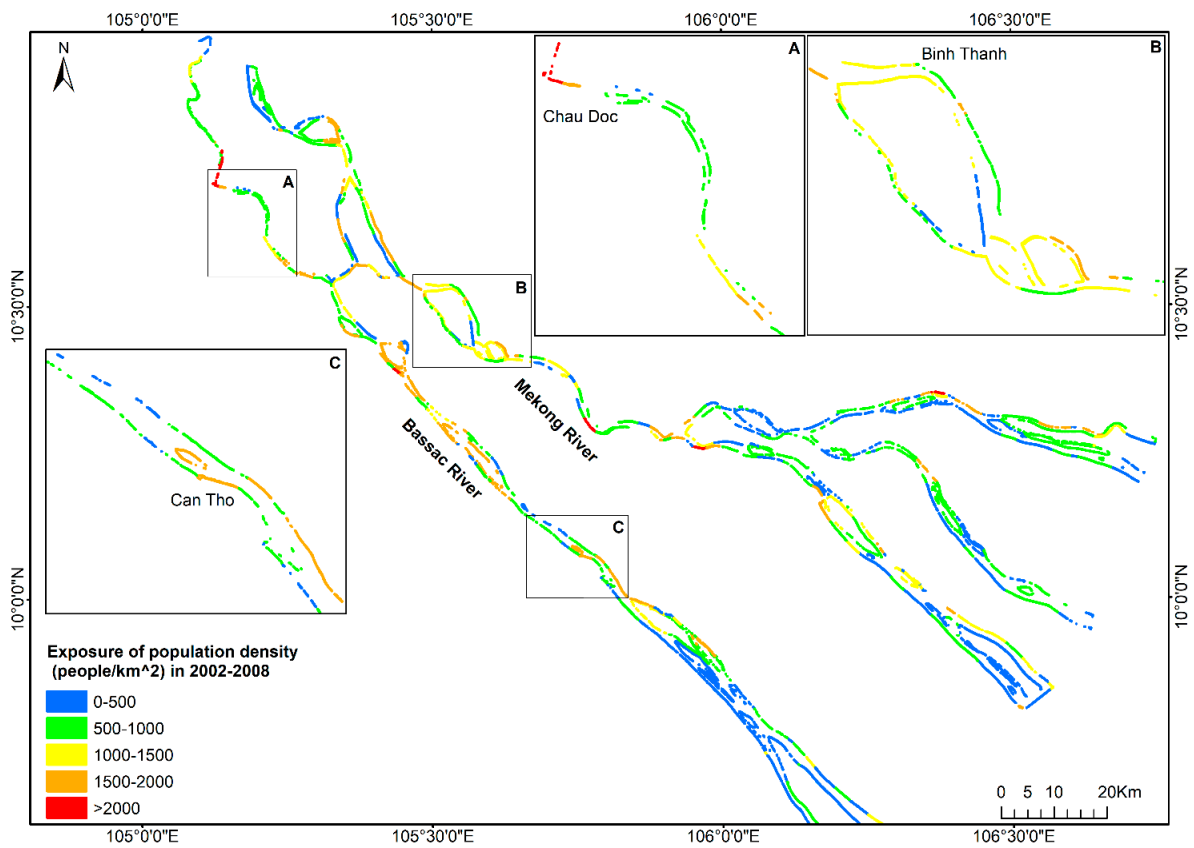


Figure S7. Exposure of population density to riverbank and islet erosion in the VMD in 2002-2008.

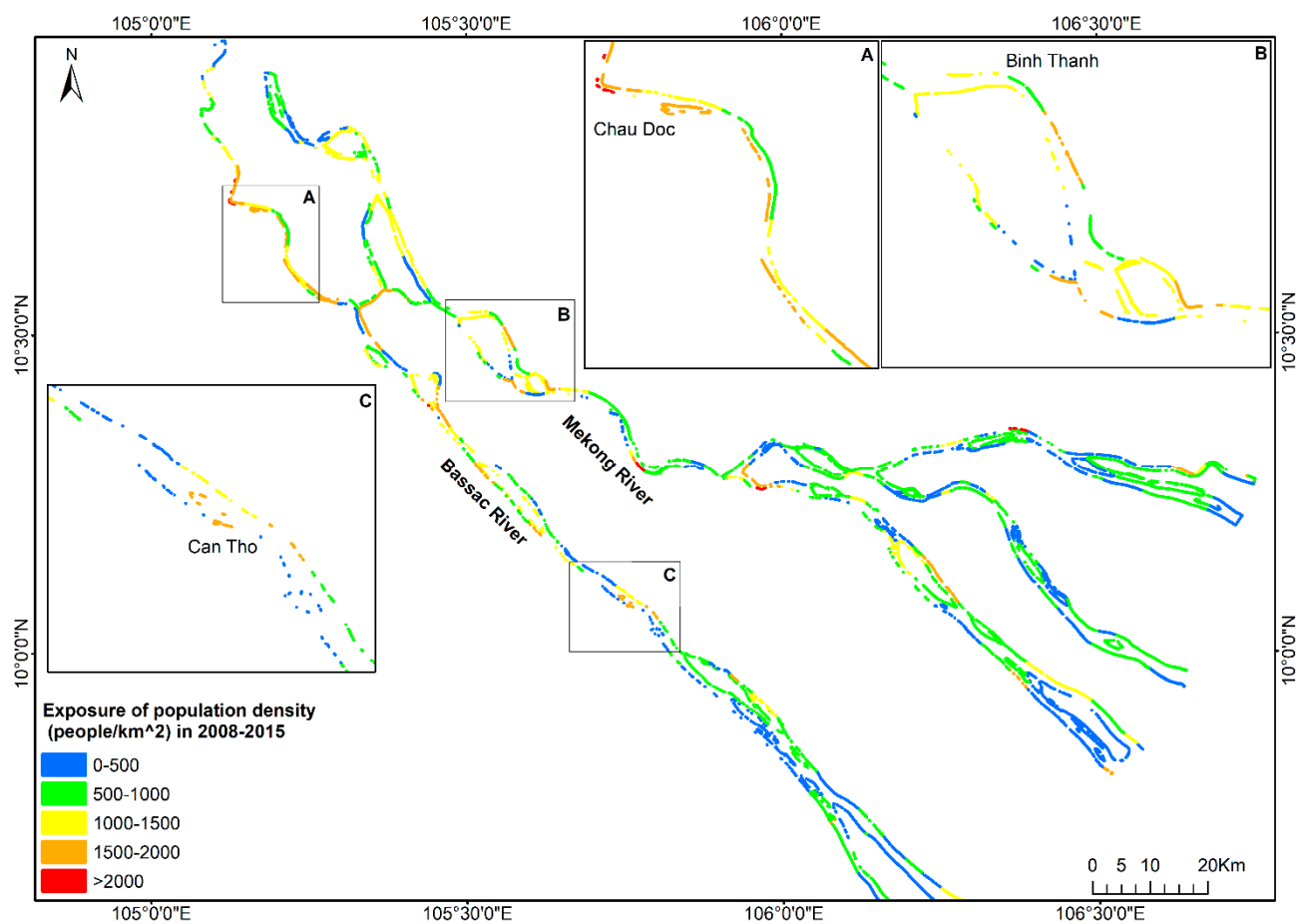


Figure S8. Exposure of population density to riverbank and islet erosion in the VMD in 2008–2015.

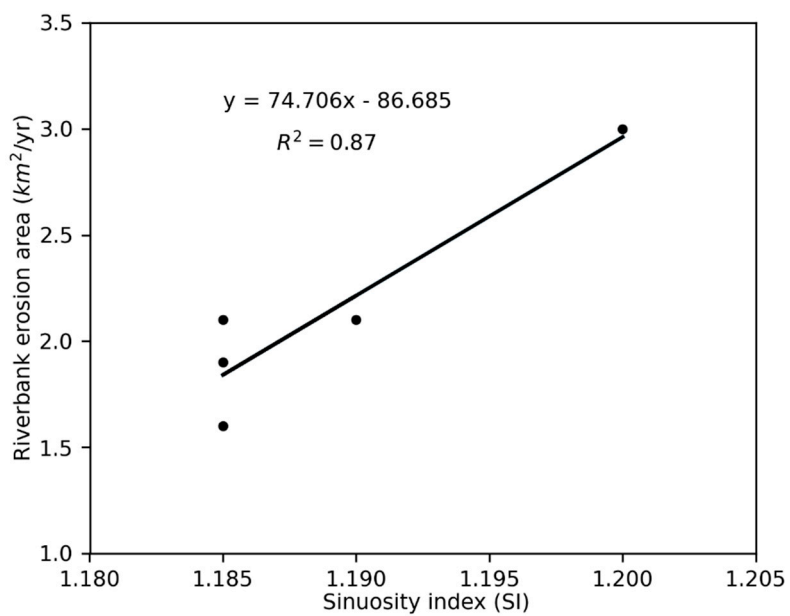


Figure S9. A linear regression between SI and the riverbank erosion area of the VMD.

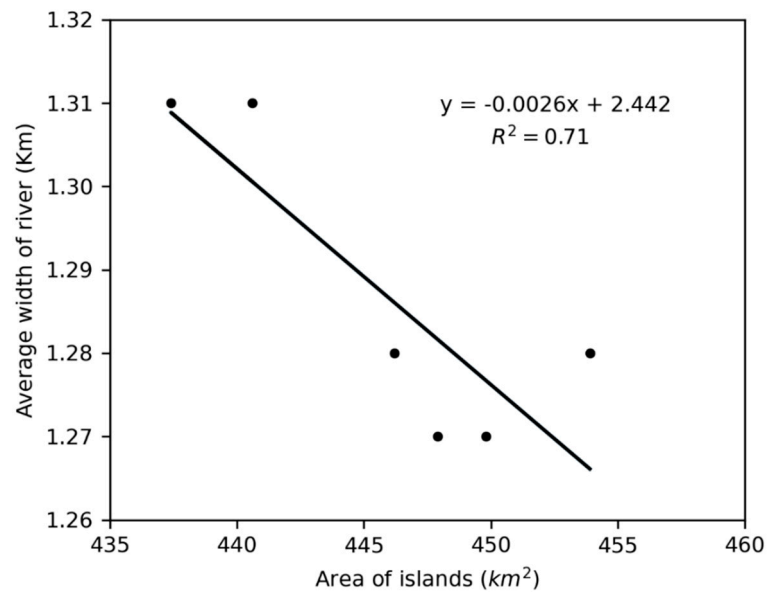


Figure S10. A linear regression between islet area and the average width of the VMD.