

# Supplementary material for

## **Adapting prediction models to bare soil fractional cover for extending topsoil clay content mapping based on AVIRIS-NG hyperspectral data**

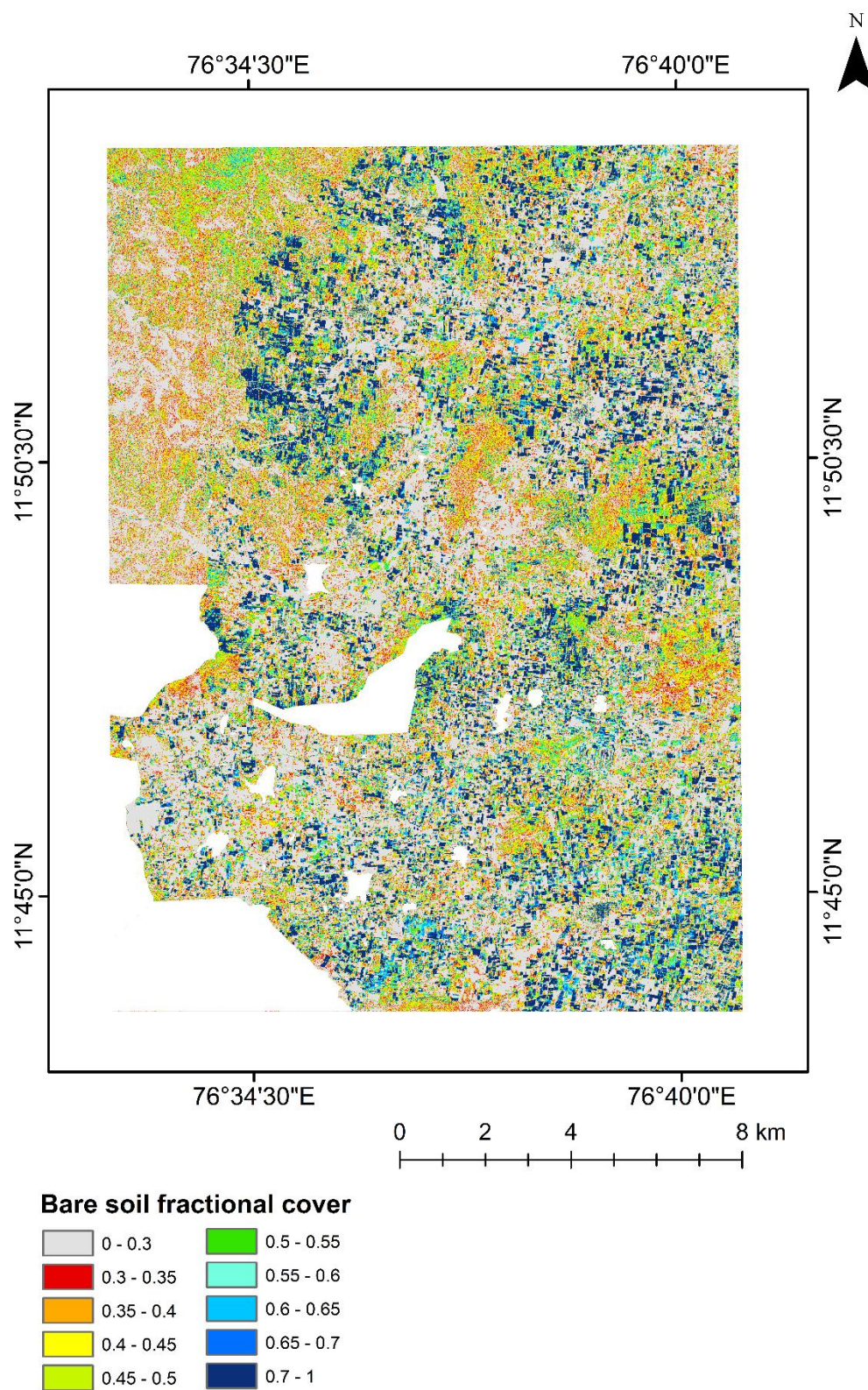
Elizabeth Baby George, Cécile Gomez, D. Nagesh Kumar

This document contains the following supplementary materials:

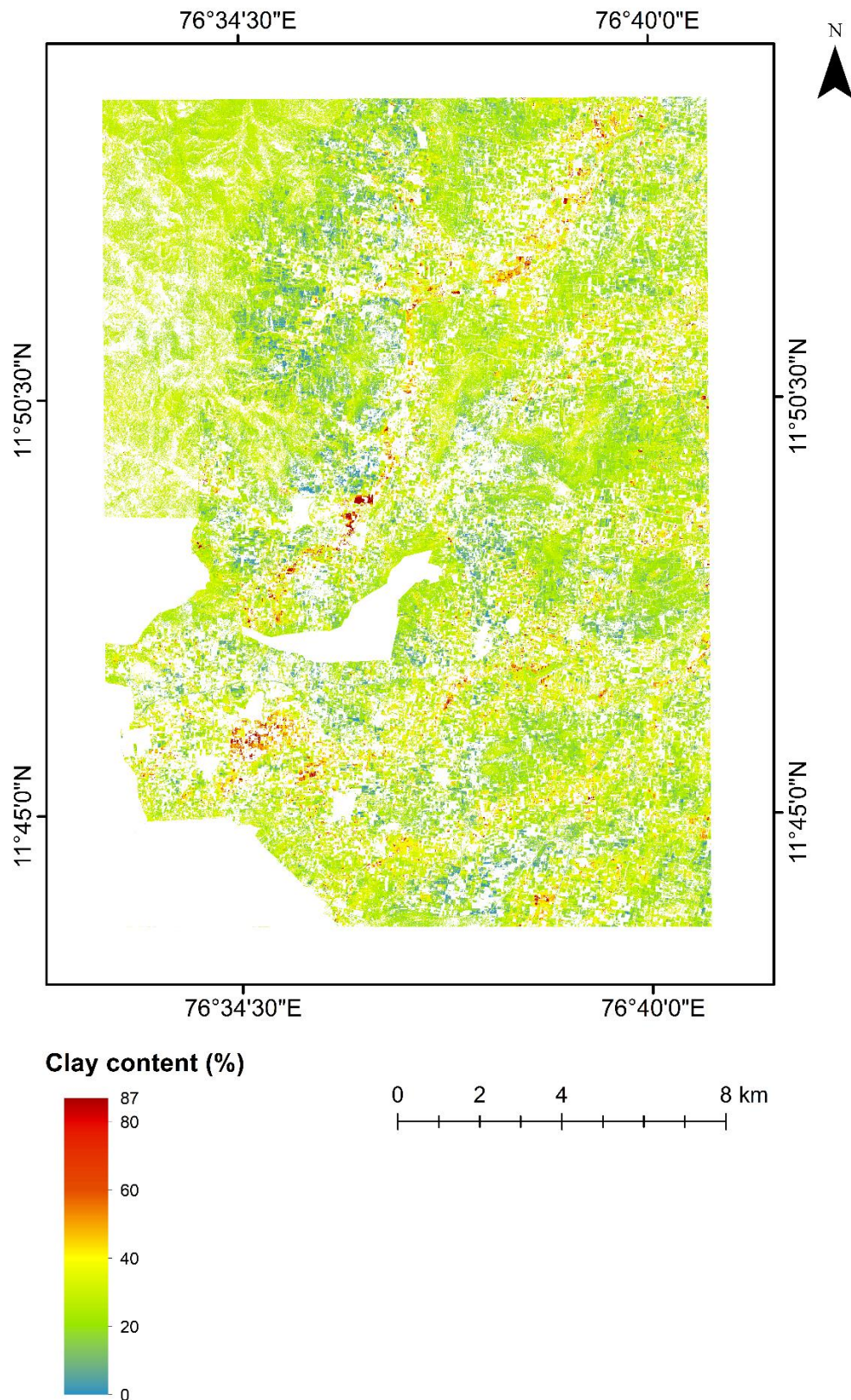
Figure S1: The map of bare soil fractional cover classes using spectral unmixing (*SFClassMap*) for the entire study area..... (Page ii)

Figure S2: The clay content composite map *CompositeClayMap* (mean clay content from 100 iterations) for the entire study area..... (Page iii)

Figure S3: The map of uncertainties associated with the clay content estimation *UncertaintyMap* (standard deviation from 100 iterations) for the entire study area.... (Page iv)

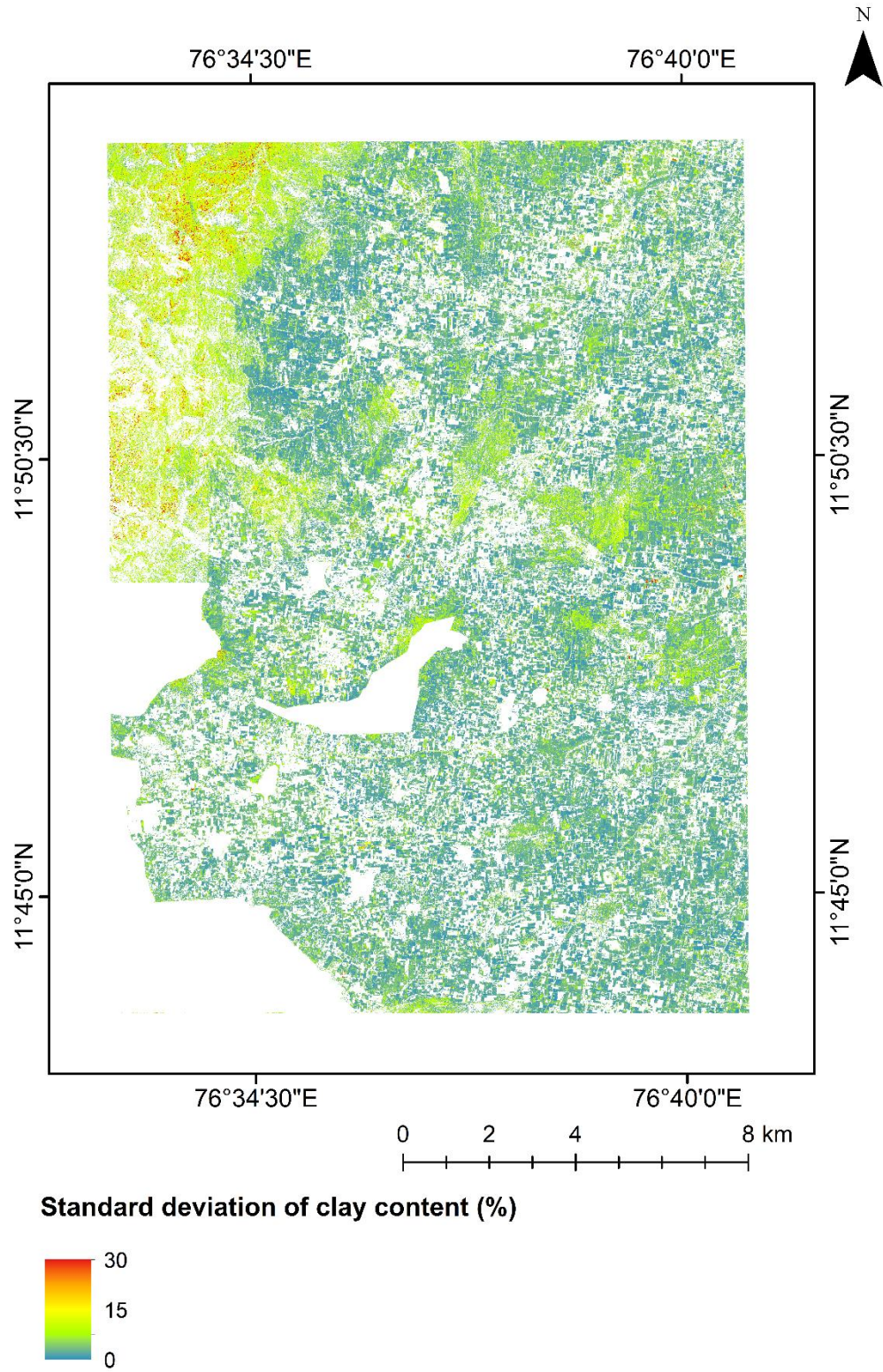


**Figure S1.** The map of bare soil fractional cover classes *SFClassMap* for the study area.



**Figure S2.** The clay content composite map *CompositeClayMap* (mean clay content from 100 iterations) for the study area.





**Figure S3.** The map of uncertainties associated with the clay content estimation *UncertaintyMap* (standard deviation from 100 iterations) for the study area.