

Supplementary Information

Spatio-Temporal Assessment of Tuz Gölü, Turkey as a Potential Radiometric Vicarious Calibration Site. *Remote Sensing*, 2014, 6, 2494–2513

Vincent O. Odongo ^{1,2,*}, Nicholas A. S. Hamm ² and Edward J. Milton ¹

¹ Geography & Environment, University of Southampton, Southampton, Hampshire SO17 1BJ, UK; E-Mail: e.j.milton@soton.ac.uk

² Faculty of Geo-Information Science and Earth Observation (ITC), University of Twente, P.O. Box 217, 7514 AE, Enschede, The Netherlands; E-Mail: nick@hamm.org

* Author to whom correspondence should be addressed; E-Mail: v.o.odongo@utwente.nl; Tel.: +31-5-348-74524, Fax: +31-5-348-74554.

Received: 15 November 2013; in revised form: 5 March 2014 / Accepted: 10 March 2014 /

Published: 20 March 2014

This supplementary supports the main text as follows:

Table S1. Mean, standard deviation (SD) and coefficient of variation (CV) (%) of the HDRF across the three bands within the proposed site 2 (Figure 8) for the years under study.

Date YYYY MM DD	TM Band 2			TM Band 3			TM Band 4		
	Mean	STD	CV (%)	Mean	STD	CV (%)	Mean	STD	CV (%)
1984 08 03	66.3	1.03	1.56	65.48	0.91	1.39	65.79	0.91	1.39
1989 08 16	60.04	0.83	1.38	63.82	0.72	1.13	56.63	2.81	4.96
1998 08 26	64.79	0.98	1.51	67.5	0.75	1.12	55.35	0.85	1.54
2000 08 15	66.91	1.57	2.34	70.42	1.32	1.88	59.4	1.06	1.79
2003 08 08	62.3	1.01	1.62	62.59	0.83	1.33	57.44	0.91	1.59
2006 07 31	60.33	0.96	1.59	61.08	0.84	1.37	58.45	0.7	1.19
2006 08 16	59.91	1.08	1.8	60.23	0.75	1.24	55.76	0.78	1.39
2009 07 30	68.82	1.57	2.28	66.98	1.1	1.64	61.73	1.03	1.67
2009 08 15	66.51	1.29	1.93	66.17	0.97	1.47	63.7	1.04	1.64
2009 08 31	63.48	1.12	1.77	63.14	0.88	1.4	61.92	1.01	1.63

Table S2. Mean, standard deviation (SD) and coefficient of variation (CV) (%) of the HDRF across the three bands for the large contiguous area indicated in Figure 7.

Date YYYY MM DD	TM Band 2			TM Band 3			TM Band 4		
	Mean	STD	CV (%)	Mean	STD	CV (%)	Mean	STD	CV (%)
1984 08 03	63.35	2.26	3.56	65.51	0.83	1.26	64.93	2.16	3.33
1989 08 16	58.94	2.69	4.56	62.83	3.46	5.51	52.16	11.51	22.08
1998 08 26	61.44	2.52	4.1	64.57	2.02	3.14	55.02	1.65	3
2000 08 15	60.81	2.4	3.95	64.05	2.19	3.43	55.36	1.71	3.09
2003 08 08	58.61	2.56	4.37	59.24	2.67	4.5	56.65	2.97	5.25
2006 07 31	57.03	2.08	3.65	57.55	1.83	3.19	56.36	2.12	3.76
2006 08 16	57.14	2.24	3.92	57.18	1.94	3.38	53.99	2.3	4.26
2009 07 30	65.87	1.73	2.63	64.72	1.35	2.08	59.47	1.44	2.42
2009 08 15	62.44	1.69	2.7	63.05	1.34	3.13	59.5	1.62	2.73
2009 08 31	59.25	1.65	2.78	59.94	1.37	2.28	57.26	1.68	2.94

Figure S1. G_i^* maps for bands 2–4 derived from Landsat TM images of 1984–2009.

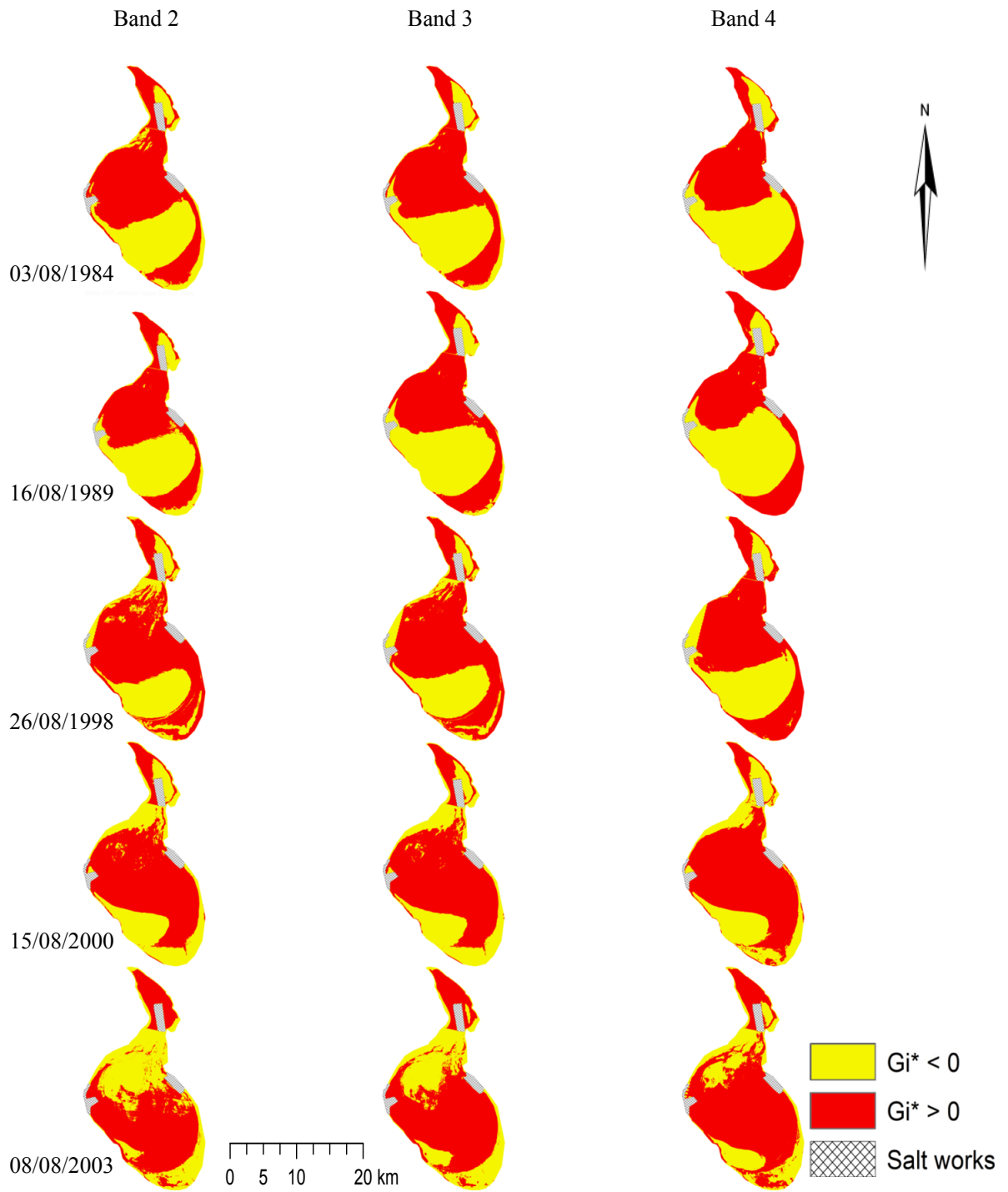


Figure S1. Cont.

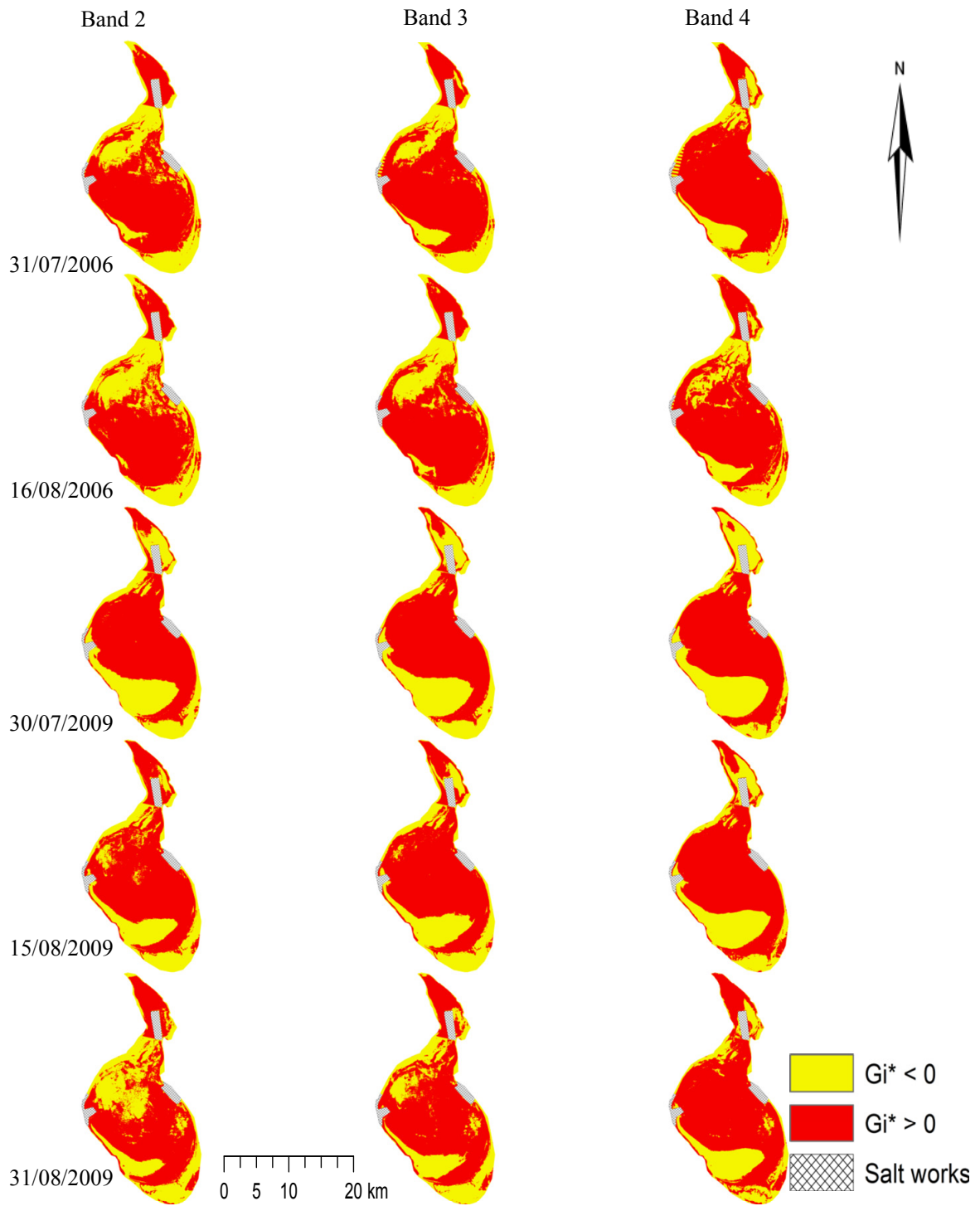


Figure S2. CV maps for bands 2–4 derived from Landsat TM images of 1984–2009.

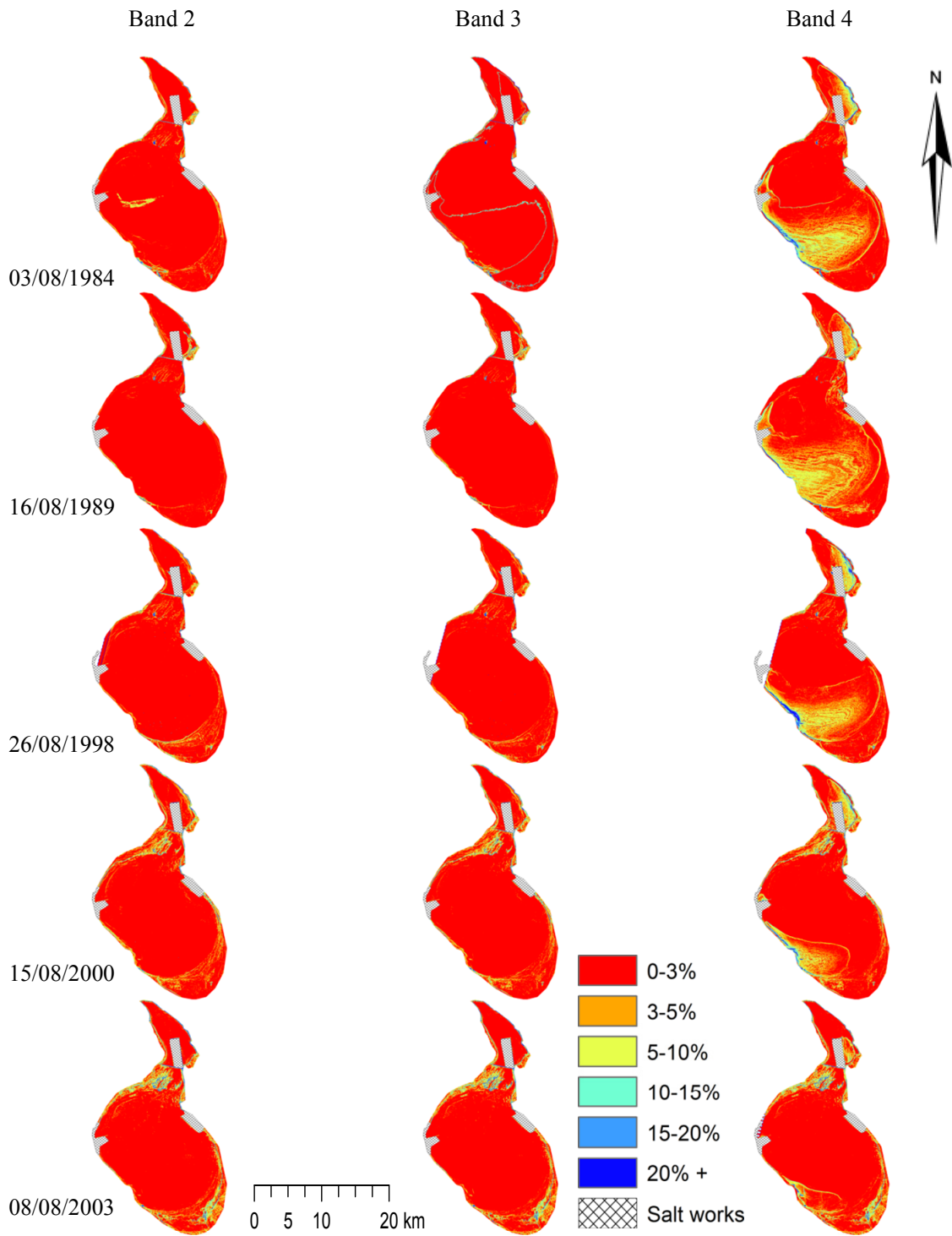


Figure S2. Cont.

