

Figure S1: Monthly lead frequencies, January to April, 2003. Frequency values are cut off at 0.5 to better highlight the variability at lower values.

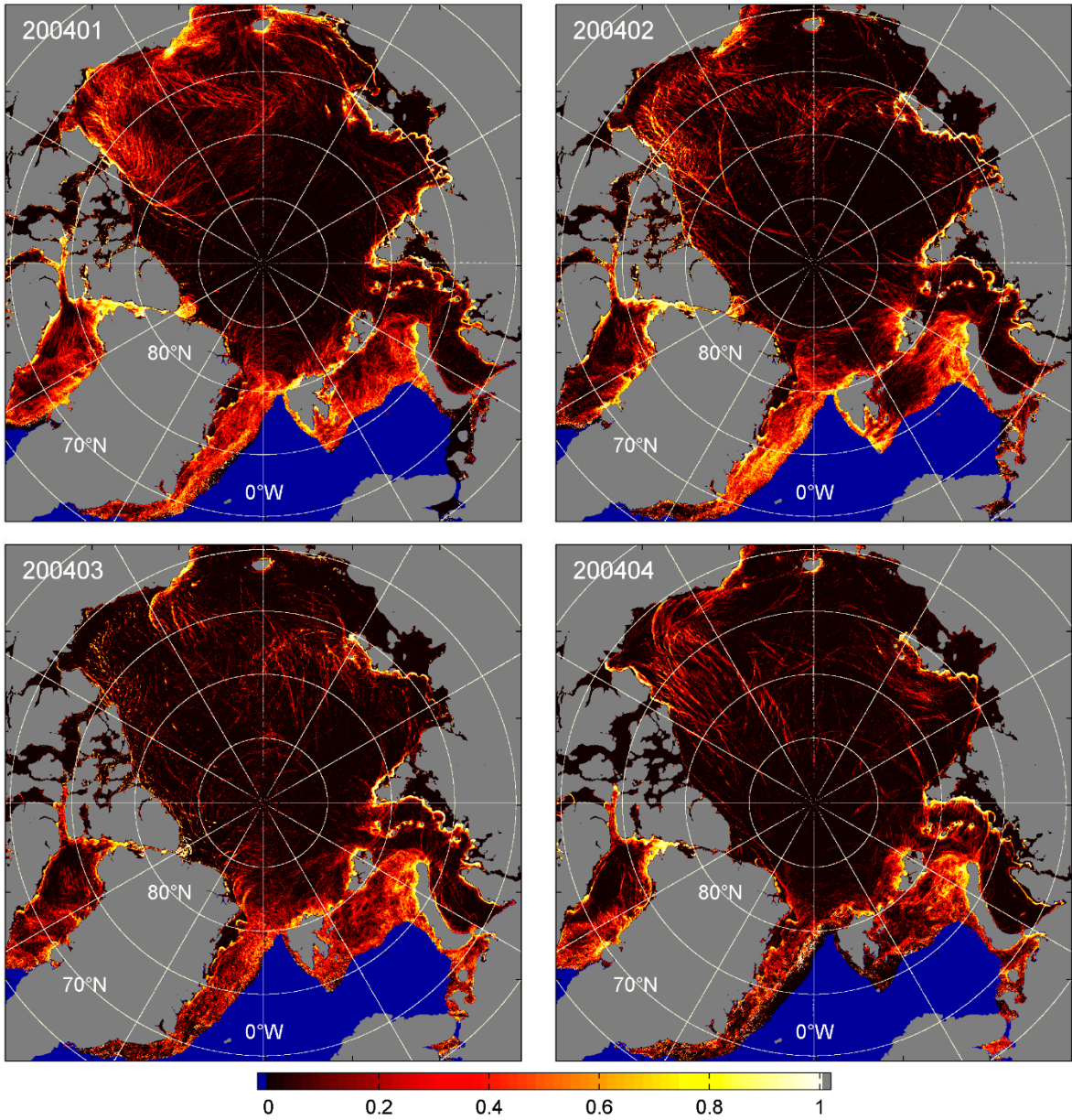


Figure S2: Monthly lead frequencies, January to April, 2004. Frequency values are cut off at 0.5 to better highlight the variability at lower values.



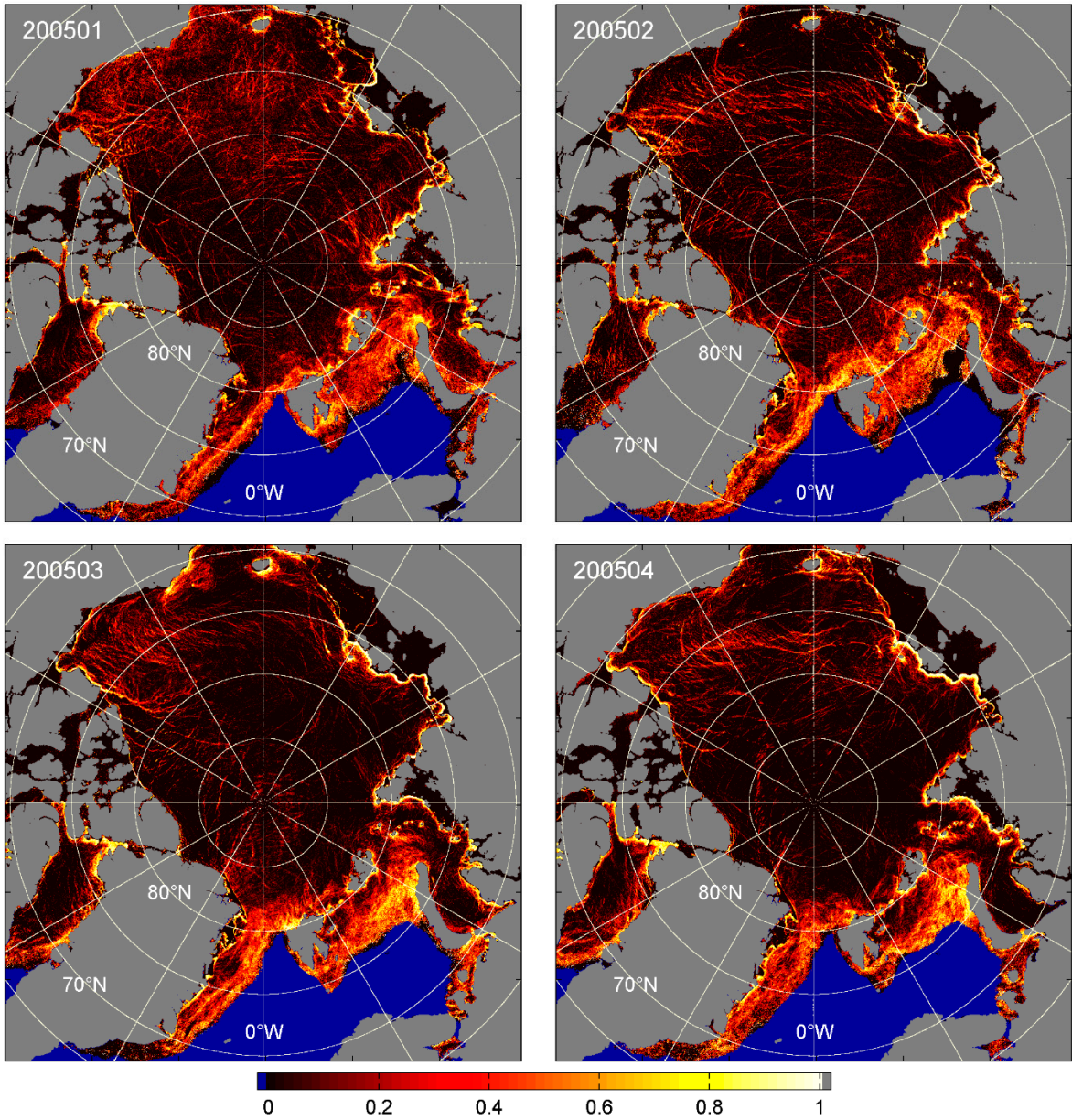


Figure S3: Monthly lead frequencies, January to April, 2005. Frequency values are cut off at 0.5 to better highlight the variability at lower values.

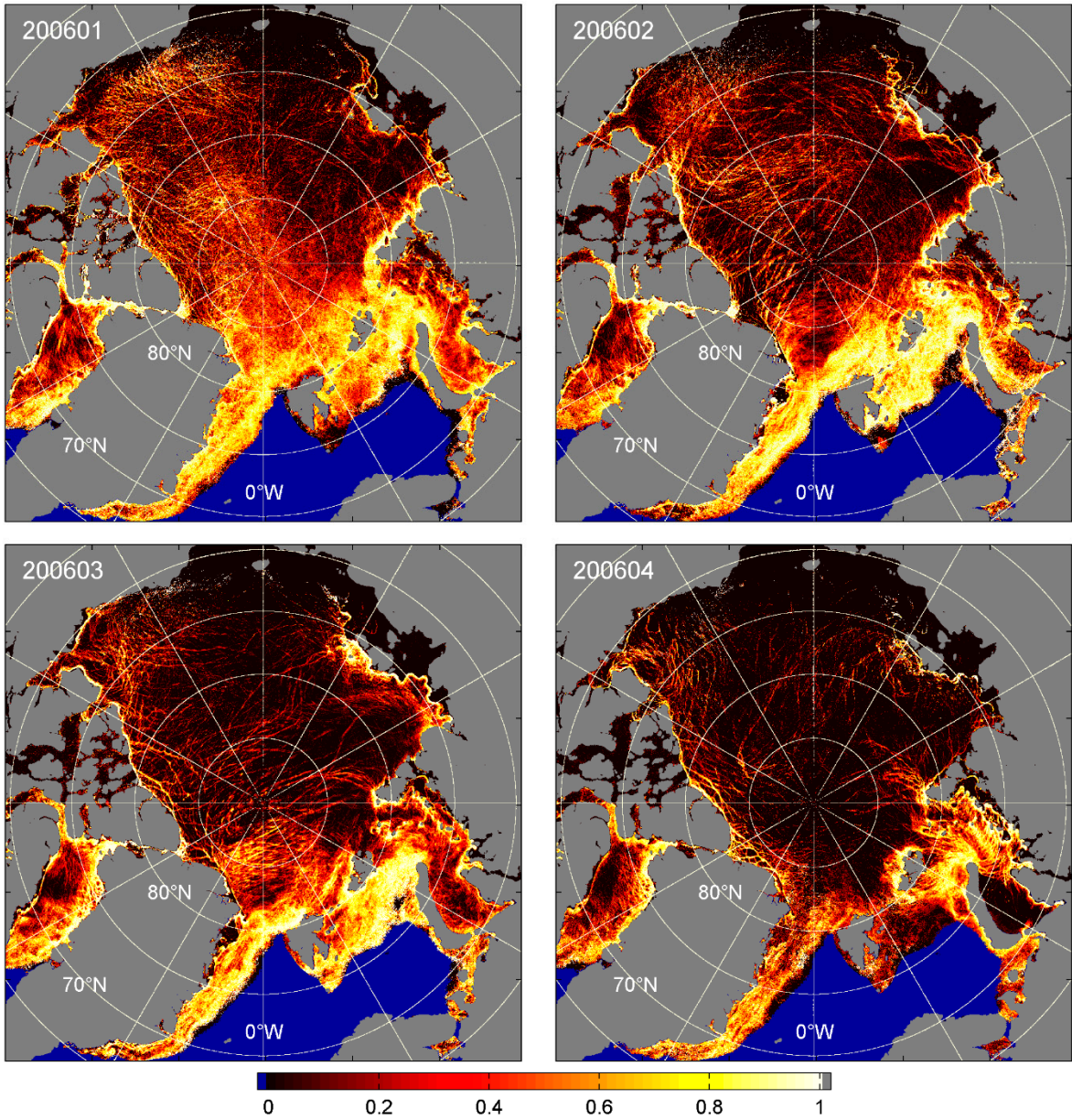


Figure S4: Monthly lead frequencies, January to April, 2006. Frequency values are cut off at 0.5 to better highlight the variability at lower values.



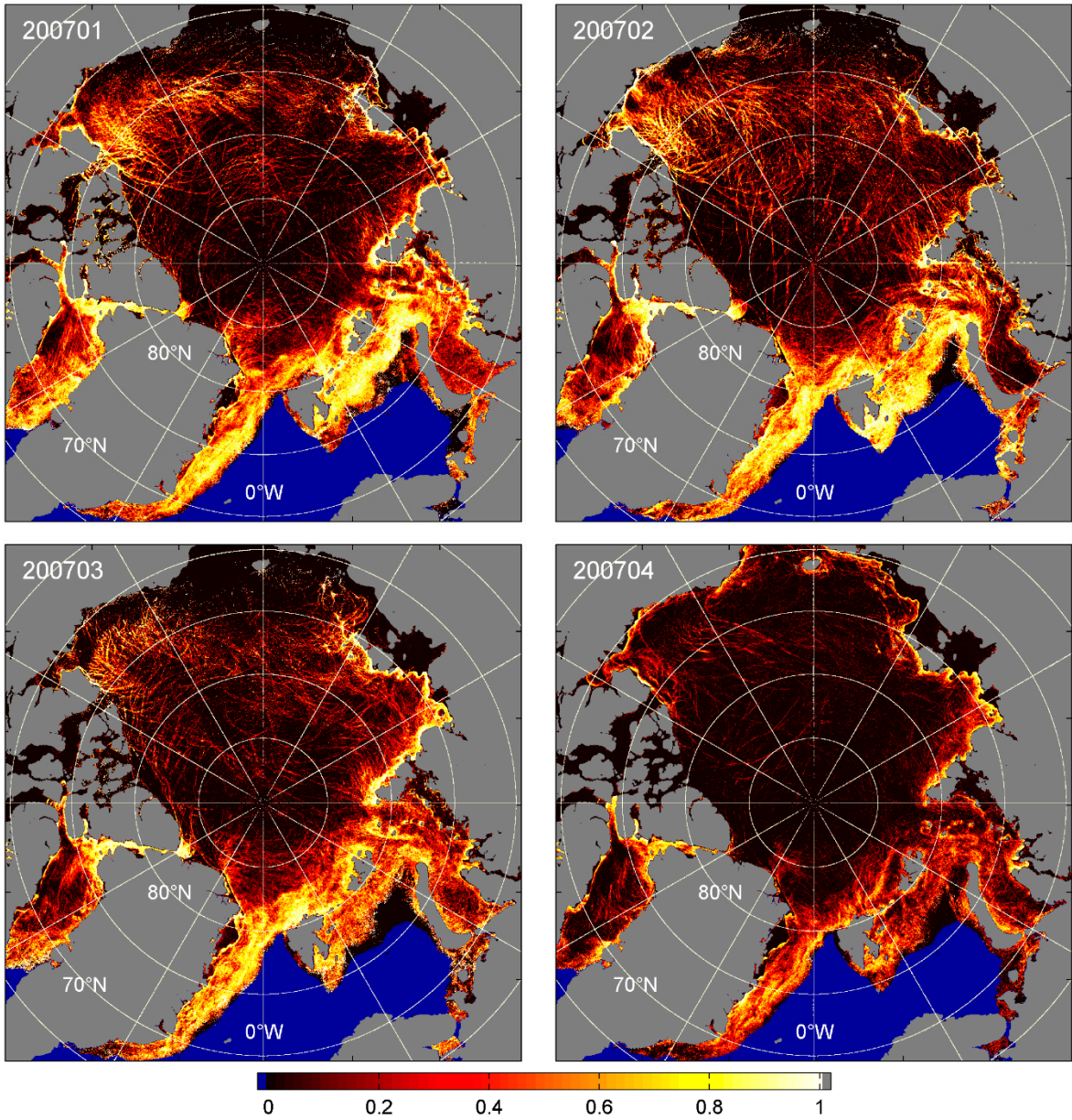


Figure S5: Monthly lead frequencies, January to April, 2007. Frequency values are cut off at 0.5 to better highlight the variability at lower values.

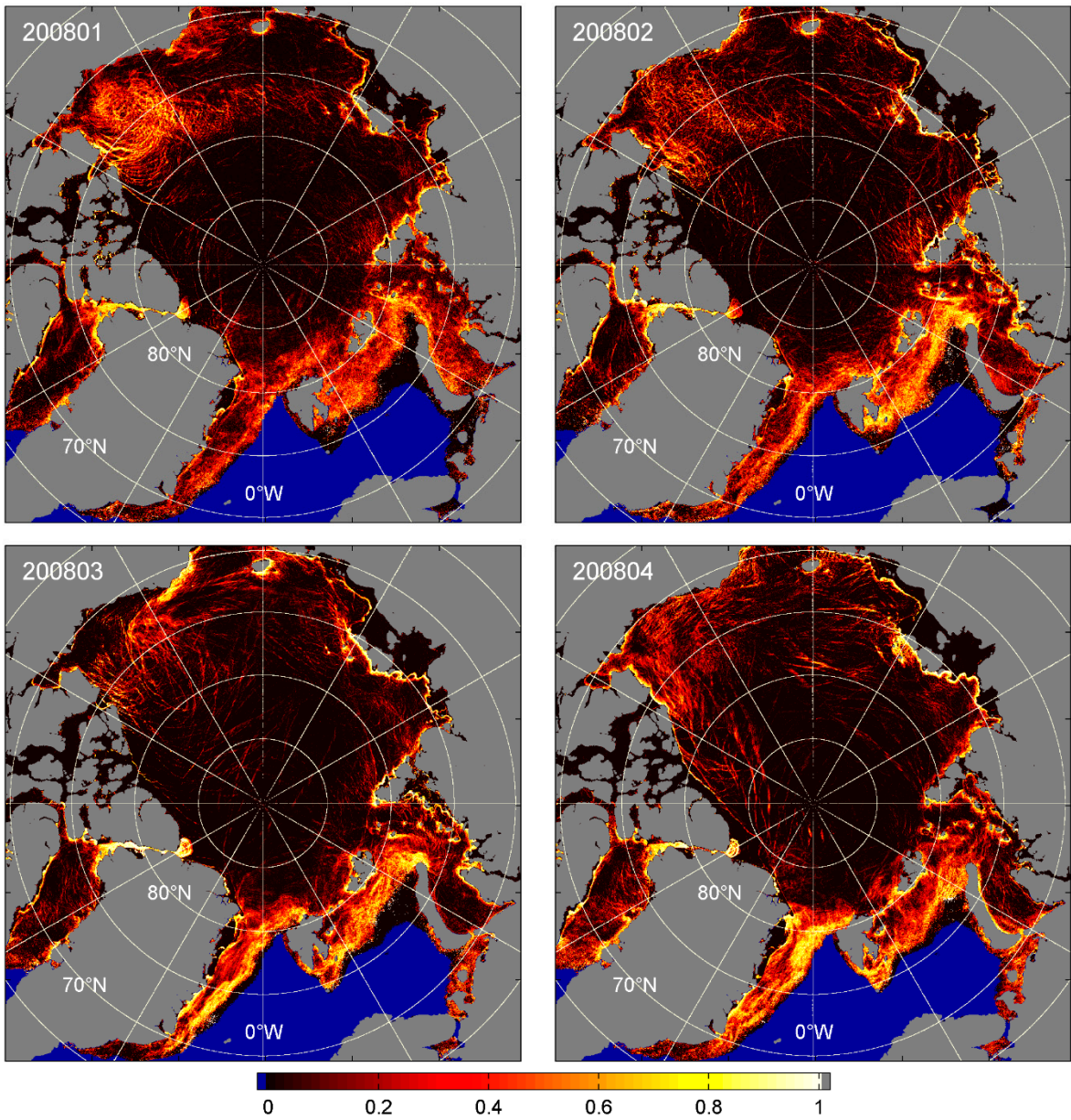


Figure S6: Monthly lead frequencies, January to April, 2008. Frequency values are cut off at 0.5 to better highlight the variability at lower values.



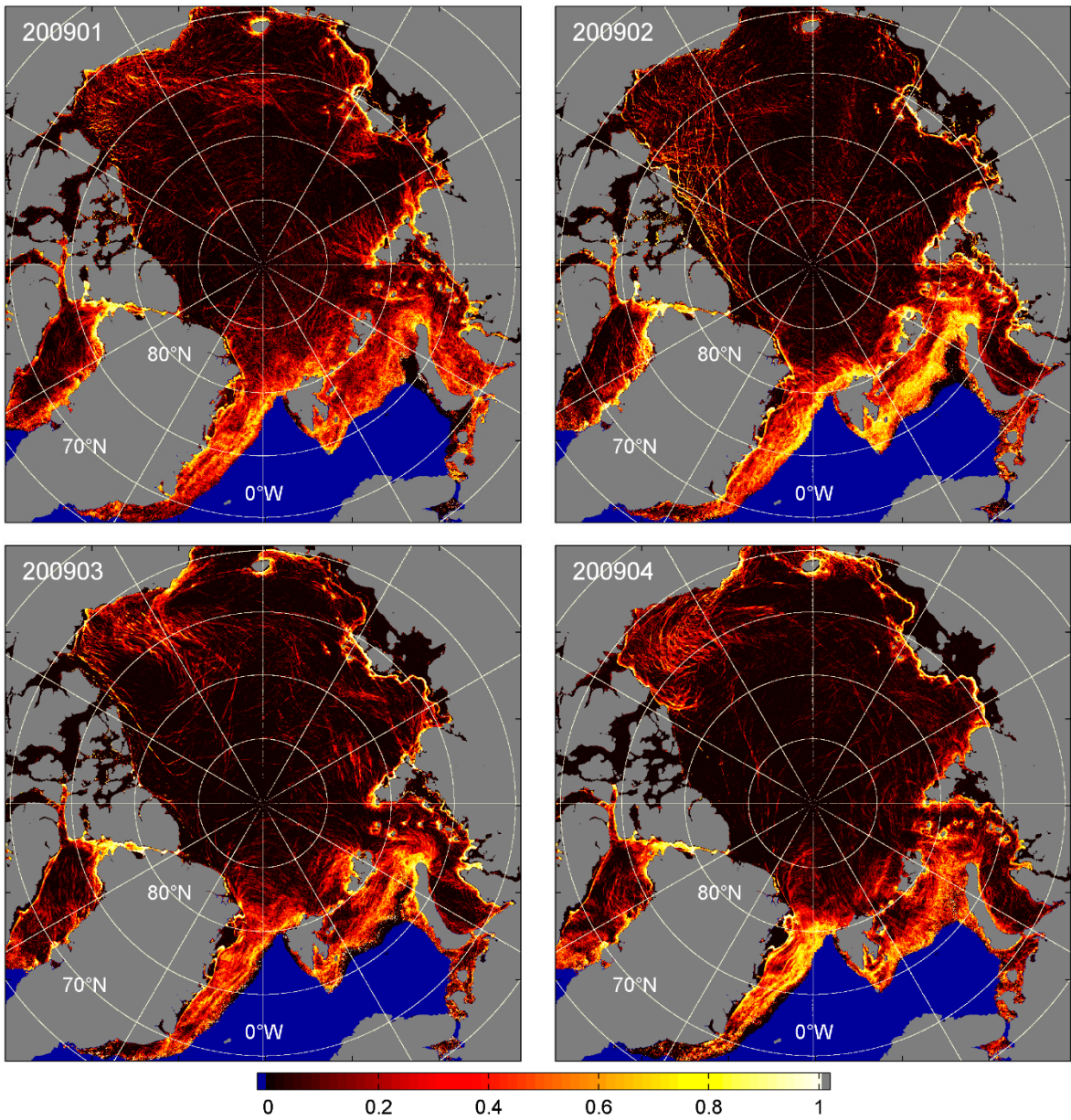


Figure S7: Monthly lead frequencies, January to April, 2009. Frequency values are cut off at 0.5 to better highlight the variability at lower values.

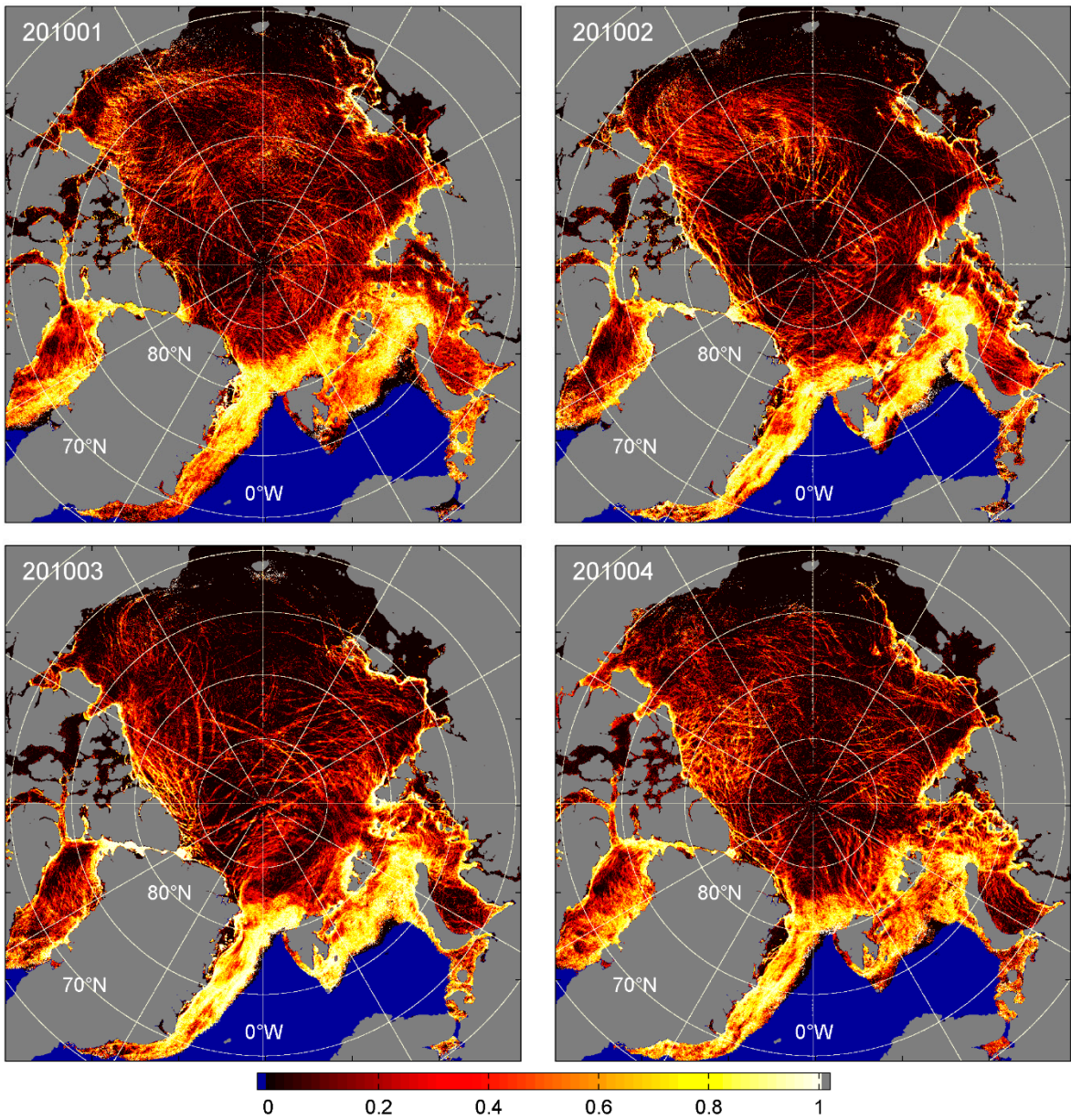


Figure S8: Monthly lead frequencies, January to April, 2010. Frequency values are cut off at 0.5 to better highlight the variability at lower values.



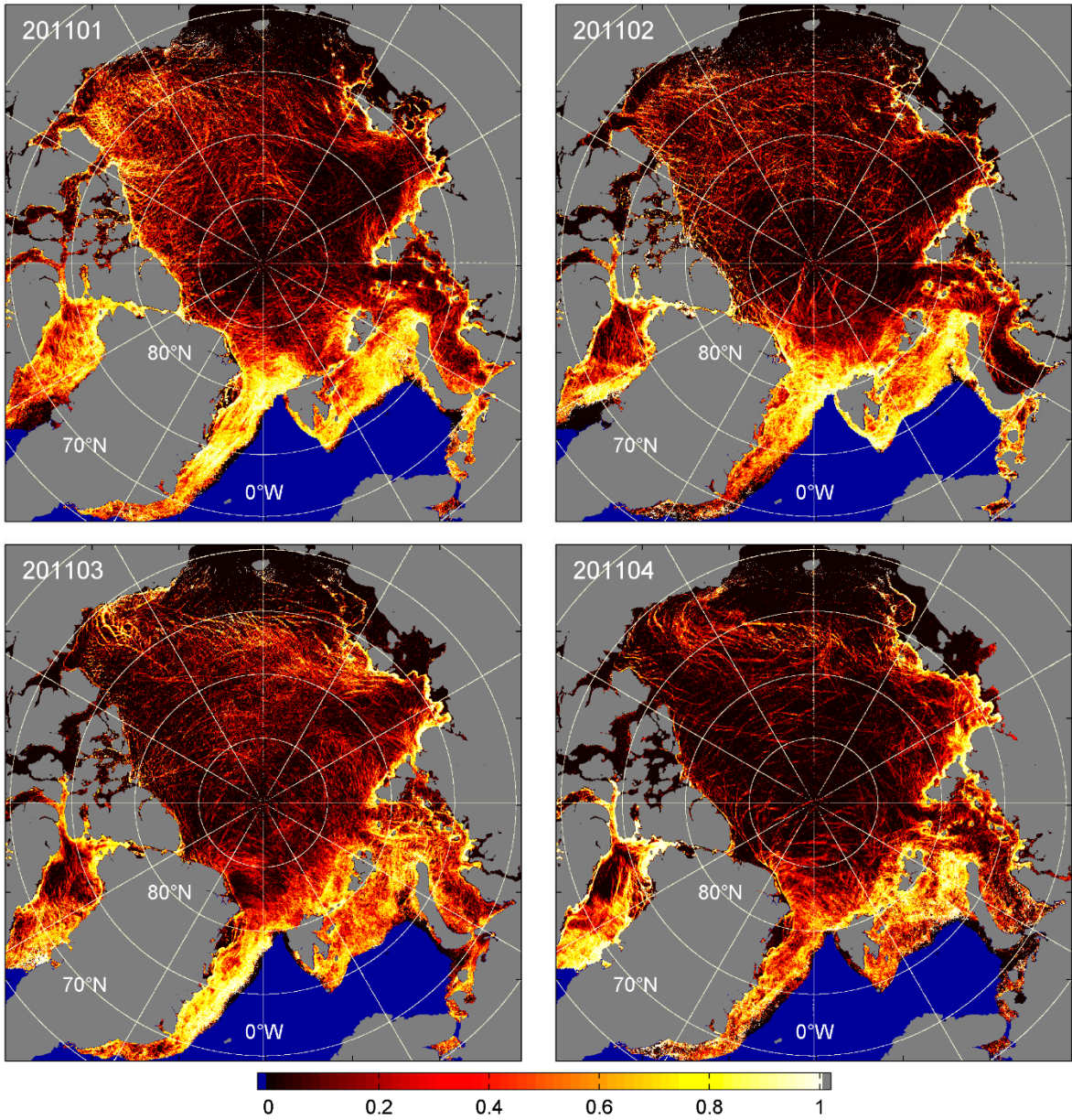


Figure S9: Monthly lead frequencies, January to April, 2011. Frequency values are cut off at 0.5 to better highlight the variability at lower values.

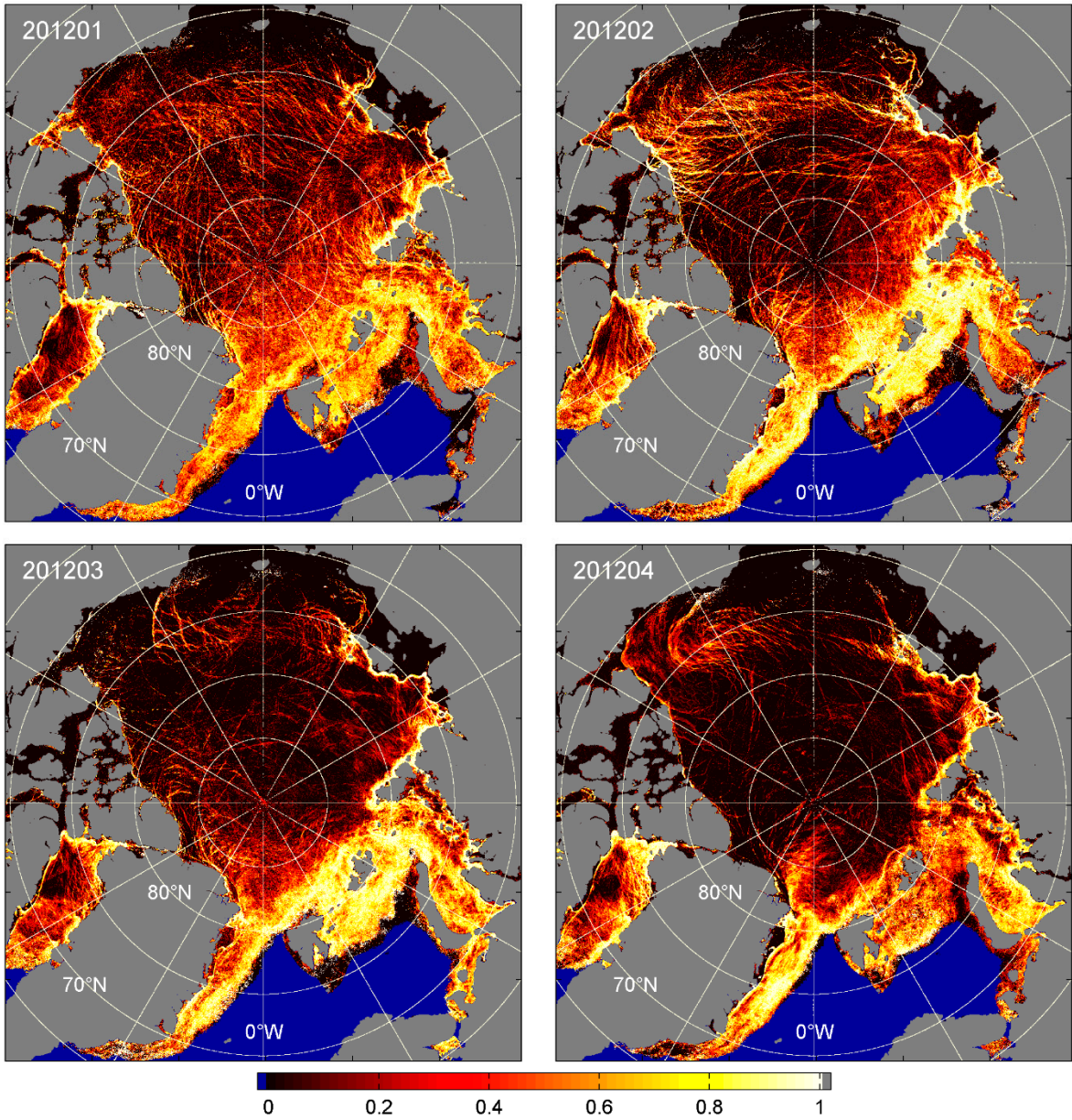


Figure S10: Monthly lead frequencies, January to April, 2012. Frequency values are cut off at 0.5 to better highlight the variability at lower values.



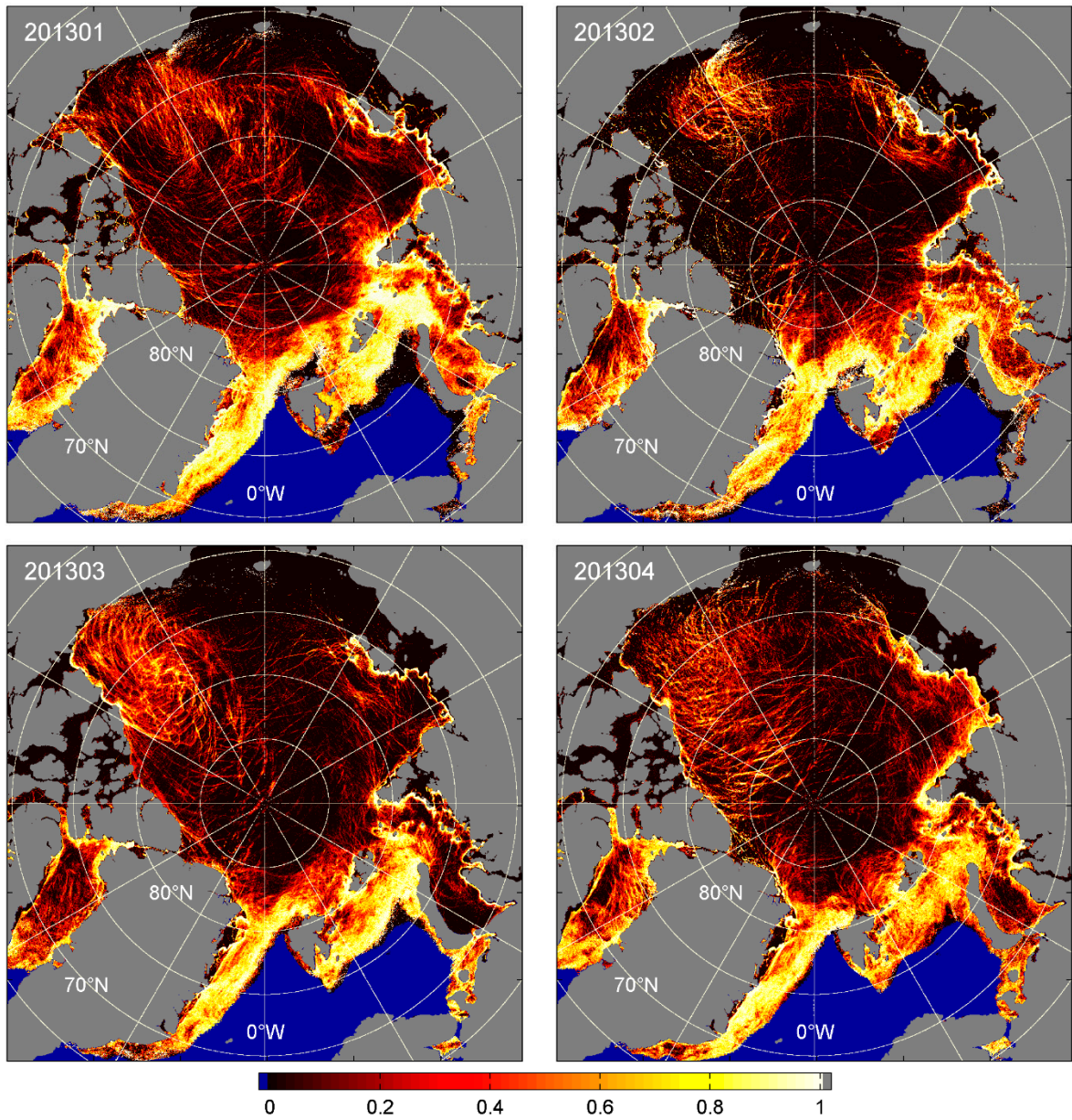


Figure S11: Monthly lead frequencies, January to April, 2013. Frequency values are cut off at 0.5 to better highlight the variability at lower values.

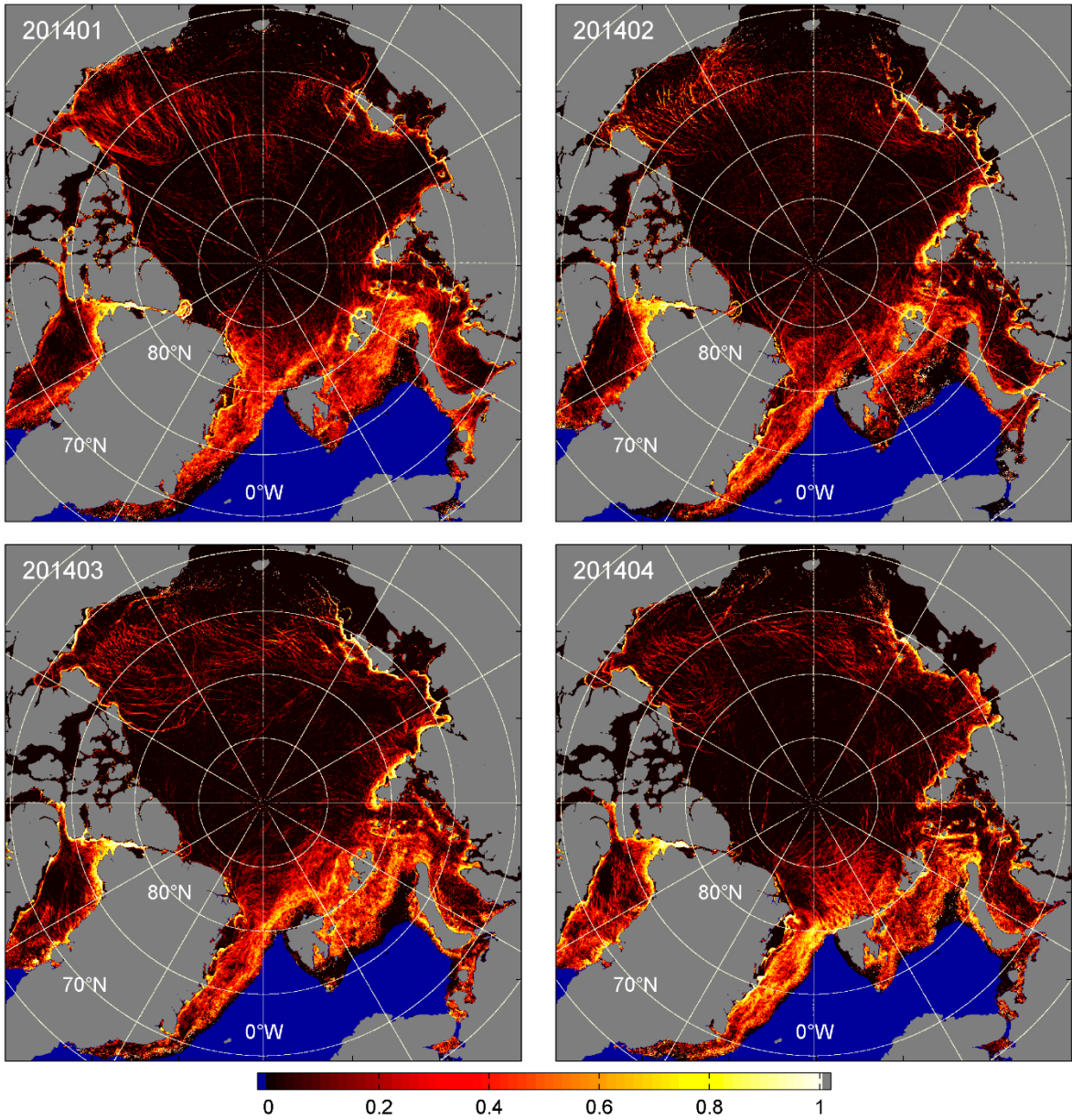


Figure S12: Monthly lead frequencies, January to April, 2014. Frequency values are cut off at 0.5 to better highlight the variability at lower values.



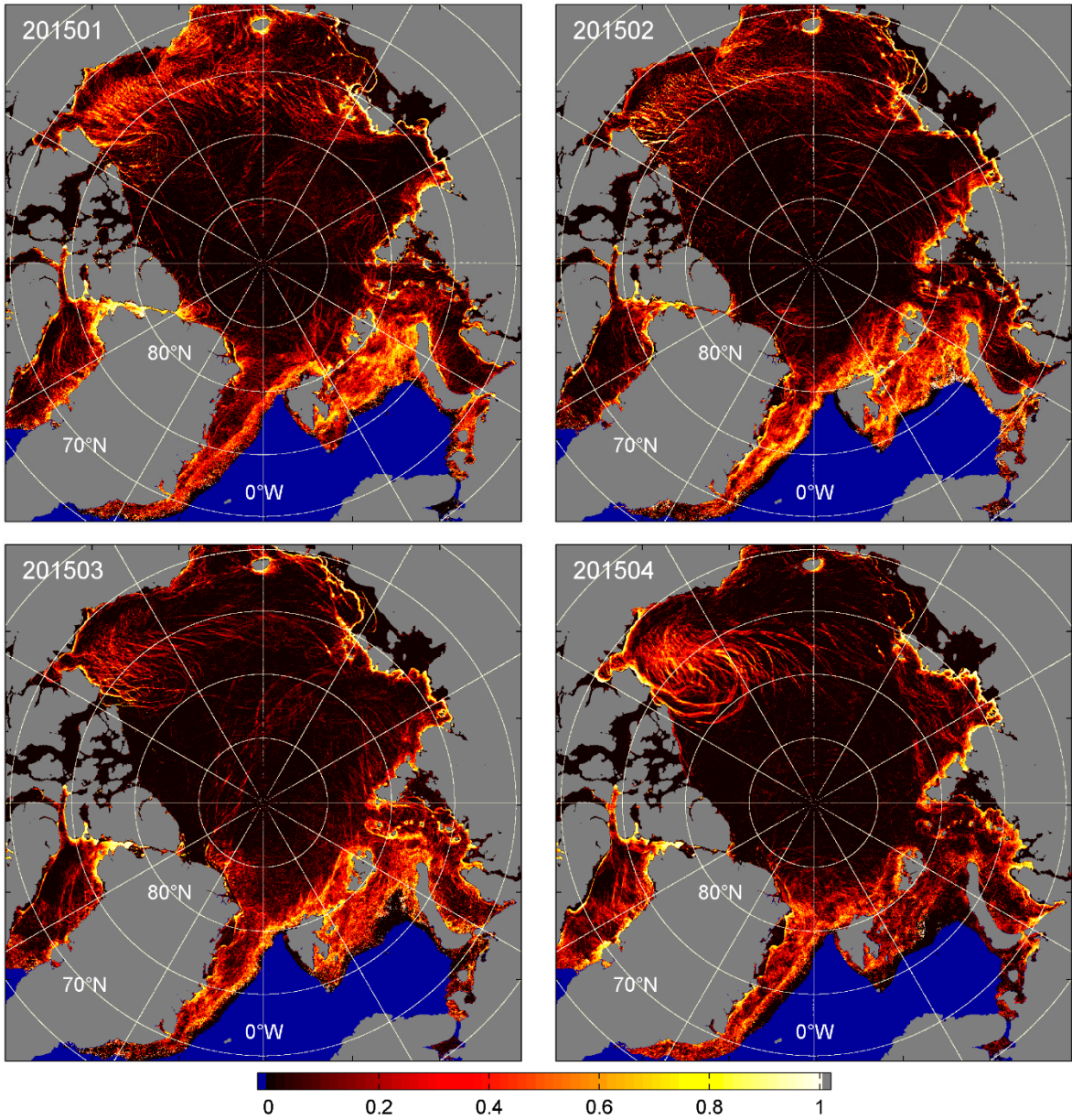


Figure S13: Monthly lead frequencies, January to April, 2015. Frequency values are cut off at 0.5 to better highlight the variability at lower values.