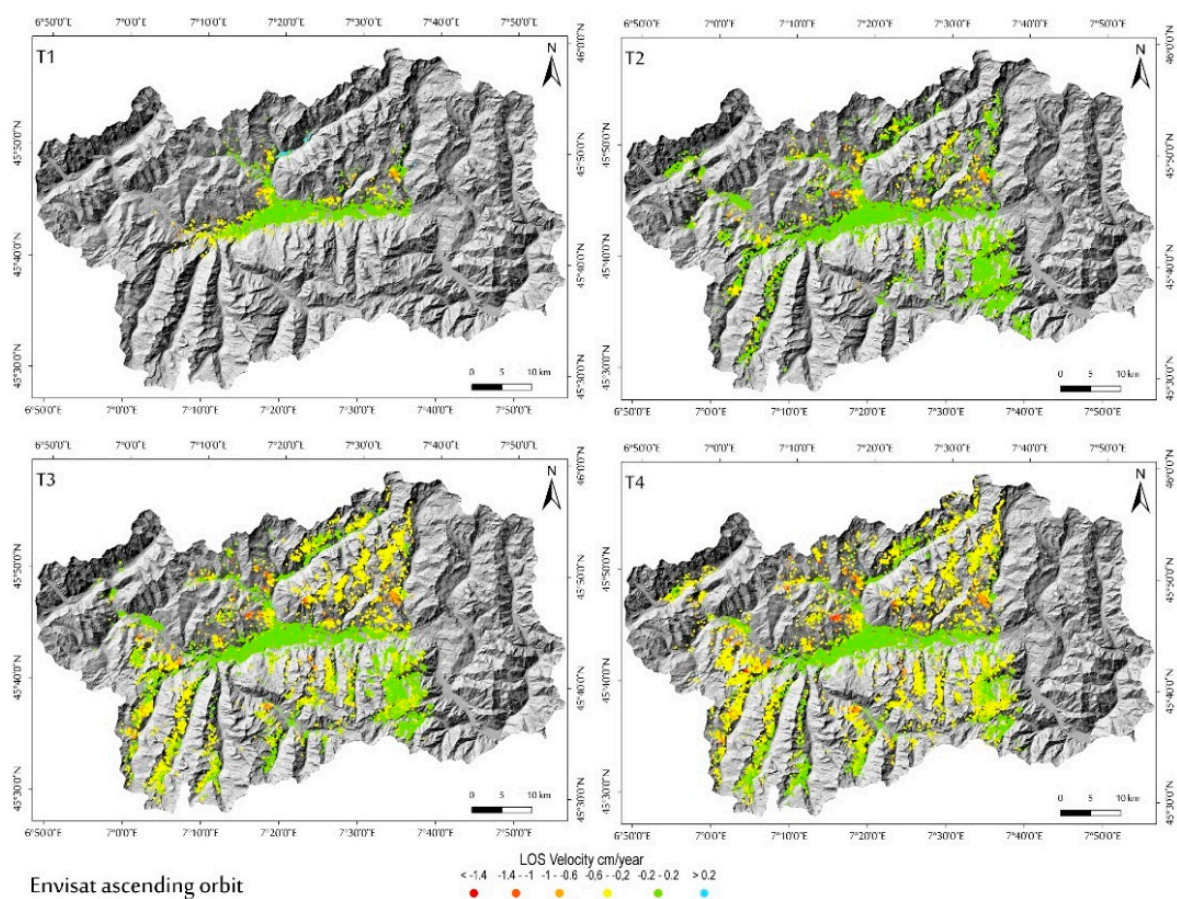


Supplementary Materials: Taking Advantage of the ESA G-POD Service to Study Ground Deformation Processes in High Mountain Areas: A Valle d'Aosta Case Study, Northern Italy

Martina Cignetti, Andrea Manconi, Michele Manunta, Daniele Giordan, Claudio De Luca, Paolo Allasia and Francesca Ardizzone



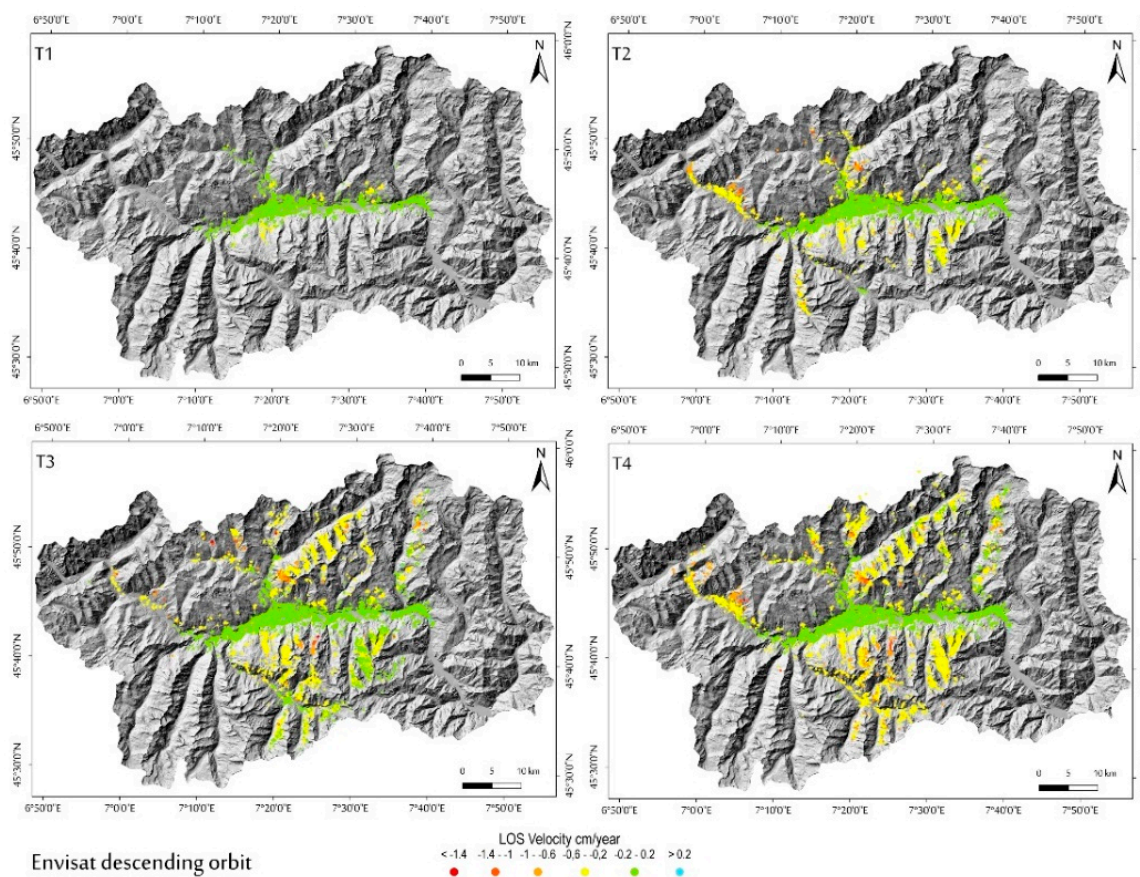


Figure S1. Maps of surface velocities measured along the satellite LOS, for the Envisat dataset in ascending and descending orbit. The four images represent the results of the performed tasks for each orbit using the GPOD-SBAS service.



© 2016 by the authors; licensee MDPI, Basel, Switzerland. This article is an open access article distributed under the terms and conditions of the Creative Commons by Attribution (CC-BY) license (<http://creativecommons.org/licenses/by/4.0/>).