

Supplementary Material: Automated Extraction and Mapping for Desert Wadis from Landsat Imagery in Arid West Asia

Yongxue Liu, Xiaoyu Chen, Yuhao Yang, Chao Sun and Siyu Zhang

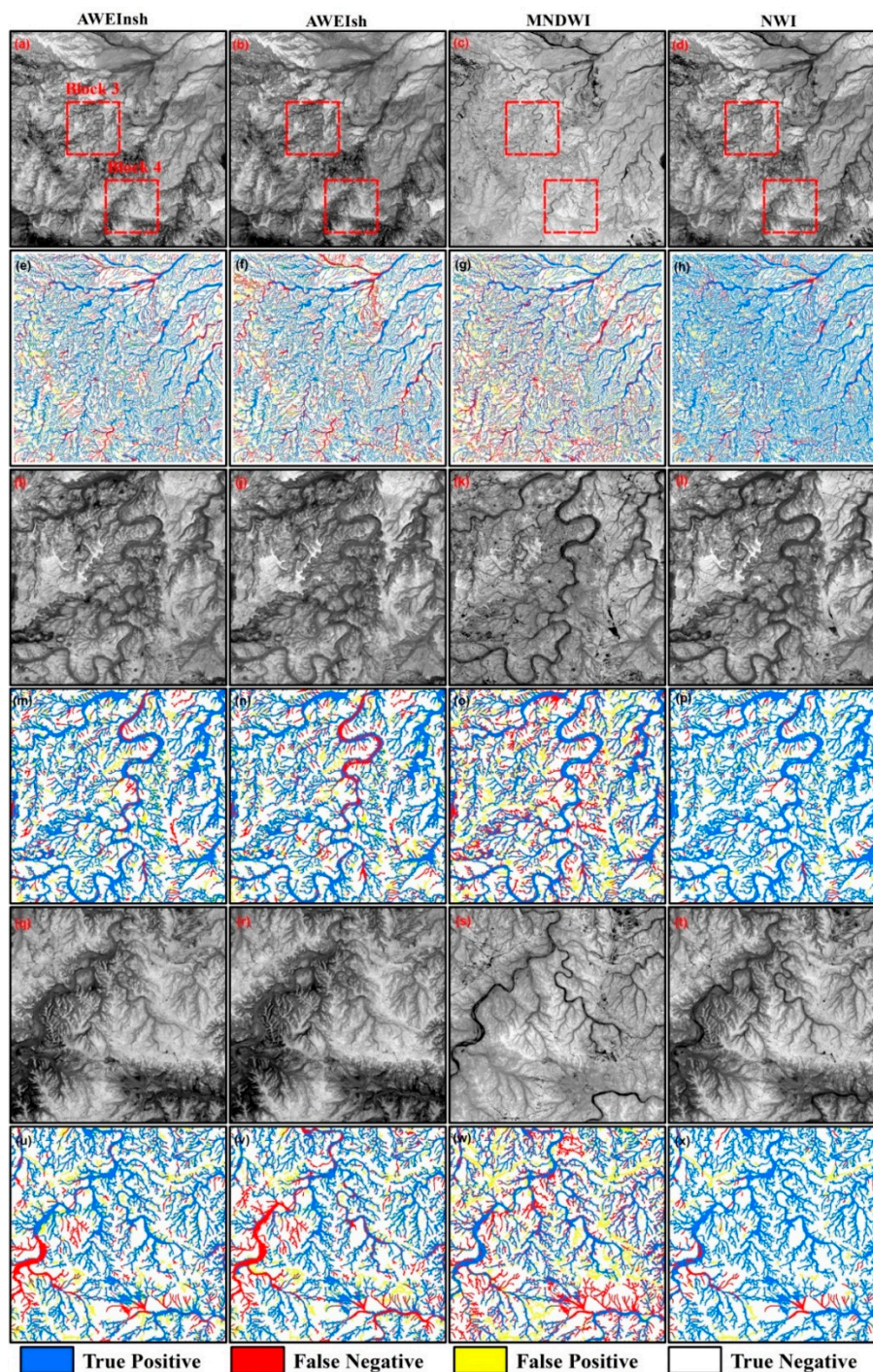


Figure S1. (a–d) WI images of Study Area 2; (e–h) wadi extraction results of Study Area 2; (i–l) WI images of Block 3; (m–p) wadi extraction results of Block 1; (q–t) WI images of Block 4; (u–x) wadi extraction results of Block 4.

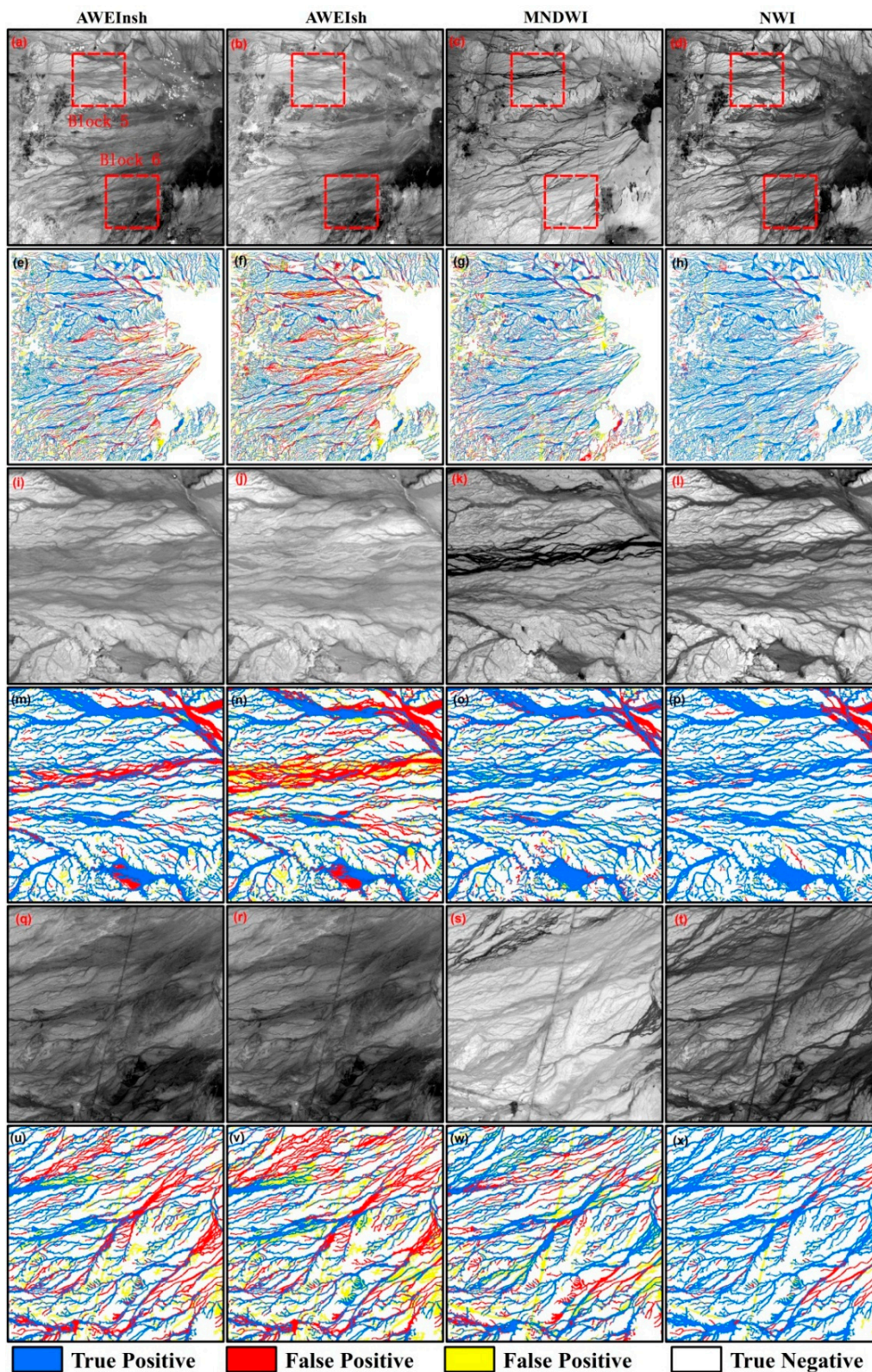


Figure S2. (a–d) WI images of Study Area 2; (e–h) wadi extraction results of Study Area 2; (i–l) WI images of Block 5; (m–p) wadi extraction results of Block 5; (q–t) WI images of Block 6; (u–x) wadi extraction results of Block 6.

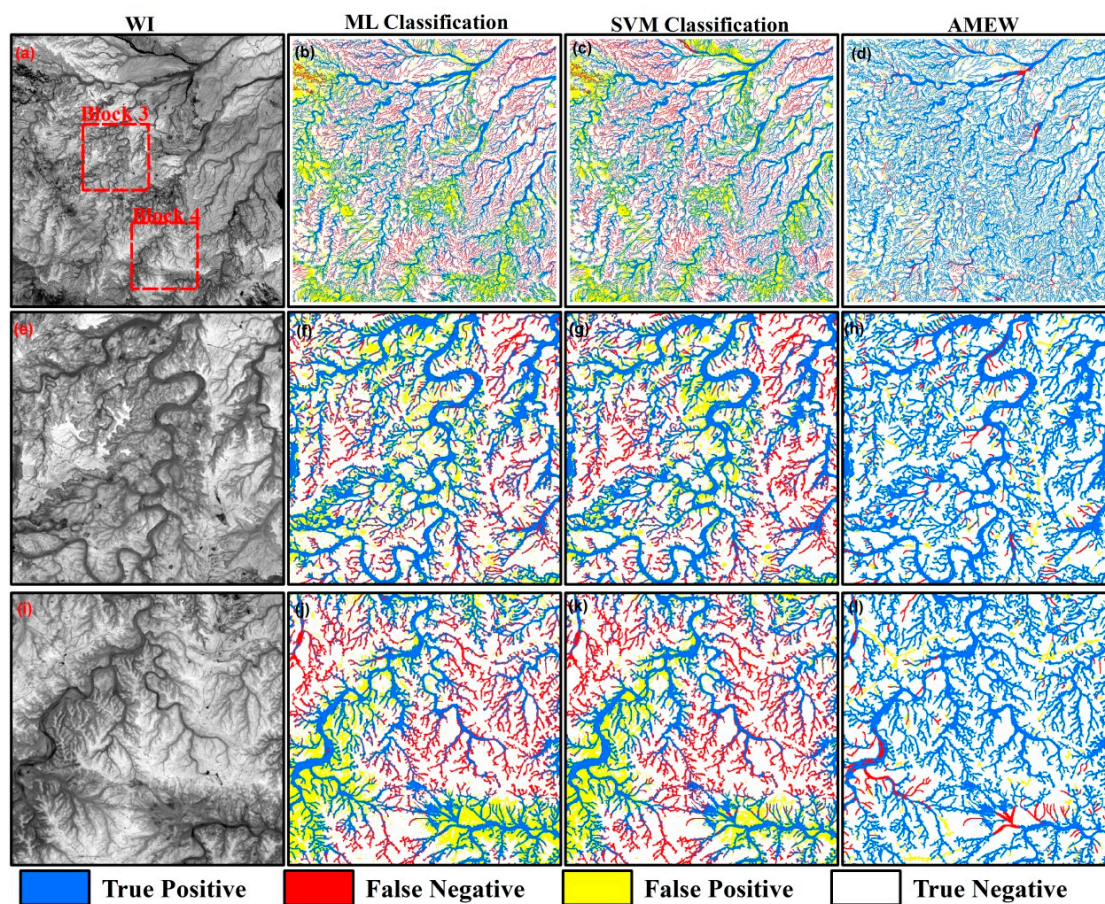


Figure S3. (a) NWI image of Study Area 2; (b–d) the extraction results of Study Area 2; (e) NWI image of Block 3; (f–h) the extraction results of Block 3; (i) NWI image of Block 4; (j–l) the extraction results of Block 4.

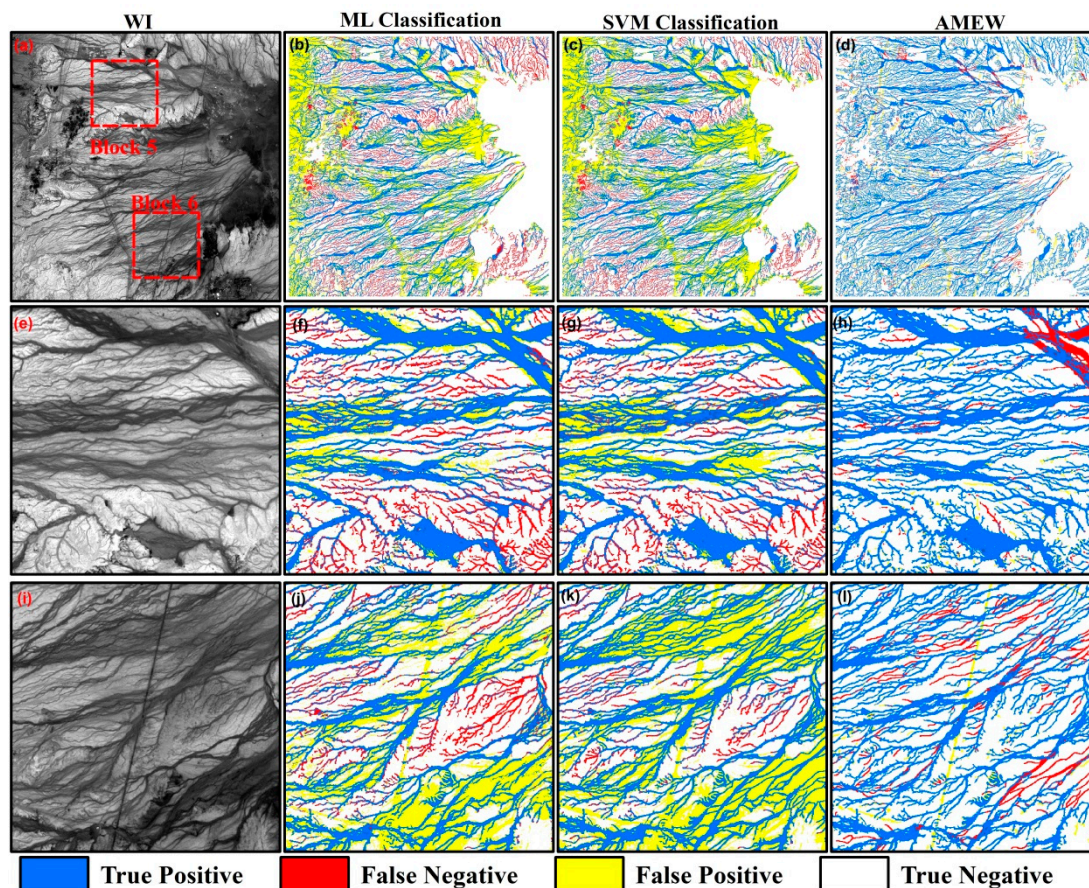


Figure S4. (a) NWI image of Study Area 3; (b–d) the extraction results of Study Area 3; (e) NWI image of Block 5; (f–h) the extraction results of Block 5; (i) NWI image of Block 6; (j–l) the extraction results of Block 6.



© 2016 by the authors; licensee MDPI, Basel, Switzerland. This article is an open access article distributed under the terms and conditions of the Creative Commons by Attribution (CC-BY) license (<http://creativecommons.org/licenses/by/4.0/>).