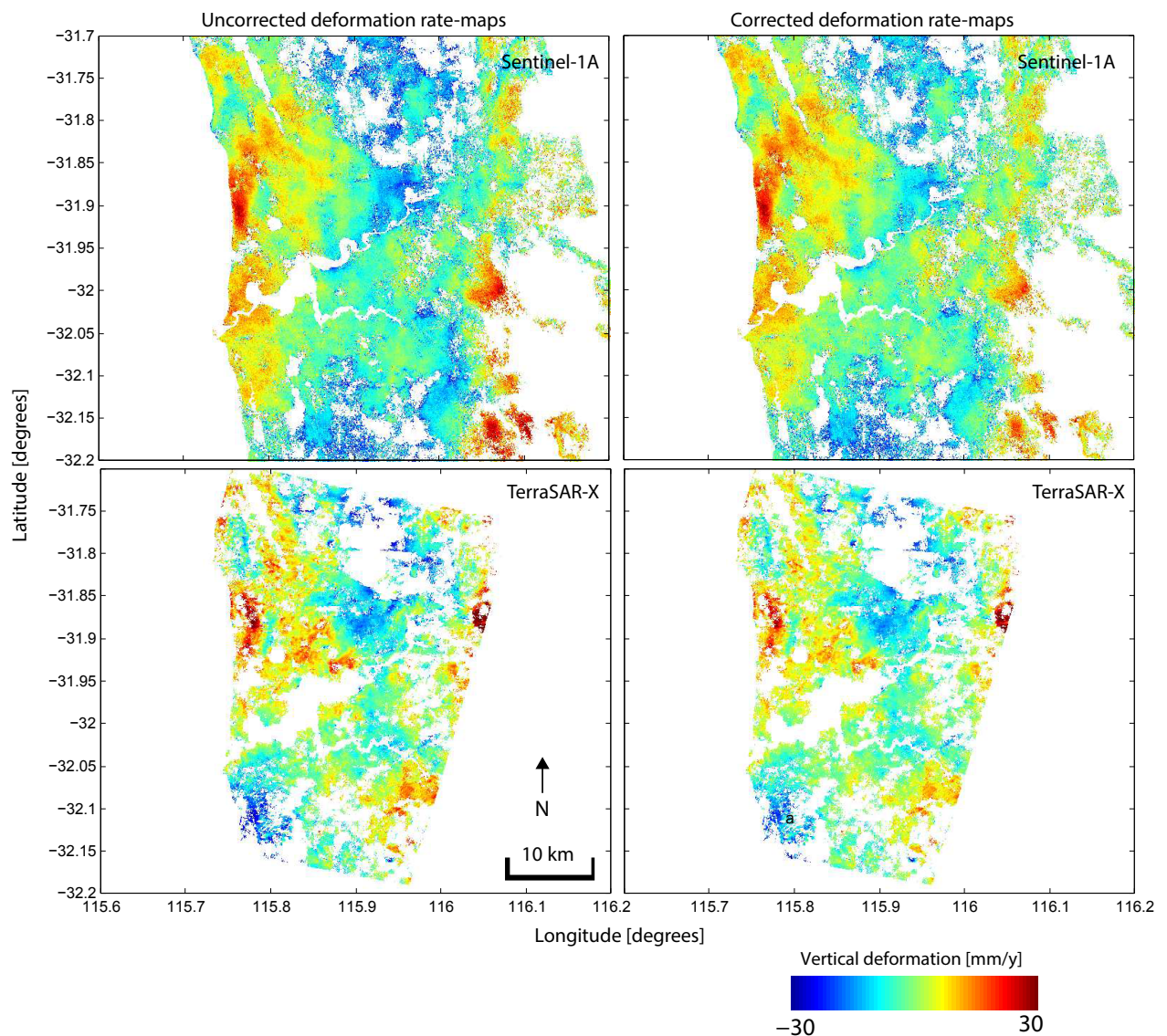


# Supplementary Materials: First results from Sentinel-1A InSAR over Australia: application to the Perth Basin

Amy L. Parker \*, Mick S. Filmer and Will E. Featherstone



**Figure S1.** Comparison between deformation rate-maps where atmospheric errors have not been corrected (left column) and where atmospheric errors have been reduced using ERA-I (right column). Top row: deformation rate-maps produced using 11 consecutive Sentinel-1A interferograms covering 27 August 2015–17 May 2016. Bottom row: deformation rate-maps produced using 21 consecutive TerraSAR-X interferograms spanning 29 August 2015–19 May 2016.