

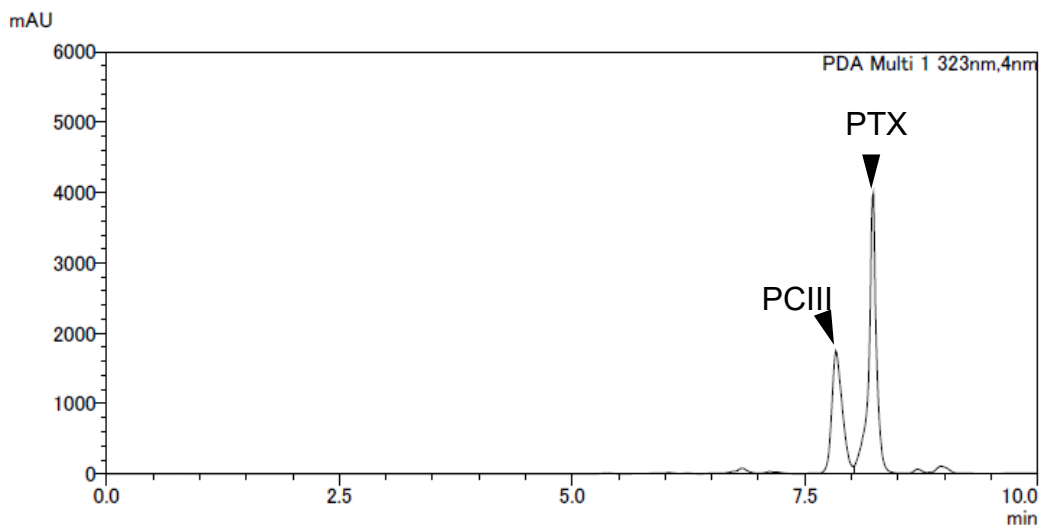
Supplementary Table S1. Composition of experimental diets used in this study

	Experimental group			
	Control	Regular dose DPC	Low dose DPC	Low dose nano-DPC
Composition of experimental diet (g/100g)				
Casein	20.0	20.0	20.0	20.0
$\beta$ -corn starch	15.0	15.0	15.0	15.0
Cellulose	5.00	5.00	5.00	5.00
AIN-76 mineral mix	3.50	3.50	3.50	3.50
AIN-76 vitamin mix	1.00	1.00	1.00	1.00
DL-methionine	0.300	0.300	0.300	0.300
Choline bitartrate	0.200	0.200	0.200	0.200
Corn oil	20.0	20.0	20.0	20.0
Purified DPC	-	0.069	0.00069	-
Sucrose		to make 100		

Supplementary Table S2. Total food and energy intake, and fecal lipid excretion

	Experimental group			
	Control	Regular dose DPC	Low dose DPC	Low dose nano-DPC
Total food intake (g)	199 $\pm$ 1	197 $\pm$ 1	198 $\pm$ 1	199 $\pm$ 1
Total energy intake (kcal)	914 $\pm$ 5	904 $\pm$ 8	912 $\pm$ 3	914 $\pm$ 4
Fecal lipid excretion (mg/3days)	395 $\pm$ 32	384 $\pm$ 16	359 $\pm$ 23	362 $\pm$ 11

Data are shown as the means  $\pm$  SEM.



Supplementary Fig. 1 HPLC chromatogram of DPC concentrate

Notes: PCIII: peucedanocoumain III, PTX: pteryxin.