

Supplementary Materials

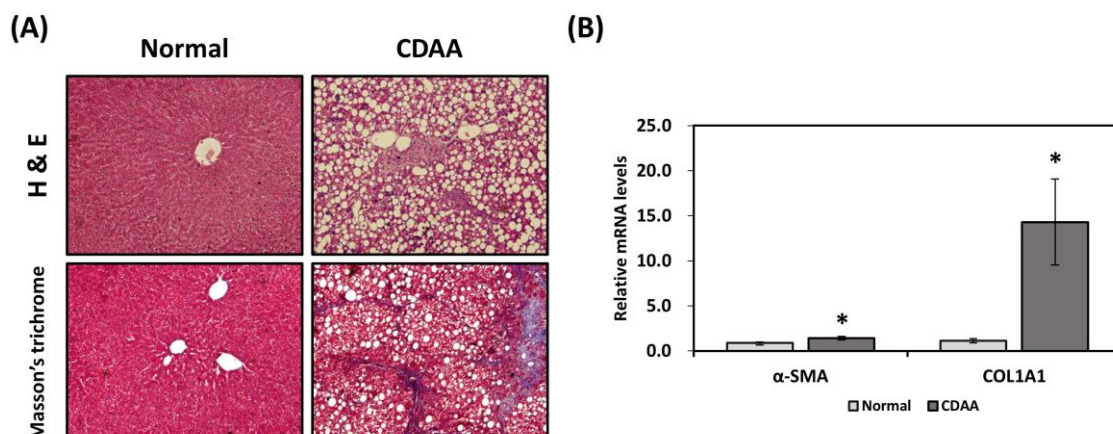


Figure S1. Mice on a CDAA diet develop hepatic fibrosis. **(A)** C57BL/6 mice were fed with a control or CDAA diet for 16 weeks. Liver sections were stained with H & E for histological evaluation and Masson's trichrome for collagen deposition. **(B)** Hepatic gene expression of α -smooth muscle actin (α -SMA) and collagen 1 α 1 (COL1A1) was determined using quantitative RT-PCR. *, statistically significant compared with the normal diet group at $p < 0.05$.

Table S1. List of primers used in this study.

| Gene name | Species | Forward primer | Reverse primer |
|----------------|---------|---------------------------|--------------------------|
| PEDF | Human | CGACCAACGTGCTCCTGTCT | GATGTCTGGGCTGCTGATCA |
| ATGL | Human | CAACGCCACGCACATCTAC | CAATGAACCTGGCACCAGCC |
| PPAR γ | Human | GATGACAGCGACTTGGCAAT | TGAGGACTCAGGGTGGTTCA |
| CD36 | Human | GTGATGATGAACAGCAGCAACA | CCTCAGCGTCCTGGGTACA |
| FABP1 | Human | GCTGGGTCCAAAGTGATCCA | TGTCACCTTCCAACTGAACCA |
| FATP2 | Human | AGCGGATTGAAGGCAGATGA | AGTCCGCAAGGCAAGAGTAG |
| FATP4 | Human | AAGCACAGAACACCTGGACC | GTGGTGCCGGATGTGTAGAT |
| β -actin | Human | TCTGGCACCACACCTTCTACAATG | AGCACAGCCTGGATAGCAACG |
| PEDF | Mouse | ACGATACGGCTTGGACTCTG | GTCAAGTTCTGGGTCACGGT |
| ATGL | Mouse | GCCAACGCCACTCACATCTA | AATGTTGGCACCTGCTTCAC |
| PPAR γ | Mouse | AGAGGGCCAAGGATTCATGACCAGG | TTCAGCTTGAGCTGCAGTTCAGGG |
| CD36 | Mouse | TGGCCAAGCTATTGCGACAT | TTCAGATCCGAACACAGCGT |
| α -SMA | Mouse | GACAGGATGCAGAAGGAGATCAC | AGCCACCGATCCAGACAGAGT |
| COL1A1 | Mouse | CGTCTGGTTTGGAGAGAGCAT | TGGACATTAGGCGCAGGAA |
| β -actin | Mouse | TGTCCACCTTCCAGCAGATGT | AGCTCAGTAACAGTCCGCCTAGA |