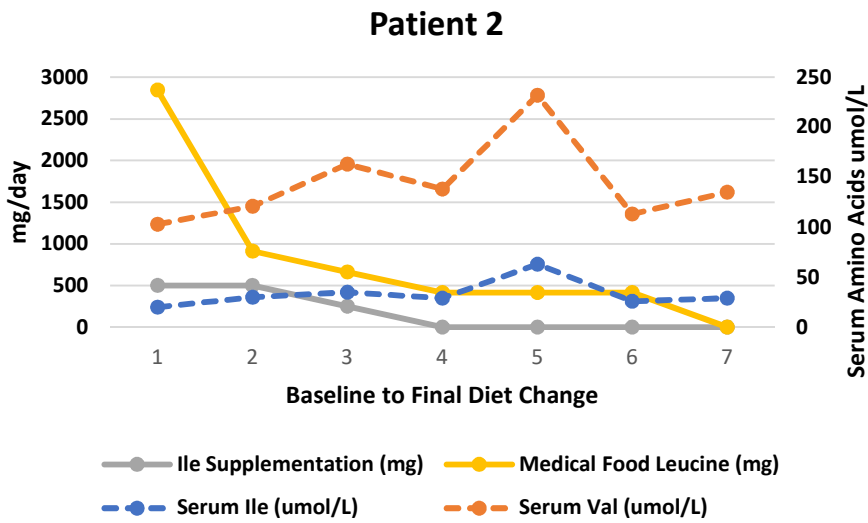
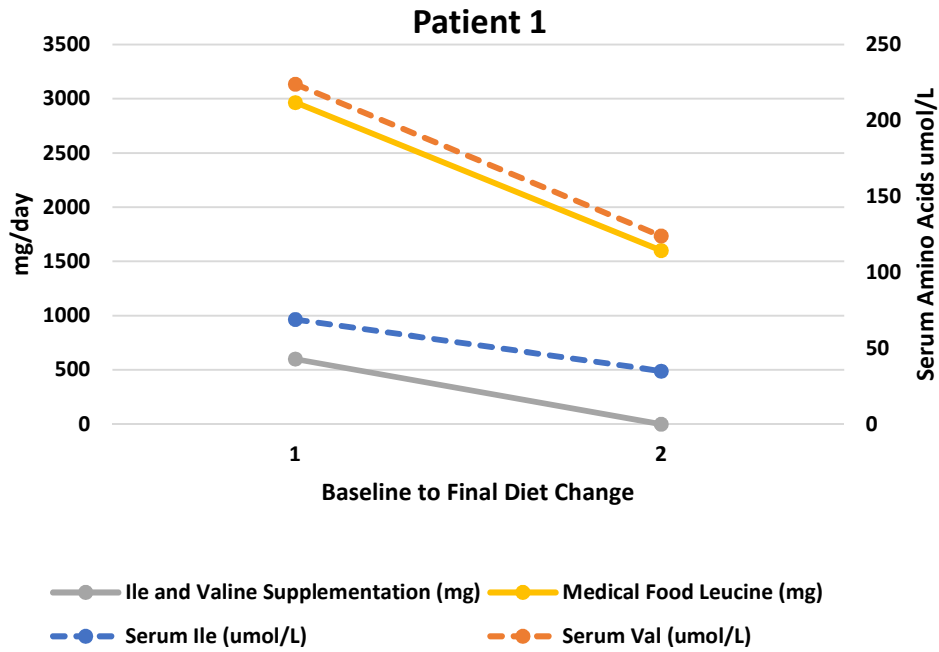
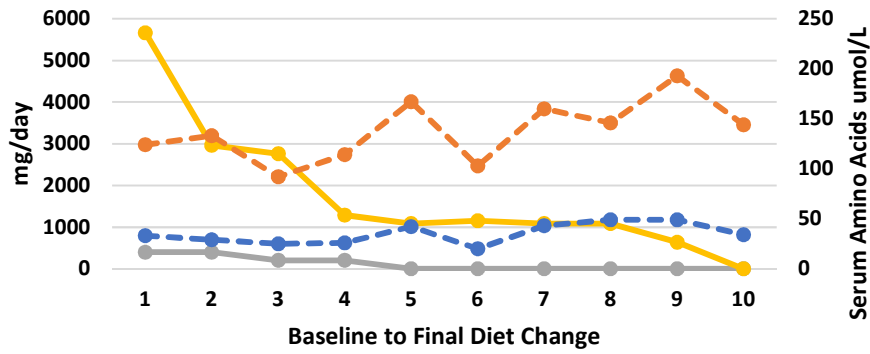


Supplementary Materials:

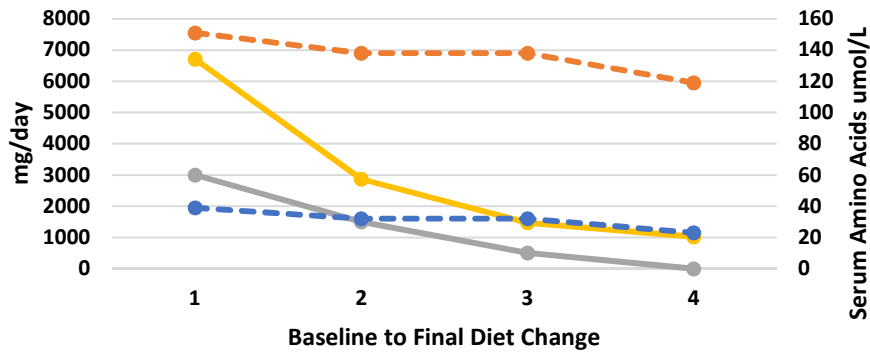


Patient 3



● Ile and Val Supplementation (mg) ● Medical Food Leucine (mg)
● Serum Ile (umol/L) ● Serum Val (umol/L)

Patient 4



● Ile and Val Supplementation (mg) ● Medical Food Leucine (mg)
● Serum Ile (umol/L) ● Serum Val (umol/L)

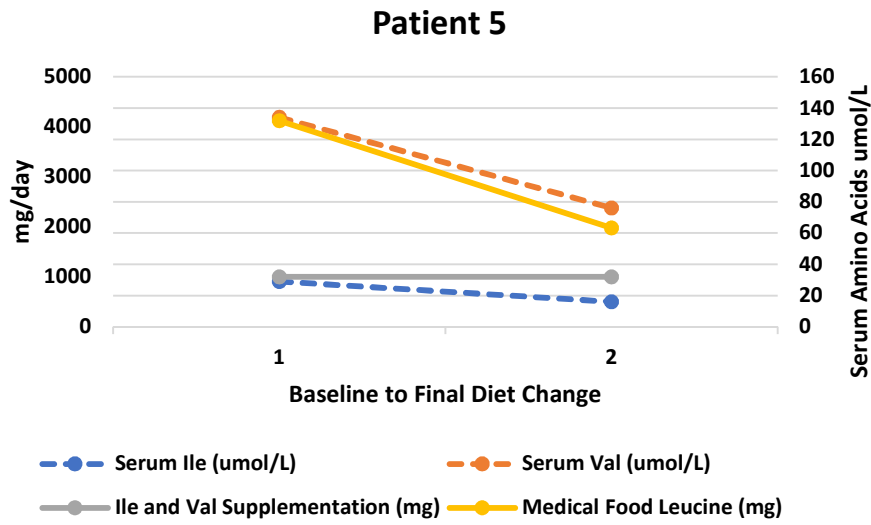


Figure S1. Individual patient results of serum amino acid levels in relation to decreased supplementation of isoleucine and valine while reducing leucine intake from precursor-free medical food.