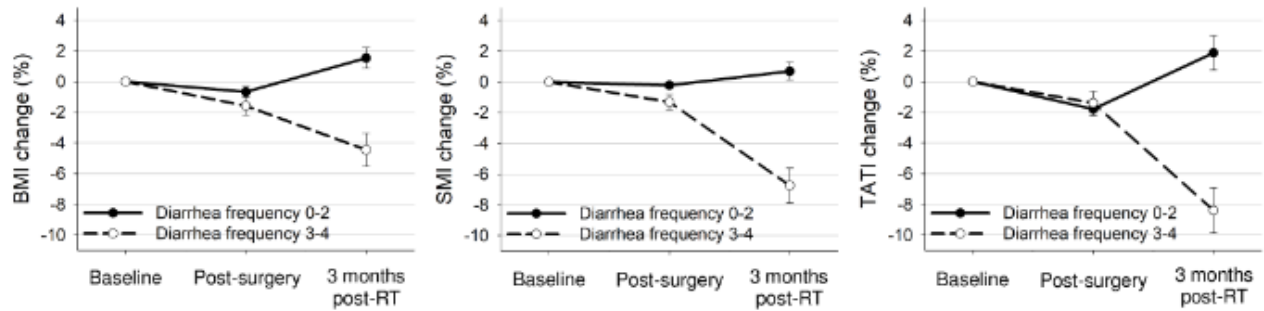
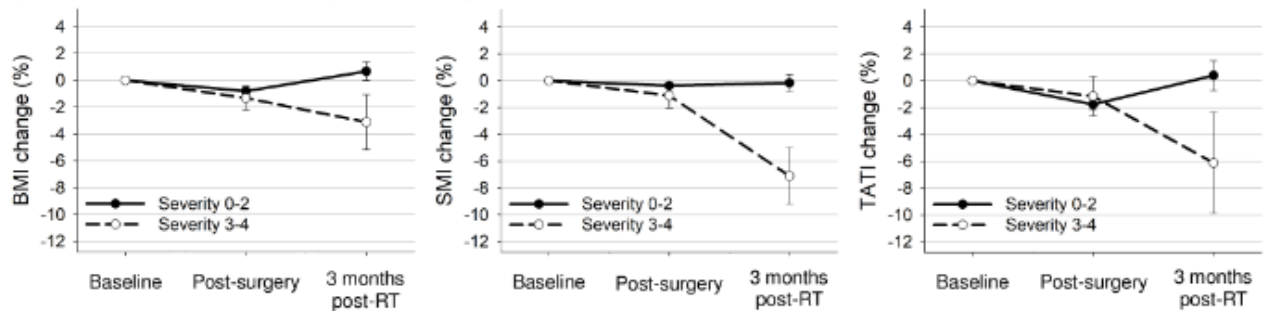


## Supplementary Material

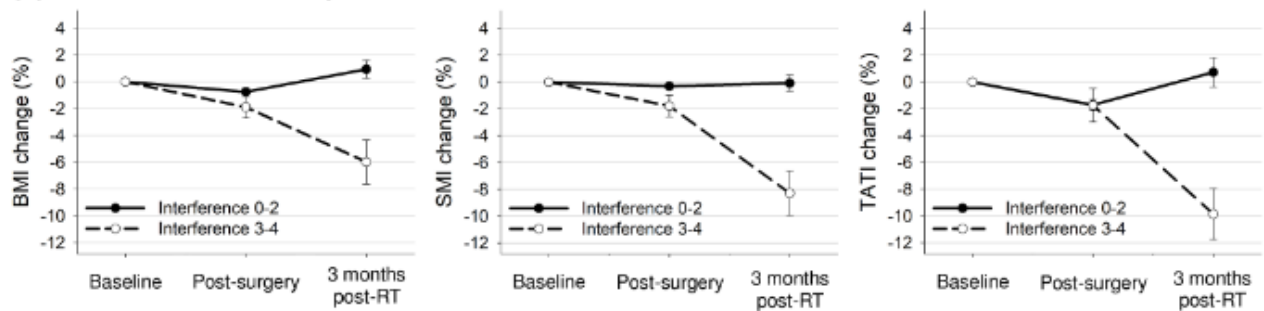
### (A) PRO-CTCAE diarrhea frequency



### (B) PRO-CTCAE abdominal pain severity



### (C) PRO-CTCAE abdominal pain interference



**Figure S1.** Mean changes with 95% confidence interval bars in BMI, SMI, and TATI from baseline to 3 months after treatment completion according to PRO-CTCAE (A) diarrhea frequency, (B) abdominal pain severity, and (C) abdominal pain interference. BMI, body mass index; PRO-CTCAE, patient-reported outcome version of the Common Terminology Criteria for Adverse Events; RT, radiotherapy; SMI, skeletal muscle index; TATI, total adipose tissue index.

**Table S1** Univariable logistic regression analysis of factors associated with body composition changes.

| Variable                                      | Weight loss ≥5%      |         | Muscle loss ≥5%      |         | Adipose tissue loss ≥5% |         |
|---|----------------------|---------|----------------------|---------|-------------------------|---------|
|   | OR (95% CI)          | p-value | OR (95% CI)          | p-value | OR (95% CI)             | p-value |
| <b>Age</b>                                    | 1.03 (0.99-1.07)     | 0.18    | 1.01 (0.97-1.04)     | 0.75    | 1.03 (0.99-1.06)        | 0.09    |
| <b>Disease site</b>                           |                      |         |                      |         |                         |         |
| Endometrium                                   | Reference            |         | Reference            |         | Reference               |         |
| Cervix  | 2.08 (0.97-4.47)     | 0.06    | 1.51 (0.74-3.08)     | 0.25    | 1.58 (0.86-2.91)        | 0.14    |
| <b>Surgery type</b>                           |                      |         |                      |         |                         |         |
| Open  | Reference            |         | Reference            |         | Reference               |         |
| Minimally invasive                            | 0.46 (0.15-1.39)     | 0.17    | 0.87 (0.37-2.04)     | 0.75    | 0.83 (0.40-1.70)        | 0.60    |
| <b>Chemotherapy</b>                           |                      |         |                      |         |                         |         |
| No  | Reference            |         | Reference            |         | Reference               |         |
| Yes   | 1.33 (0.60-2.92)     | 0.48    | 1.29 (0.64-2.58)     | 0.47    | 0.96 (0.53-1.75)        | 0.90    |
| <b>NLR</b>                                    |                      |         |                      |         |                         |         |
| ≤3  | Reference            |         | Reference            |         | Reference               |         |
| >3  | 3.63 (1.66-7.94)     | 0.001   | 3.40 (1.67-6.94)     | 0.001   | 2.58 (1.41-4.71)        | 0.002   |
| <b>PG-SGA score at the beginning of RT</b>    |                      |         |                      |         |                         |         |
| 0-3   | Reference            |         | Reference            |         | Reference               |         |
| ≥4  | 0.87 (0.28-2.71)     | 0.81    | 1.77 (0.72-4.36)     | 0.21    | 1.18 (0.51-2.69)        | 0.70    |
| <b>PG-SGA score at the end of RT</b>          |                      |         |                      |         |                         |         |
| 0-3   | Reference            |         | Reference            |         | Reference               |         |
| ≥4  | 91.62 (12.16-690.55) | <0.001  | 140.2 (18.63-1054.8) | <0.001  | 11.05 (5.59-21.83)      | <0.001  |
| <b>Any PRO-CTCAE score</b>                    |                      |         |                      |         |                         |         |
| 0-2   | Reference            |         | Reference            |         | Reference               |         |
| ≥3  | 6.34 (2.85-14.13)    | <0.001  | 17.50 (7.704-39.80)  | <0.001  | 9.87 (4.74-20.53)       | <0.001  |
| <b>PRO-CTCAE, diarrhea frequency</b>          |                      |         |                      |         |                         |         |
| 0-2   | Reference            |         | Reference            |         | Reference               |         |
| ≥3  | 7.87 (3.48-17.80)    | <0.001  | 16.71 (7.36-37.97)   | <0.001  | 11.38 (5.21-24.87)      | <0.001  |
| <b>PRO-CTCAE, abdominal pain severity</b>     |                      |         |                      |         |                         |         |
| 0-2   | Reference            |         | Reference            |         | Reference               |         |
| ≥3  | 2.70 (0.95-7.66)     | 0.06    | 8.68 (3.26-23.13)    | <0.001  | 3.78 (1.46-9.75)        | 0.006   |
| <b>PRO-CTCAE, abdominal pain interference</b> |                      |         |                      |         |                         |         |
| 0-2   | Reference            |         | Reference            |         | Reference               |         |
| ≥3  | 8.54 (3.13-23.30)    | <0.001  | 24.90 (7.65-81.06)   | <0.001  | 15.04 (4.20-53.80)      | <0.001  |
| <b>Physician-reported CTCAE grade</b>         |                      |         |                      |         |                         |         |
| 0-2   | Reference            |         | Reference            |         | Reference               |         |
| ≥3  | 1.98 (0.60-6.56)     | 0.26    | 1.46 (0.45-4.80)     | 0.53    | 0.99 (0.33-2.98)        | 0.98    |
| <b>Bowel V45<sup>a</sup> (per 1 mL)</b>       | 1.015 (1.008-1.023)  | <0.001  | 1.029 (1.018-1.039)  | <0.001  | 1.013 (1.007-1.019)     | <0.001  |

RT, radiotherapy

a V45 = volume (mL) of bowel bag receiving 45 Gy or more.