

Table S1. Impact of serum sodium and relevant outcomes after excluding patients with serum sodium levels >145 mmol/L (n = 21).

Death	Ref	
Normal sodium (≥ 136 and ≤ 145 mmol/L)	1.02 (0.47–2.19)	$p = 0.97$
Sodium <136 mmol/L		
Decline of renal function, graft loss or death	log rank test	$p = 0.96$
Normal sodium (≥ 136 and ≤ 145 mmol/L)		
Sodium <136 mmol/L		
Graft loss or death	Ref	
Normal sodium (≥ 136 and ≤ 145 mmol/L)	1.13 (0.63–2.04)	$p = 0.68$
Sodium <136 mmol/L		

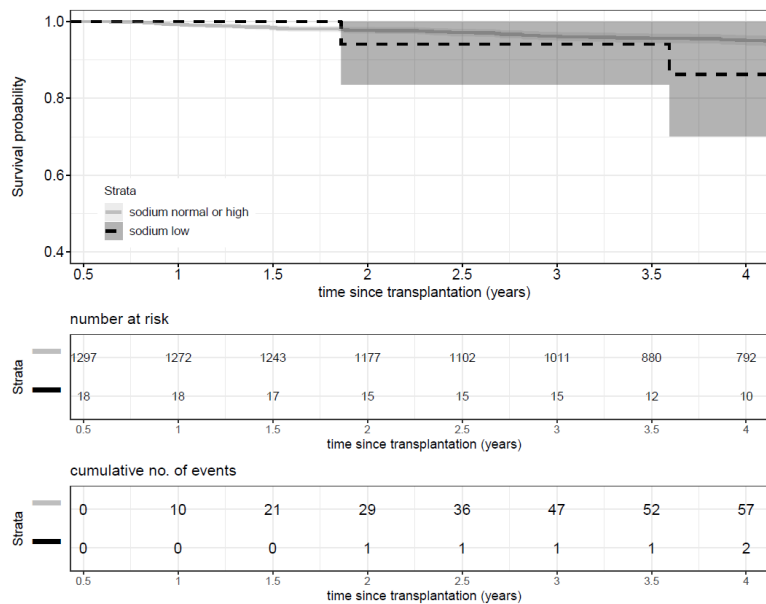


Figure S1. Kaplan Meier curve of outcome of death by sodium level (<132 mmol/L or ≥ 132 mmol/L).