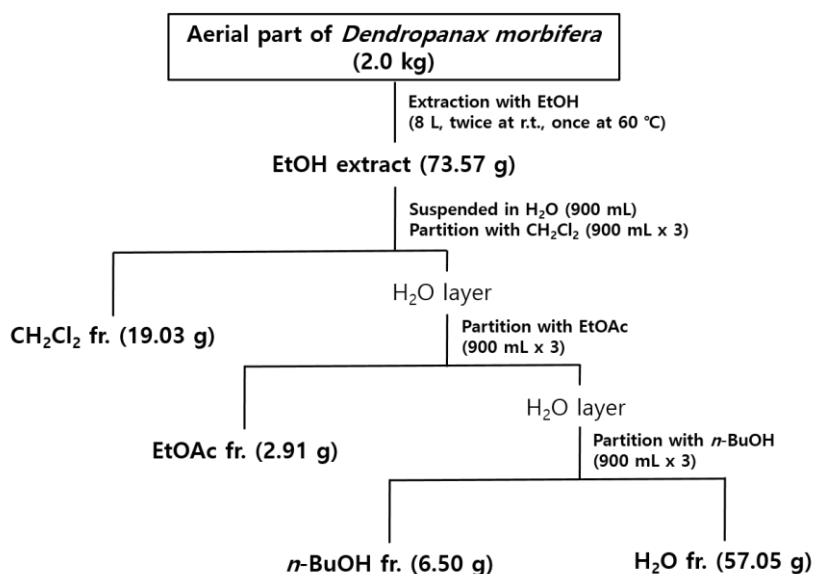
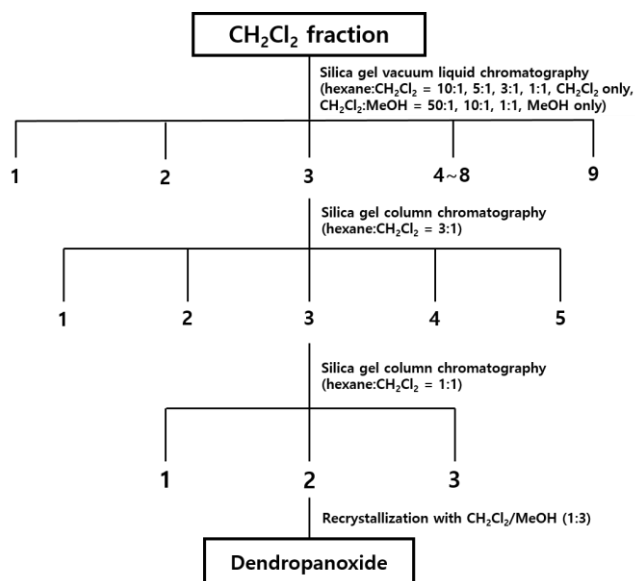


## Supplementary Materials

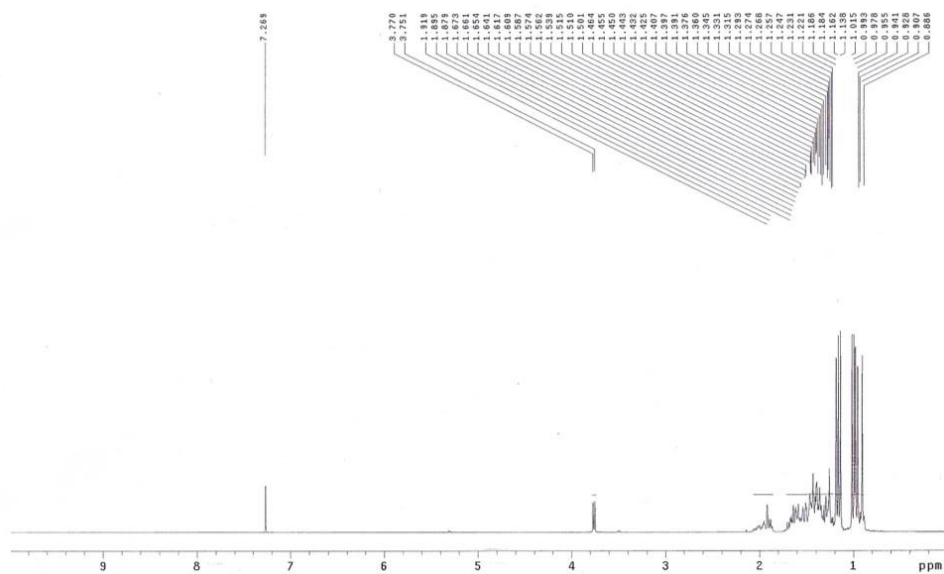
A



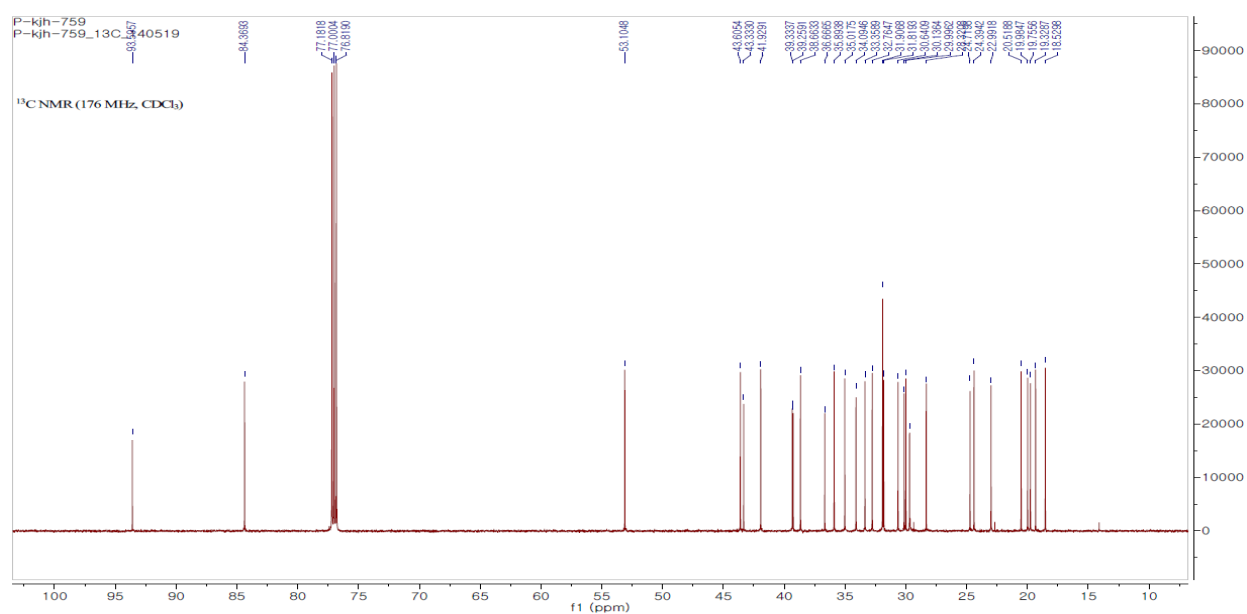
B



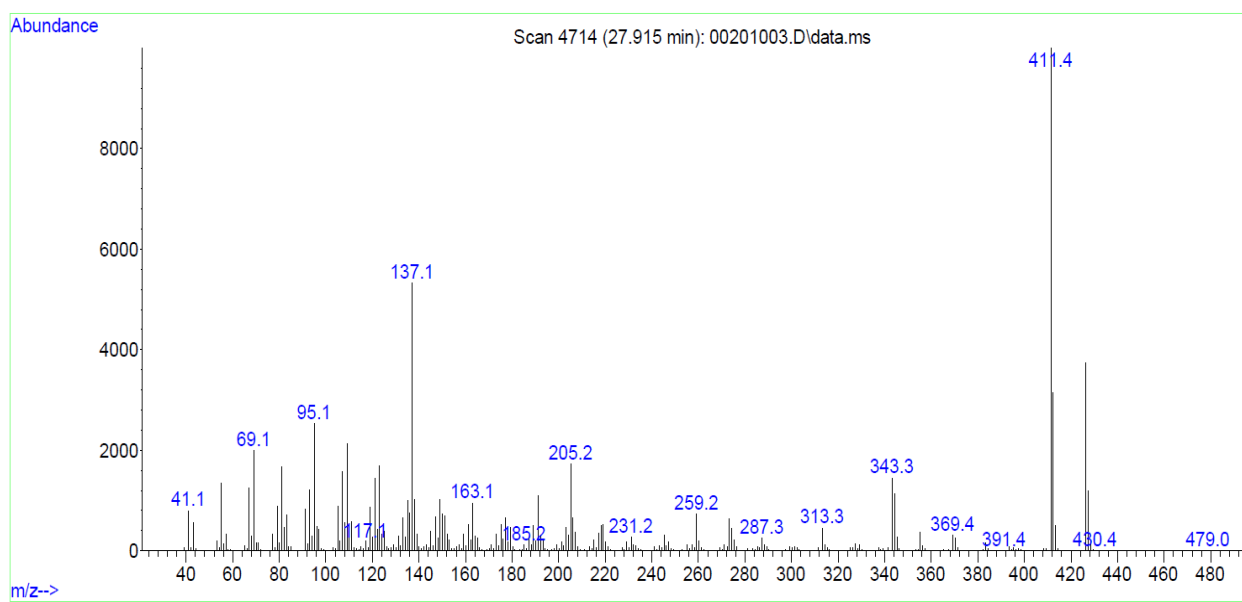
**Figure S1.** Extraction and isolation scheme for dendropanoxide from the aerial parts of *Dendropanax morbifera*. (A) Extraction and partition scheme for the aerial parts of *D. morbifera*. (B) Scheme for the isolation of dendropanoxide from the dichloromethane fraction.



**Figure S2.**  $^1\text{H}$  NMR spectrum of dendropanoxide ( $\text{CDCl}_3$ , 500 MHz).



**Figure S3.**  $^{13}\text{C}$  NMR spectrum of dendropanoxide ( $\text{CDCl}_3$ , 125 MHz).



**Figure S4.** GC/EIMS spectrum of dendropanoxide.