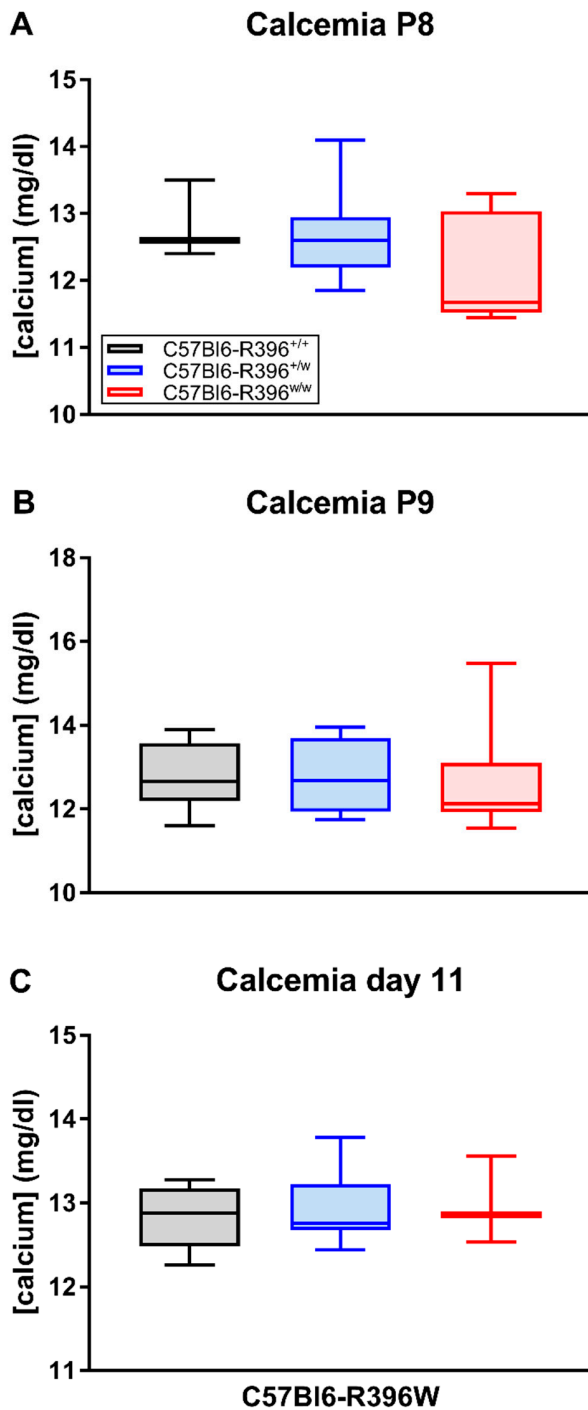
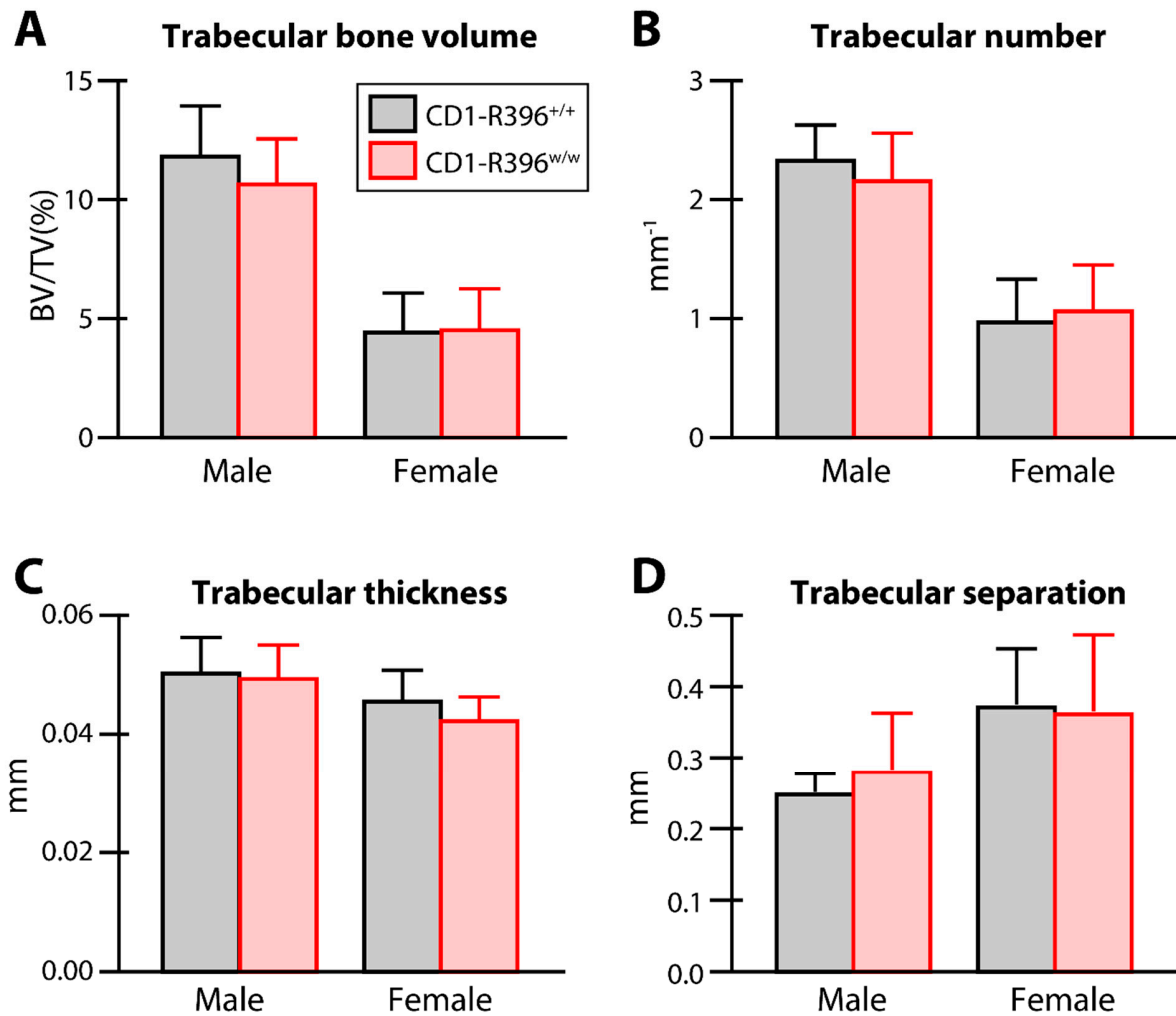


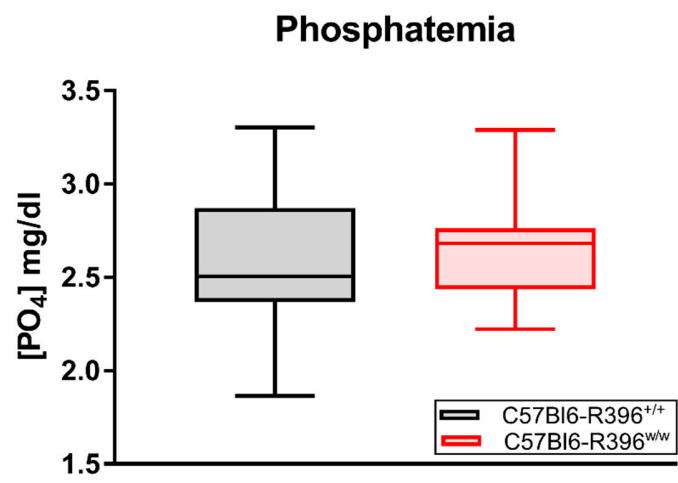
SUPPLEMENTARY FIGURES



Supplementary Figure S1. Serum calcium levels in C57Bl6-R396W littermates. Total serum calcium was measured using an automated analyzer. A, postnatal day 8; B, postnatal day 9; C, postnatal day 11. No statistical differences by one-way ANOVA.



Supplementary Figure S2. Steady-state trabecular parameters in CD1-R396W knock-in strain. Tibiae from mutant and wild-type littermates of both sexes were analyzed by μ CT at 3 months of age.



Supplementary Figure S3. Serum phosphate levels in surviving wild-type and mutant C57Bl6-R396W mice at 3 months of age.