

# Structural Characterization of *Pleurotus sajor-caju* polysaccharides and its neuroprotection related to inhibition on oxidative stress

Mengdi Liu <sup>1,2,†</sup>, Yingdi Dai <sup>1,2,†</sup>, Chengming Song <sup>2</sup>, Jia Wang <sup>3</sup>, Yang Liu <sup>1,2\*</sup> and Qi Wang <sup>1,2\*</sup>

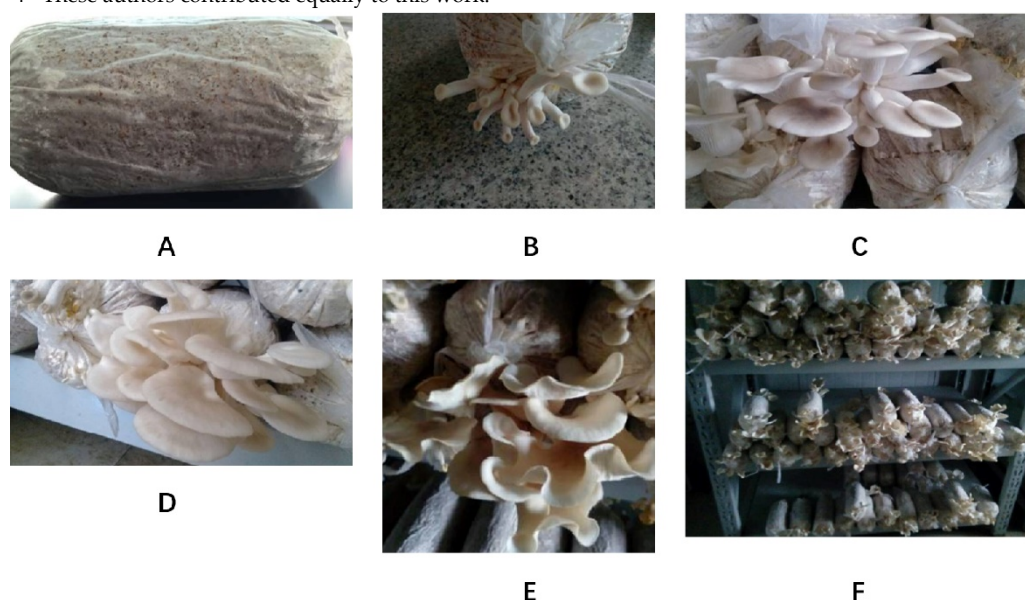
<sup>1</sup> Engineering Research Center of Chinese Ministry of Education for Edible and Medicinal Fungi, Jilin Agricultural University, Changchun 130118, China

<sup>2</sup> College of Plant Protection, Jilin Agricultural University, Changchun 130118, China

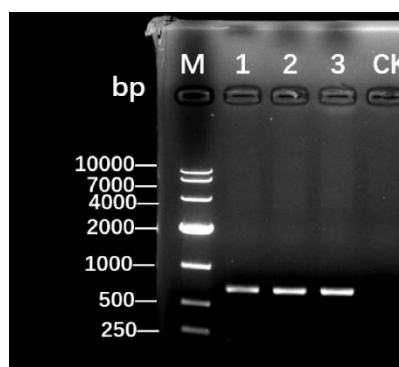
<sup>3</sup> Guang'anmen Hospital China Academy of Chinese Medical Sciences Respiratory Department, Beijing 100053, China

\* Correspondence: y\_liu10@jlau.edu.cn (Y.L.); qiwang@jlau.edu.cn (Q.W.); Tel./Fax: +86-431-84532989(Y.L.); Tel./Fax: +86-431-84533269 (Q.W.)

† These authors contributed equally to this work.



**Figure S1.** Results of PCR for ITS sequences. (A) Primordium formation stage. (B) Mulberry period. (C) Coral period. (D) Growing period. (E) The mature period. (F) Indoor growing environment.



**Figure S2.** Results of PCR for ITS sequences

M: DNA maker, CK: negative control. 1-3 was three parallel experiments of the sample.

Sequence ID: Query\_33249 Length: 694 Number of Matches: 1

Range 1: 1 to 659 [Graphics](#)[▼ Next Match ▲](#)

Score	Expect	Identities	Gaps	Strand
1197 bits(648)	0.0	656/659(99%)	3/659(0%)	Plus/Minus
Query 11	AGT-CTA-CTGATTGAGGTCAA-TTGTCAAATTGTCCTTGGCGACGATTAGAGAGCTGG	67		
Sbjct 659	AGTCCTACCTGATTGAGGTCAAATTGTCAAATTGTCCTTGGCGACGATTAGAGAGCTGG	600		
Query 68	ACTCTATTTCATGCGTGCTATTGATGAGTGATAATTATCACATCATGCCGAGAGGCAATGA	127		
Sbjct 599	ACTCTATTTCATGCGTGCTATTGATGAGTGATAATTATCACATCATGCCGAGAGGCAATGA	540		
Query 128	GAAGTCCTGCTAATGCATTTAAGAGGAGCCGACTTGTACAGCCAGCAACCCCCAACAAAT	187		
Sbjct 539	GAAGTCCTGCTAATGCATTTAAGAGGAGCCGACTTGTACAGCCAGCAACCCCCAACAAAT	480		
Query 188	CCAAACATCACAATAAATGTGAGTTTGAGAAATTAATGACACTCAAACAGGCATGCCCC	247		
Sbjct 479	CCAAACATCACAATAAATGTGAGTTTGAGAAATTAATGACACTCAAACAGGCATGCCCC	420		
Query 248	TCGGAATACCAAGGGGCGCAAGGTGCGTTCAAAGATTTCGATGATTCACTGAATTCTGCAA	307		
Sbjct 419	TCGGAATACCAAGGGGCGCAAGGTGCGTTCAAAGATTTCGATGATTCACTGAATTCTGCAA	360		
Query 308	TTCACATTACTTATCGCATTTGCGTGGCTTCTTCATCGATGCGAGAGCCAAGAGATCCGT	367		
Sbjct 359	TTCACATTACTTATCGCATTTGCGTGGCTTCTTCATCGATGCGAGAGCCAAGAGATCCGT	300		
Query 368	TGTTGAAAGTTGTATTATGGTTTATAGGCACAAGGCCATTAAATGACATTTCGTAGACAT	427		
Sbjct 299	TGTTGAAAGTTGTATTATGGTTTATAGGCACAAGGCCATTAAATGACATTTCGTAGACAT	240		
Query 428	ACATTTGGGGTGTGTTAAGTAAATAGACTGCGTTGTCACACCGAGACGTTTAAATCCCAG	487		
Sbjct 239	ACATTTGGGGTGTGTTAAGTAAATAGACTGCGTTGTCACACCGAGACGTTTAAATCCCAG	180		
Query 488	CAAAACCAAGTCTGACGACTTGAAGGACGACTTCACAGATCTATCAAAAGTTTCACAGGTGG	547		
Sbjct 179	CAAAACCAAGTCTGACGACTTGAAGGACGACTTCACAGATCTATCAAAAGTTTCACAGGTGG	120		
Query 548	TTGAAAGACTAGTGAAGCGTGCACATGCCCTAGAGGCCAGCAACAACCTCCATAGTGAAT	607		
Sbjct 119	TTGAAAGACTAGTGAAGCGTGCACATGCCCTAGAGGCCAGCAACAACCTCCATAGTGAAT	60		
Query 608	TCATTAATGATCCTTCCGCAGGTTACCTACGGAACCTTGTACGACTTTTACTTCCA	666		
Sbjct 59	TCATTAATGATCCTTCCGCAGGTTACCTACGGAACCTTGTACGACTTTTACTTCCA	1		

**Figure S3.** Results of ITS sequence alignment (Compared with *Pleurotus sajor-caju* GenBank: AY540328.1 on NCBI, the similarity was over 99%, and it was identified as *Pleurotus sajor-caju*.)