

Figure S1. Long-term HFD feeding increases body weight and fasting blood glucose of aged mice. Body weight (A) and fasting blood glucose (B) of mice after 10-month ND or HFD feeding. Data are presented as Mean \pm SEM, (n=10-11) for each group. * $p < 0.05$; *** $p < 0.001$ vs. ND group.

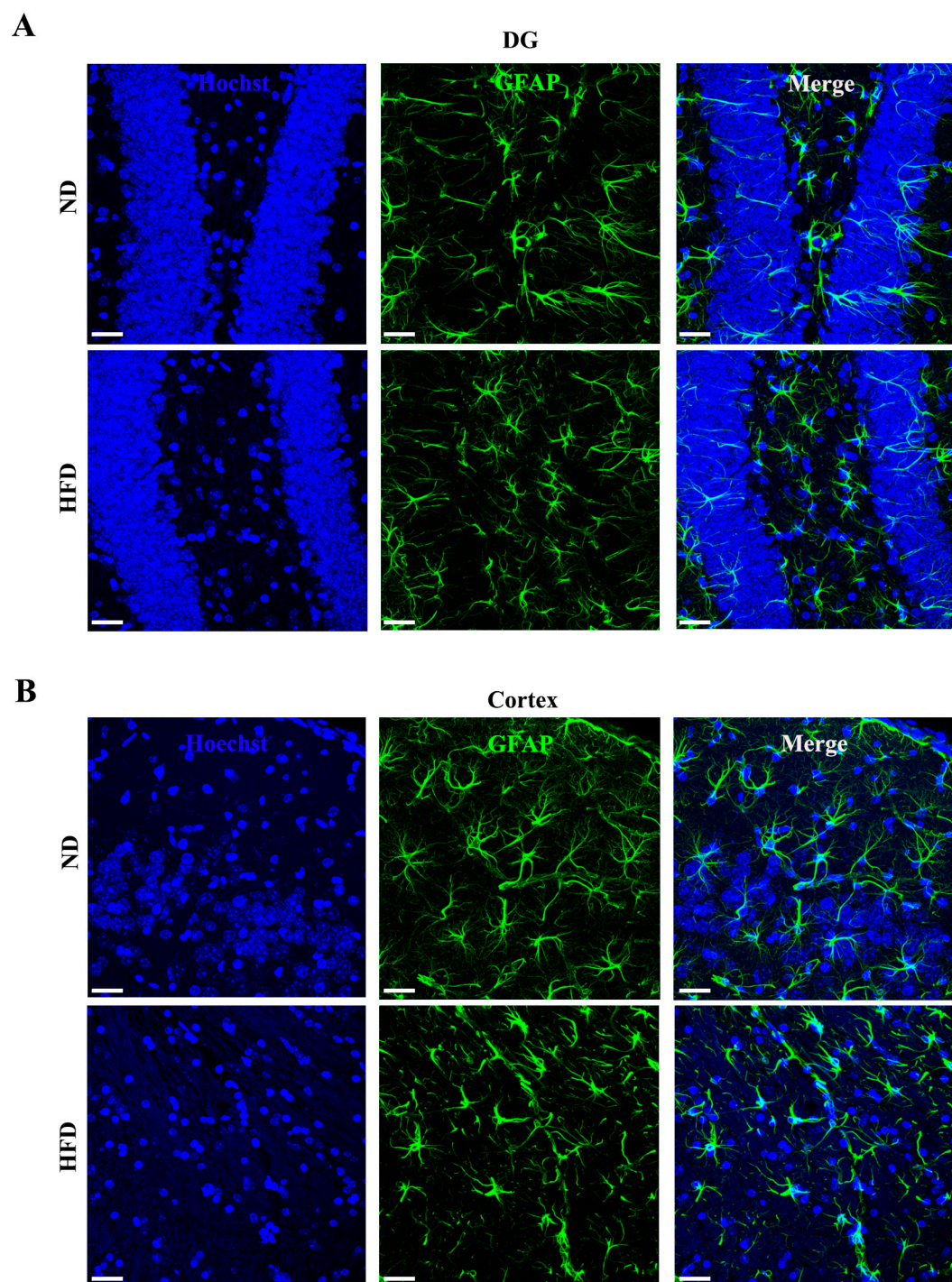


Figure S2. Long-term HFD feeding does not activated astrogliosis in aged mice. (A and B) The representative images of astrocyte in DG and Cortex area. (scale bar = 30 μ m).