

Supplementary file

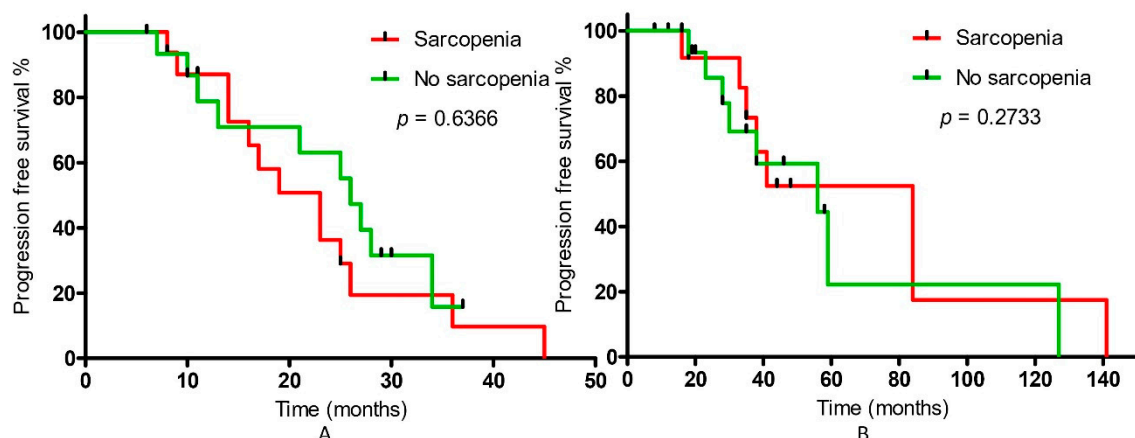


Figure S1 Progression-free survival distribution for patients A. undergoing ADT therapy with docetaxel due to newly diagnosed, hormone-sensitive, metastatic prostate cancer B. with castration-resistant metastatic prostate cancer, continuing ADT therapy in combination with enzalutamide or abiraterone acetate in relation to sarcopenia from 1st computed tomography

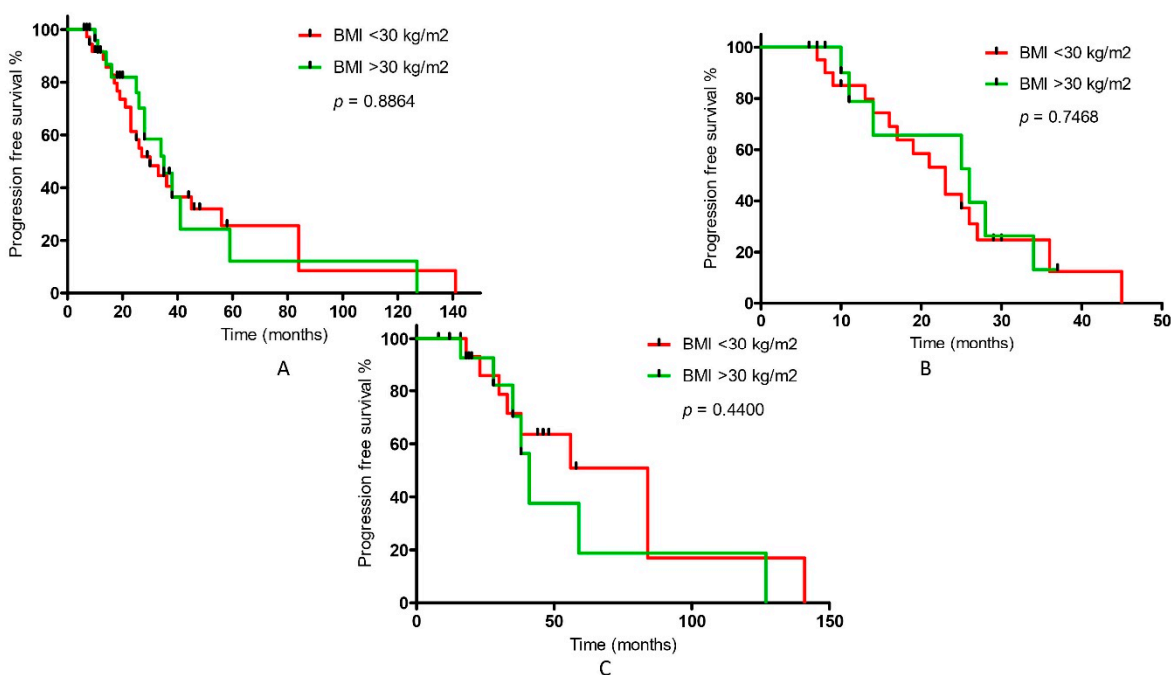


Figure S2 The distribution of progression-free survival for A. all patients with prostate cancer B. for patients undergoing ADT therapy with docetaxel due to newly diagnosed, hormone-sensitive, metastatic prostate cancer C. with castration-resistant metastatic prostate cancer, continuing ADT therapy in combination with enzalutamide or abiraterone acetate in relation to changes in the BMI index

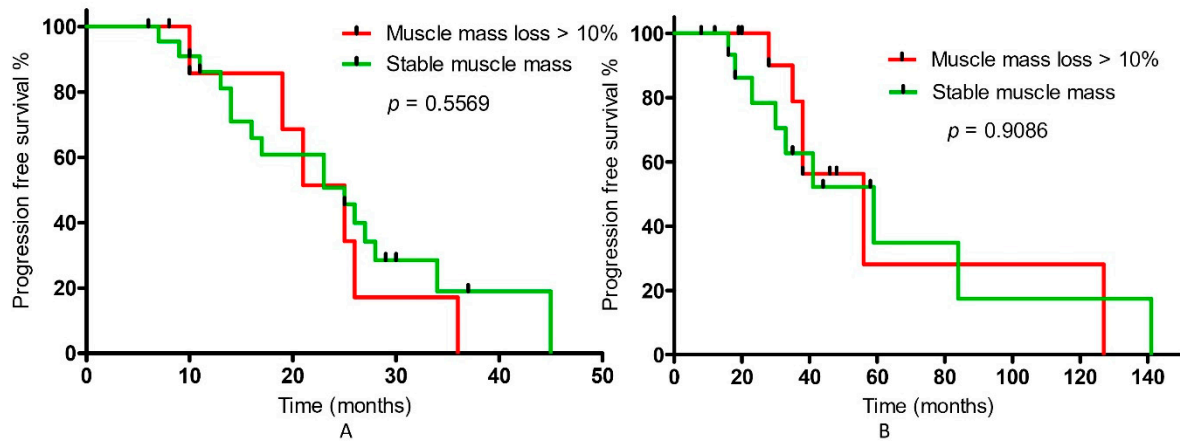


Figure S3 Progression-free survival distribution for patients A. undergoing ADT therapy with docetaxel due to newly diagnosed, hormone-sensitive, metastatic prostate cancer B. with castration-resistant metastatic prostate cancer, continuing ADT therapy in combination with enzalutamide or abiraterone acetate in relation to muscle mass changes.

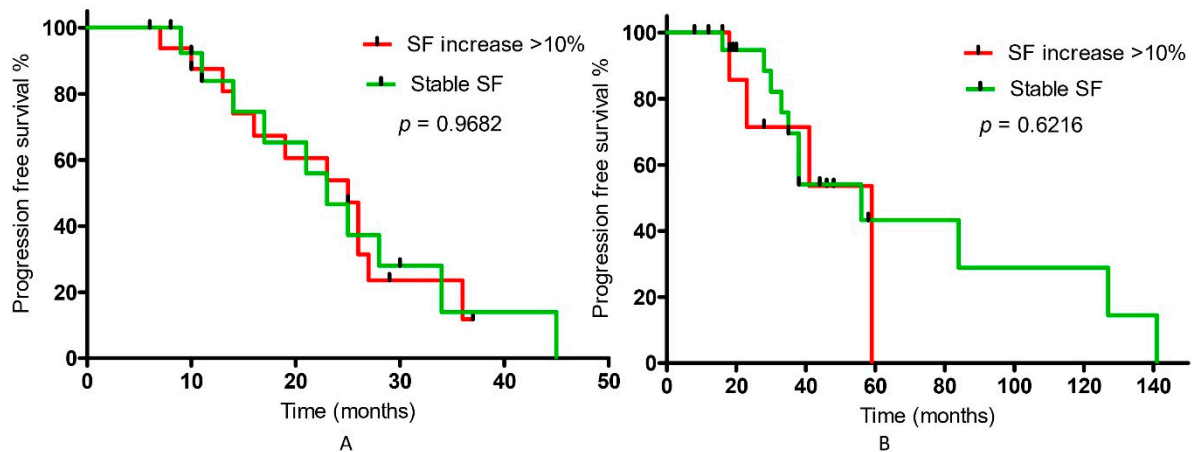


Figure S4 Progression-free survival distribution for patients A. undergoing ADT therapy with docetaxel due to newly diagnosed, hormone-sensitive, metastatic prostate cancer B. with castration-resistant metastatic prostate cancer, continuing ADT therapy in combination with enzalutamide or abiraterone acetate in relation to SF changes

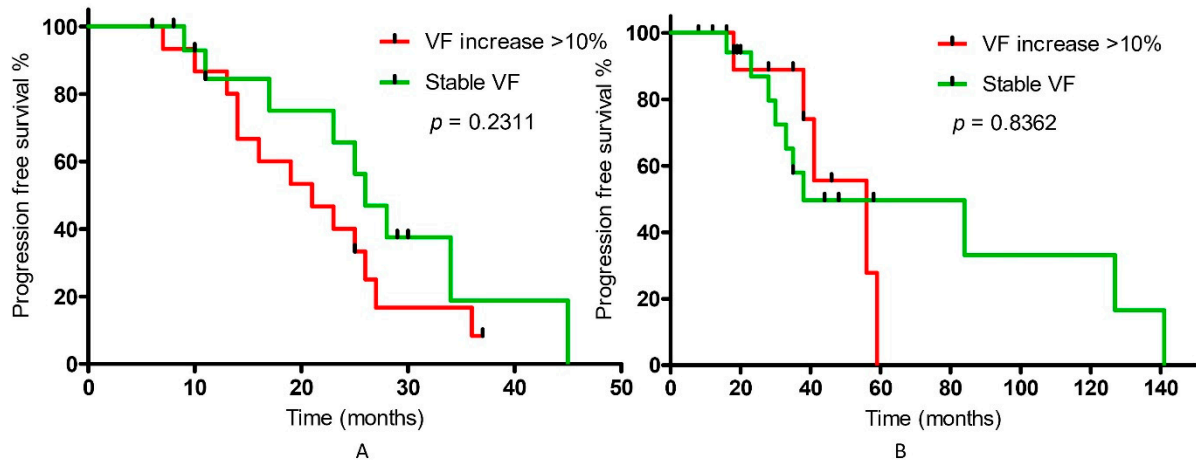


Figure S5 Progression-free survival distribution for patients A. undergoing ADT therapy with docetaxel due to newly diagnosed, hormone-sensitive, metastatic prostate cancer B. with castration-resistant metastatic prostate cancer, continuing ADT therapy in combination with enzalutamide or abiraterone acetate in relation to VF changes.

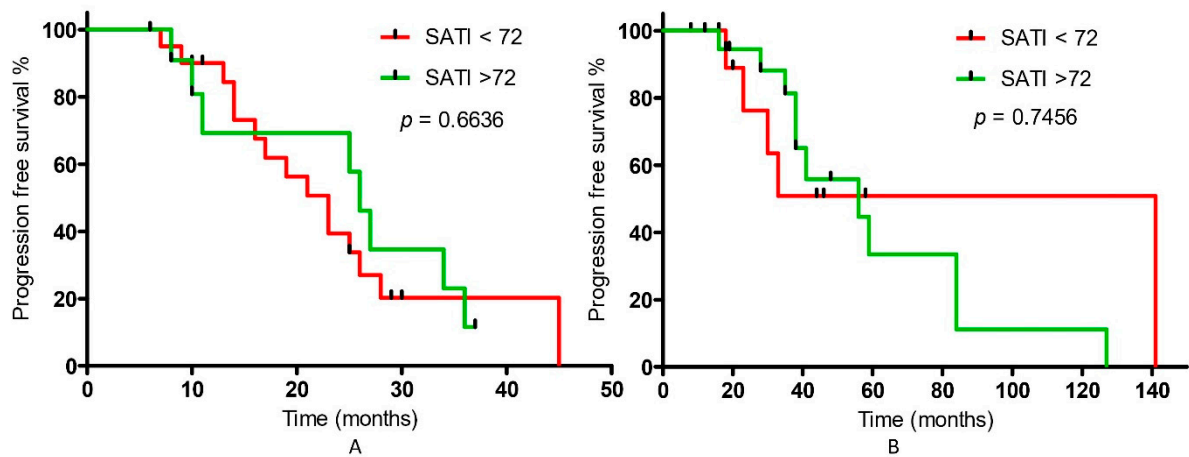


Figure S6 Progression-free survival distribution for patients A. undergoing ADT therapy with docetaxel due to newly diagnosed, hormone-sensitive, metastatic prostate cancer B. with castration-resistant metastatic prostate cancer, continuing ADT therapy in combination with enzalutamide or abiraterone acetate in relation to SATI changes.

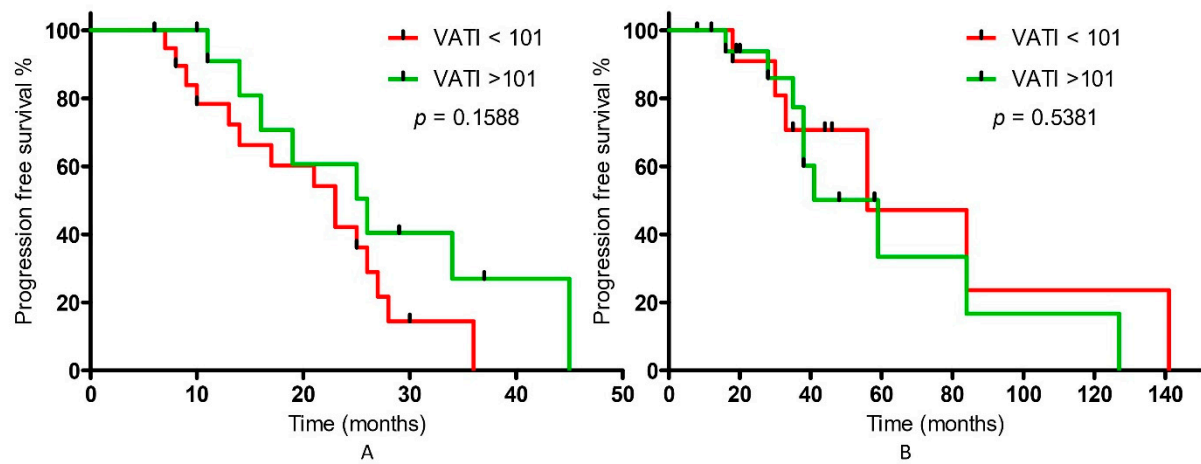


Figure S7 Progression-free survival distribution for patients A. undergoing ADT therapy with docetaxel due to newly diagnosed, hormone-sensitive, metastatic prostate cancer B. with castration-resistant metastatic prostate cancer, continuing ADT therapy in combination with enzalutamide or abiraterone acetate in relation to VATI changes.