

Supplementary material

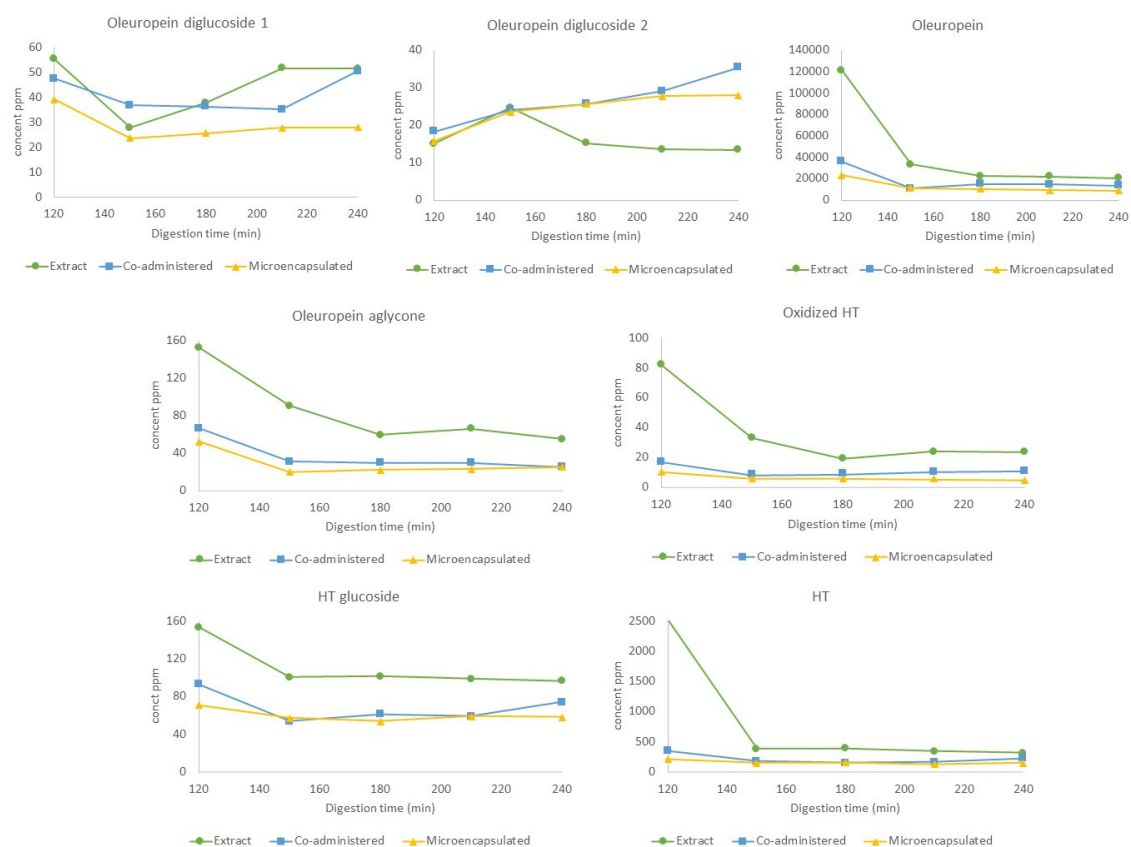


Figure S1. Evolution on the residual fraction of oleuropein diglucoside isomers, oleuropein, oleuropein aglycone, hydroxytyrosol and its oxidized and glucoside forms under gastric (120 min) and intestinal (150, 180, 210 and 240 min) stages of *in vitro* gastrointestinal digestion.

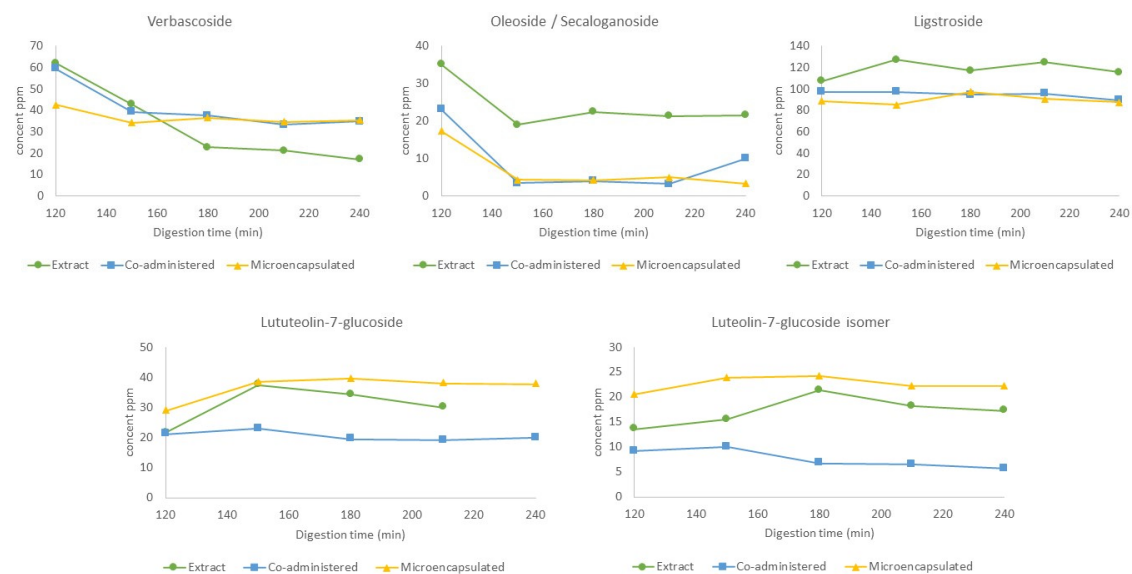


Figure S2. Evolution on the residual fraction of verbascoside, oleoside/secologanoside, ligstroside and luteolin-7-glucoside and its isomer under gastric (120 min) and intestinal (150, 180, 210 and 240 min) stages of *in vitro* gastrointestinal digestion.