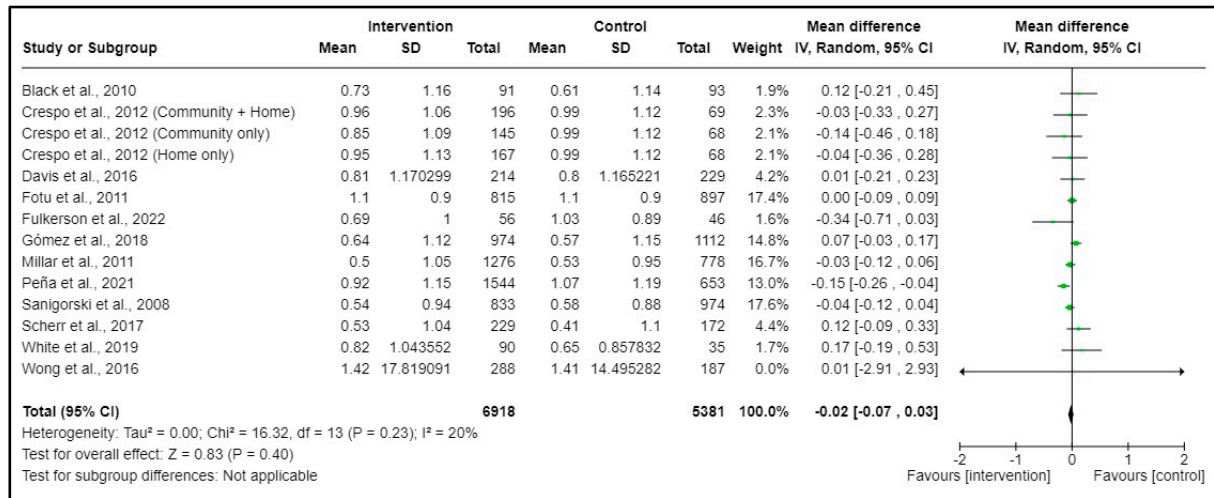


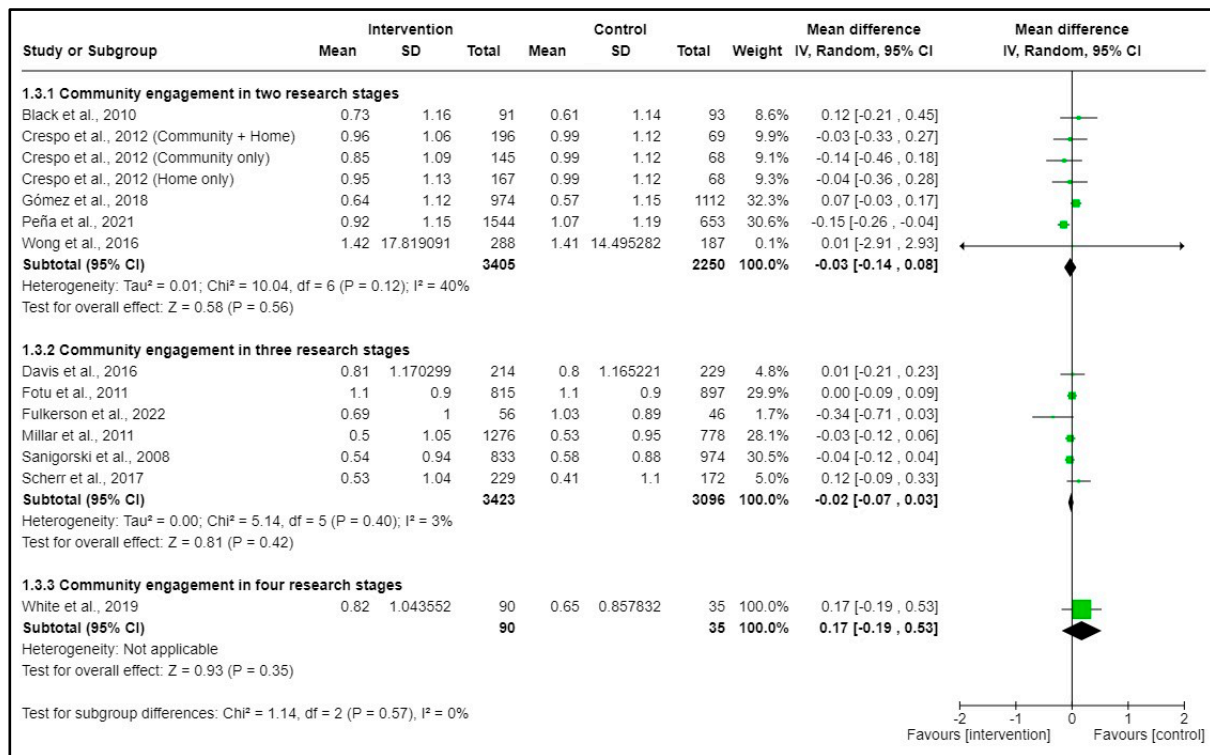
## Supplementary File S2: Figures S1-S16

**Figure S1.** Forest plot of BMI-z scores at post-intervention in 12 included studies

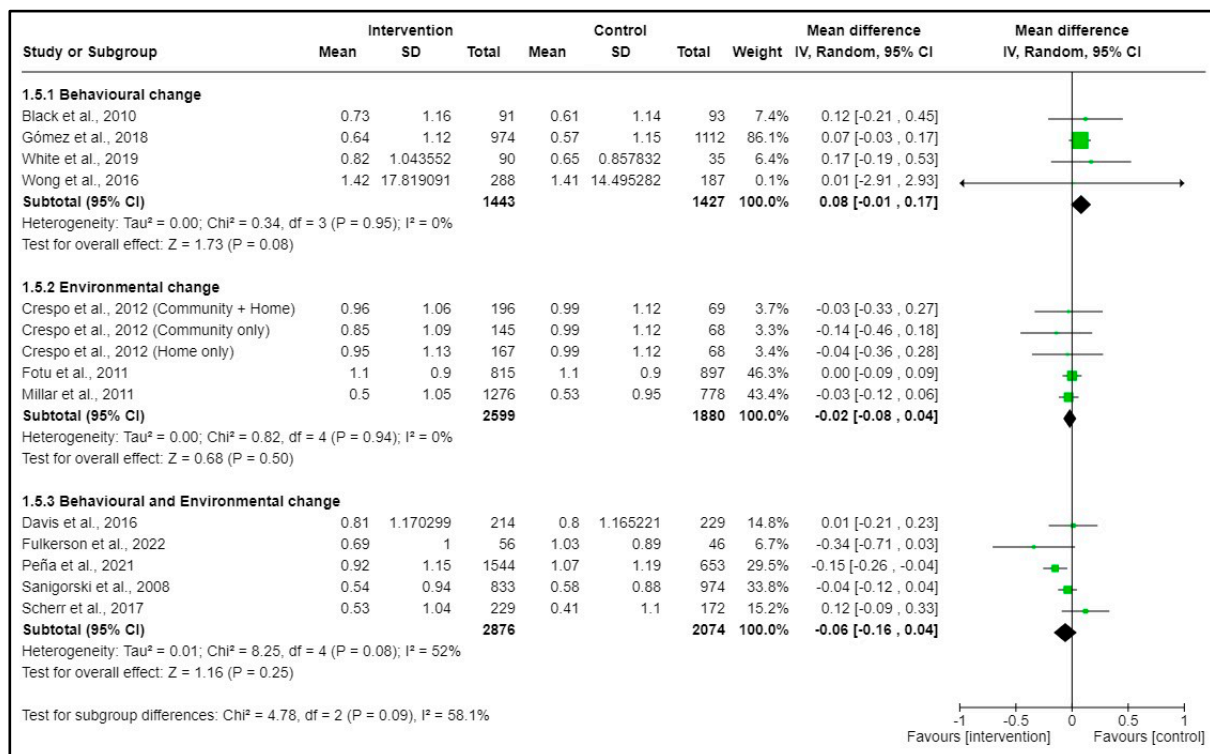


**Figure S2.** Forest plots of subgroup analyses on BMI-z at post-intervention according to a) number of community engagement research stages, and b) type of intervention

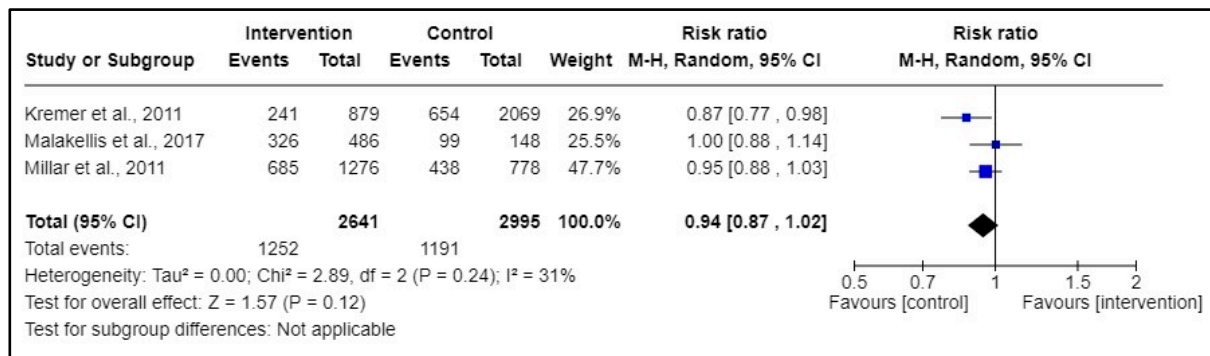
a)



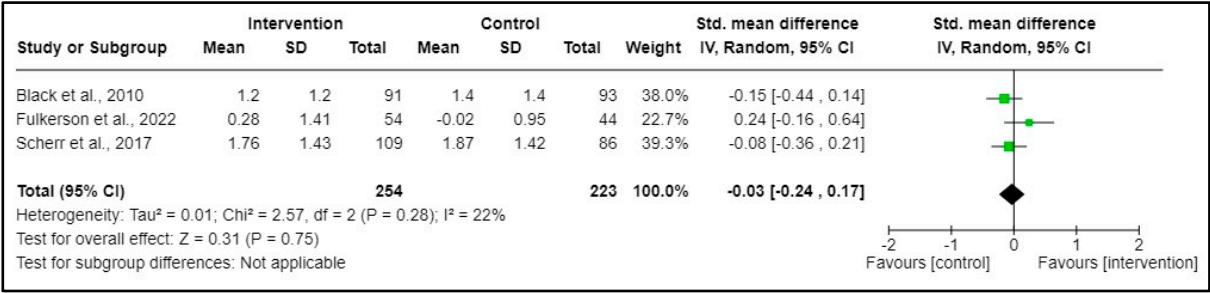
b)



**Figure S3.** Forest plot of fruit intake (dichotomous data) at post-intervention in three included studies

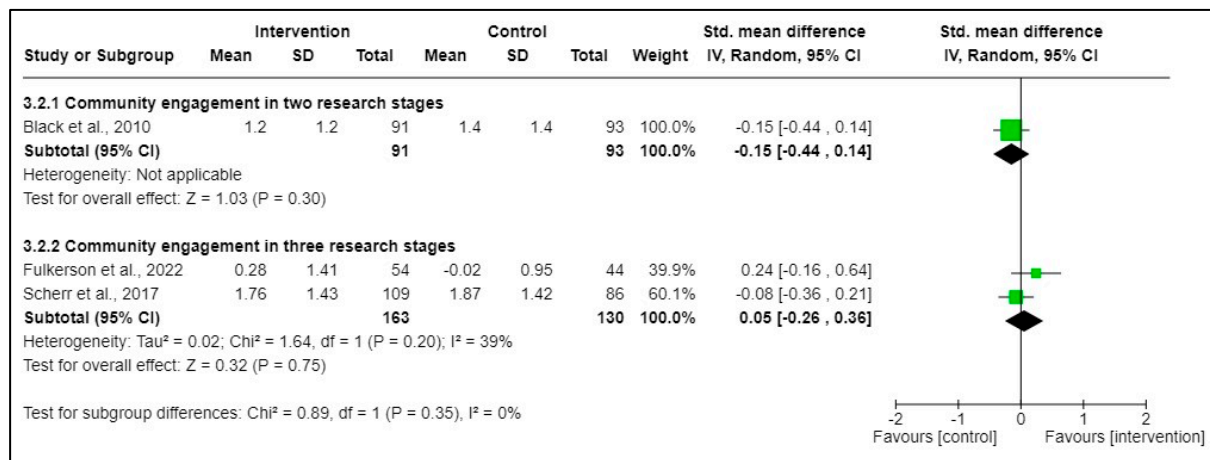


**Figure S4.** Forest plot of fruit intake (continuous data) at post-intervention in three included studies

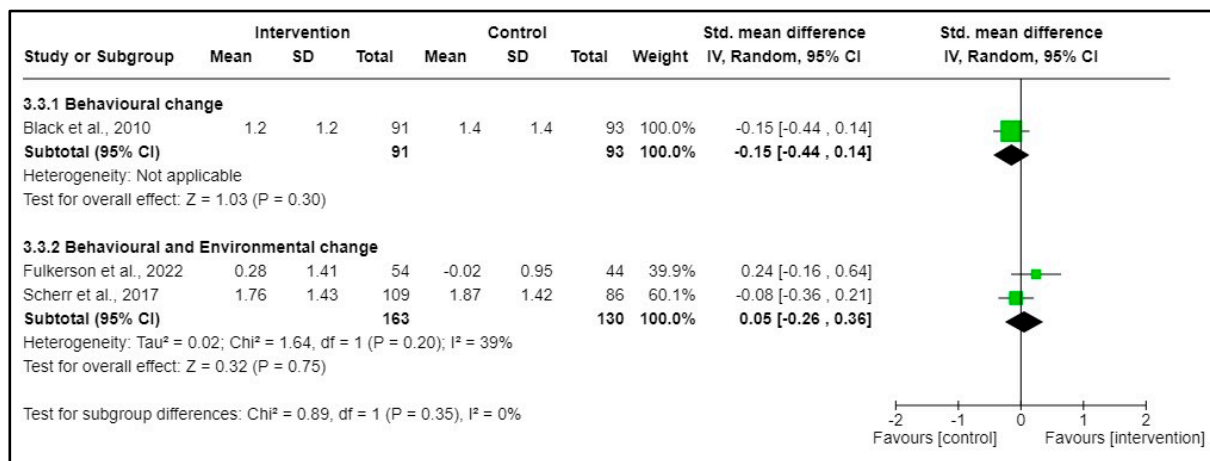


**Figure S5.** Forest plot of fruit intake (continuous data) at post-intervention according to a) number of community engagement research stages, and b) type of intervention

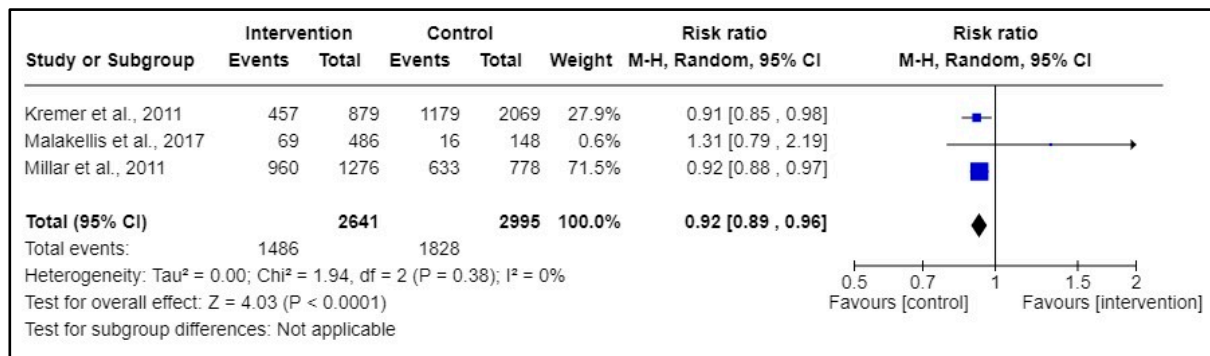
a)



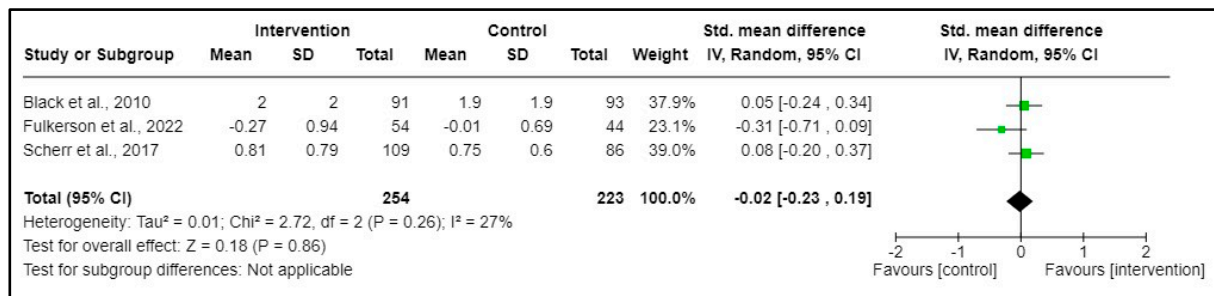
b)



**Figure S6.** Forest plot of vegetable intake (dichotomous data) at post-intervention in three included studies

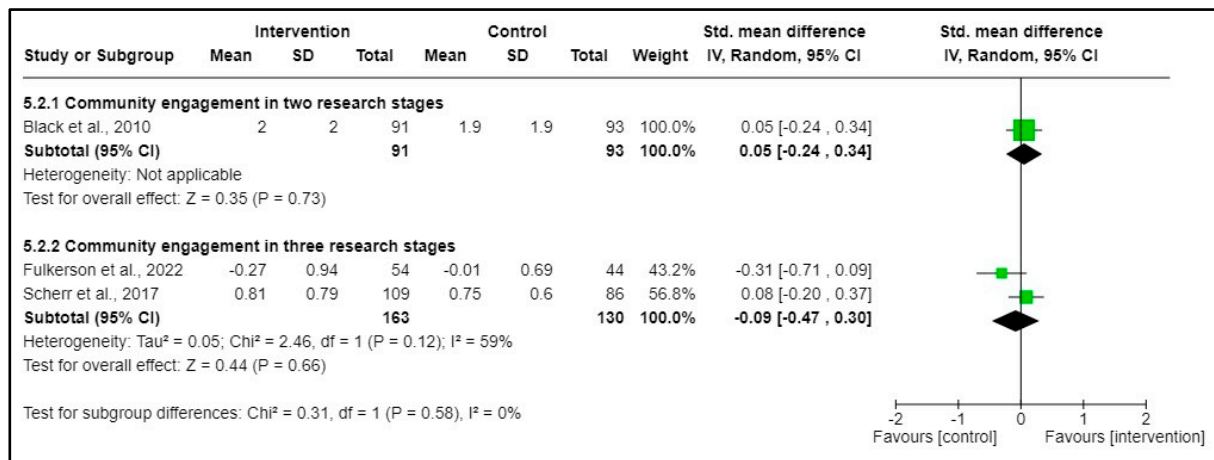


**Figure S7.** Forest plot of vegetable intake (continuous data) at post-intervention in three included studies

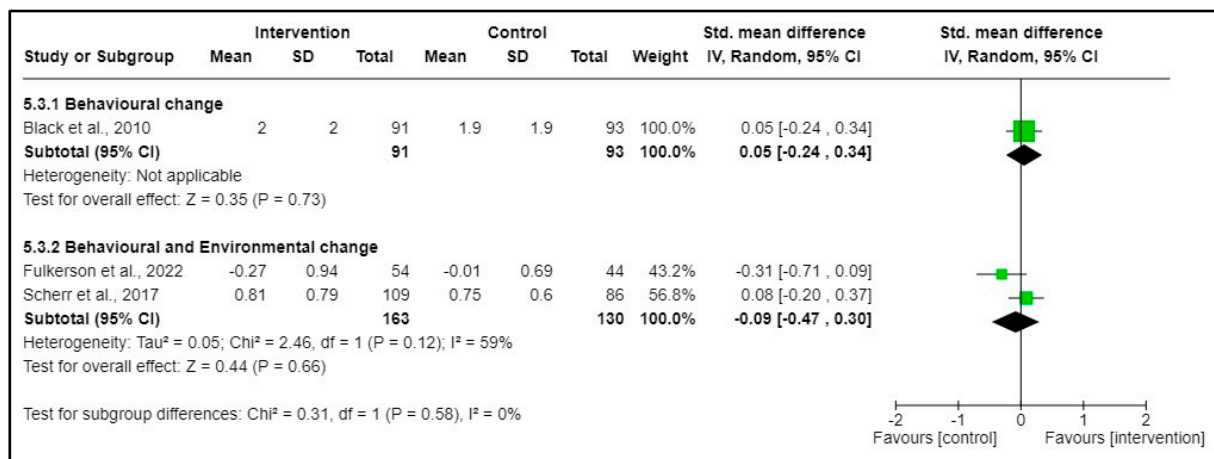


**Figure S8.** Forest plot of vegetable intake (continuous data) at post-intervention according to a) number of community engagement research stages, and b) type of intervention

a)

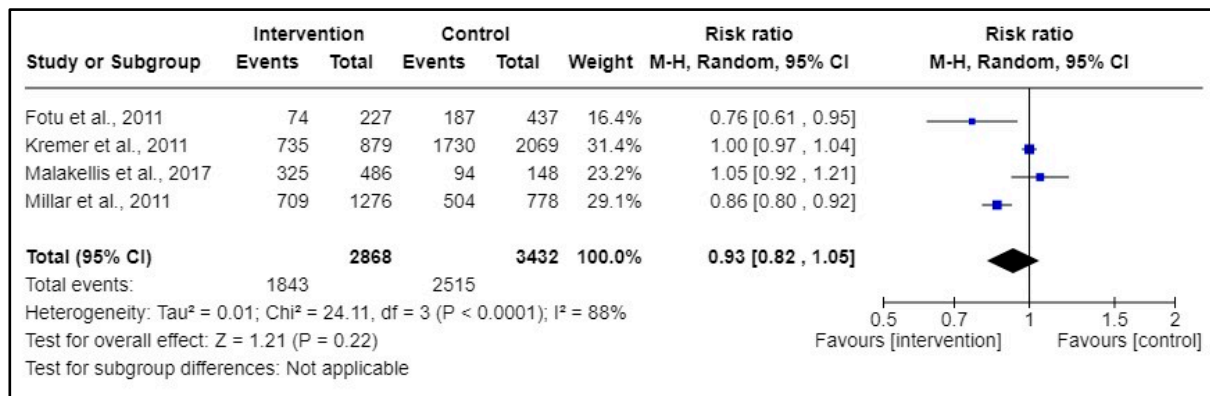


b)

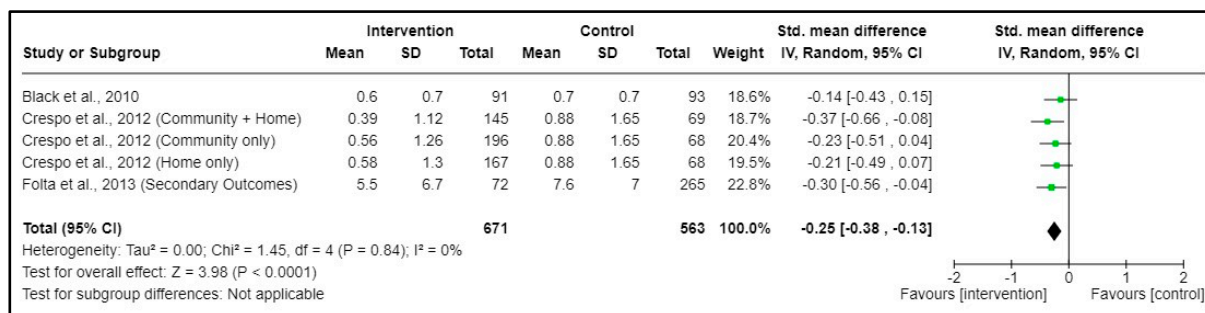




**Figure S9.** Forest plot of sugar-sweetened beverage intake (dichotomous data) at post-intervention in four included studies

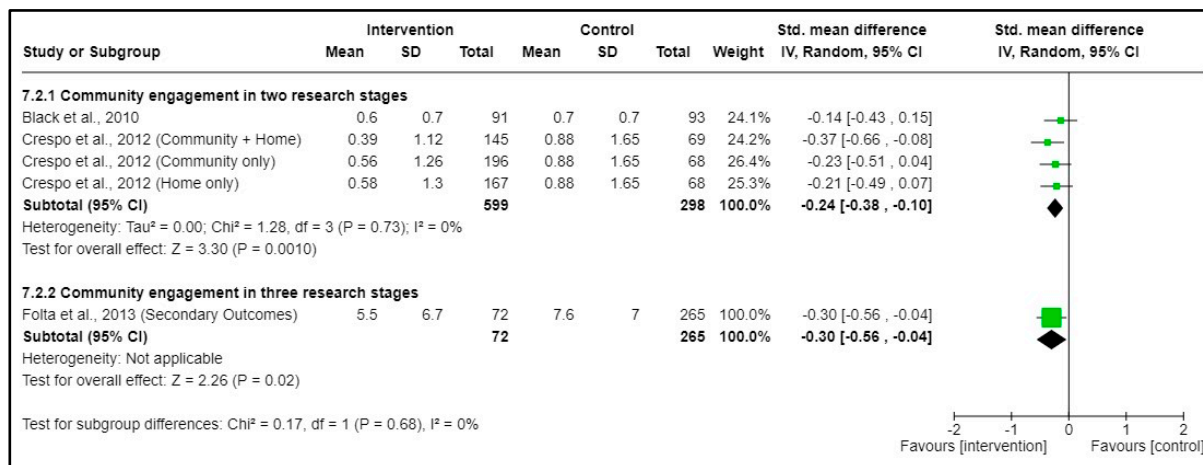


**Figure S10.** Forest plot of sugar-sweetened beverage intake (continuous data) at post-intervention in three included studies

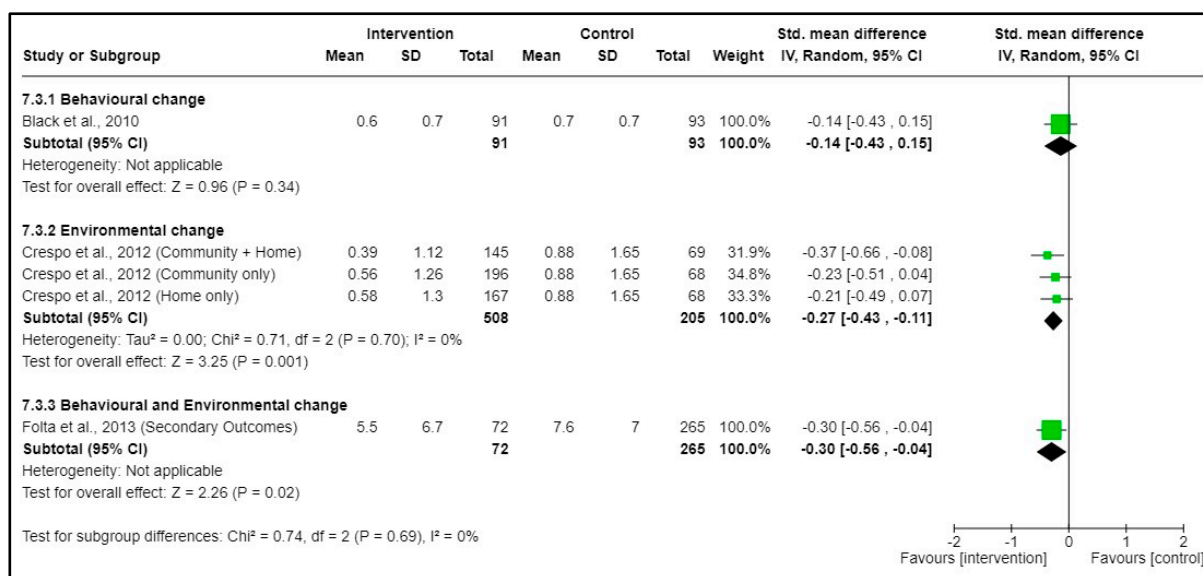


**Figure S11.** Forest plot of sugar-sweetened beverage intake (continuous data) at post-intervention according to a) number of community engagement research stages, and b) type of intervention

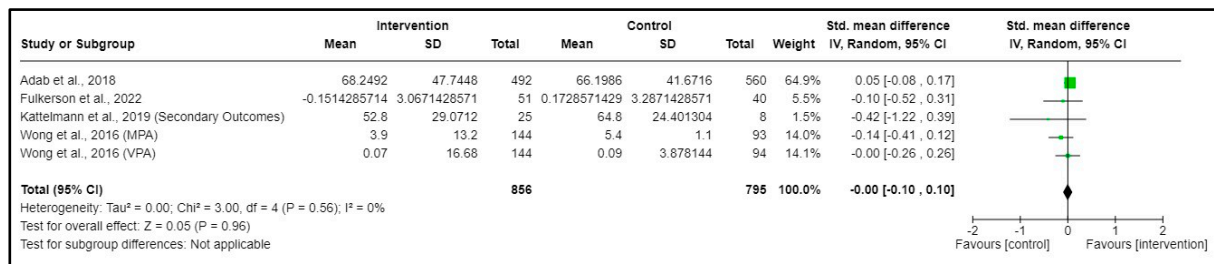
a)



b)

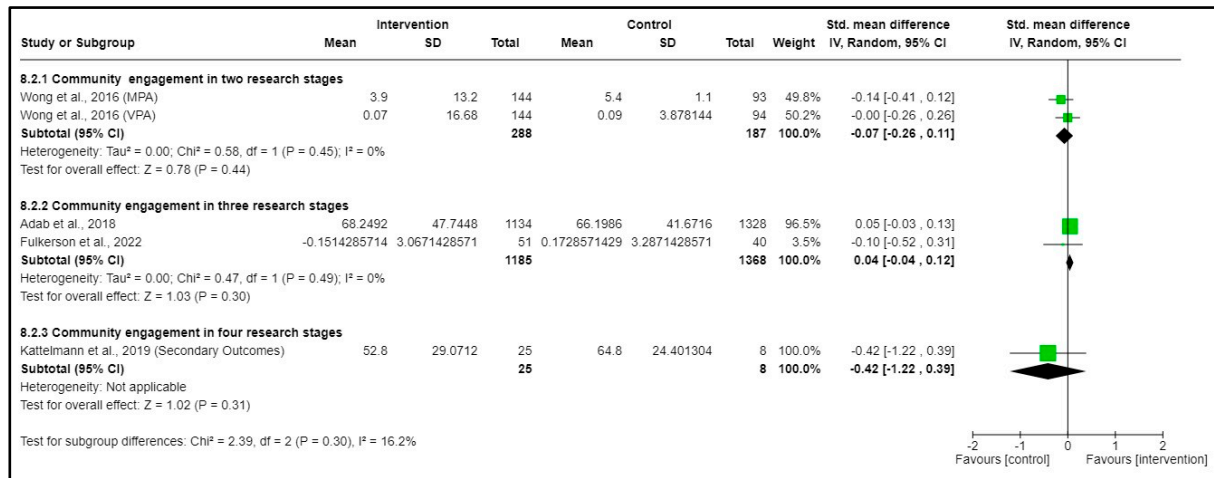


**Figure S12.** Forest plot of MVPA (continuous data) at post-intervention in four included studies

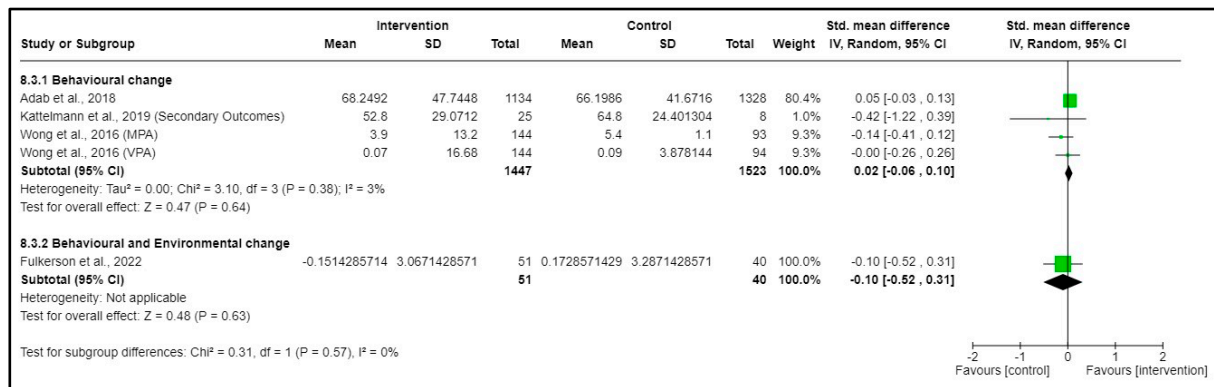


**Figure S13.** Forest plot of MVPA (continuous data) at post-intervention according to a) number of community engagement research stages, and b) type of intervention

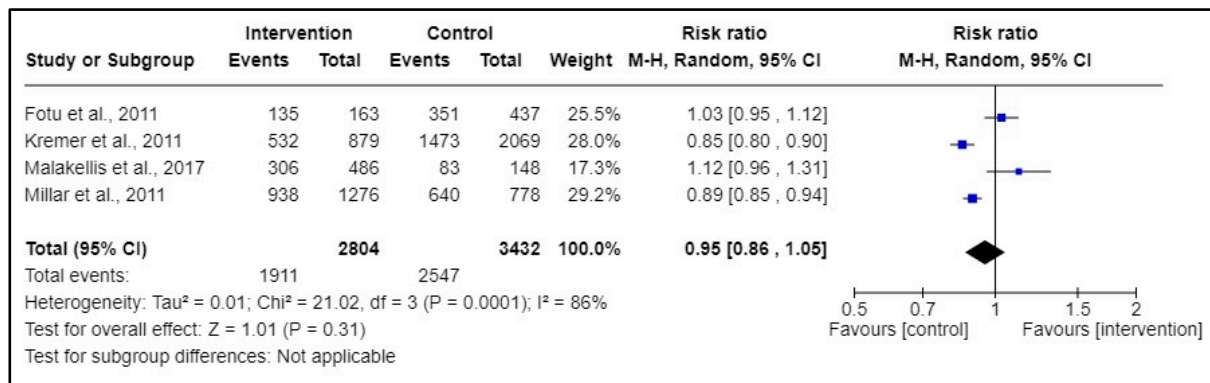
a)



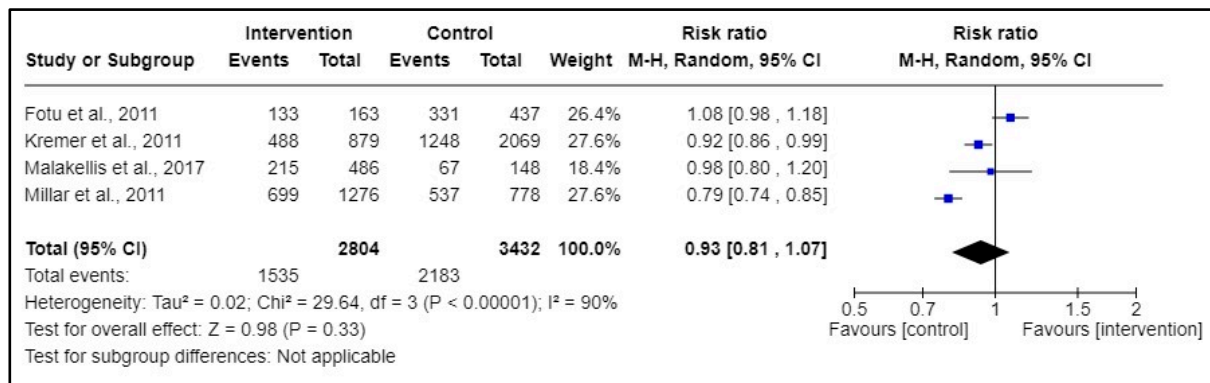
b)



**Figure S14.** Forest plot of small screen time (dichotomous data) at post-intervention in four included studies



**Figure S15.** Forest plot of electronic game time (dichotomous data) at post-intervention in four included studies



**Figure S16.** Funnel plot of BMI-z using standard error (SE) against mean difference (MD): 12 studies (lower MD value indicates better outcome)

