

Supplementary Data

Table S1. Details of antibodies used in IF staining and western blot.

Antibody	Molecular weight	Catalog number	Dilution	Company	Area	adhibition
SYN	38 kDa	AF0257	IF: 1:200 WB: 1:1000	Affinity	Cincinnati, OH, USA	IF, WB
PSD95	105 kDa	AF5283	IF: 1:200 WB: 1:1000	Affinity	Cincinnati, OH, USA	IF, WB
KPL conjugates anti-rabbit IgG (H+L)		5220-0336	1:400	SeraCare	Gaithersburg, MD, USA	IF
5HT _{2c} R	55 kDa	#DF3501	1:1000	Affinity	Cincinnati, OH, USA	WB
GABA _A R	55 kDa	DF6583	1:1000	Affinity	Cincinnati, OH, USA	WB
BDNF	15 kDa	#DF6387	1:1000	Affinity	Cincinnati, OH, USA	WB
TrkB	92 kDa	A12325	1:1000	ABclonal	Boston, MA, USA	WB
p-TrkB (Y705)	92 kDa	ab229908	1:1000	abcam	Cambridge, UK	WB
p70S6K	70 kDa	#AF6226	1:1000	Affinity	Cincinnati, OH, USA	WB
p-p70S6K	70 kDa	#AF3228	1:1000	Affinity	Cincinnati, OH, USA	WB
GAPDH	35 kDa	E-AB-40337	1:2000	Elabscience	Wuhan, China	WB
goat anti-rabbit		E-AB-1003	1:4000	Elabscience	Wuhan, China	WB

Table S2. The monosaccharide composition of DDP-B1.

No.	Monosaccharide	Content (%)
1	Glucose	66.56
2	Mannose	32.85
3	Glucuronic acid	0.59

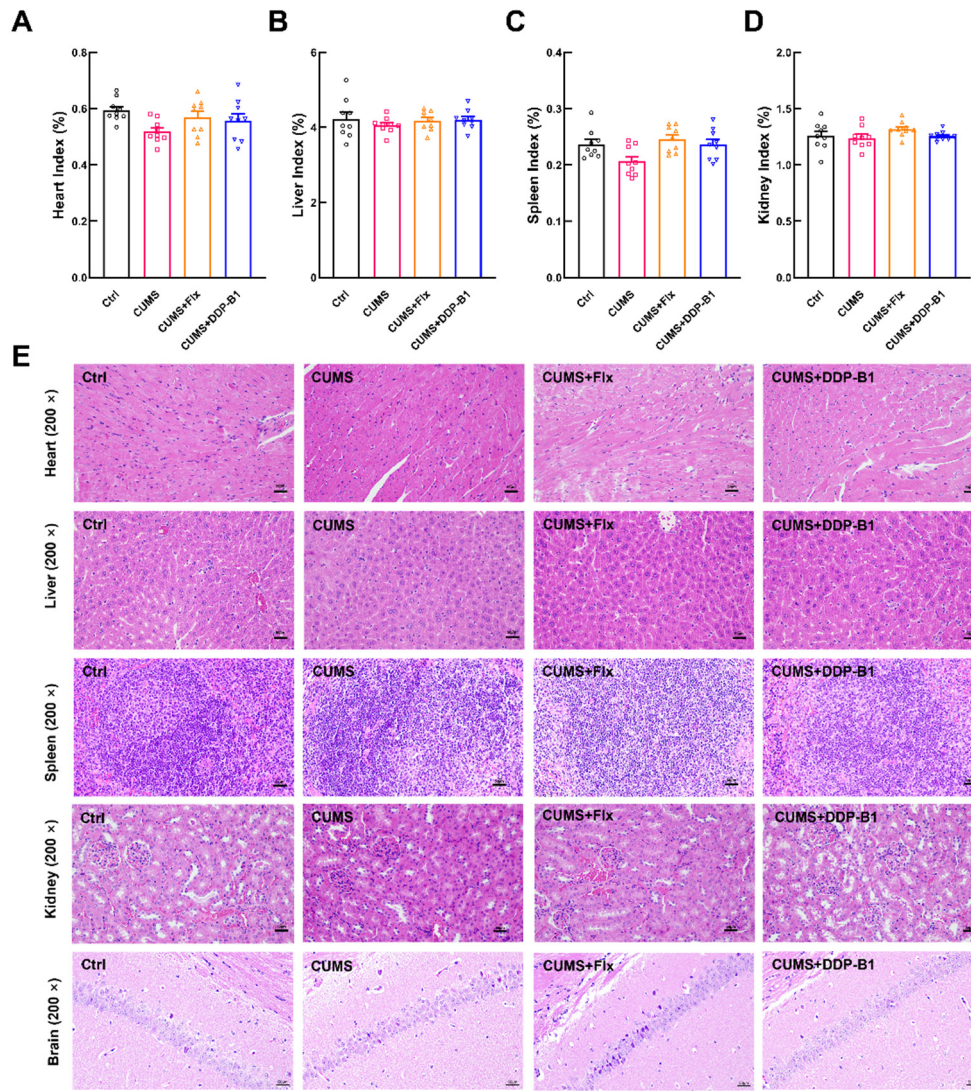


Figure S1. Safety evaluation of CUMS mice. (A) Heart index, (B) liver index, (C) spleen index and (D) kidney index (n = 9); (E) Representative images of H&E staining of the heart, liver, spleen, kidney and brain (200×; scale bar: 50 μm). Data were expressed as mean \pm S.E.M.