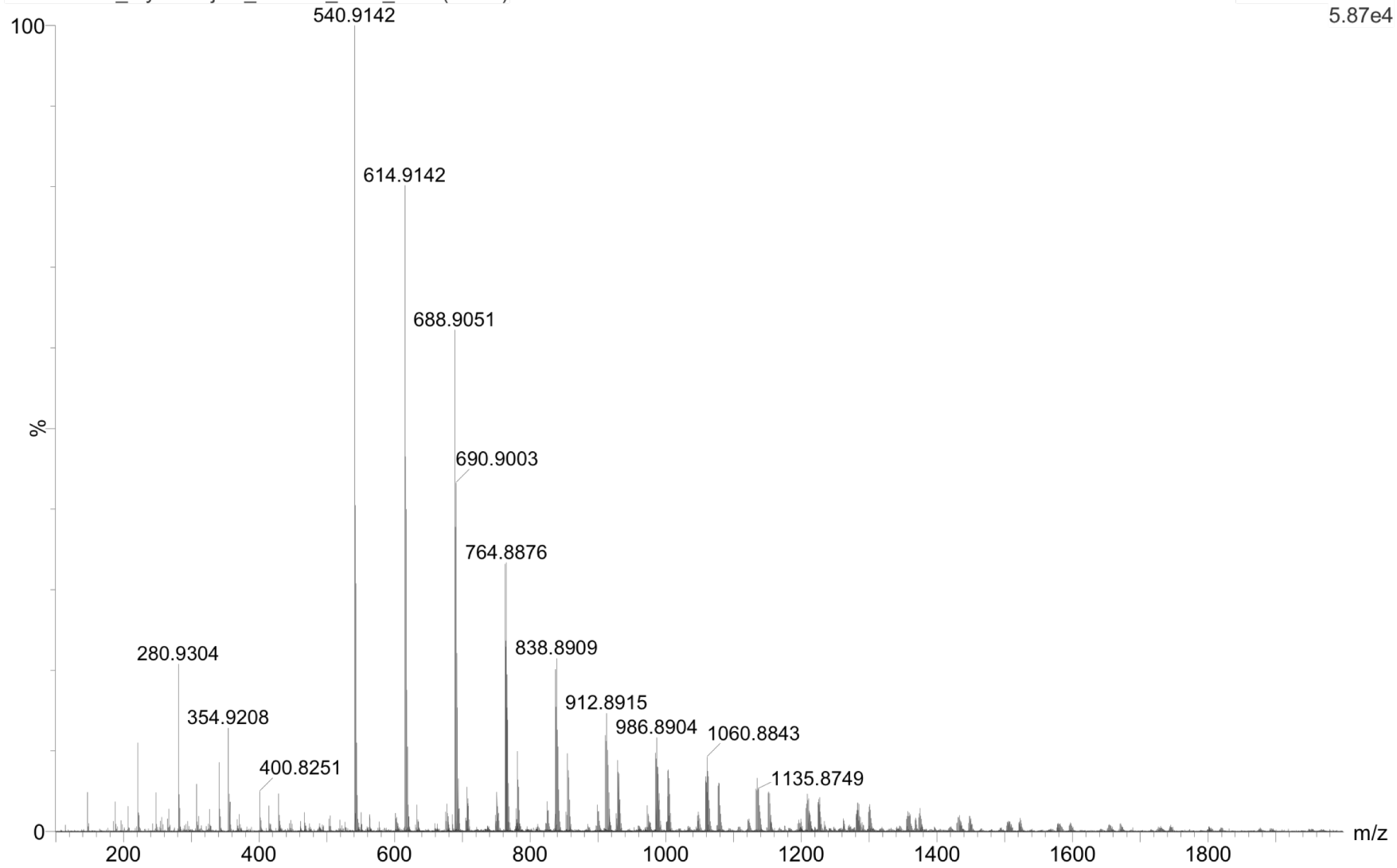


HPLC-grade Acetonitrile Blank

BLANK

31JAN2018_MycoProject_BLANK_ACN_01 1 (0.034)

1: TOF MS ES+
5.87e4

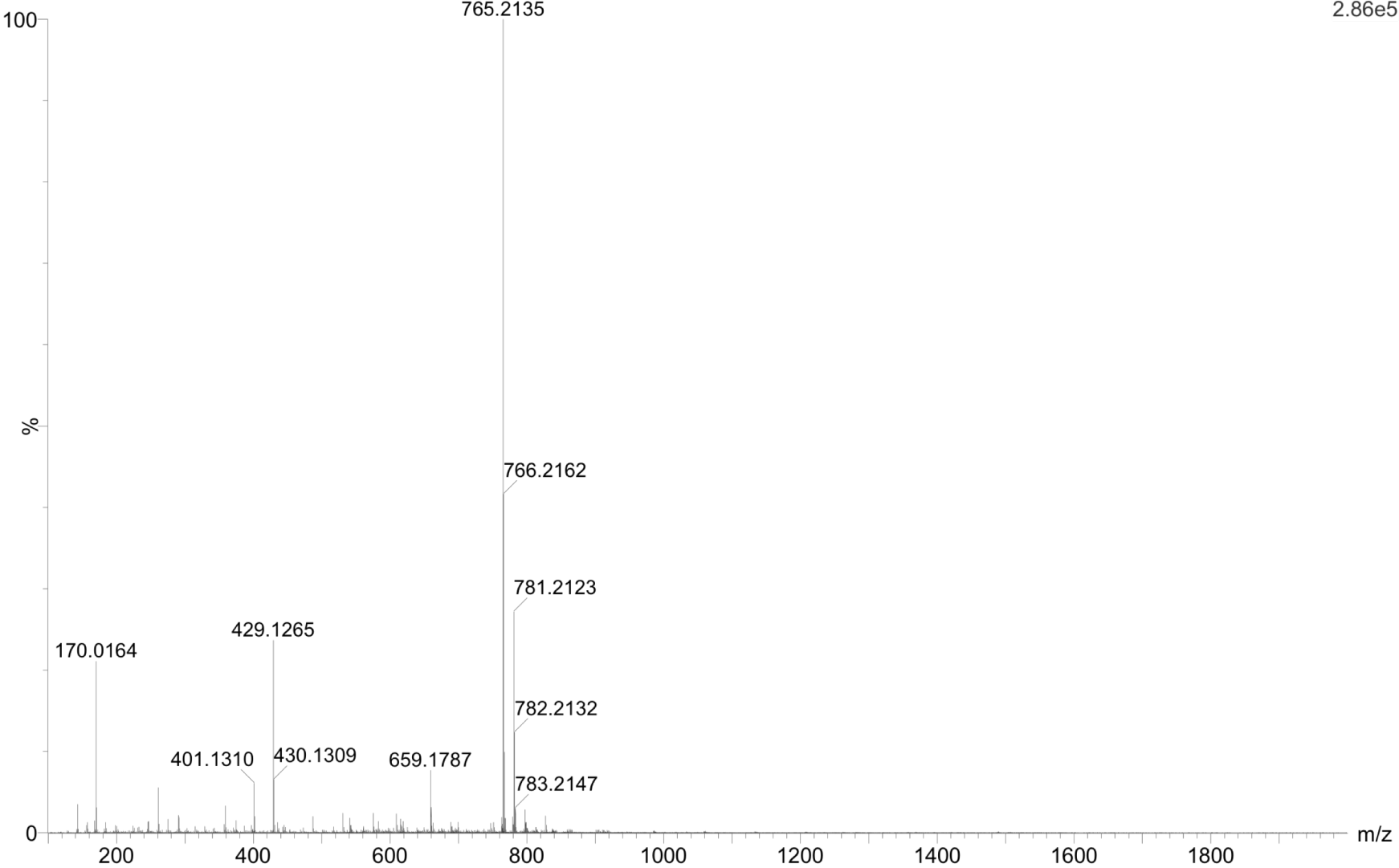


Sample #1
TLC Purified

Myco PUR 1

31JAN2018_MycoProject_MYCO_Purification1_01 1 (0.034)

1: TOF MS ES+
2.86e5

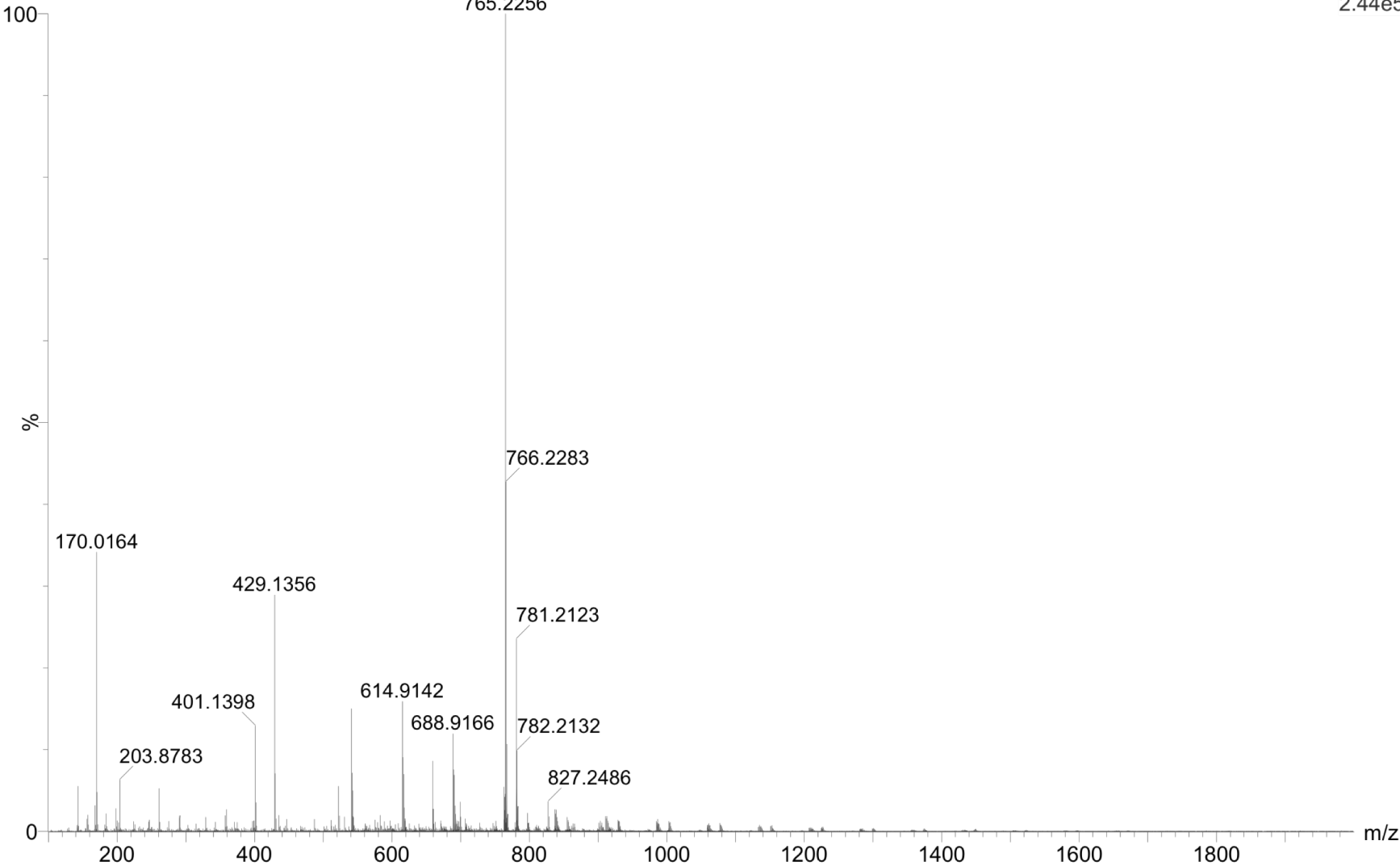


Sample #3
TLC Purified

Myco PUR 3

31JAN2018_MycoProject_MYCO_Purification3_01 1 (0.034)

1: TOF MS ES+
2.44e5

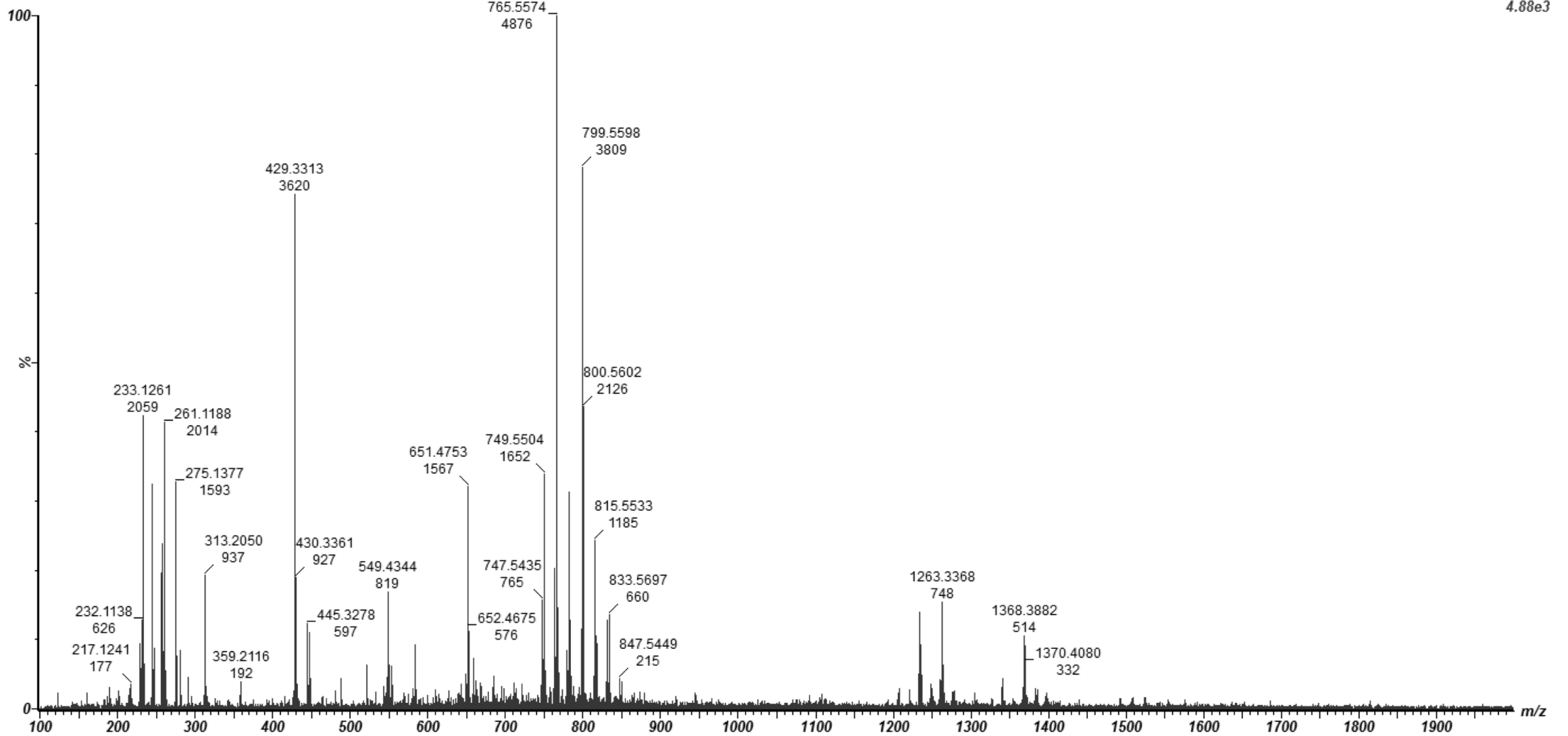


Sample #5

Ethanol Extract

07AUG2017_MycoLProject_PrePur_5_072417_01 2 (0.051) Cm (2)

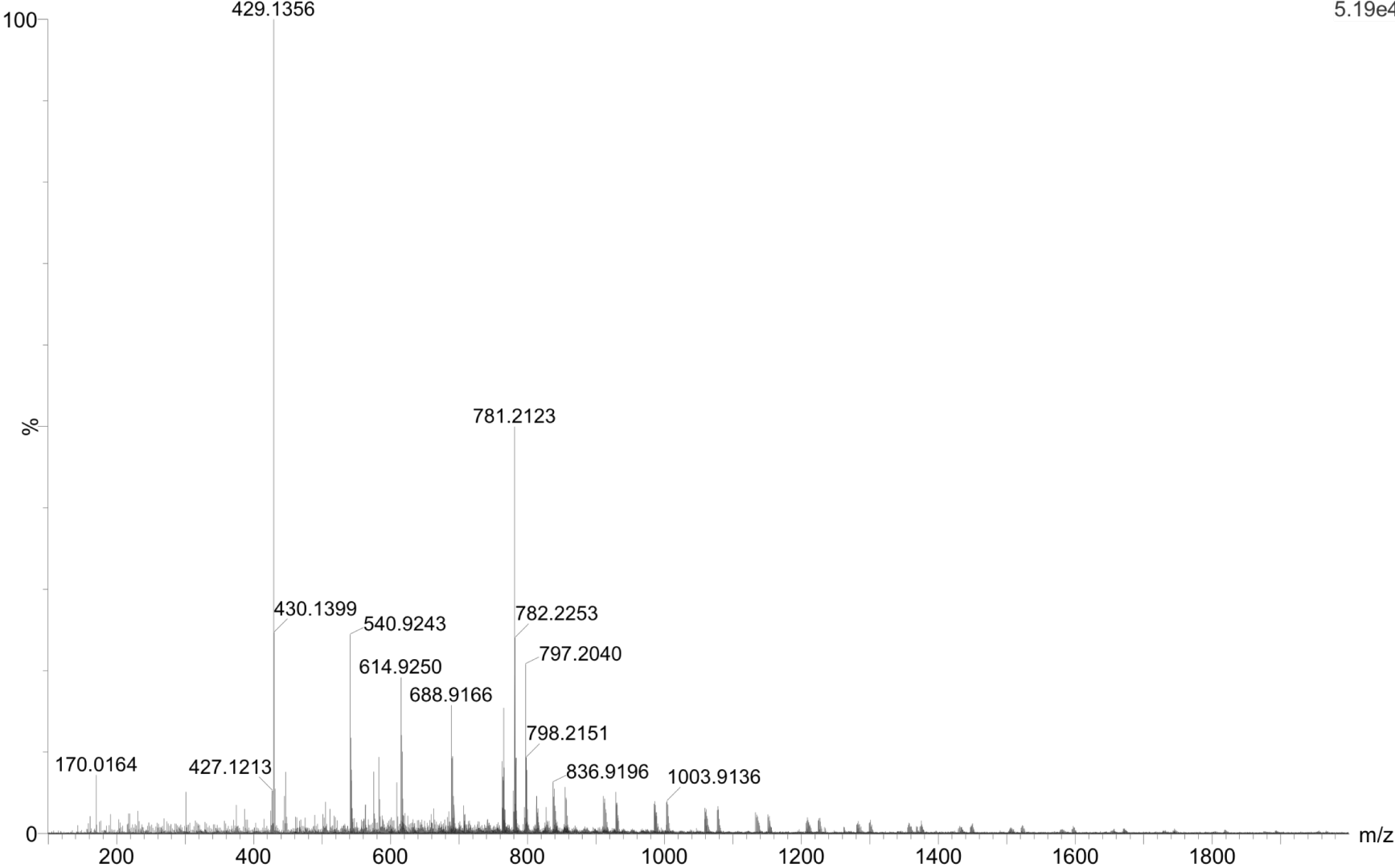
1: TOF MS ES+
4.88e3



Sample #5
TLC Purified

Myco PUR 5
31JAN2018_MycoProject_MYCO_Purification5_01 1 (0.034)

1: TOF MS ES+
5.19e4

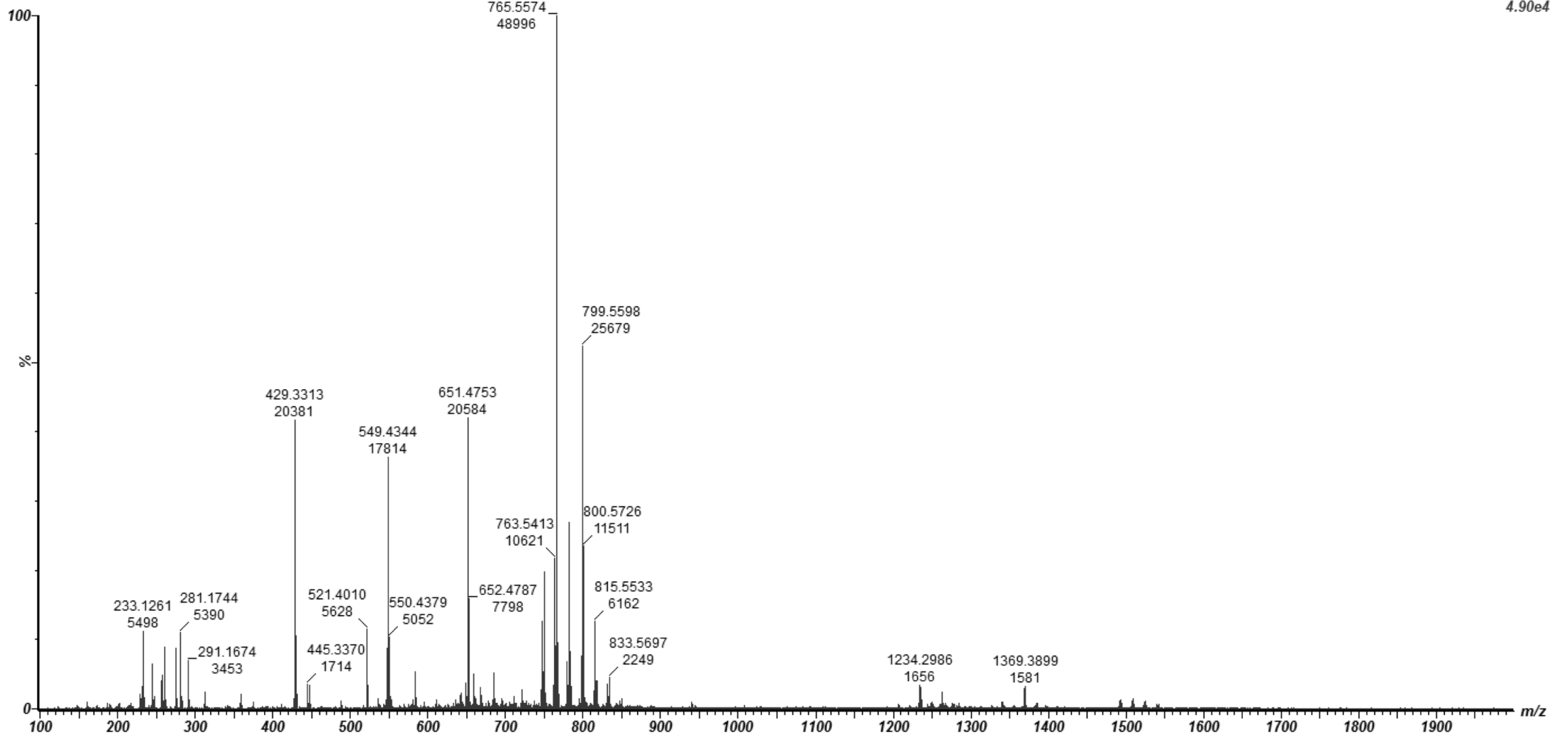


Sample #6

Ethanol Extract

07AUG2017_MycoLProject_PrePur_6_072417_01 2 (0.051) Cm (2)

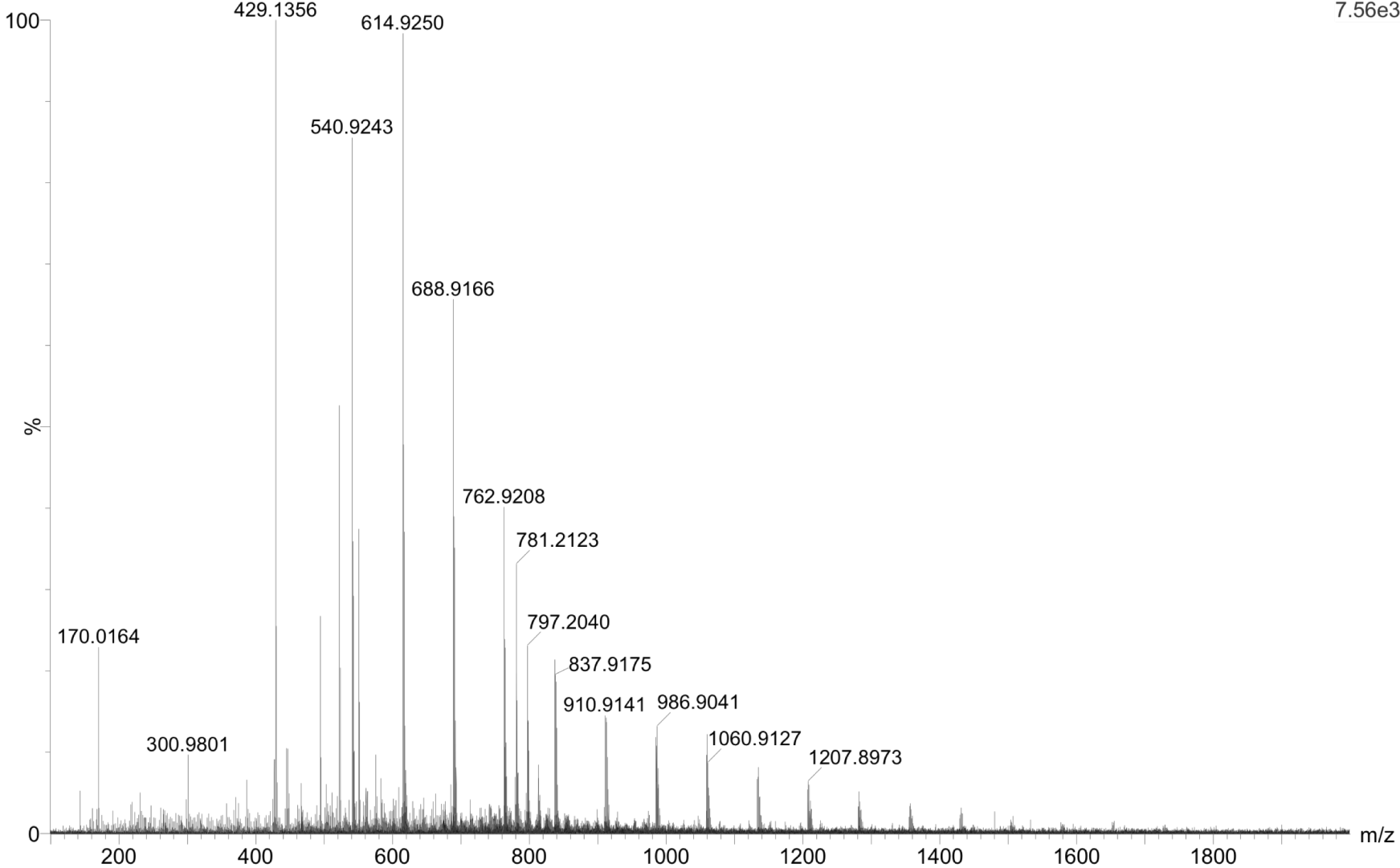
1: TOF MS ES+
4.90e4



Sample #6
TLC Purified

Myco PUR 6
31JAN2018_MycoProject_MYCO_Purification6_01 1 (0.034)

1: TOF MS ES+
7.56e3

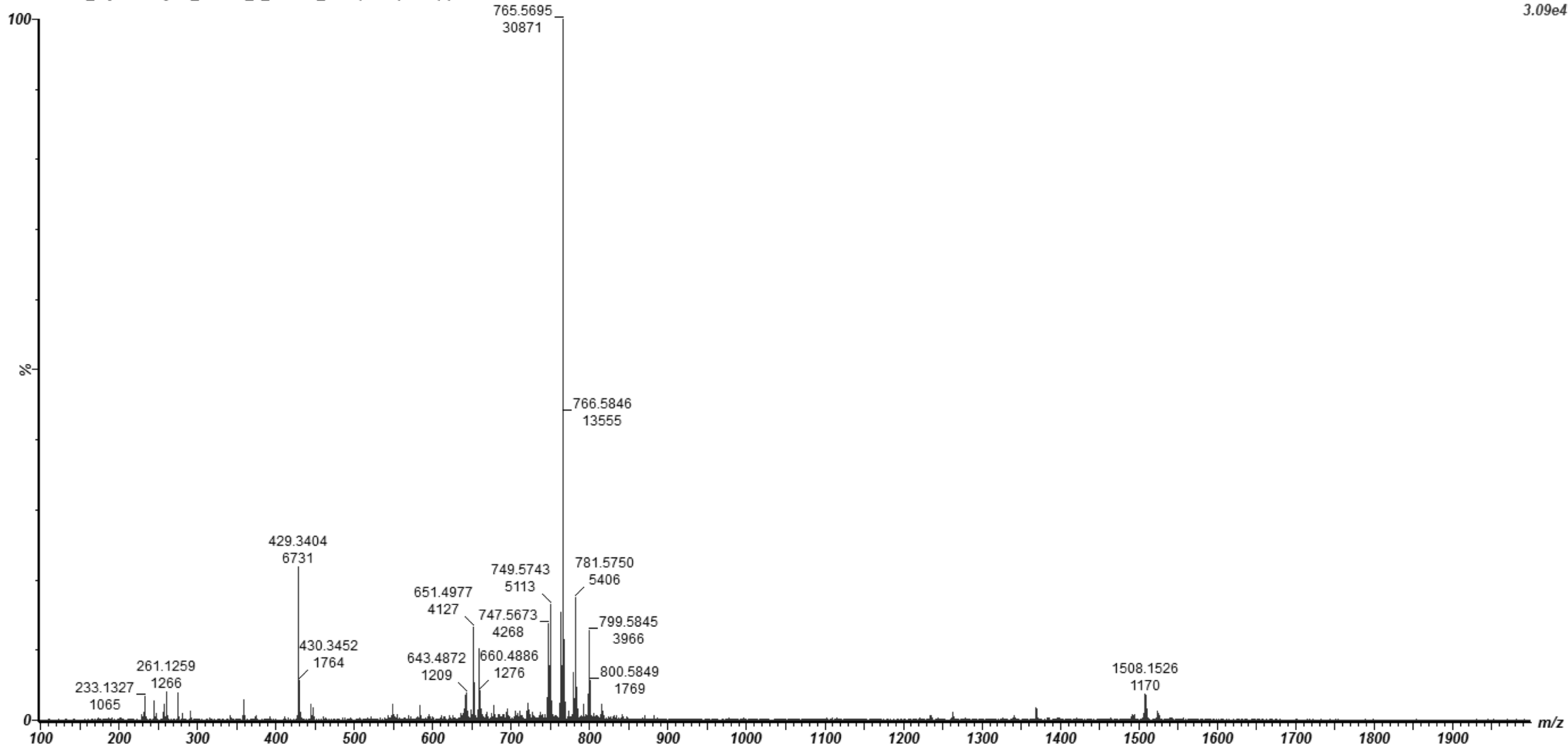


Sample #7

Ethanol Extract

07AUG2017_MycoLProject_PrePur_7_072417_01 2 (0.051) Cm (2)

1: TOF MS ES+
3.09e4

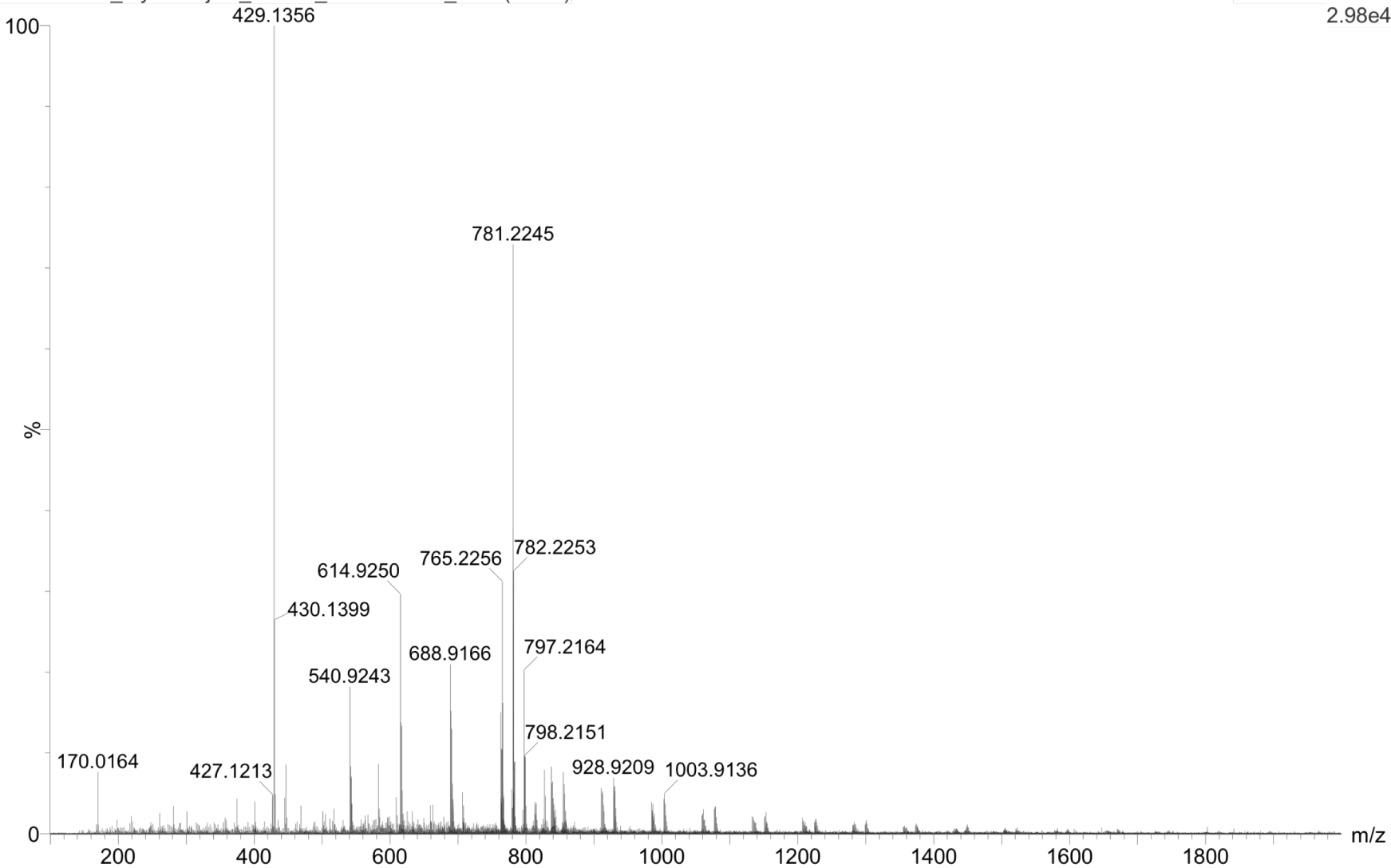


Sample #7
TLC Purified

Myco PUR 7

31JAN2018_MycoProject_MYCO_Purification7_01 1 (0.034)

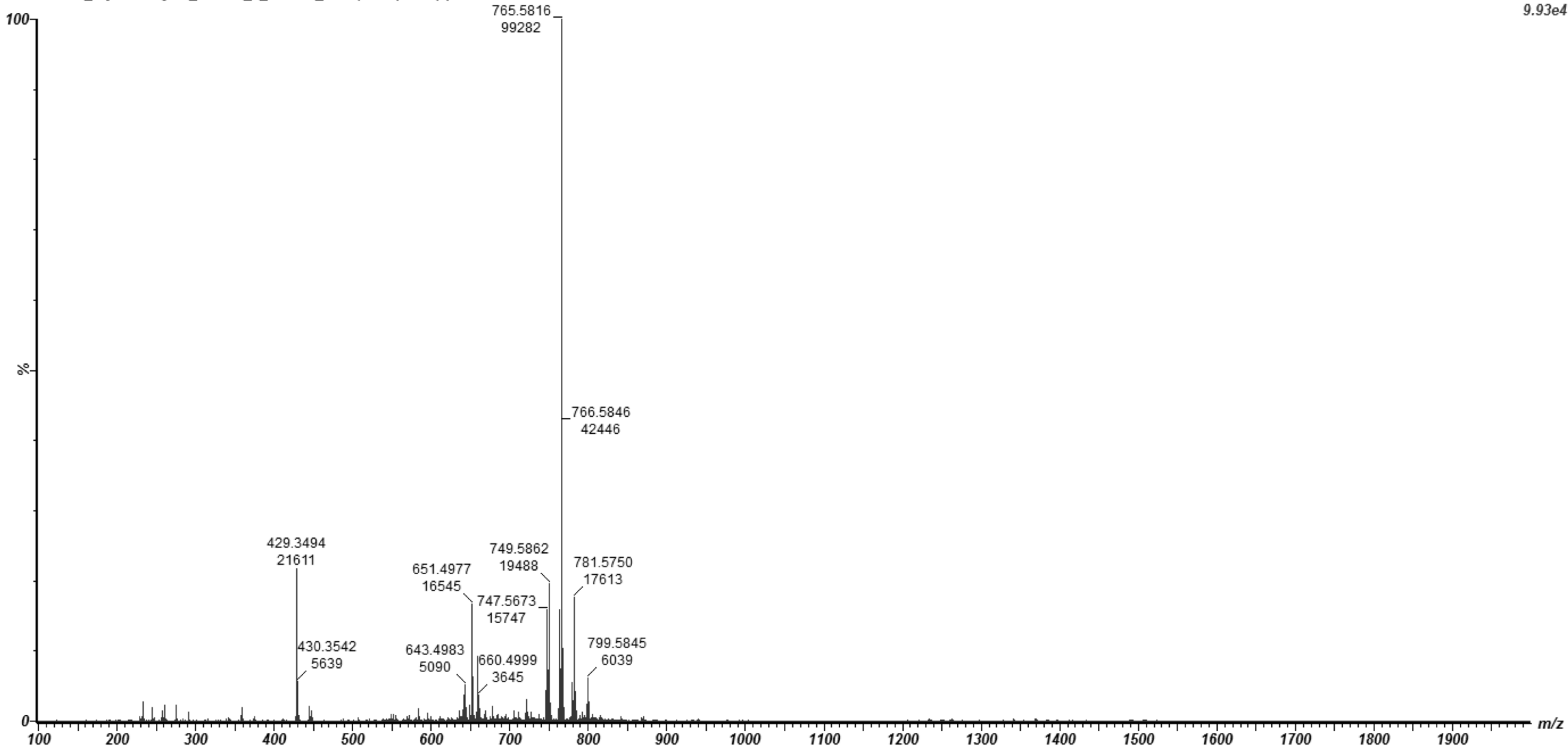
1: TOF MS ES+
2.98e4



Sample #8 Ethanol Extract

07AUG2017_MycoLProject_PrePur_8_072417_01 2 (0.051) Cm (2)

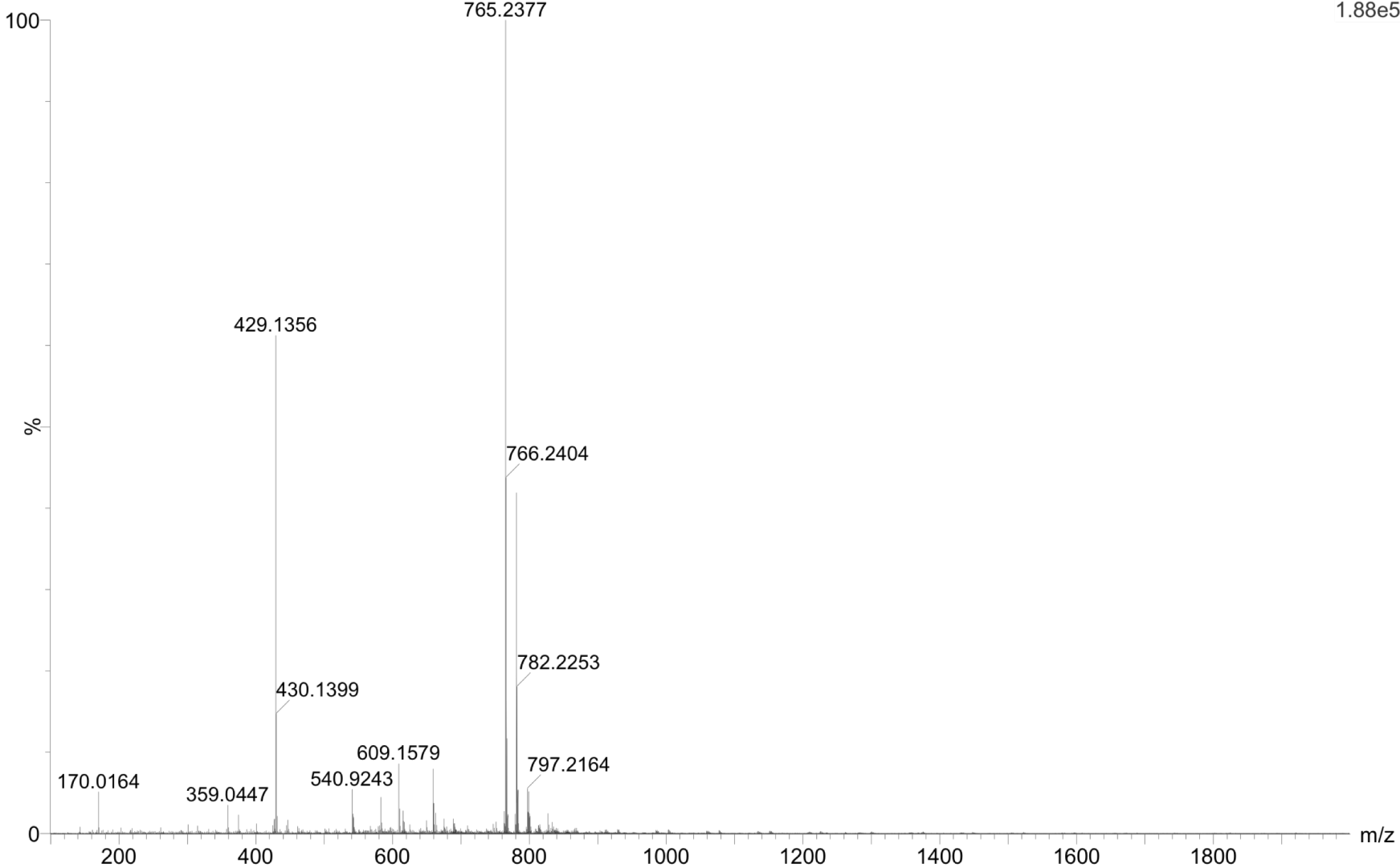
1: TOF MS ES+
9.93e4



Sample #8
TLC Purified

Myco PUR 8
31JAN2018_MycoProject_MYCO_Purification8_01 1 (0.034)

1: TOF MS ES+
1.88e5

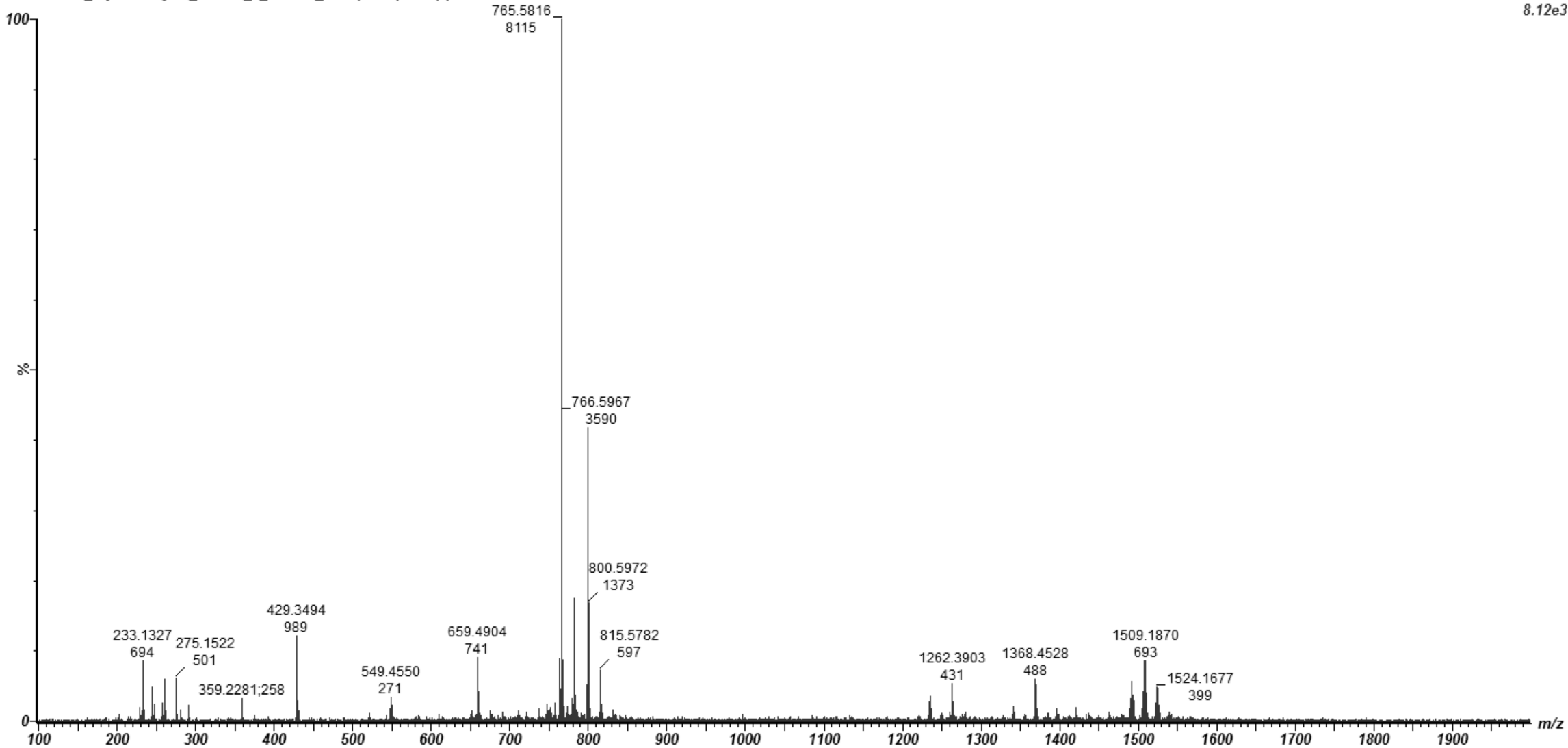


Sample #9

Ethanol Extract

07AUG2017_MycoLProject_PrePur_9_072417_01 2 (0.051) Cm (2)

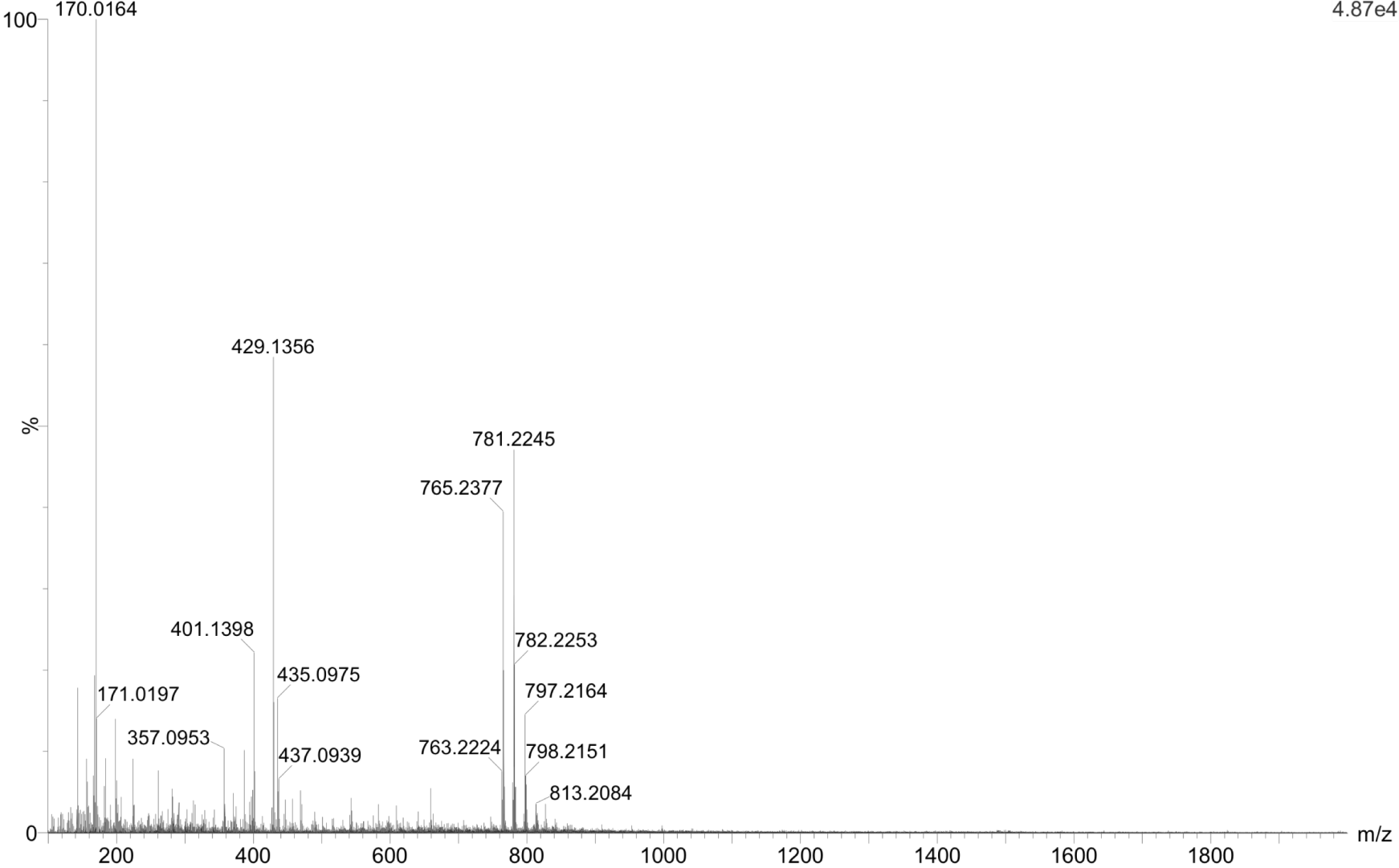
1: TOF MS ES+
8.12e3



Sample #9
TLC Purified

Myco PUR 9
31JAN2018_MycoProject_MYCO_Purification9_01 1 (0.034)

1: TOF MS ES+
4.87e4

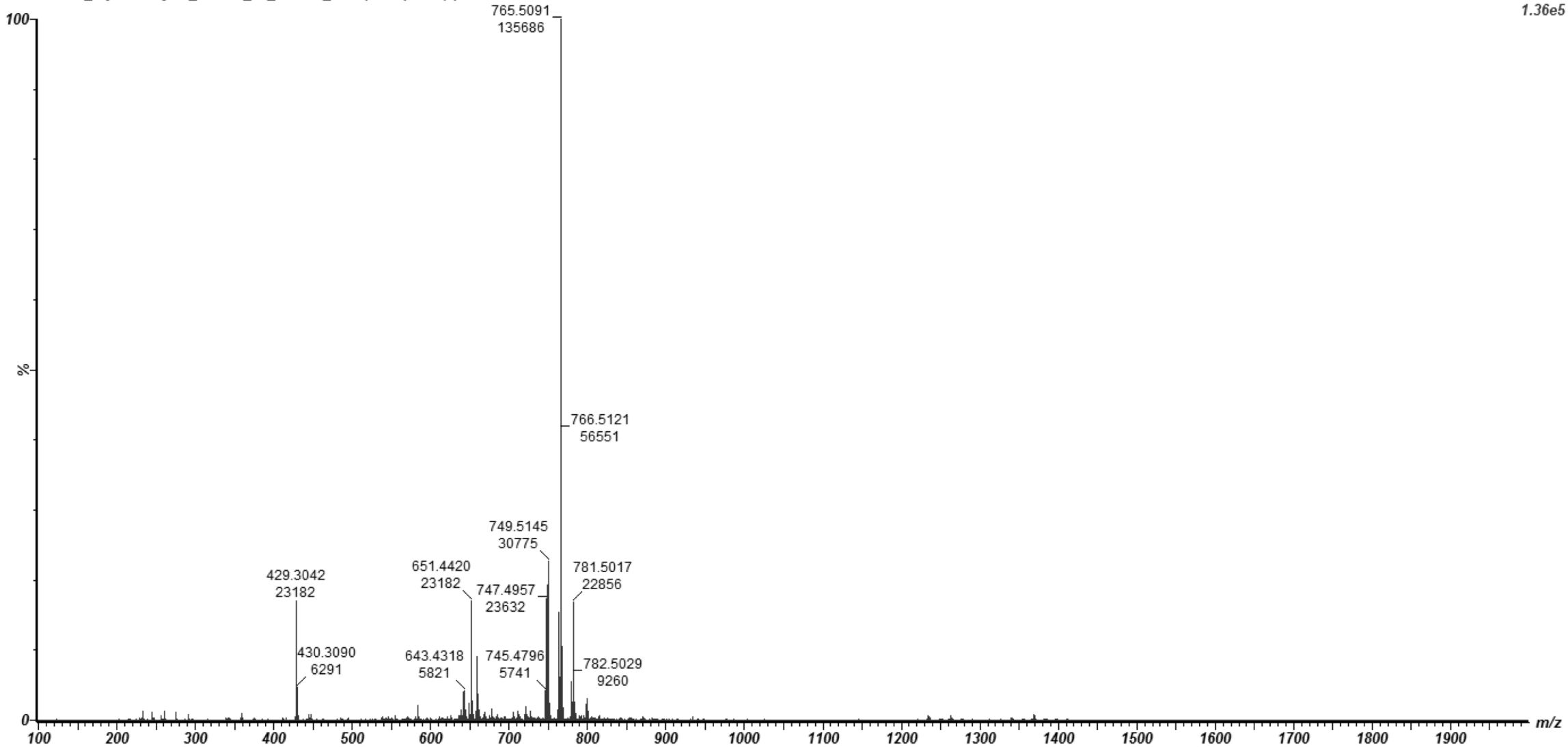


Sample #10

Ethanol Extract

07AUG2017_MycoLProject_PrePur_10_072417_01 2 (0.051) Cm (2)

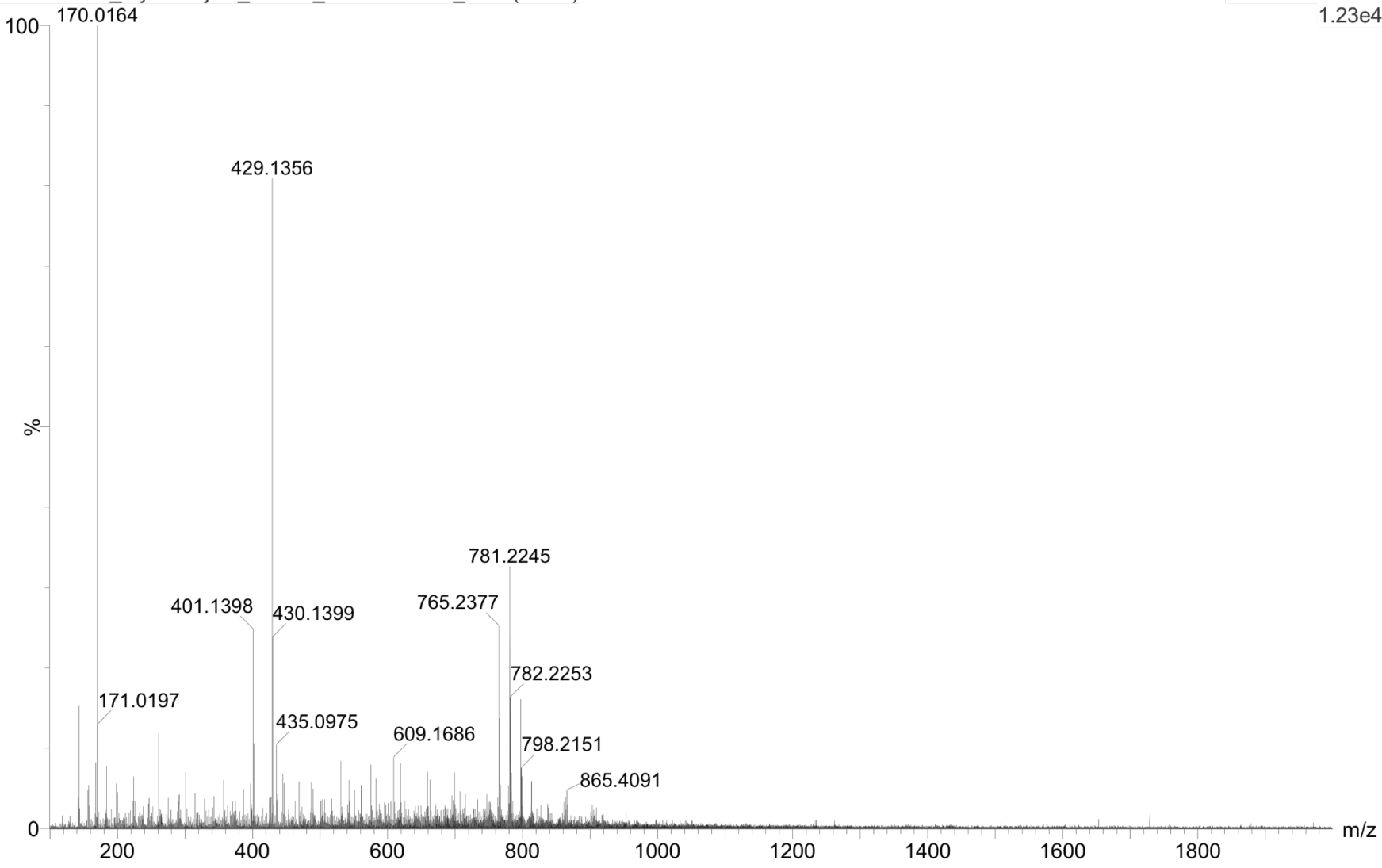
1: TOF MS ES+
1.36e5



Sample #10
TLC Purified

Myco PUR 10
31JAN2018_MycoProject_MYCO_Purification10_01 1 (0.034)

1: TOF MS ES+
1.23e4

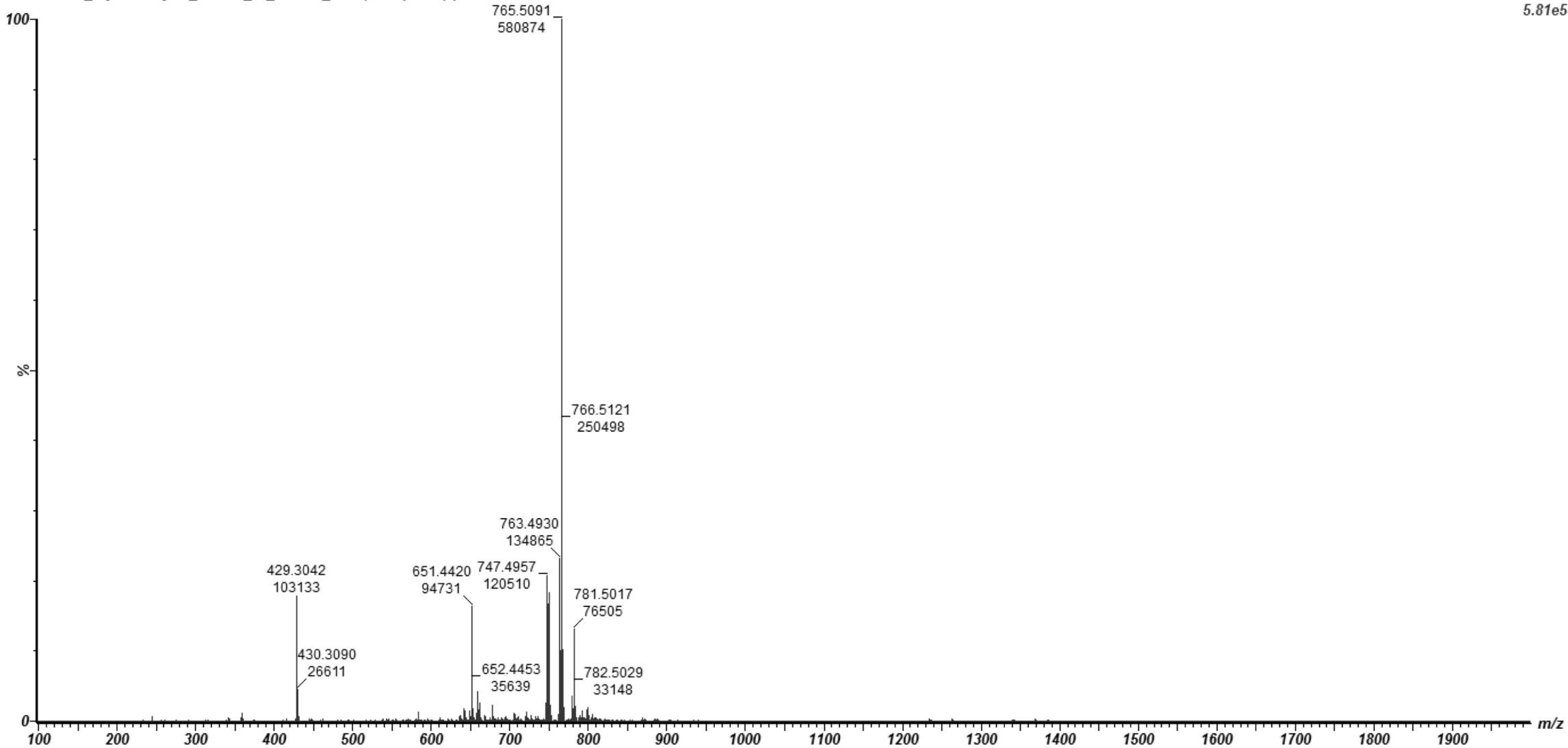


Sample #11

Ethanol Extract

07AUG2017_MycoLProject_PrePur_11_072417_01 2 (0.051) Cm (2)

1: TOF MS ES+
5.81e5



Sample #11
TLC Purified

Myco PUR 11

31JAN2018_MycoProject_MYCO_Purification11_01 1 (0.034)

1: TOF MS ES+
1.42e5

