

# Supplementary Materials: Status of Asp29 and Asp40 in the Interaction of *Naja atra* Cardiotoxins with Lipid Bilayers

Guan-Lin Wu, Yi-Jun Shi, Chia-Hui Huang, Yuan-Chin Lee, Liang-Jun Wang, Jing-Ting Chiou, Chi-Yu Lu and Long-Sen Chang

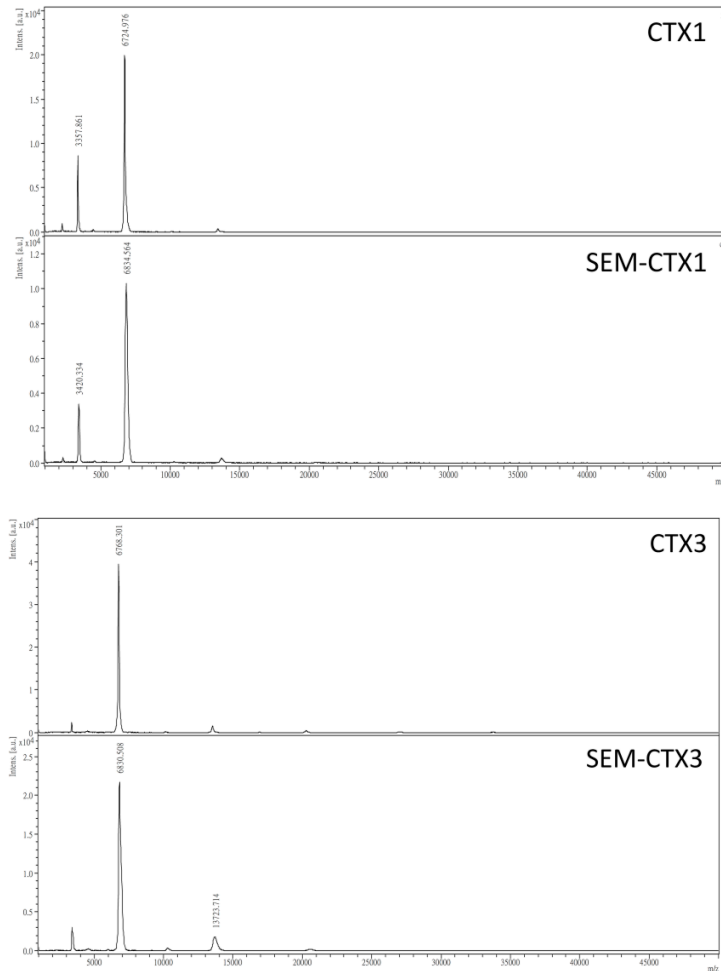
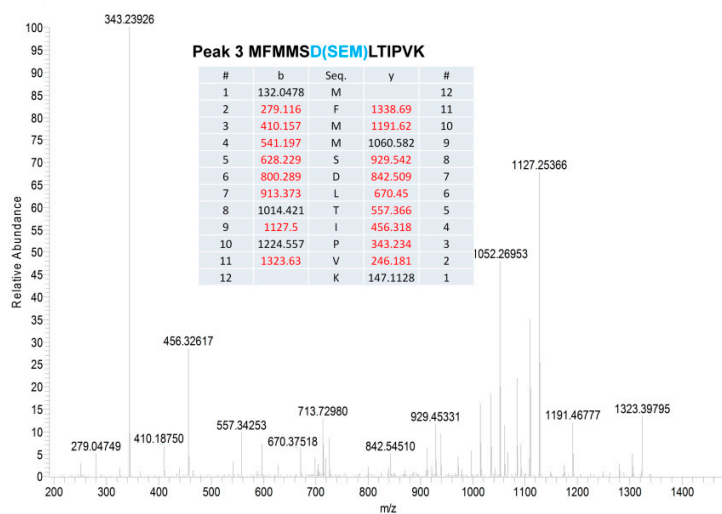
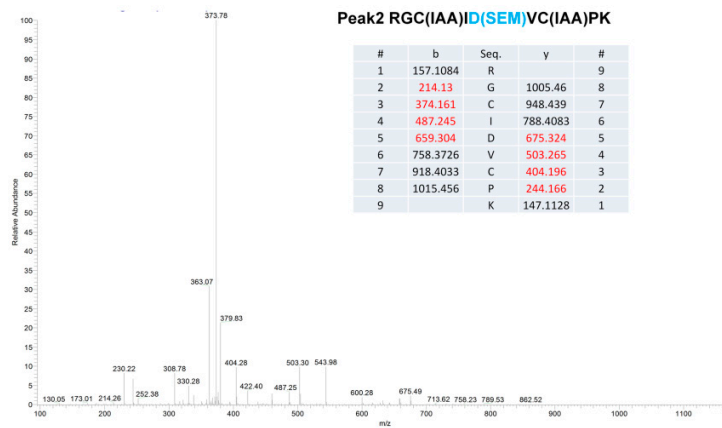
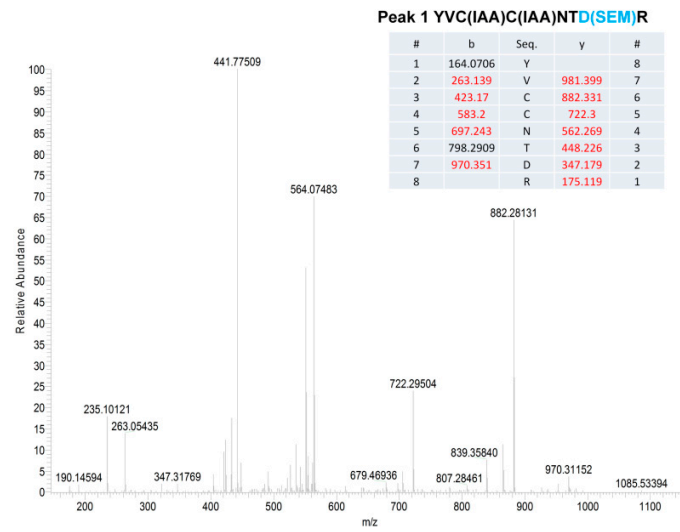


Figure S1. MALDI-TOF mass spectra of CTX1, SEM-CTX1, CTX3, and SEM-CTX3.



**Figure S2.** MS/MS analyses for amino acid sequence of semicarbazide-modified peptides derived from the hydrolysates of tryptic RCM-SEM-cariotoxin 1 (CTX1). Peaks 1, 2, and 3 were separated from the hydrolysates of tryptic RCM-SEM-CTX1 (Figure 4). Amino acid sequences of peaks 1, 2, and 3 were determined using NanoUPLC-MS/MS analyses as described in the Materials and Methods section.