

Supplementary Materials: Development and validation of LC-Q-TOF-MS methodology to determine mycotoxin biomarkers in human urine

Nuria Dasí-Navarro, Manuel Lozano, Sabrina Llop, Ana Esplugues and Alessandra Cimbalo

Guillermina Font, Lara Manyes, Jordi Mañes,* and Pilar Vila-Donat

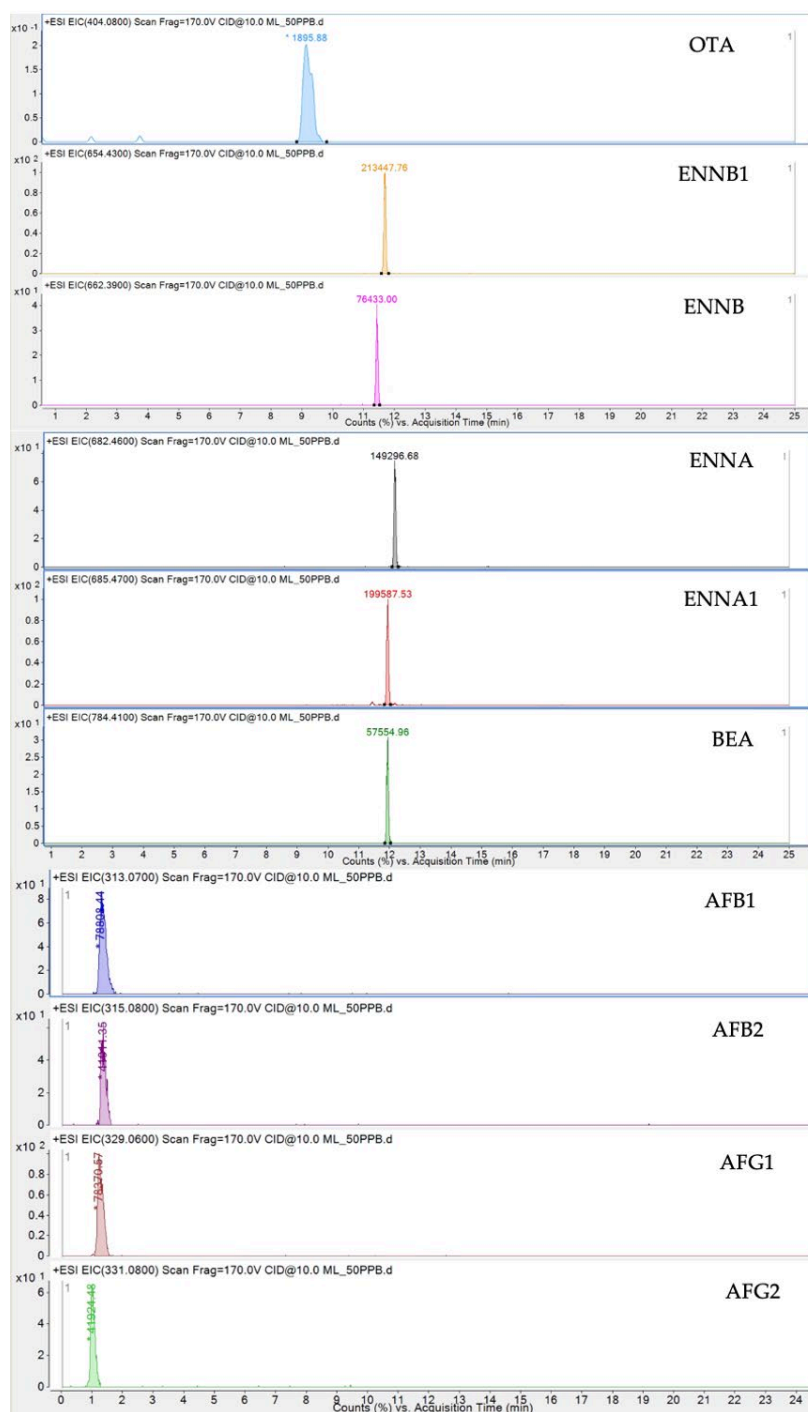


Figure S1. HPLC-Q-TOF-MS chromatogram of 10 validated mycotoxins (Enniatin A, Enniatin B, Enniatin A1, Enniatin B1, Beauvericine, Aflatoxin B1, Aflatoxin B2, Aflatoxin G1, Aflatoxin G2 and Ochratoxin A) in a spiked urine sample at 50 ng/mL.

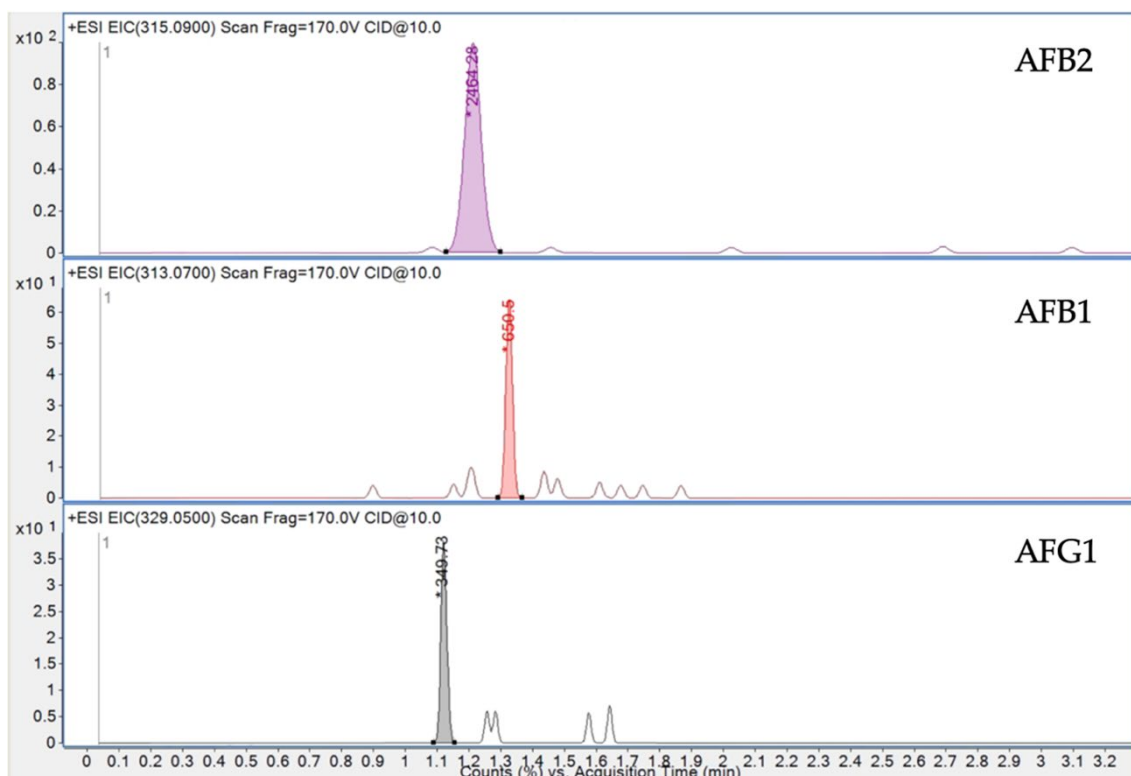


Figure S2. HPLC-Q-TOF-MS chromatogram of 3 positive samples containing Aflatoxin B1 (0.6 ng/mL), Aflatoxin B2 (1.4 ng/mL) and Aflatoxin G1 (0.5 ng/mL).

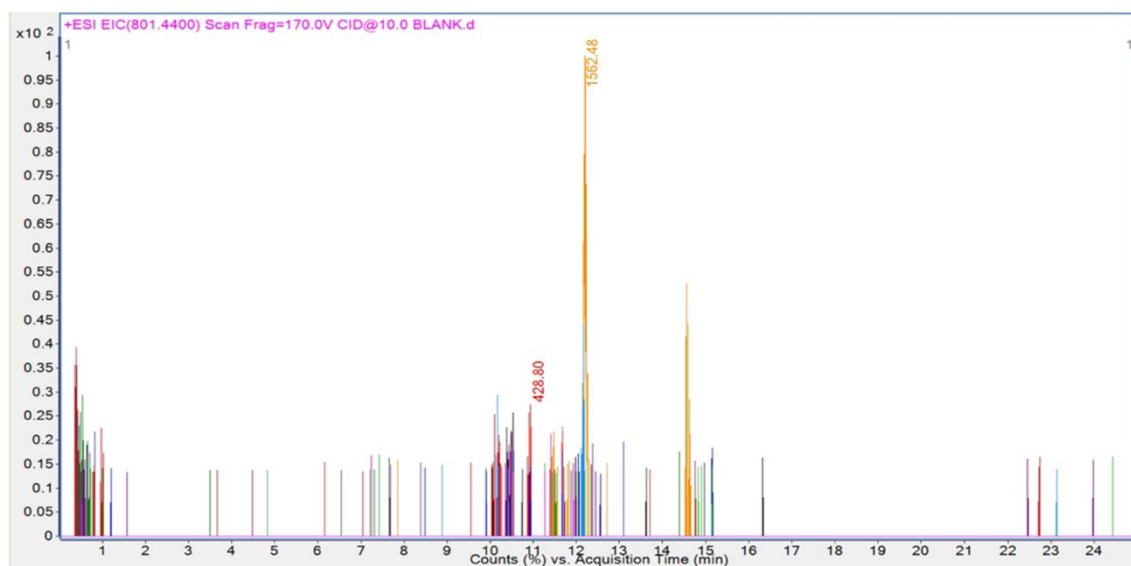


Figure S3. HPLC-Q-TOF-MS chromatogram of blank urine sample.