

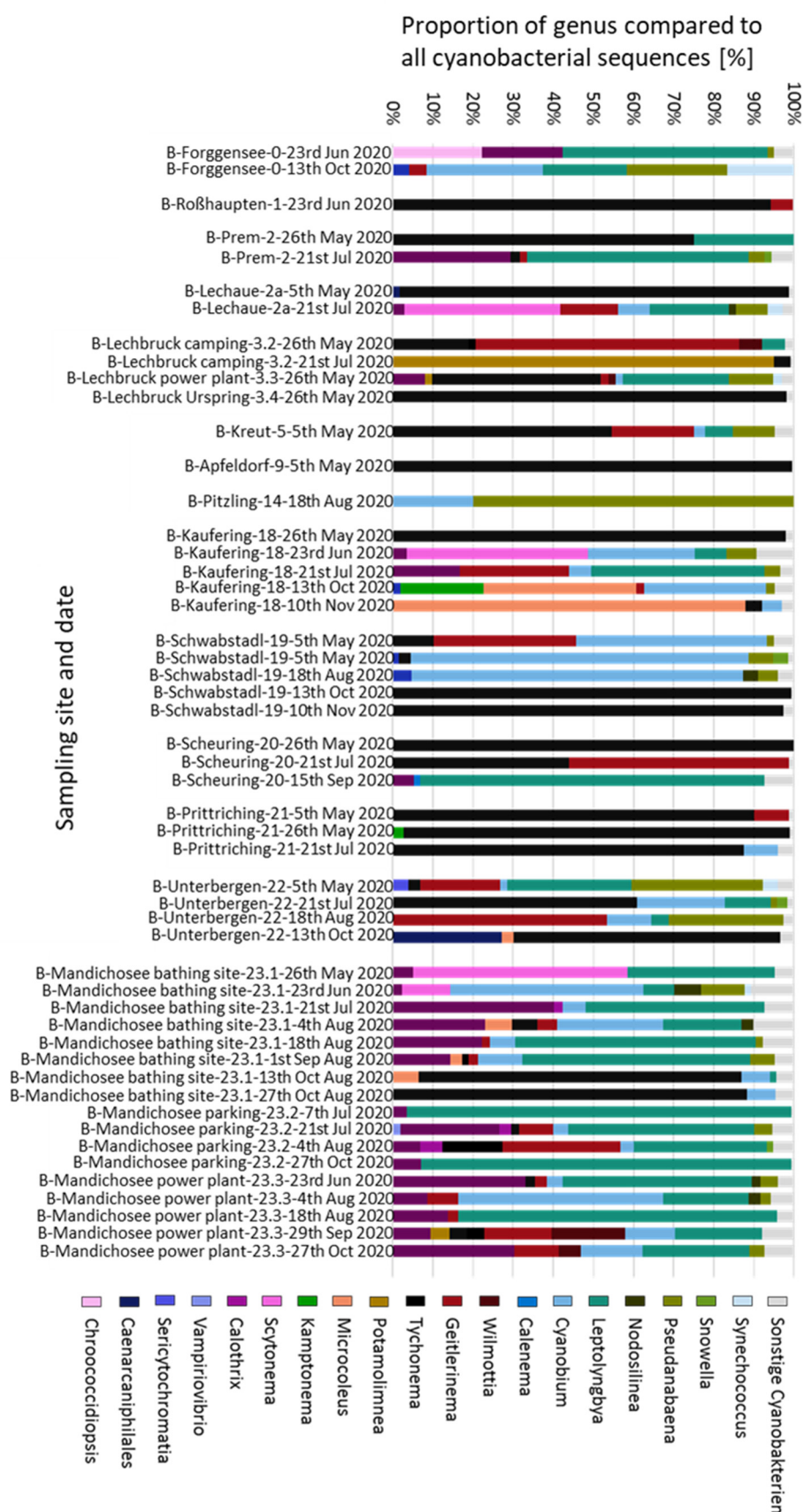
## Article

# Spatio-Temporal Monitoring of Benthic Anatoxin-a-Producing *Tychonema* sp. in the River Lech, Germany

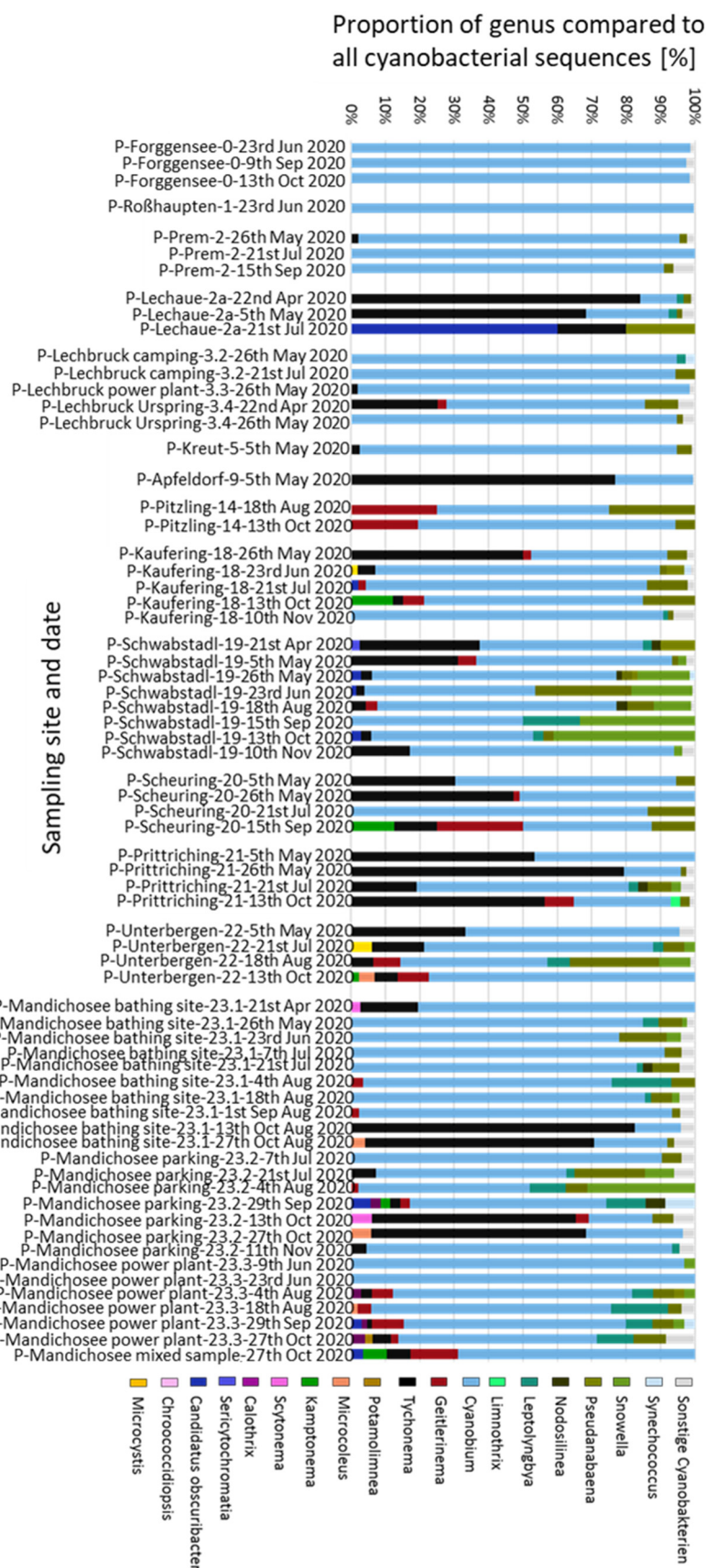
Franziska Bauer, Michael Stix, Bernadett Bartha-Dima, Juergen Geist and Uta Raeder

**Table S1.** Hydrophysical parameters of all samples and values of the anatoxin-a measurements.

	Sampling Site	Temperature [°C]	Oxygen Saturation [%]	pH	Electrical Conductivity [ $\mu\text{S}/\text{cm}$ ]
<b>0</b>	Forggensee	8.2–20.9	99–114	8.3–8.8	290–339
<b>1</b>	Roßhaupten	8.4–21.2	99–120	8.3–8.8	290–345
<b>2</b>	Prem	8.3–17.6	100–107	8.3–8.9	297–342
<b>2A</b>	Lechaue	8.4–12.9	95–108	7.9–8.4	442–528
<b>3.1</b>	Lechbruck-Kneipp pool	6.7–19.4	80–200	8.0–8.6	451–597
<b>3.2</b>	Lechbruck-camping	7.0–16.4	82–114	8.1–8.6	376–473
<b>3.3</b>	Lechbruck-power plant	8.1–16.2	96–115	8.3–8.6	298–344
<b>3.4</b>	Lechbruck-Urspring	7.0–15.9	99–125	8.3–8.6	310–450
<b>5</b>	Kreut	8.3–16.2	100–117	8.3–8.8	309–353
<b>9</b>	Apfeldorf	8.0–18.4	83–111	8.3–8.5	319–398
<b>14</b>	Pitzling	8.6–18.8	98–119	8.3–8.7	323–483
<b>18</b>	Kaufering	8.7–21.2	103–149	8.4–8.8	314–391
<b>19</b>	Schwabstadl	8.2–23.3	101–151	8.2–8.9	332–402
<b>20</b>	Scheuring	8.7–22.1	102–154	8.5–8.8	311–393
<b>21</b>	Prittriching	8.6–21.7	102–133	8.4–8.9	317–395
<b>22</b>	Unterbergen	8.9–22.4	103–140	8.4–8.8	316–396
<b>23.1</b>	Mandichosee-bathing site	6.8–23.5	95–162	8.3–8.8	312–400
<b>23.2</b>	Mandichosee-parking	6.8–23.0	94–147	8.3–8.7	312–400
<b>23.3</b>	Mandichosee-power plant	6.5–21.7	101–188	8.2–8.8	317–387



**Figure S1.** Cyanobacterial community of the benthic samples based on Illumina MiSeq sequencing data.



**Figure S2.** Cyanobacterial community of the pelagic samples based on Illumina MiSeq sequencing data.