

Supplementary Materials: Multiplexed Host-Induced Gene Silencing of *Aspergillus flavus* Genes Confers Aflatoxin Resistance in Groundnut

Kalyani Prasad, Kalenahalli Yogendra, Hemalatha Sanivarapu, Kanniah Rajasekaran, Jeffrey W. Cary, Kiran K. Sharma and Pooja Bhatnagar-Mathur

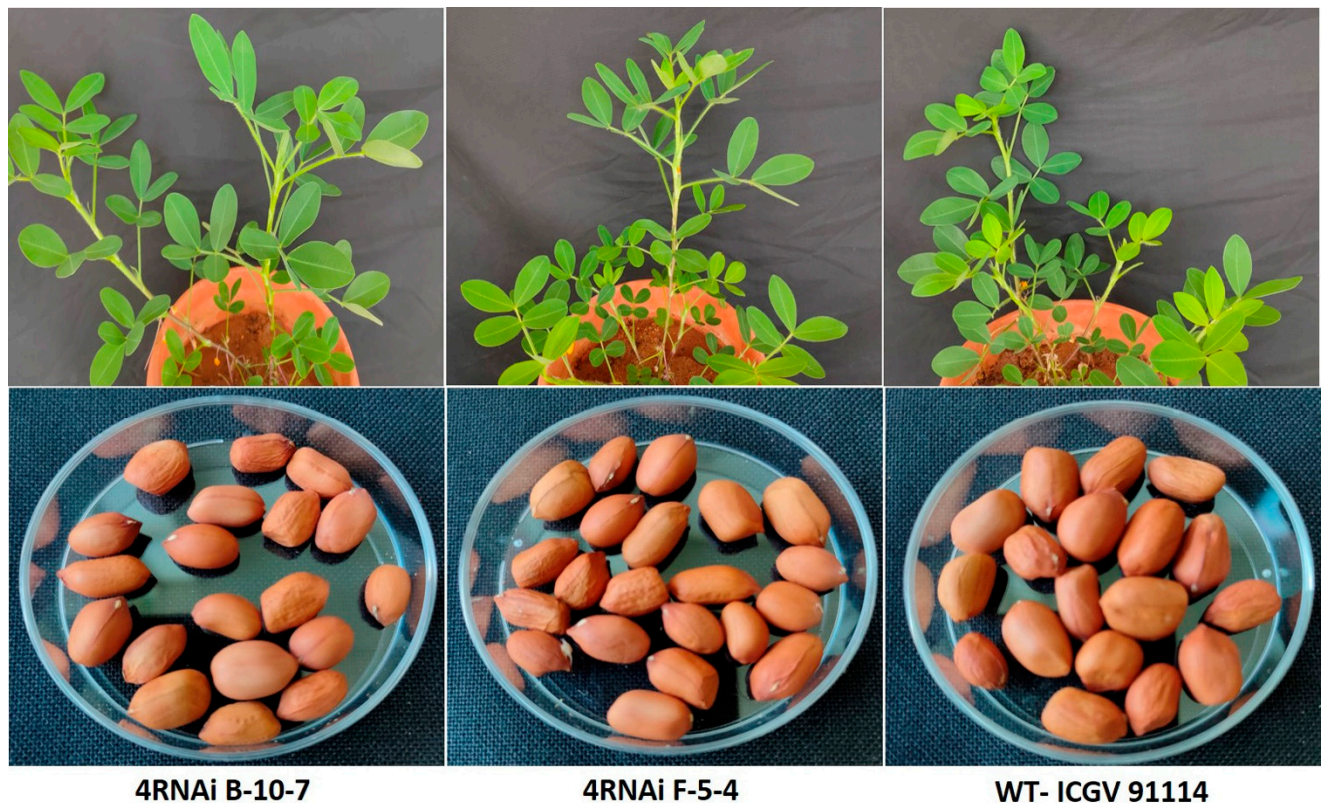


Figure S1: Phenotypic assessment of groundnut HIGS lines in T₃ generation and wild type control ICGV 91114

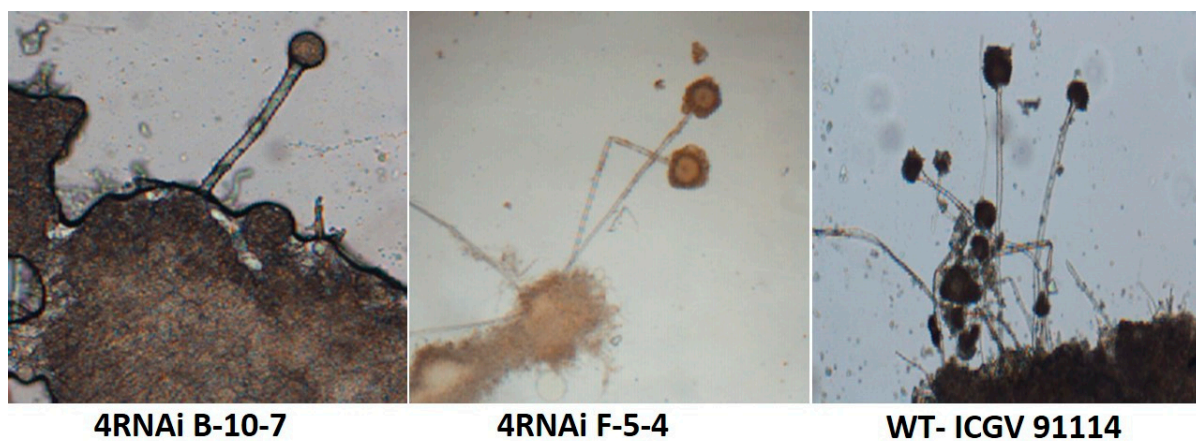


Figure S2: Microscopic observation of *A. flavus* growth inhibition in HIGS lines and susceptible wild type control

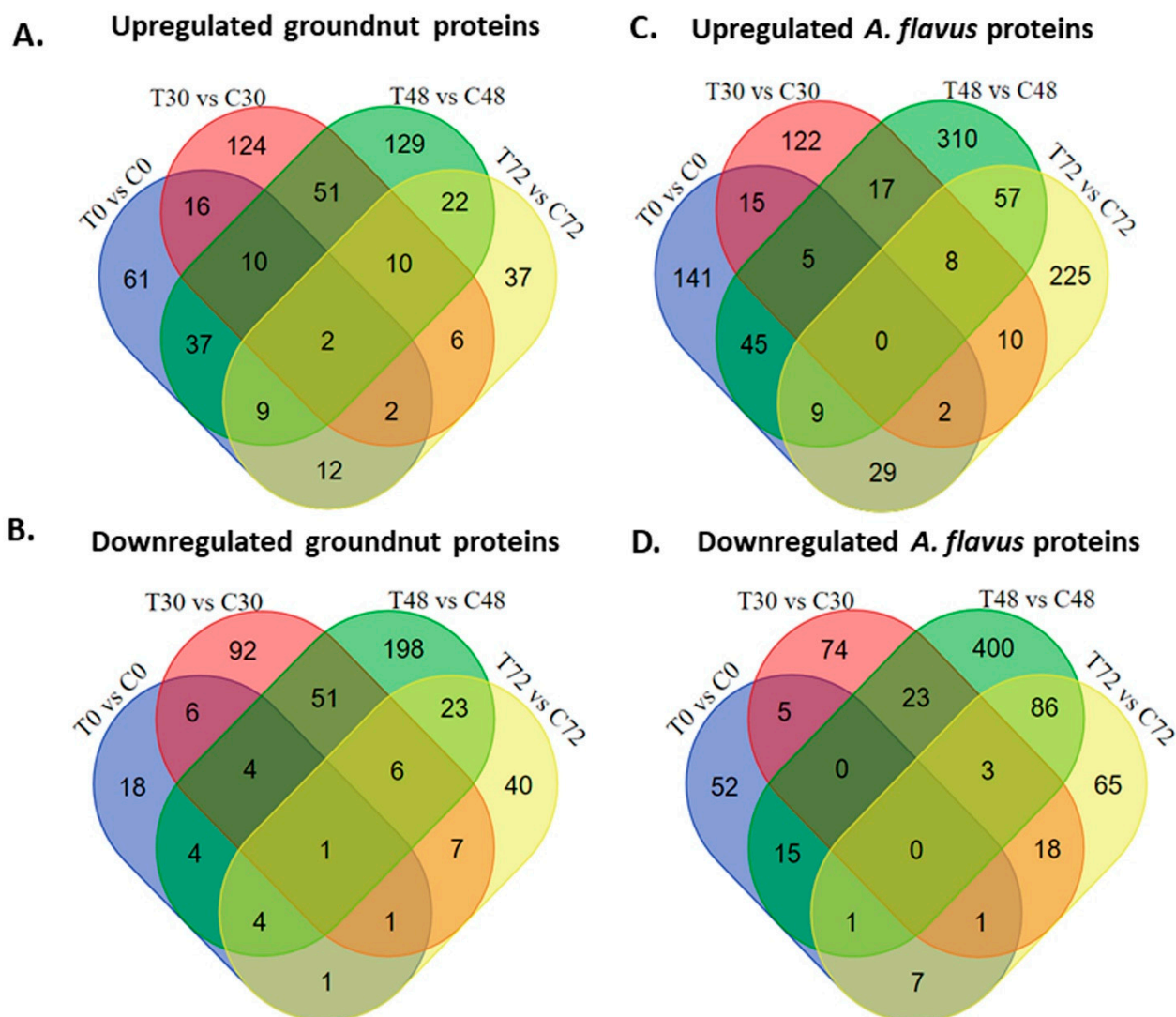


Figure S3: Venn diagram showing significantly differentially expressed groundnut and *A. flavus* proteins during infection at 0, 30, 48 and 72 hpi. (A) Upregulated groundnut proteins between 4RNAi and WT controls; (B) Downregulated groundnut proteins between 4RNAi and WT controls; (C) Upregulated *A. flavus* proteins between treatments 4RNAi and WT controls; (D) Downregulated *A. flavus* proteins between 4RNAi and WT controls.

