

Supplementary Data

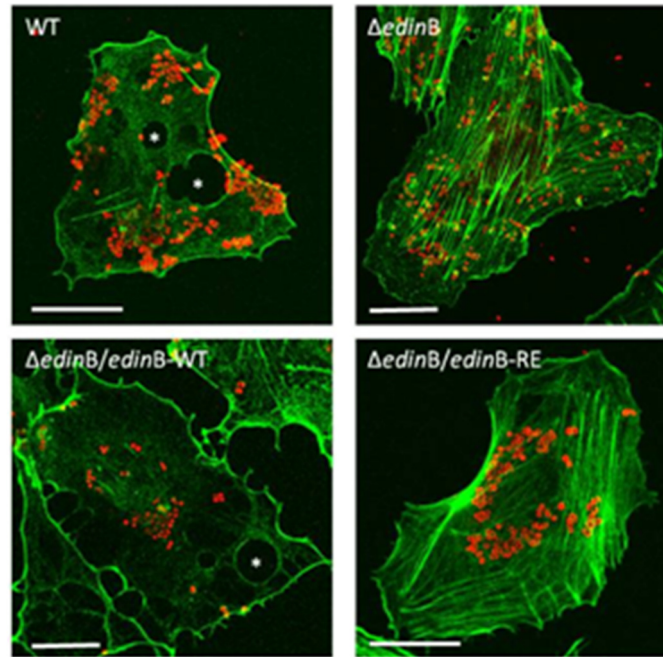


Figure S1. ST80 expressing EDIN induces transcellular macroapertures. HUVECs were infected 2 h at a MOI of 100 with the wild-type strain ST80 *SCCmecIV* PVL + MRSA (ST80), the isogenic strain deleted from *edinB* ($\Delta edinB$) and the $\Delta edinB$ strain complemented with expression plasmids encoding EDIN WT ($\Delta edinB/edinB$ -WT) or the catalytically inactive mutant R185E ($\Delta edinB/edinB$ -RE). Visualization of the actin cytoskeleton with FITC-conjugated phalloidin (green) and bacteria using a rabbit serum anti-*S. aureus* and Texas Red-conjugated anti-rabbit IgG (red). Stars indicate macroaperture location. Bars = 10 μ m.

Table S1. Primers used in this study.

Primer Names	Primer Sequences
edin1117	5'-GGAGGATCCGAGGAAAATATAATTTACCGATAGG-3'
edin2165	5'-CTCCTCGAGCATATTTAAATTCATCTCCTATGATA-3'
edin2872	5'-CTCCTCGAGTAACTGCTGTAGTTTTTAAAAAATAAG-3'
edin3795	5'-GGAGGATCCAACCTATATGAGAAATTTTTGGATATTTTC-3'
edinB-F	5'-GGGGATCCATGAAAGATACAATTGTAATAATTTCTATCAGCATTTCCTTGTG-3'
edinB-R	5'-GGCTGCAGTTATTTTTTAAAAACTACAGCAGTTATAATTATCTTTCTTTTG-3'
edinB-1	5'-GACTAGTTGAAGCTACTAAATGGGG-3'
edinB-2	5'-CAGCATATTCTGTCCCTCTAGG-3'
edin1099	5'-GAGTTAGTTGGTATTCATGTTGG-3'
Kcr4	5'-CTATCGCCTTCTTGACG-3'
Kcr3	5'-CGTTTCTGCGGACTGG-3'
edin3893	5'-CAGTAAAATGCATTTATTCGGTGG-3'

Restriction sites are underlined.