

Supplementary Materials: Biosorption of B-aflatoxins Using Biomasses Obtained from Formosa Firethorn [*Pyracantha koidzumii* (Hayata) Rehder]

Rosa Adriana Ramales-Valderrama, Alma Vázquez-Durán and Abraham Méndez-Albores

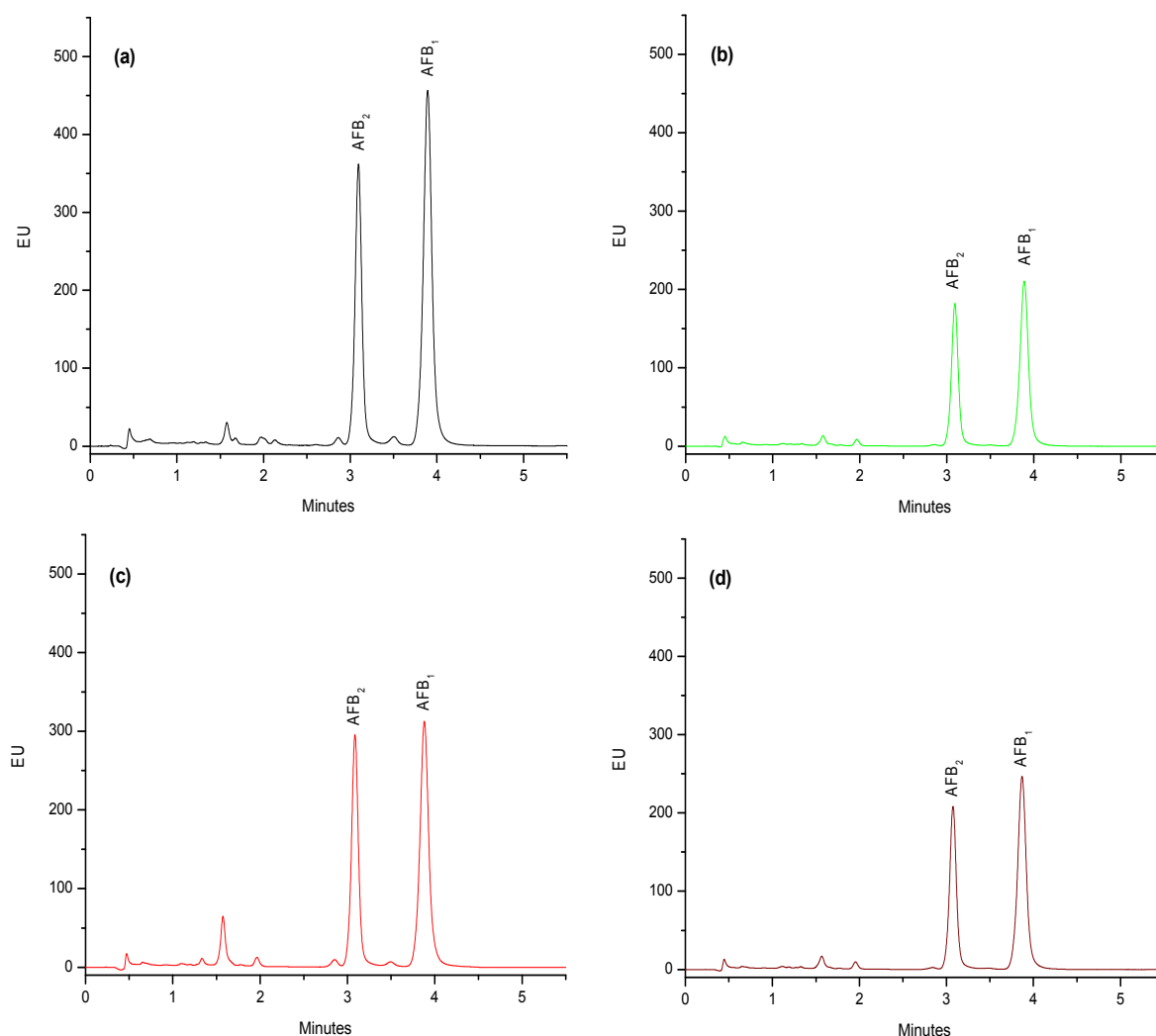


Figure S1. Representative UPLC profiles of biosorption using *P. koidzumii* biomasses at 6 h incubation. (a) samples spiked with 100 ng/mL of B-aflatoxin standards; (b) samples after the biosorption with leaves biomass; (c) samples after the biosorption with berries biomass; (d) samples after the biosorption with the mixture of leaves/berries biomass. The R_t values for AFB₂ and AFB₁ were 3.09 and 3.89 min, respectively.