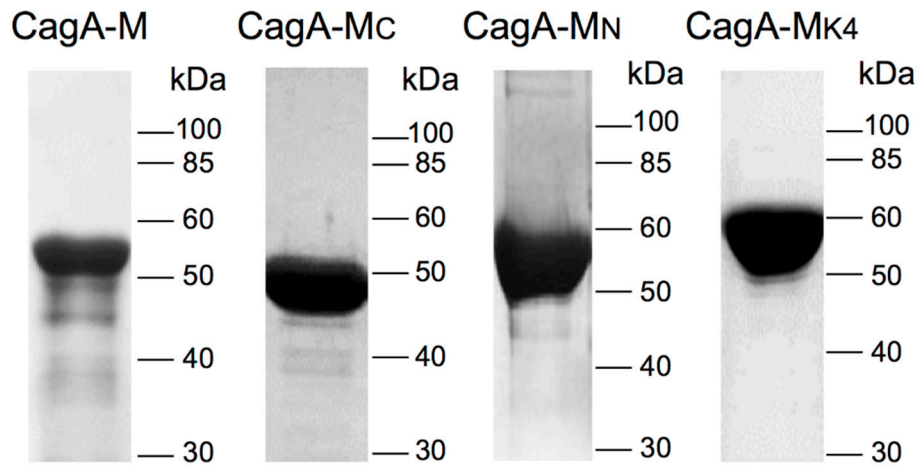


# Supplementary Materials: The Middle Fragment of *Helicobacter pylori* CagA Induces Actin Rearrangement and Triggers Its Own Uptake into Gastric Epithelial Cells

Abolghasem Tohidpour <sup>1</sup>, Rebecca J. Gorrell<sup>1,2</sup>, Anna Roujeinikova <sup>1,2,\*</sup> and Terry Kwok <sup>1,2,\*</sup>



**Figure S1.** Coomassie Blue-stained 12% SDS-PAGE gels of the recombinant CagA fragments used in this study. Molecular weight markers (kDa) are as indicated on the right of each panel. Lane 1, CagA-M (a.a 257-880); Lane 2, CagA-Mc (a.a 267-807); Lane 3, CagA-MN (a.a 257-807); Lane 4, CagA-Mk4 (a.a 257-880).