

Supplementary Materials

Zirconia-Toughened Alumina (ZTA) Nanoceramics with A Gradient Microstructure: A Comparative Study of ZTA Ceramics with Fibrous and Granular Morphology

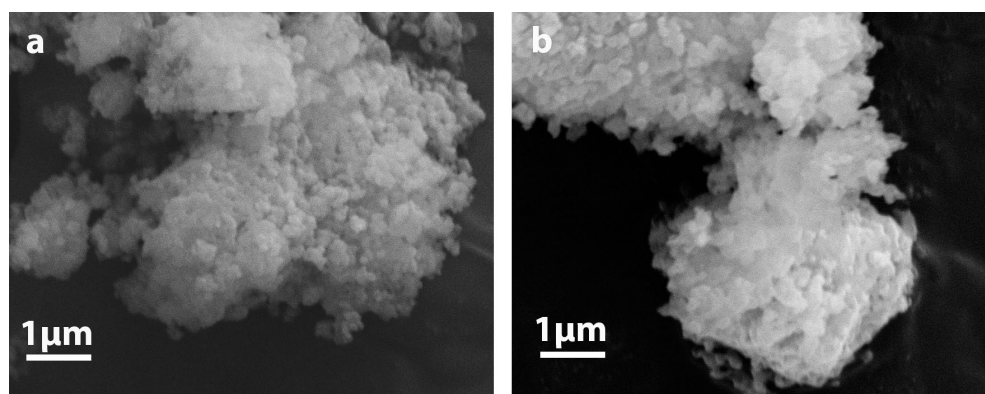


Figure S1. Morphology of the granular Y-ZTA (a) and Ce-ZTA (b) composite ceramics.

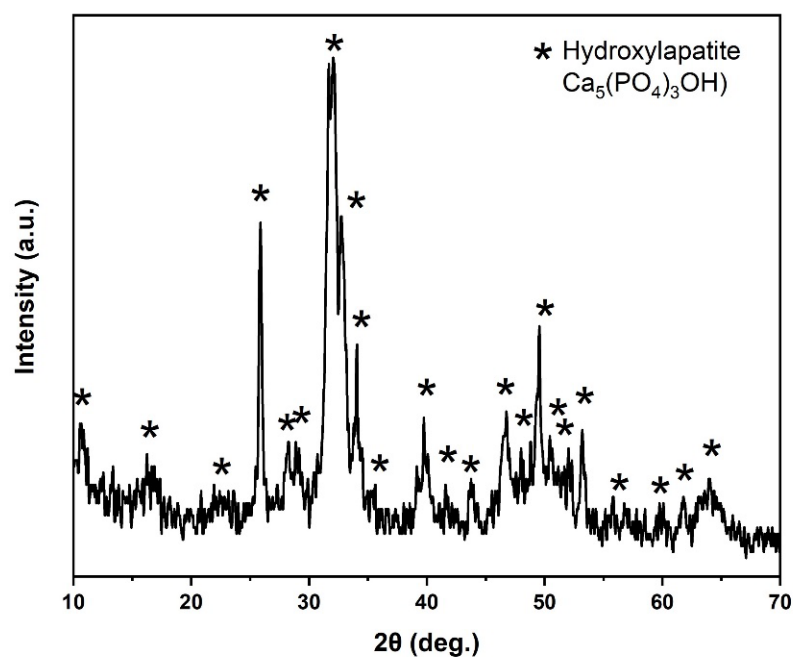


Figure S2. Phase composition and structure of HAp.

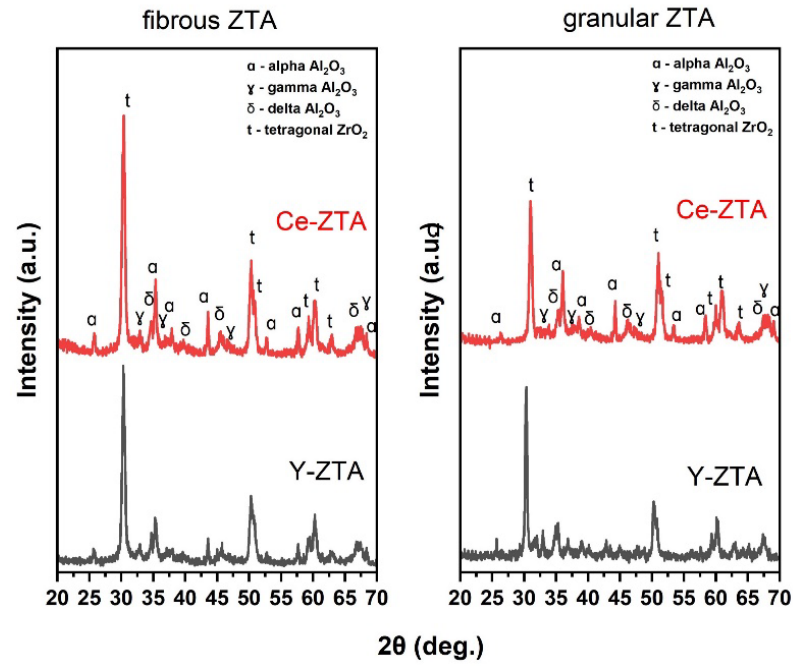


Figure S3. Phase composition of fibrous and granular reference ZTA samples.