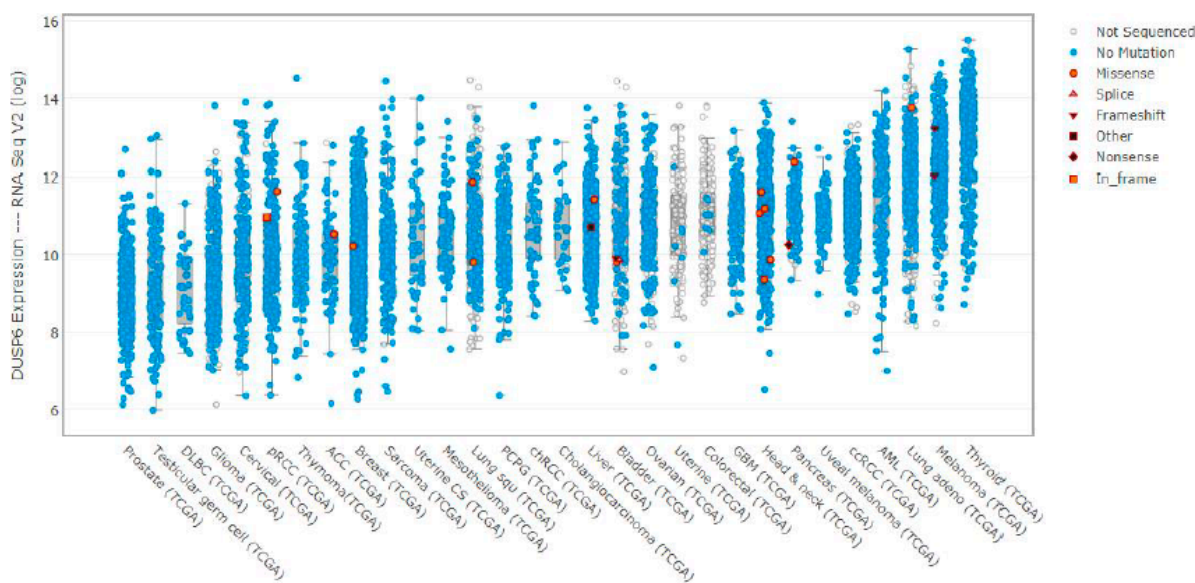


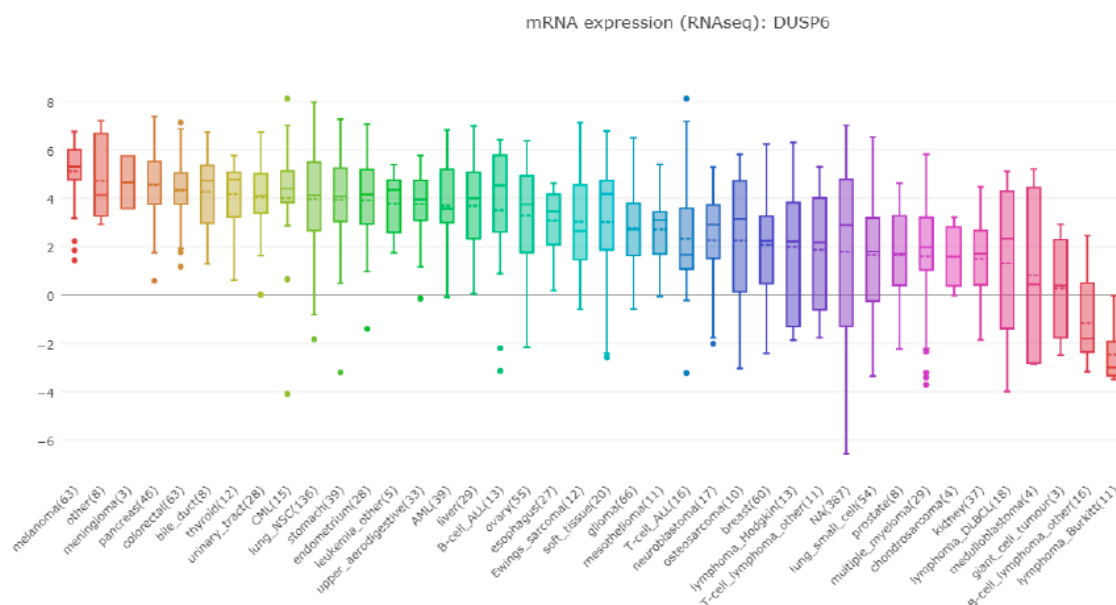
# ATM Dependent DUSP6 Modulation of p53 Involved in Synergistic Targeting of MAPK and p53 Pathways with Trametinib and MDM2 Inhibitors in Cutaneous Melanoma

Chiao-En Wu, Tsin Shue Koay, Arman Esfandiari, Yi-Hsuan Ho, Penny Lovat and John Lunec

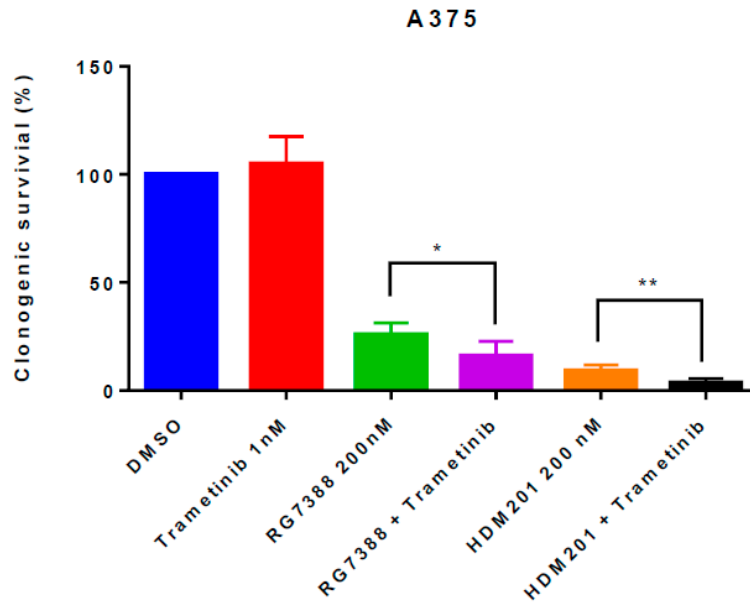
A



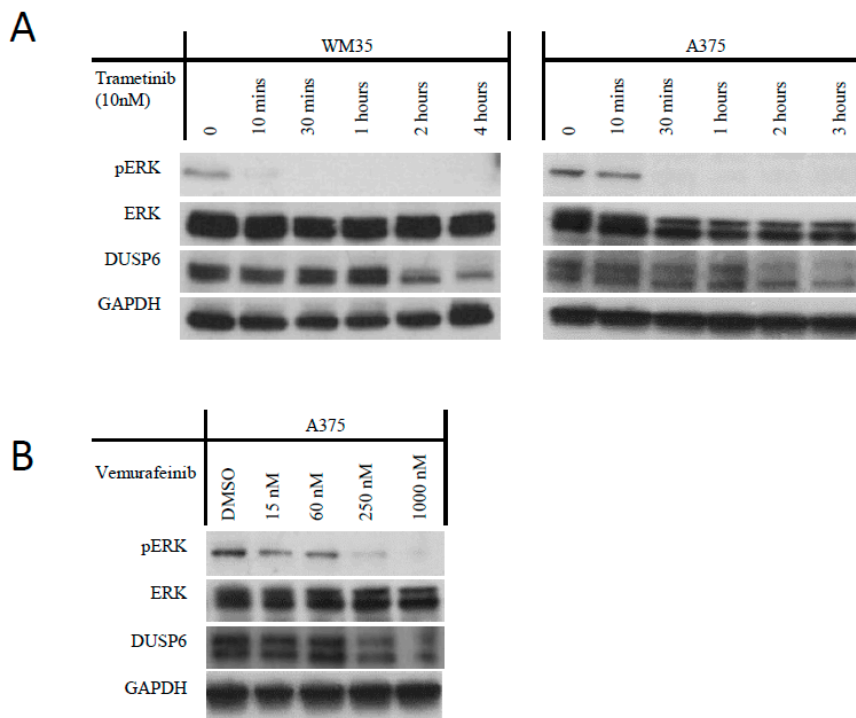
B



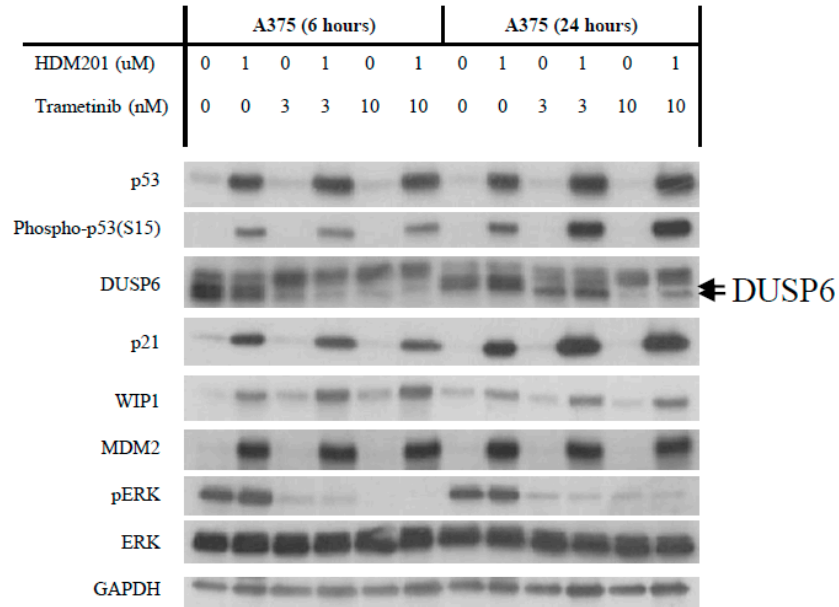
**Figure S1.** *DUSP6* mRNA expression in different cancer types. *DUSP6* mRNA expression in cBioPortal (A) and the Cancer Cell Line Encyclopaedia (CCLE) database (B).



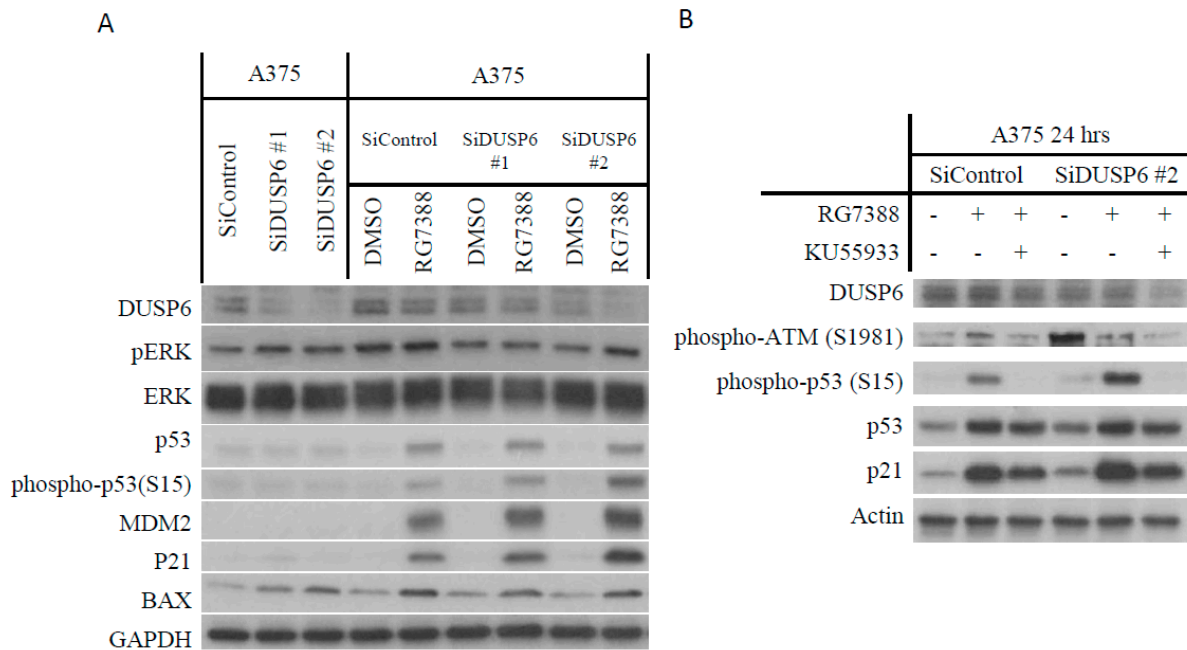
**Figure S2.** Clonogenic survival of A375 treated with trametinib, RG7388 and HDM201 for 72 hours. \*,  $p < 0.05$ ; \*\*,  $p < 0.01$



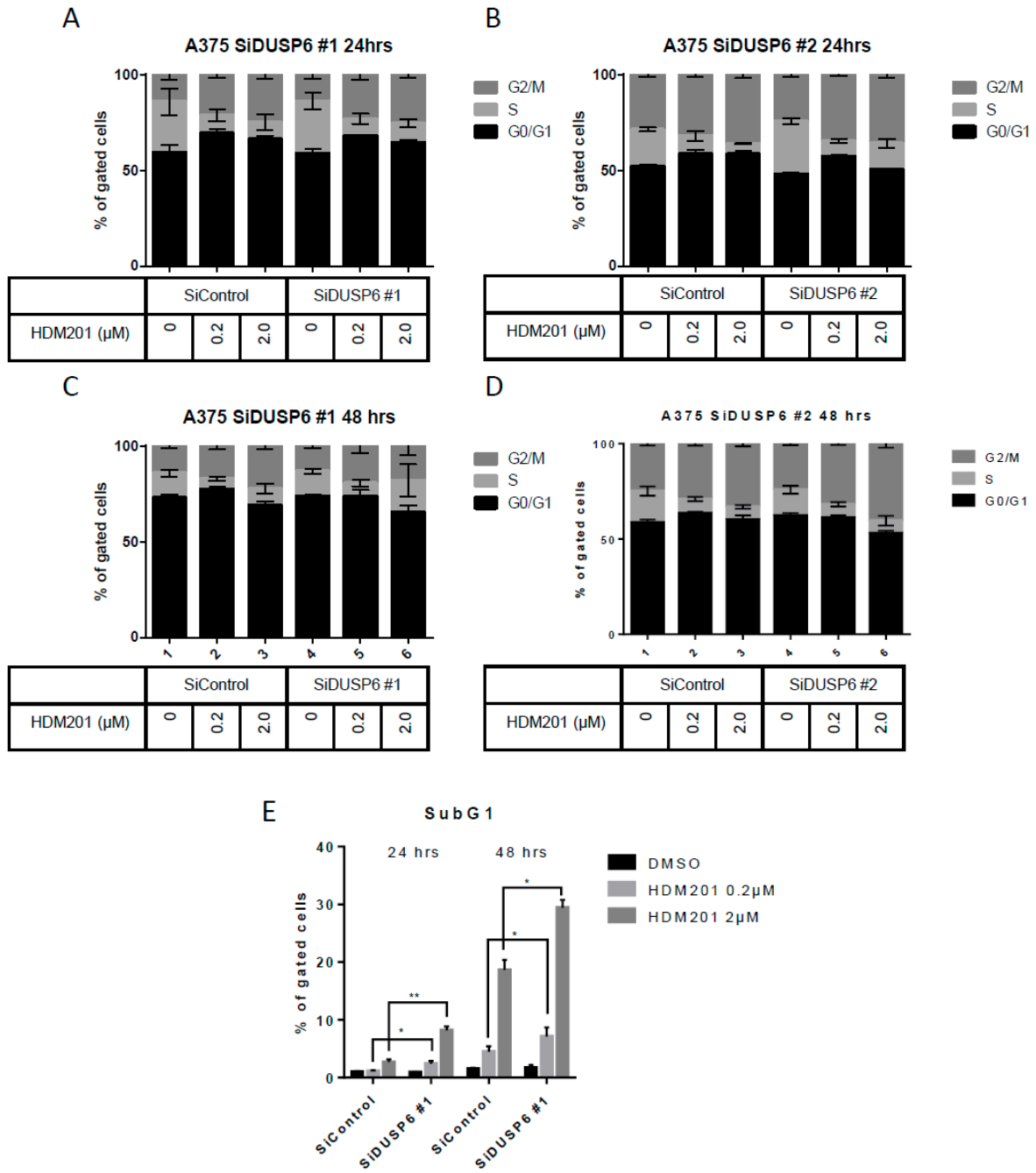
**Figure S3.** Immunoblotting of A375 and WM35 treated with trametinib or vemurafenib. (A) Immunoblotting of WM35 and A375 cells treated with 10nM trametinib for indicated times. (B) Immunoblotting of A375 cells treated with vemurafenib for 3 hours.



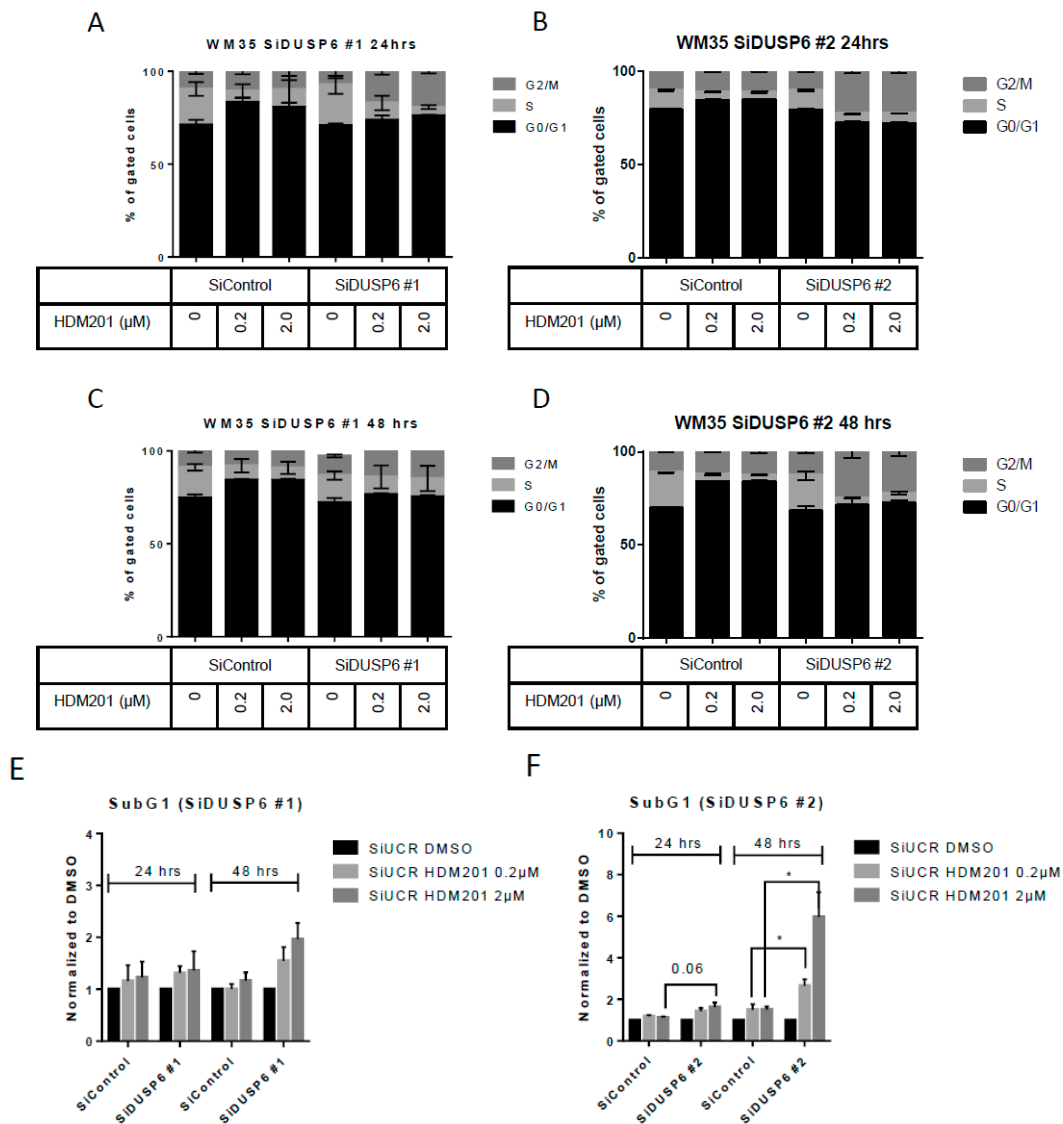
**Figure S4.** Immunoblotting of A375 cells treated with trametinib, HDM201, or combinations of the two compounds for 6 and 24 hours.



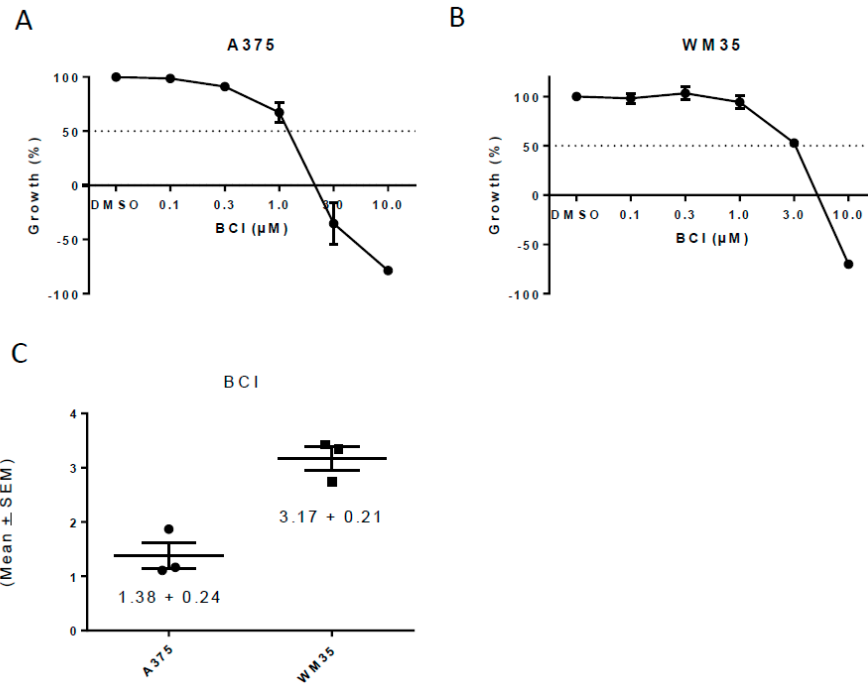
**Figure S5.** Immunoblotting of A375 after DUSP6 siRNA knockdown, followed by 200 nM RG7388 ± 10µM KU55933. (A) Immunoblotting of A375 after 24-hour DUSP6 siRNA knockdown, followed by 200nM RG7388 for 24 hours. (B) Immunoblotting of A375 after 24-hour DUSP6 siRNA knockdown, followed by 200nM RG7388 ± 10µM KU55933 24hr treatment. hrs, hours.



**Figure S6.** Cell cycle distribution (A–D) and Sub-G1 phase (E) of A375 cells after treatment with two siRNA against DUSP6 for 24 hours, followed by HDM201 addition for 24 and 48 hours. hrs, hours; \*,  $p < 0.05$ ; \*\*,  $p < 0.01$ .



**Figure S7.** Cell cycle distribution (A–D) and Sub-G1 phase (E,F) of WM35 cells after treatment with two siRNA against DUSP6 for 24 hours, followed by HDM201 addition for 24 and 48 hours. hrs, hours; \*,  $p < 0.05$ ; \*\*,  $p < 0.01$ .



**Figure S8.** Growth inhibition of A375 and WM35 cells treated with the BCI DUSP6 inhibitor. (A,B) Growth inhibition of A375 and WM35 cells treated with the BCI for 72 hours. (C) Summary of  $\text{GI}_{50}$  values for BCI induced growth inhibition of A375 and WM35 cells.



© 2018 by the authors. Licensee MDPI, Basel, Switzerland. This article is an open access article distributed under the terms and conditions of the Creative Commons Attribution (CC BY) license (<http://creativecommons.org/licenses/by/4.0/>).