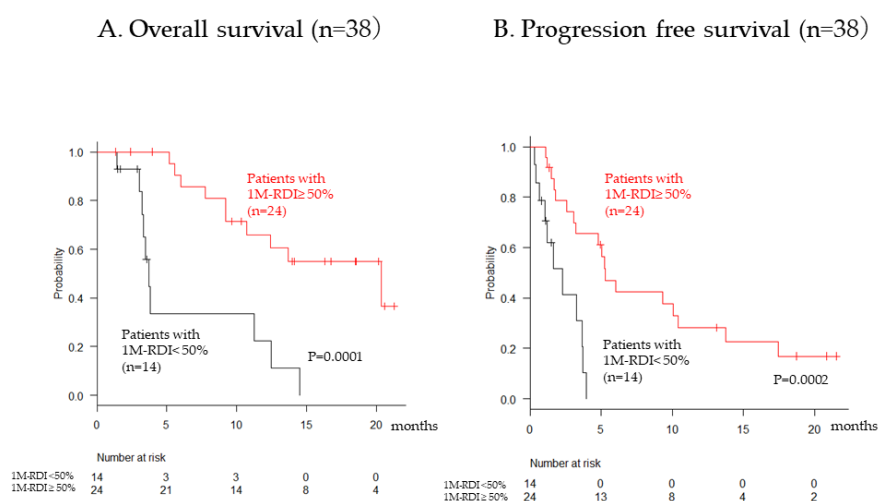


Article

# Sorafenib-Regorafenib Sequential Therapy in Japanese Patients with Unresectable Hepatocellular Carcinoma—Relative Dose Intensity and Post-Regorafenib Therapies in Real World Practice

Wan Wang <sup>1,†</sup>, Kaoru Tsuchiya <sup>1,†</sup>, Masayuki Kurosaki <sup>1</sup>, Yutaka Yasui <sup>1</sup>, Kento Inada <sup>1,2</sup> and Sakura Kirino <sup>1,2</sup>, Koji Yamashita <sup>1,3</sup>, Shuhei Sekiguchi <sup>1,2</sup>, Yuka Hayakawa <sup>1,2</sup>, Leona Osawa <sup>1,3</sup>, Mao Okada<sup>1</sup>, Mayu Higuchi <sup>1,3</sup>, Kenta Takaura <sup>1</sup>, Chiaki Maeyashiki <sup>1,2</sup>, Shun Kaneko <sup>1,2</sup>, Nobuharu Tamaki <sup>1,3</sup>, Hiroyuki Nakanishi <sup>1</sup>, Jun Itakura <sup>1</sup>, Yuka Takahashi <sup>1</sup>, Yasuhiro Asahina <sup>2</sup>, Nobuyuki Enomoto <sup>3</sup>, Namiki Izumi <sup>1,\*</sup>



**Supplementary Figure S1.** Comparison between patients with 1M-RDI  $\geq 50\%$  and  $< 50\%$  in overall survival (A) and progression-free survival (B).