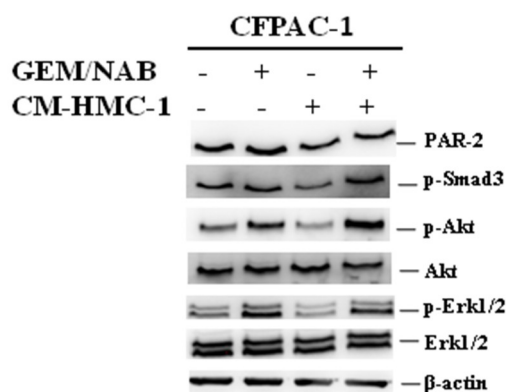


# Supplementary Materials: CAFs and TGF- $\beta$ Signaling Activation by Mast Cells Contribute to Resistance to Gemcitabine/Nabpaclitaxel in Pancreatic Cancer

Letizia Porcelli, Rosa Maria Iacobazzi, Roberta Di Fonte, Simona Serrati, Angelica Intini, Antonio Giovanni Solimando, Oronzo Brunetti, Angela Calabrese, Francesco Leonetti, Amalia Azzariti and Nicola Silvestris



**Figure S1:** Signalling cascade activated in response to CM-HMC-1 in GEM/NAB treated and untreated CFPAC-1 cells. The treatment with GEM/NAB and GEM/NAB + CM-HMC-1 induced the activation of SMAD pathway on CFPAC-1 with an increase of 15% and 40% of p-Smad3 with GEM/NAB and GEM/NAB + CM-HMC-1, respectively, versus each control. p-Erk1/2 and p-Akt were increased by GEM/NAB and GEM/NAB + CM-HMC-1 treatments; PAR-2 was increased of 20% on GEM/NAB treated cells versus control and not affected by GEM/NAB + CM-HMC-1 versus control.



© 2019 by the authors. Licensee MDPI, Basel, Switzerland. This article is an open access article distributed under the terms and conditions of the Creative Commons Attribution (CC BY) license (<http://creativecommons.org/licenses/by/4.0/>).