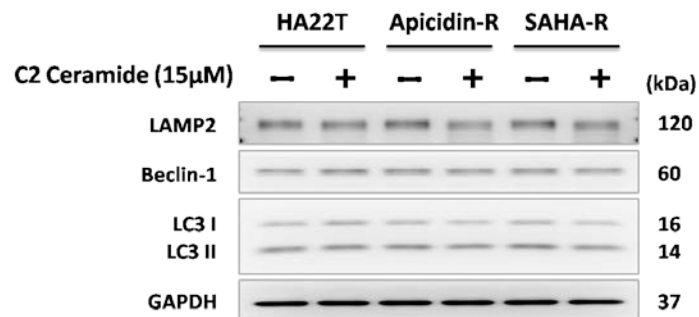


## Supplementary Materials

## Inhibition of protein phosphatase 1 stimulates noncanonical ER stress eIF2 $\alpha$ activation to enhance fisetin-induced chemosensitivity in HDAC inhibitor-resistant hepatocellular carcinoma cells

Yi-Sheng Liu, Yu-Chun, Chang, Wei-Wen Kuo, Ming-Cheng Chen, Hsi-Hsien Hsu, Chuan-Chou Tu, Yu-Lan Yeh, Vijaya Padma Viswanadha, Po-Hsiang Liao and Chih-Yang Huang



**Figure S1.** To check whether treated with C2 ceramide for 24 h affect autophagy activation in liver cancer cells. After treated with C2 ceramide 15  $\mu$ M cannot activate autophagy in liver cancer cells determined by western blotting.



© 2019 by the authors. Licensee MDPI, Basel, Switzerland. This article is an open access article distributed under the terms and conditions of the Creative Commons Attribution (CC BY) license (<http://creativecommons.org/licenses/by/4.0/>).