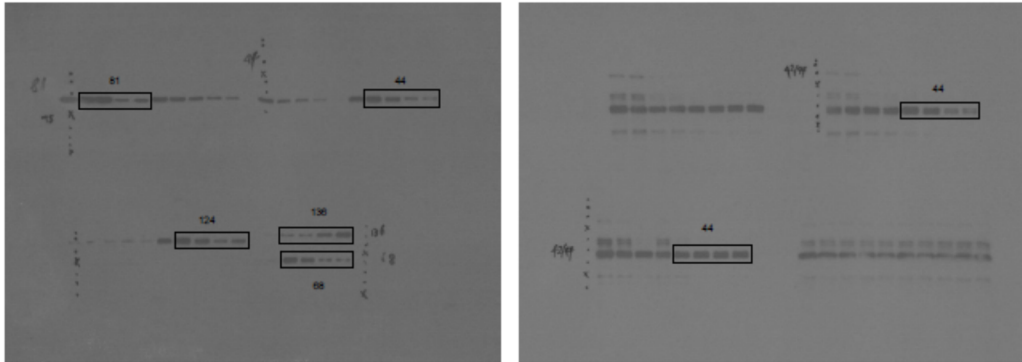
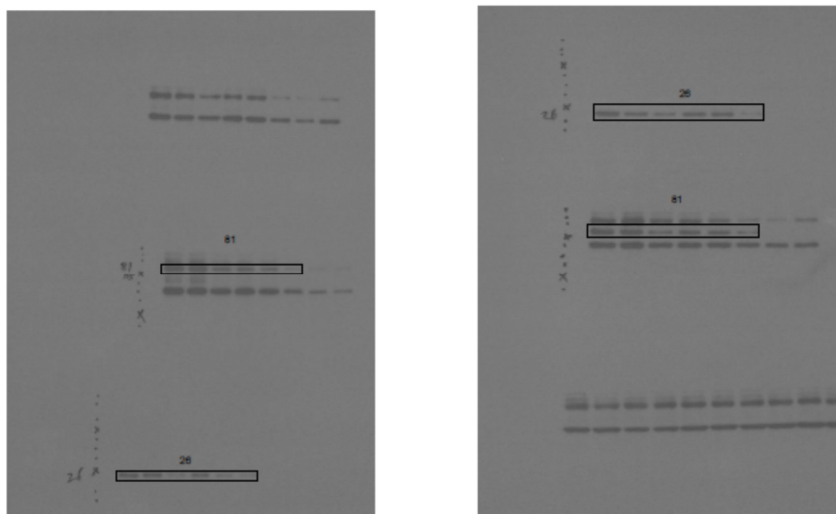


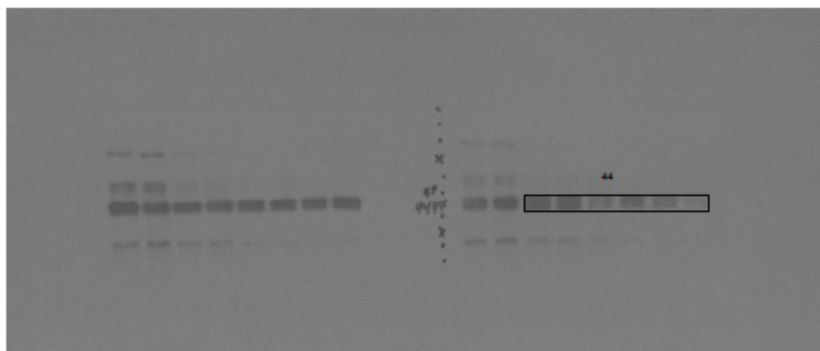
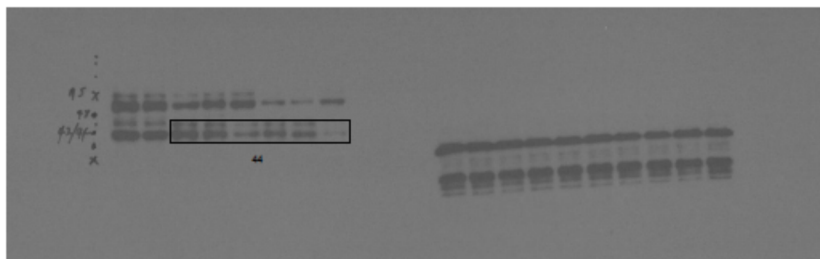
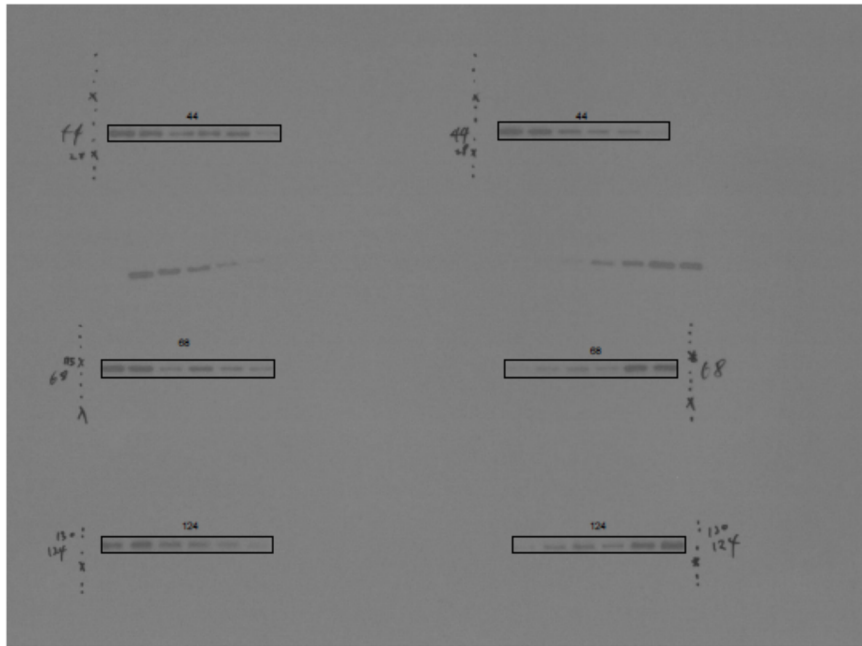
Uncropped images of the immunoblot analysis.

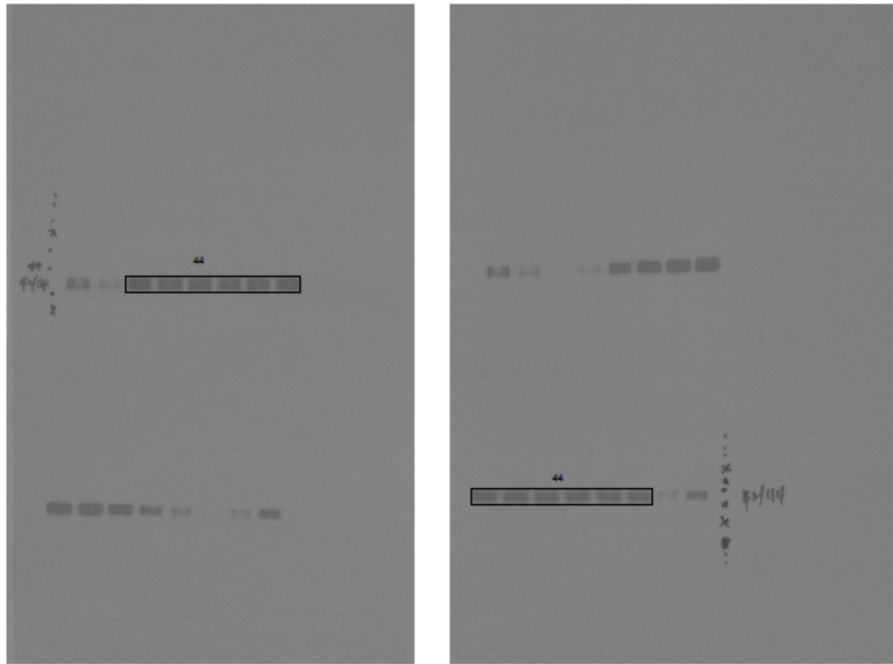
Supplementary Figure 1B: Immunoblot analysis with antibody- related to marker of the FGFR and EMT on the GSPY and GSPO cells. Equal amounts of protein (20 μ g) were separated on 8–10% sodium dodecyl sulfate-polyacrylamide gels.



Supplementary Figure 3A: Immunoblot analysis with antibody- related to marker of the FGFR and EMT on the GSPY and GSPO cells after treatment of a multikinase inhibitor, sorafenib and lenvatinib. Equal amounts of protein (20 μ g) were separated on 8–10% sodium dodecyl sulfate-polyacrylamide gels.







Supplementary Figure 5A: Immunoblot analysis with antibody- related to marker of the FGFR and EMT on the GSPY and GSPO xenograft models after treatment of a multikinase inhibitor, sorafenib and lenvatinib. Equal amounts of protein (20 μ g) were separated on 8–10% sodium dodecyl sulfate-polyacrylamide gels.

