

## Supplementary Materials: Preoperative Serum Thyroglobulin and Its Correlation with the Burden and Extent of Differentiated Thyroid Cancer

Hosu Kim, So Young Park, Jun-Ho Choe, Jee Soo Kim, Soo Yeon Hahn, Sun Wook Kim, Jae Hoon Chung, Jaehoon Jung and Tae Hyuk Kim

**Table S1.** Tumor burden and cancer prognosis by preoperative serum thyroglobulin levels in patients with papillary thyroid carcinoma.

Thyroglobulin deciles	Preoperative Thyroglobulin Levels (ng/mL)	n	Primary tumor Diameter (cm)		Number of LNM		Recurrence		DSD	
			mean	95% CI	mean	95% CI	n	%	n	%
1	0.1–2.2	386	0.81	0.76;0.86	1.44	1.14;1.73	5	1.3	0	0
2	2.3–4.0	395	0.76	0.71;0.80	1.16	0.93;1.40	6	1.5	1	0.3
3	4.1–5.6	403	0.77	0.73;0.81	1.33	1.03;1.63	6	1.5	0	0
4	5.7–7.5	401	0.82	0.77;0.87	1.34	1.08;1.61	7	1.7	0	0
5	7.6–9.8	404	0.86	0.80;0.92	1.67	1.37;1.96	8	2	0	0
6	9.9–13.0	407	0.98	0.92;1.04	2.02	1.66;2.38	12	2.9	0	0
7	13.1–17.8	402	1	0.94;1.06	2.06	1.73;2.40	13	3.2	0	0
8	17.9–26.7	401	1.16	1.08;1.24	2.27	1.89;2.64	16	4	0	0
9	26.8–56.2	398	1.31	1.22;1.40	3.37	2.83;3.87	21	5.3	1	0.8
10	56.3–42680	382	2	1.86;2.14	5.74	4.93;6.54	43	11.3	3	0.8
	total	3979	1.04	1.02;1.07	2.22	2.09;2.36	137	3.4	5	0.1

Thyroglobulin deciles: the deciles of patients with different levels of preoperative thyroglobulin levels (levels increase from 1 to 10). LNM—lymph node metastases, DSD—disease-specific death, CI—confidence interval.

**Table S2.** Tumor burden and cancer prognosis by preoperative serum thyroglobulin levels in patients with follicular thyroid carcinoma.

Thyroglobulin Deciles	Preoperative Thyroglobulin Levels (ng/mL)	n	Primary tumor Diameter (cm)		Number of LNM		Recurrence		DSD	
			mean	95% CI	mean	95% CI	n	%	n	%
1	0.1–2.2	1	-	-	-	-	0	0	0	0
2	2.3–4.0	4	0.88	0.48;1.27	0.75	-0.05;1.55	0	0	0	0
3	4.1–5.6	4	1.03	0.22;1.83	0.75	-0.77;2.27	0	0	0	0
4	5.7–7.5	5	0.88	-0.25;2.01	1.20	-1.49;3.89	0	0	0	0
5	7.6–9.8	0	-	-	-	-	0	0	0	0
6	9.9–13.0	1	-	-	-	-	0	0	0	0
7	13.1–17.8	3	1.10	-0.84;3.04	1.33	-4.40;7.07	0	0	0	0
8	17.9–26.7	3	0.87	-0.17;1.90	-	-	0	0	0	0
9	26.8–56.2	6	2.15	1.08;3.22	0.17	-0.26;0.60	0	0	0	0
10	56.3–42680	23	3.27	2.69;3.86	1.26	-0.23;2.75	1	4.3	3	13.0
	total	50	2.14	1.70;2.57	0.92	0.21;1.63	1	2.0	3	6.0

Thyroglobulin deciles: the deciles of patients with different levels of preoperative thyroglobulin levels (levels increase from 1 to 10). LNM—lymph node metastases, DSD—disease-specific death, CI—confidence interval.

**Table S3.** Tumor extent by preoperative serum thyroglobulin levels in patients with papillary thyroid carcinoma.

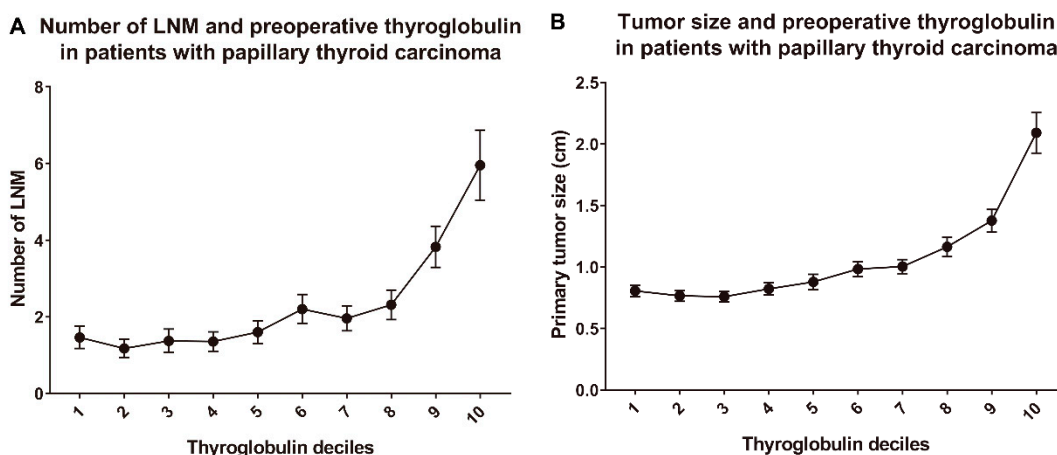
Thyroglobulin Deciles	Preoperative Thyroglobulin Levels (ng/mL)	n	Central LNM		Ipsilateral lateral LNM		Contralateral Lateral LNM		Distant Metastasis	
			n	%	n	%	n	%	n	%
1	0.1–2.2	386	135	35.0	21	5.4	5	1.3	0	0.0
2	2.3–4.0	395	142	35.9	22	5.6	1	0.3	1	0.3
3	4.1–5.6	403	148	36.7	21	5.2	5	1.2	0	0.0
4	5.7–7.5	401	154	38.4	16	4.0	4	1.0	1	0.2
5	7.6–9.8	404	160	39.6	33	8.2	4	1.0	2	0.5
6	9.9–13.0	407	165	40.5	31	7.6	5	1.2	0	0.0
7	13.1–17.8	402	142	35.3	36	9.0	13	3.2	1	0.2
8	17.9–26.7	401	157	39.2	41	10.2	11	2.7	1	0.2
9	26.8–56.2	398	157	39.4	53	13.3	20	5.0	3	0.8
10	56.3–42680	382	143	37.4	58	15.2	33	8.6	25	6.5
total		3979	1503	37.8	332	8.3	101	2.5	34	0.9

Thyroglobulin deciles: the deciles of patients with different levels of preoperative thyroglobulin levels (levels increase from 1 to 10). LNM—lymph node metastases.

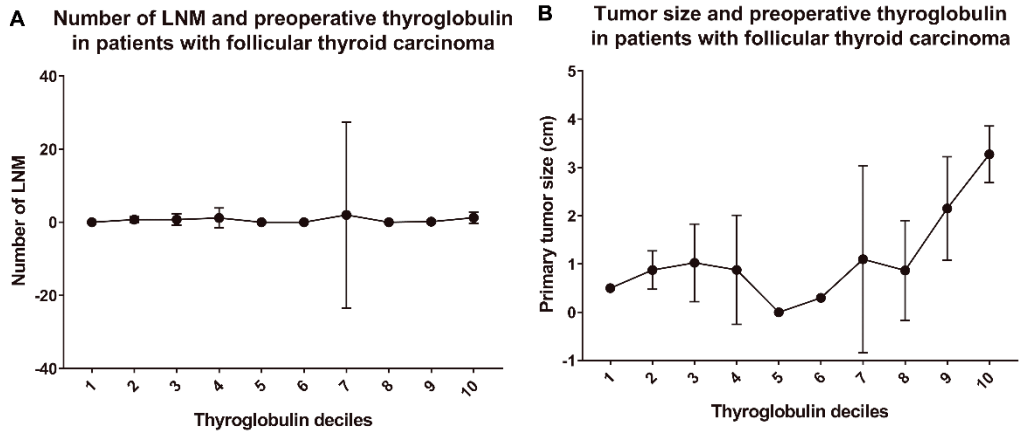
**Table S4.** Tumor extent by preoperative serum thyroglobulin levels in patients with follicular thyroid carcinoma.

Thyroglobulin Deciles	Preoperative Thyroglobulin Levels (ng/mL)	n	Central LNM		Ipsilateral Lateral LNM		Contralateral Lateral LNM		Distant Metastasis	
			n	%	n	%	n	%	n	%
1	0.1–2.2	1	0	0	0	0	0	0	0	0
2	2.3–4.0	4	3	75.0	0	0	0	0	0	0
3	4.1–5.6	4	1	25.0	1	25.0	0	0	0	0
4	5.7–7.5	5	2	40.0	0	0	0	0	0	0
5	7.6–9.8	0	0	0	0	0	0	0	0	0
6	9.9–13.0	1	0	0	0	0	0	0	0	0
7	13.1–17.8	3	2	66.7	0	0	0	0	0	0
8	17.9–26.7	3	0	0	0	0	0	0	0	0
9	26.8–56.2	6	1	16.7	0	0	0	0	0	0
10	56.3–42680	23	0	0	1	4.3	2	8.7	10	43.5
total		50	9	18.0	2	4.0	2	4.0	10	20.0

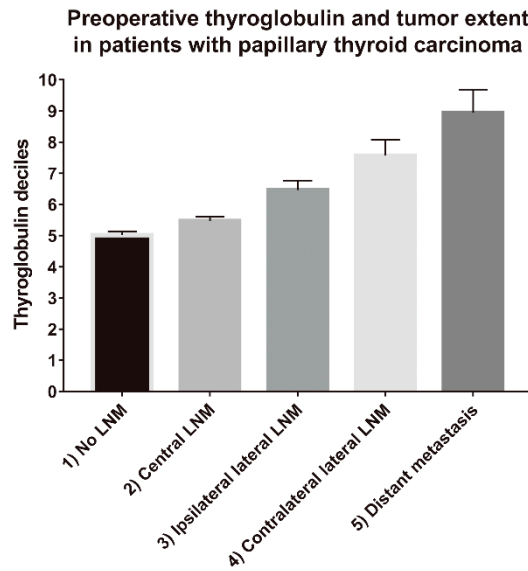
Thyroglobulin deciles: the deciles of patients with different levels of preoperative thyroglobulin levels (levels increase from 1 to 10). LNM—lymph node metastases.



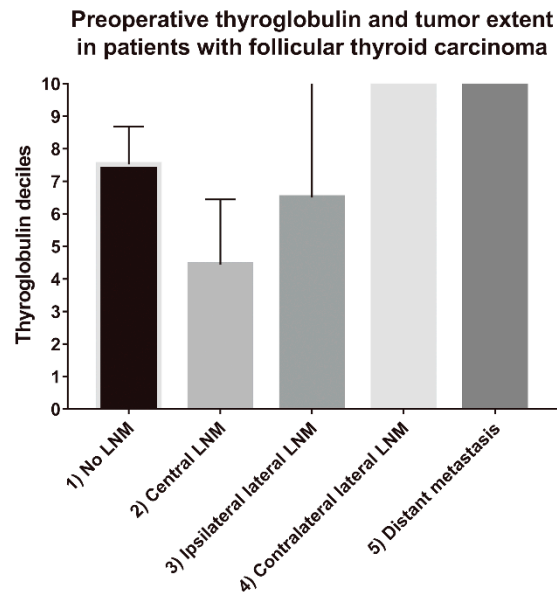
**Figure S1.** Correlation between tumor burden and preoperative thyroglobulin levels in patients with papillary thyroid carcinoma. (a) the number of LNM and (b) the size of the primary tumor.



**Figure S2.** Correlation between tumor burden and preoperative thyroglobulin levels in patients with follicular thyroid carcinoma. (a) the number of LNM and (b) the size of the primary tumor.



**Figure S3.** Correlation between tumor extent and preoperative thyroglobulin levels in patients with papillary thyroid carcinoma.



**Figure S4.** Correlation between tumor extent and preoperative thyroglobulin levels in patients with follicular thyroid carcinoma.



© 2020 by the authors. Licensee MDPI, Basel, Switzerland. This article is an open access article distributed under the terms and conditions of the Creative Commons Attribution (CC BY) license (<http://creativecommons.org/licenses/by/4.0/>).