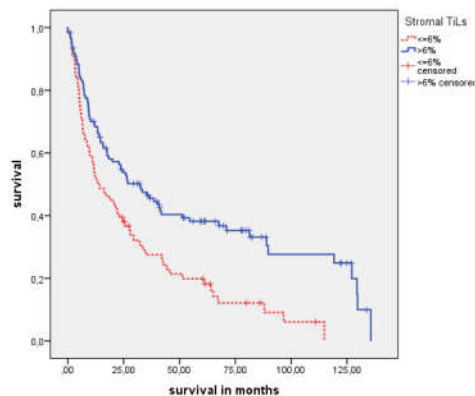


# Supplementary Materials: CCL2 Expression in Tumor Cells and Tumor-Infiltrating Immune Cells Shows Divergent Prognostic Potential for Bladder Cancer Patients Depending on Lymph Node Stage

Markus Eckstein, Elena Epple, Rudolf Jung, Katrin Weigelt, Verena Lieb, Danijel Sikic, Robert Stöhr, Carol Geppert, Veronika Weyerer, Simone Bertz, Astrid Kehlen, Arndt Hartmann, Bernd Wullich, Helge Taubert and Sven Wach

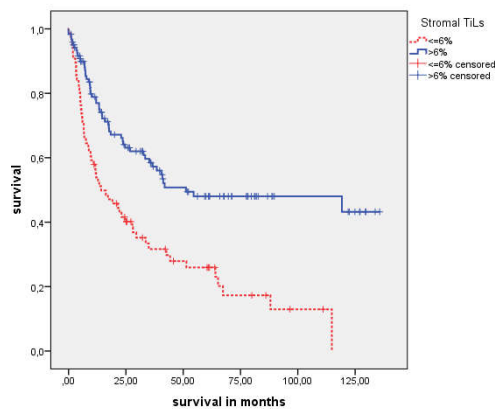
## All patients

OS



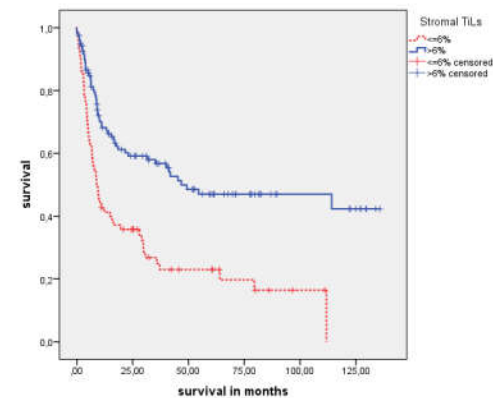
Number at risk						
CCL2 $\leq$ 6%	76	28	14	6	2	0
CCL2 $>$ 6%	122	61	38	22	10	6

DSS

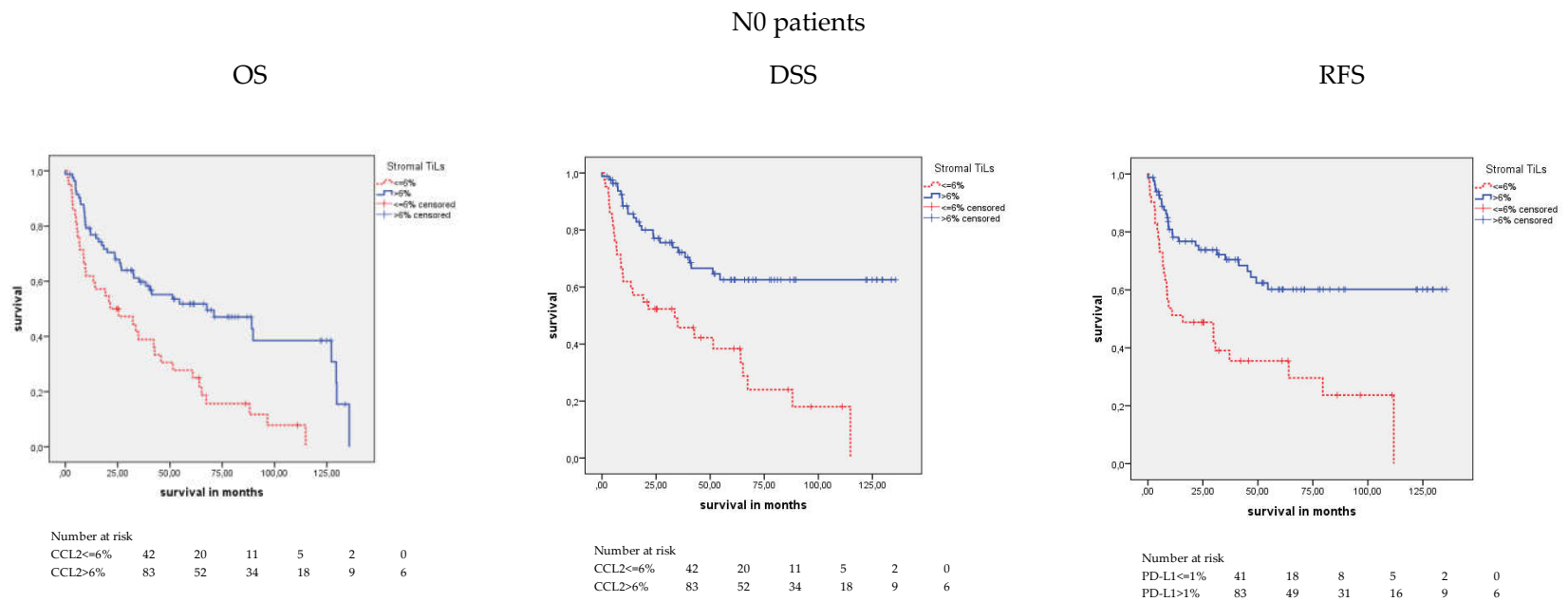


Number at risk						
CCL2 $\leq$ 6%	76	28	14	6	2	0
CCL2 $>$ 6%	122	61	38	22	10	6

RFS



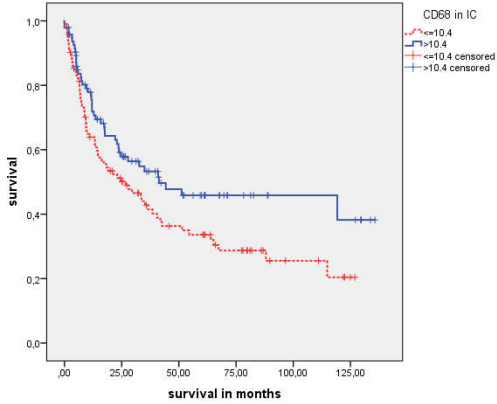
Number at risk						
CCL2 $\leq$ 6%	75	24	10	6	2	0
CCL2 $>$ 6%	122	56	35	20	10	6



**Figure S1.** Kaplan–Meier analysis: Association of TiLs and prognosis in all patients and in N0 patients.

### All patients

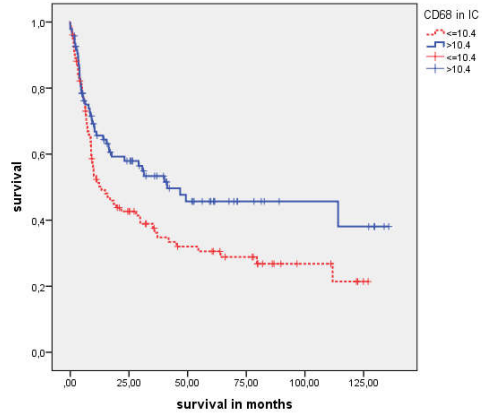
DSS



Number at risk

CD68<=10.4	103	45	27	17	6	1
CD68>10.4	95	44	25	11	6	5

RFS

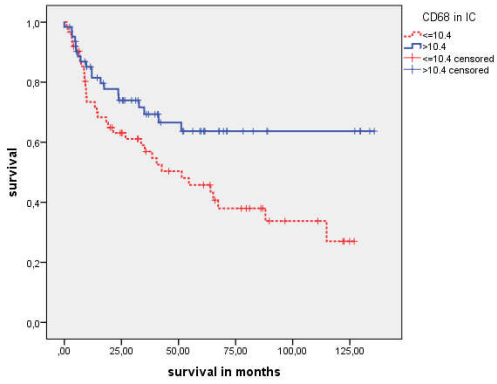


Number at risk

CD68<=10.4	102	37	22	16	6	1
CD68>10.4	95	43	23	10	6	5

### N0 patients

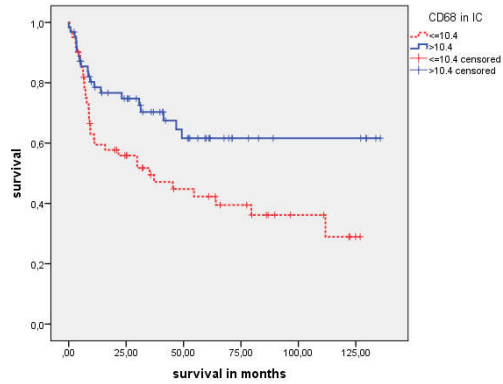
DSS



Number at risk

CD68<=10.4	62	34	22	14	6	1
CD68>10.4	63	38	23	9	5	5

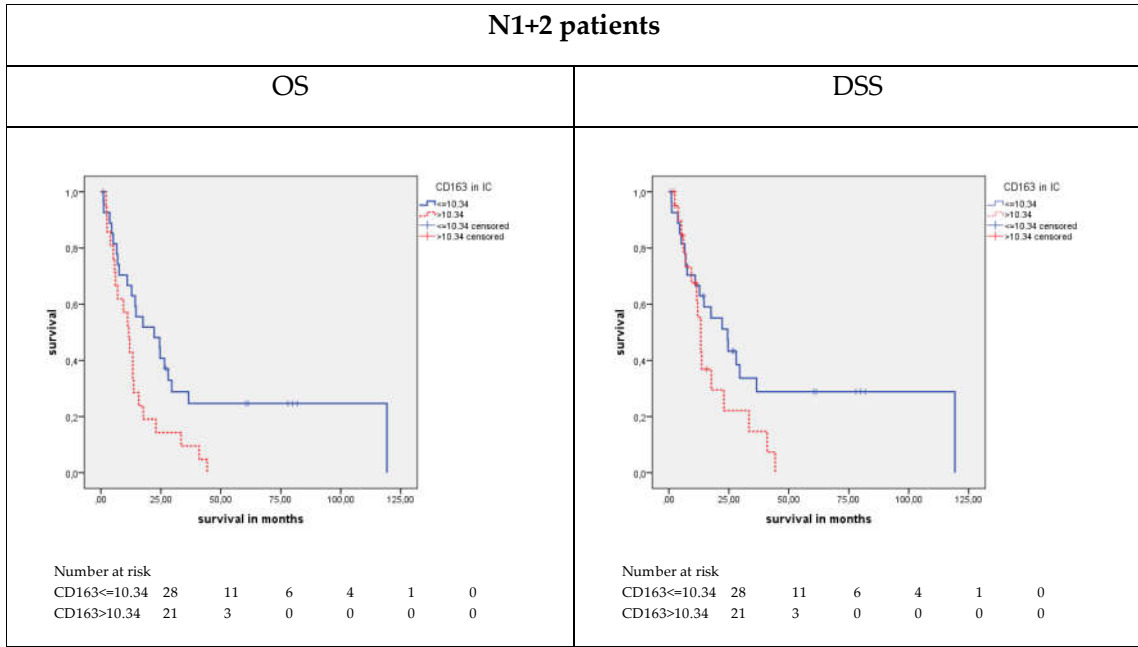
RFS



Number at risk

CD68<=10.4	61	29	18	13	6	1
CD68>10.4	63	38	21	8	5	5

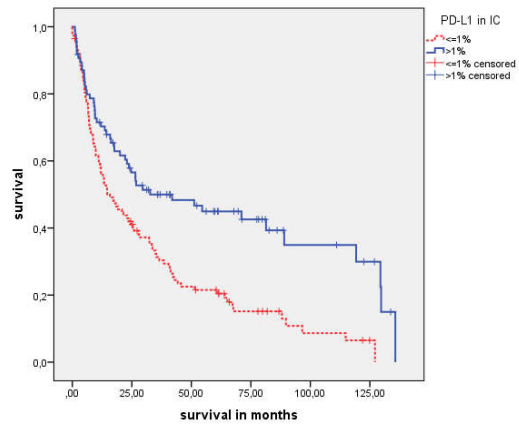
**Figure S2.** Kaplan–Meier analysis: Association of macrophages (CD68) and prognosis in all patients and in N0 patients.



**Figure S3.** Kaplan–Meier analysis: Association of M2-like macrophages (CD163) and OS/DSS in N1+2 patients.

## All patients

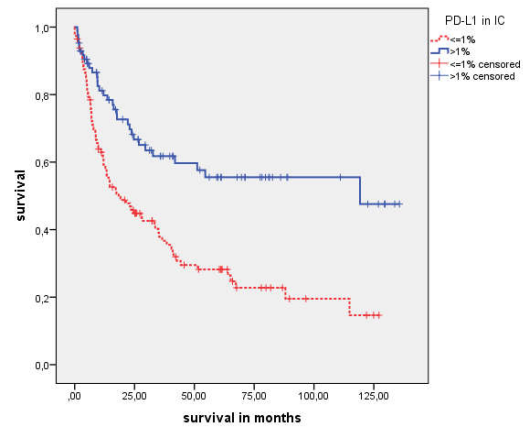
OS



Number at risk

PD-L1<=1%	113	45	23	11	4	1
PD-L1>1%	85	44	29	17	8	5

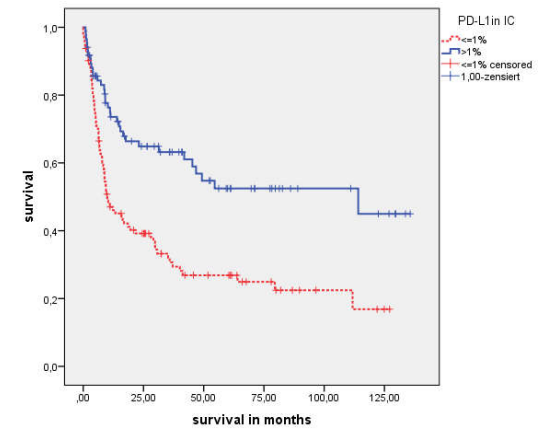
DSS



Number at risk

PD-L1<=1%	113	45	23	11	4	1
PD-L1>1%	85	44	29	17	8	5

RFS

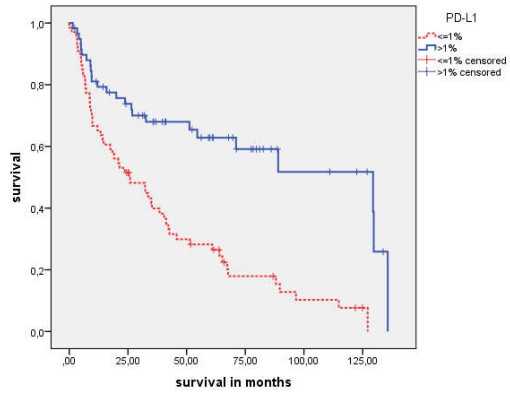


Number at risk

PD-L1<=1%	112	38	19	11	4	1
PD-L1>1%	85	42	26	15	8	5

N0 patients

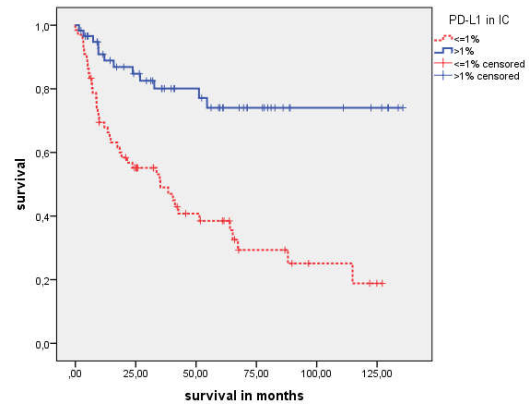
OS



Number at risk

PD-L1<=1%	66	33	18	8	4	1
PD-L1>1%	59	39	27	15	7	5

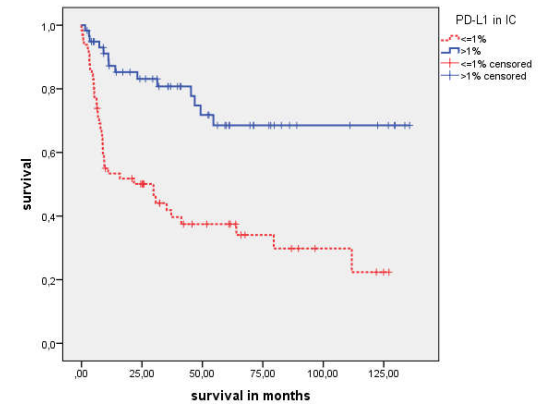
DSS



Number at risk

PD-L1<=1%	66	33	18	8	4	1
PD-L1>1%	59	39	27	15	7	5

RFS



Number at risk

PD-L1<=1%	65	29	15	8	4	1
PD-L1>1%	59	38	24	13	7	5

Figure S4. Kaplan-Meier analysis: Association of PD-L1 in IC with prognosis in all patients and in N0 patients.

**Table S1.** CCL2 expression in TCs and in ICs of muscle invasive BCa patients.

Cells	N	CCL2 Negative (in %)	CCL2 Positive (in %)
Tumor cells (TCs)	168	111 (66.1)	57 (33.9)
Immune cells (ICs)	168	98 (58.3)	70 (41.7)

**Table S2.** Spearman's bivariate correlation between CCL2 staining in TCs or ICs and clinicopathological/molecular parameters in BCa patients.

Parameter	CCL2 in TCs		CCL2 in ICs	
Gender	rs	-0.016	rs	0.004
	<i>p</i>	0.841	<i>p</i>	0.961
Age at cystectomy	rs	.240*	rs	0.005
	<i>p</i>	<b>0.002</b>	<i>p</i>	0.954
pT	rs	0.138	rs	-0.155*
	<i>p</i>	0.074	<i>p</i>	<b>0.045</b>
pN	rs	0.079	rs	-0.210*
	<i>p</i>	0.307	<i>p</i>	<b>0.006</b>
OS	rs	-.242*	rs	0.177*
	<i>p</i>	<b>0.002</b>	<i>p</i>	<b>0.022</b>
DSS	rs	-0.134	rs	0.344**
	<i>p</i>	0.084	<i>p</i>	<b>&lt;0.001</b>
time to recurrence	rs	-.199*	rs	0.081
	<i>p</i>	<b>0.010</b>	<i>p</i>	0.298
RFS	rs	-0.117	rs	0.353**
	<i>p</i>	0.130	<i>p</i>	<b>&lt;0.001</b>
CCL2 in ICs/TCs	rs	-0.068	rs	-0.068
	<i>p</i>	0.381	<i>p</i>	0.381
CK5	rs	-.172*	rs	0.201*
	<i>p</i>	<b>0.025</b>	<i>p</i>	<b>0.009</b>
GATA3	rs	-0.092	rs	0.125
	<i>p</i>	0.233	<i>p</i>	0.105
Stromal TILs	rs	-0.128	rs	0.559**
	<i>p</i>	0.096	<i>p</i>	<b>&lt;0.001</b>
CD3	rs	-0.105	rs	0.604**
	<i>p</i>	0.174	<i>p</i>	<b>&lt;0.001</b>
CD8	rs	-0.113	rs	0.591**
	<i>p</i>	0.144	<i>p</i>	<b>&lt;0.001</b>
CD68	rs	-0.137	rs	0.500**
	<i>p</i>	0.074	<i>p</i>	<b>&lt;0.001</b>
PD-L1 (SP263) in ICs	rs	-0.151	rs	0.541**
	<i>p</i>	0.051	<i>p</i>	<b>&lt;0.001</b>
PD-L1 (SP263) in TCs	rs	-0.097	rs	0.351**
	<i>p</i>	0.212	<i>p</i>	<b>&lt;0.001</b>
molecular subtypes	rs	0.017	rs	-0.336**
	<i>p</i>	0.819	<i>p</i>	<b>&lt;0.001</b>

Significant values are marked in bold. rs = correlation coefficient, *p* = *p*-value (2-sided), \**p* > 0.05, \*\**p* < 0.001.

**Table S3.** Cross Table: Correlation of CCL2 staining and TIL percentage.

CCL2		N	Stromal TILs		Sum
			≤6%	>6%	
CCL2	≤6%	N	47	51	98
		% within CCL2	48.0%	52.0%	100.0%
		% within stromal TILs	79.7%	46.8%	58.3%
	% of the sum	28.0%	30.4%	58.3%	
	>6%	N	12	58	70
		% within CCL2	17.1%	82.9%	100.0%
% within stromal TILs		20.3%	53.2%	41.7%	
% of the sum	7.1%	34.5%	41.7%		
All	N		59	109	168
	% within CCL2		35.1%	64.9%	100.0%
	% within stromal TILs		100.0%	100.0%	100.0%
	% of the sum		35.1%	64.9%	100.0%

Chi-squared test,  $p < 0.001$ .

**Table S4.** Cross Table: Correlation of CCL2 staining and CD68 (pan macrophage marker).

CCL2		N	CD68		Sum
			log2 median ≤10.4	log2 median >10.4	
CCL2	≤6%	N	65	33	98
		% within CCL2	66.3%	33.7%	100.0%
		% within CD68	79.3%	38.4%	58.3%
	% of the sum	38.7%	19.6%	58.3%	
	>6%	N	17	53	70
		% within CCL2	24.3%	75.7%	100.0%
% within CD68		20.7%	61.6%	41.7%	
% of the sum	10.1%	31.5%	41.7%		
All	N		82	86	168
	% within CCL2		48.8%	51.2%	100.0%
	% within CD68		100.0%	100.0%	100.0%
	% of the sum		48.8%	51.2%	100.0%

Chi-squared test,  $p < 0.001$ .

**Table S5.** Cross Table: Correlation of CCL2 staining and CD163 (M2-like macrophage marker).

CCL2		N	CD163		Sum
			log2 median ≤10.34	log2 median >10.34	
CCL2	≤6%	N	61	37	98
		% within CCL2	62.2%	37.8%	100.0%
		% within CD163	72.6%	44.0%	58.3%
	% of the sum	38.7%	19.6%	58.3%	
	>6%	N	23	47	70
		% within CCL2	32.9%	67.1%	100.0%
% within CD163		27.4%	56.0%	41.7%	
% of the sum	13.7%	28.0%	41.7%		
All	N		84	84	168
	% within CCL2		50.0%	50.0%	100.0%
	% within CD163		100.0%	100.0%	100.0%
	% of the sum		50.0%	50.0%	100.0%

Chi-squared test,  $p < 0.001$ .



**Table S6.** Cross Table: Correlation of CCL2 staining and PD-L1 in TCs.

CCL2		CCL2	PD-L1		Sum
			0	>0	
CCL2	≤6%	N	72	26	98
		% within CCL2	73.5%	26.5%	100.0%
		% within PD-L1	70.6%	39.4%	58.3%
	>6%	% of the sum	42.9%	15.5%	58.3%
		N	30	40	70
		% within CCL2	42.9%	57.1%	100.0%
	All	% within PD-L1	29.4%	60.6%	41.7%
		% of the sum	17.9%	23.8%	41.7%
		N	102	66	168
All	% within CCL2	60.7%	39.3%	100.0%	
	% within PD-L1	100.0%	100.0%	100.0%	
	% of the sum	60.7%	39.3%	100.0%	

Chi-squared test,  $p < 0.001$ .

**Table S7.** Cross Table: Correlation of CCL2 staining and PD-L1 in ICs.

CCL2		CCL2	PD-L1		Sum
			≤1	>1	
CCL2	≤6%	N	74	24	98
		% within CCL2	75.5%	24.5%	100.0%
		% within PD-L1	78.7%	32.4%	58.3%
	>6%	% of the sum	44.0%	14.3%	58.3%
		N	20	50	70
		% within CCL2	28.6%	71.4%	100.0%
	All	% within PD-L1	21.3%	67.6%	41.7%
		% of the sum	11.9%	29.8%	41.7%
		N	94	74	168
All	% within CCL2	56.0%	44.0%	100.0%	
	% within PD-L1	100.0%	100.0%	100.0%	
	% of the sum	56.0%	44.0%	100.0%	

Chi-squared test,  $p < 0.001$ .

**Table S8.** Univariate Cox's regression analysis: Association of clinicopathological and molecular parameters with prognosis.

	Univariate Cox's Regression Analysis							
	N	OS		DSS		N	RFS	
		RR	$p$	RR	$p$		RR	$p$
<b>Age</b>	168					167		
>71 years vs. ≤71 years	87 vs. 81	1.37	0.087	1.20	0.383	86 vs. 81	1.18	0.425
<b>Pathol. Tumor Stage</b>	168					167		
pT3+4 vs pT2	124 vs. 44	1.88	<b>0.005</b>	2.40	<b>0.002</b>	123 vs. 44	2.48	<b>0.001</b>
<b>Pathol. Nodal Stage</b>	153					152		
pN0 (reference)	104	1		1		103	1	
pN1+2	49	2.48	<b>&lt;0.001</b>	2.99	<b>&lt;0.001</b>	49	3.08	<b>&lt;0.001</b>
pNX	15	5.27	<b>&lt;0.001</b>	7.02	<b>&lt;0.001</b>	15	7.04	<b>&lt;0.001</b>
<b>Chemotherapy</b>	168					167		

CT+ vs. CT-	46 vs. 122	1.06	0.775	1.29	0.250	121	1.48	0.074
<b>Molecular Subtype</b>	168					167		
basal (reference)	79	1		1		79	1	
double negative	4	1.82	0.249	2.23	0.184	4	2.02	0.246
luminal	69	1.21	0.343	1.56	0.055	68	1.58	<b>0.048</b>
luminal EMT-p53-like	16	1.87	<b>0.042</b>	2.14	<b>0.031</b>	16	2.18	<b>0.027</b>

Abbreviations: CT—adjuvant chemotherapy. Significant values are in bold.