

Supplementary Materials

Should the Number of Metastatic Pelvic Lymph Nodes be Integrated into the 2018 Figo Staging Classification of Early Stage Cervical Cancer?

Luigi Pedone Anchora, Vittoria Carbone, Valerio Gallotta, Francesco Fanfani, Francesco Cosentino, Luigi Carlo Turco, Camilla Fedele, Nicolò Bizzarri, Giovanni Scambia and Gabriella Ferrandina

Table S1. Distribution of pathological features of patients with stage IIIC1p according to the number of metastatic pelvic lymph nodes.

Features	Patients with Metastatic Pelvic Lymph Nodes		p Value
	N1-2	N>2	
Patients	59	30	
Histology			
Squamous	38 (64.4)	18 (60.0)	0.419
Other	21 (35.6)	12 (40.0)	
Grading			
G1/ G2	23 (39.0)	13 (43.3)	0.697
G3	36 (61.0)	17 (56.7)	
Tumor Size			
≤2 cm	13 (22.0)	7 (23.3)	0.026
>2 cm ≤ 4 cm	42 (71.2)	14 (46.7)	
>4 cm	4 (6.8)	9 (30.0)	
LVSI			
No	16 (27.1)	4 (13.3)	0.148
Yes	43 (72.9)	26 (86.7)	
Involvement of the upper third of vagina			
No	49 (83.1)	27 (90.0)	0.380
Yes	10 (16.9)	3 (10.0)	
Parametrial Involvement			
No	51 (86.4)	21 (70.0)	0.062
Yes	8 (13.6)	9 (30.0)	
N. pelvic lymph nodes removed			
median (range)	28.0 (10-83)	28.5 (8-92)	0.828

Table S2. Distribution of pattern of recurrence according to the status, and the number of metastatic pelvic lymph nodes

Pelvic Lymph Node Status	All	Pattern of Recurrence(s)					p Value
		Pelvic Central	Pelvic Lateral	Aortic	Distant	Mixed	
Negative	69						
N1-2	11	35 (50.7)	8 (11.6)	-	17 (24.6)	11 (15.9)	0.039
N>2	30	3 (27.3)	-	1 (9.1)	4 (36.4)	3 (27.3)	
n.a.	7	-	2 (6.7)	1 (3.3)	4 (13.3)	3 (10.0)	

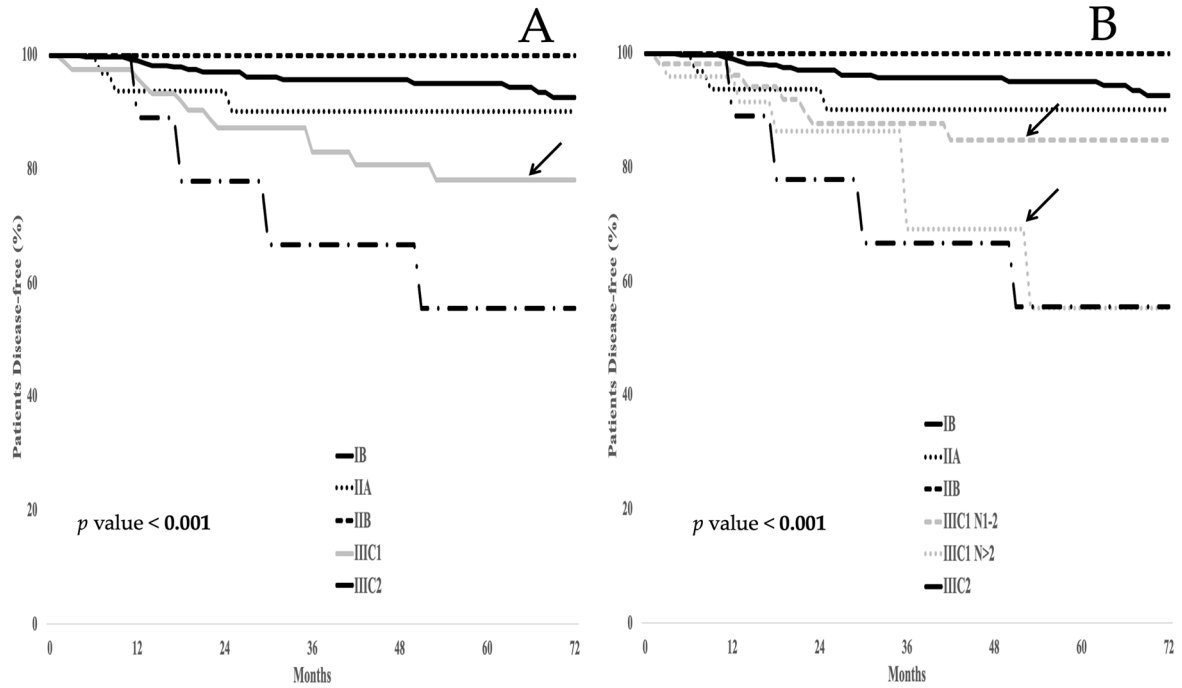


Figure 1. (A) Overall survival in the whole series according to the FIGO 2018 staging system; (B) OS in the whole series according to the proposed FIGO 2018 staging system. Arrows highlight the DFS curve for stage IIC1 in panel A, as well as the subgroups N1-2 and N > 2 in the panel B.



© 2020 by the authors. Licensee MDPI, Basel, Switzerland. This article is an open access article distributed under the terms and conditions of the Creative Commons Attribution (CC BY) license (<http://creativecommons.org/licenses/by/4.0/>).