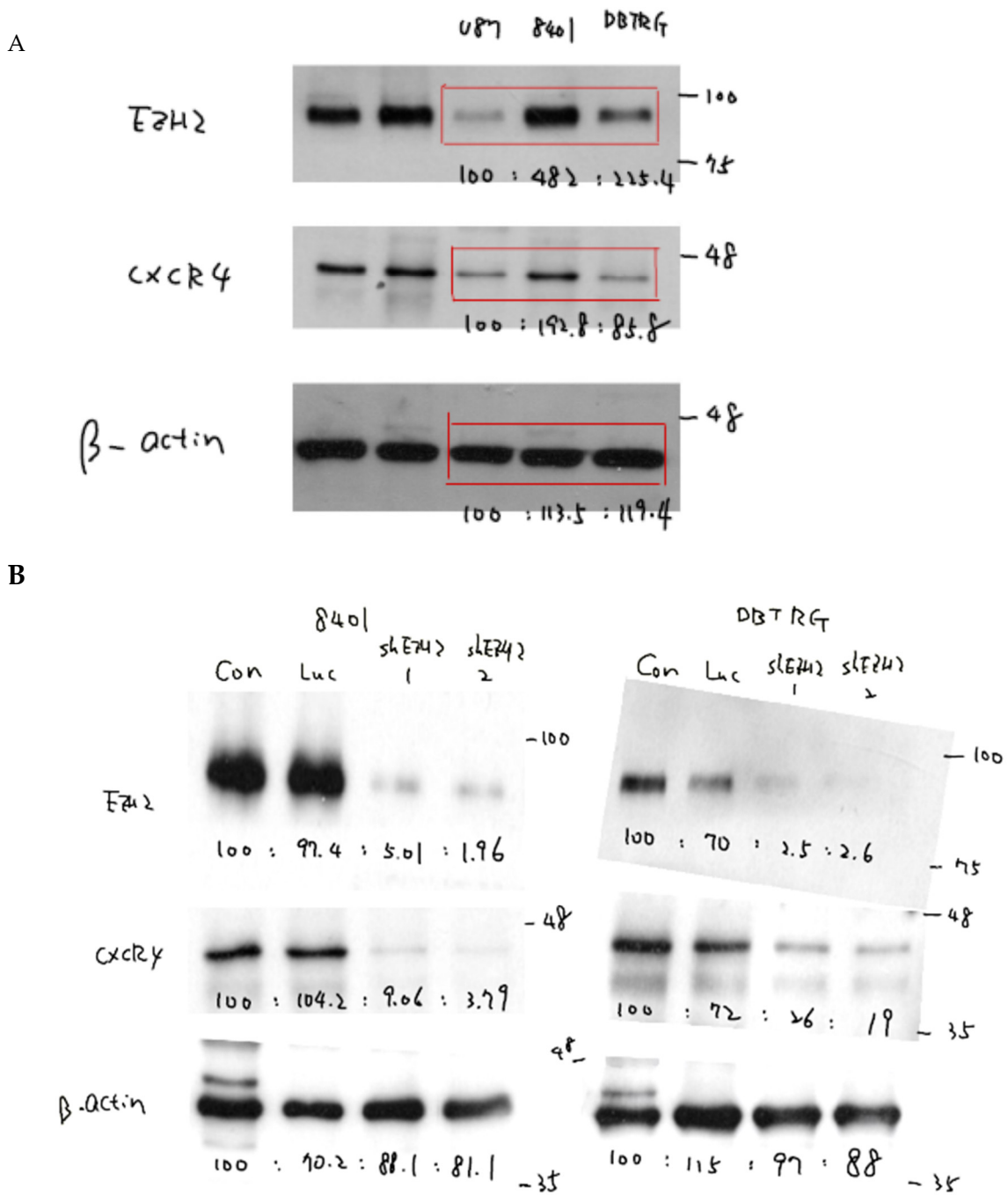


Supplementary Materials

Epigenetic Silencing of miR-9 Promotes Migration and Invasion by EZH2 in Glioblastoma Cells

Yi-Chung Chien, Jia-Ni Chen, Ya-Huey Chen, Ruey-Hwang Chou, Han-Chung Lee and Yung-Luen Yu



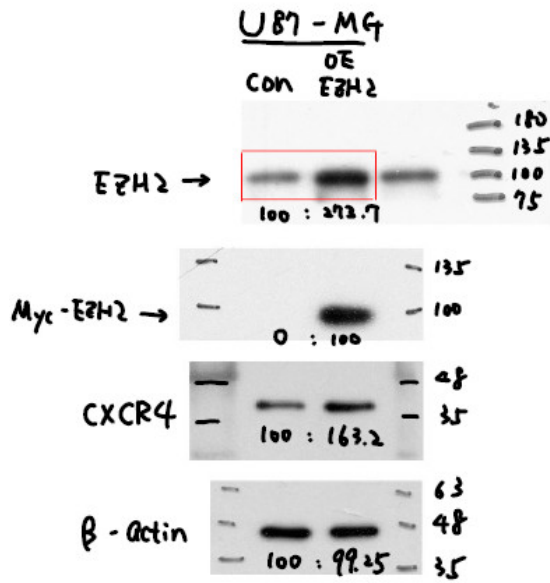
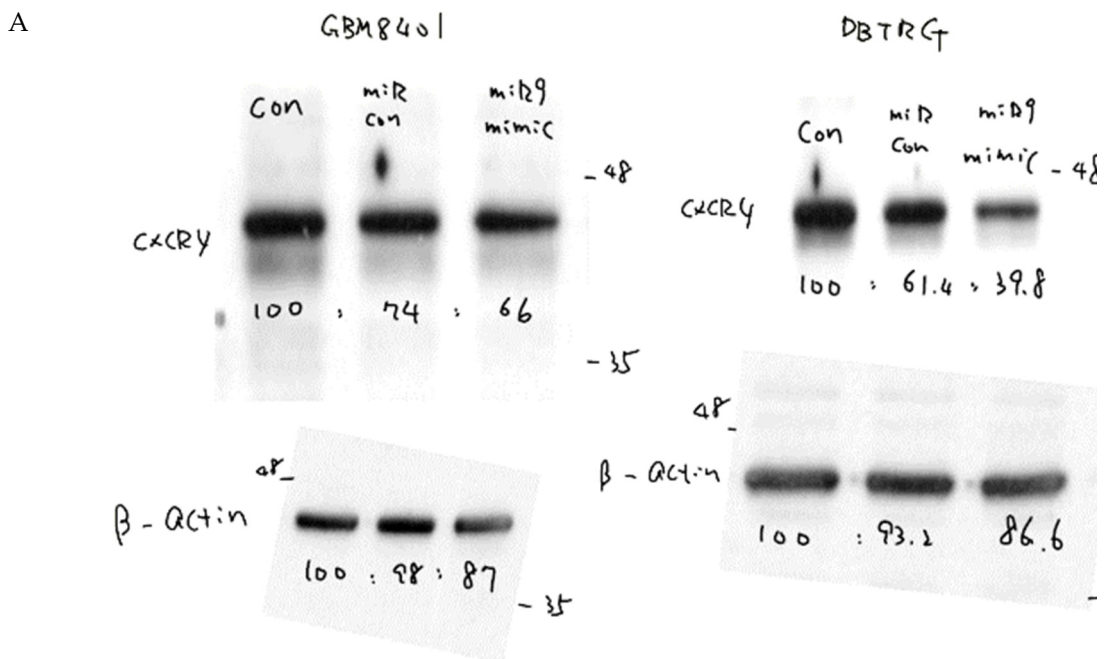


Figure S1. Raw data of Western blots from Figure 2. (A) Raw data from Figure 2B. (B) Raw data from Figure 2D.



B

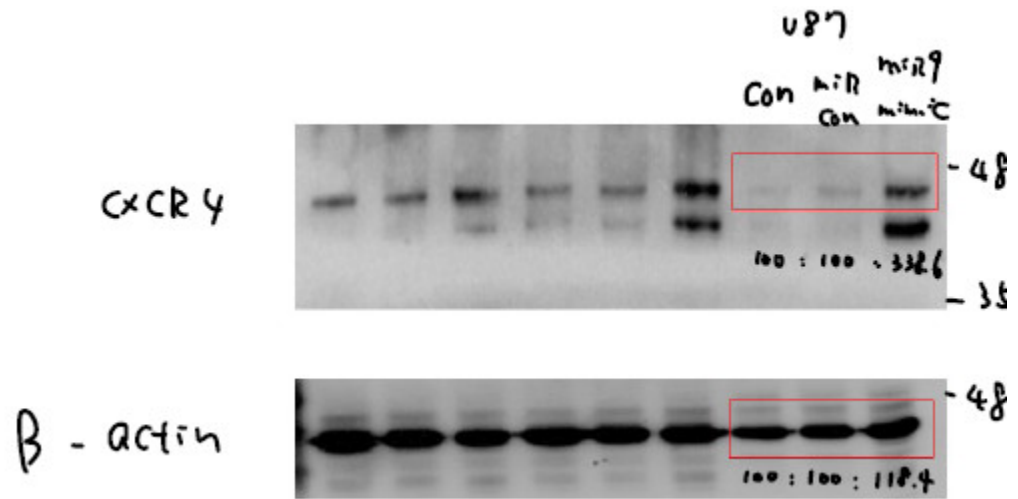
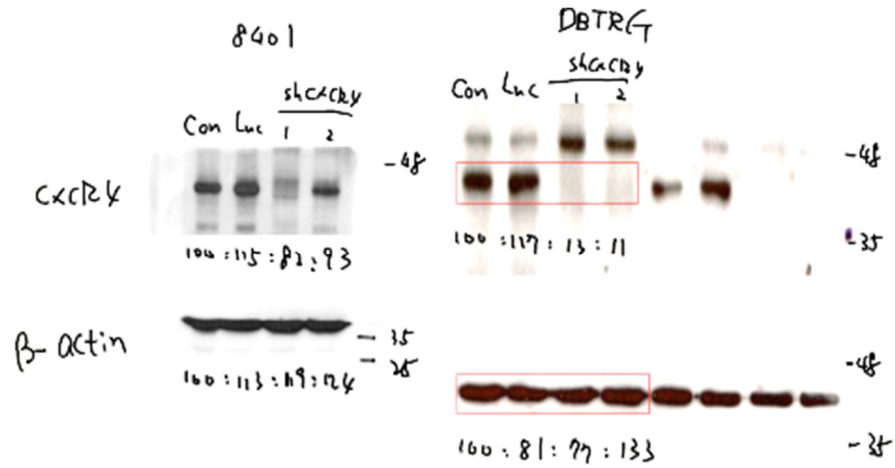


Figure S2. Raw data of Western blots from Figure 3. (A) Raw data from Figure 3F. (B) Raw data from Figure 3I.

A



B

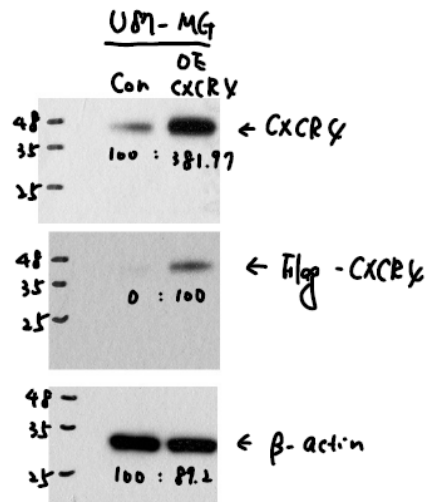


Figure S3. Raw data of Western blots from Figure 5. (A) Raw data from Figure 5B. (B) Raw data from Figure 5D.



© 2020 by the authors. Licensee MDPI, Basel, Switzerland. This article is an open access article distributed under the terms and conditions of the Creative Commons Attribution (CC BY) license (<http://creativecommons.org/licenses/by/4.0/>).