

Supplementary Materials: Multiple Myeloma-Derived Extracellular Vesicles Induce Osteoclastogenesis through the Activation of the XBP1/IRE1 α Axis

Lavinia Raimondi, Angela De Luca, Simona Fontana, Nicola Amodio, Viviana Costa, Valeria Carina, Daniele Bellavia, Stefania Raimondo, Sergio Siragusa, Francesca Monteleone, Riccardo Alessandro, Milena Fini and Gianluca Giavaresi

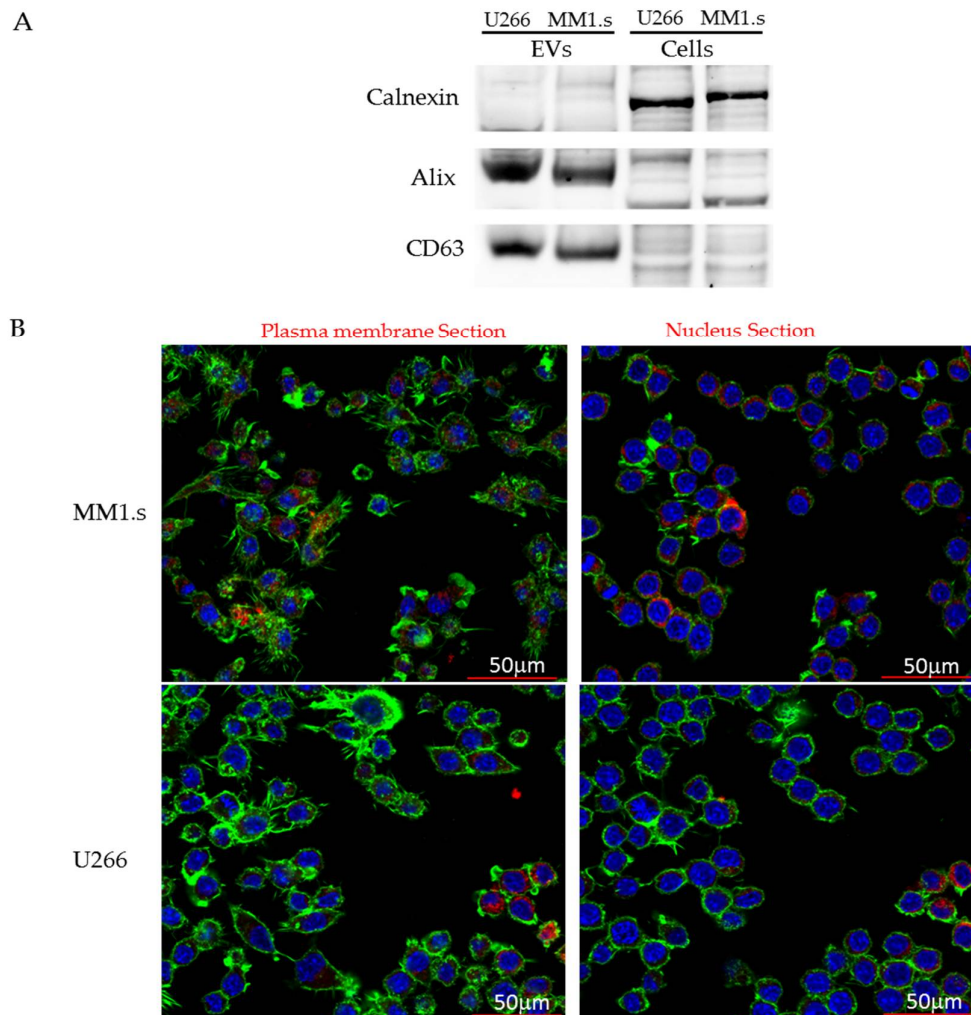


Figure S1. A. Western blotting analysis of Alix, CD63 and Calnexin in U266-, MM1.s-EVs and cellular lysates. B. Uptake of MM-Evs by Raw264.7 cells; analysis at confocal microscopy of Raw264.7 cells treated for 6 hours with 25 μ g/ml of MM1.s- and U266-EVs. Raw264.7 cells were stained with Actin green (green), nuclear counterstaining was performed using Hoescht (blue) and exosomes were labelled with PKH26 (red). Scale bar = 50 μ m.

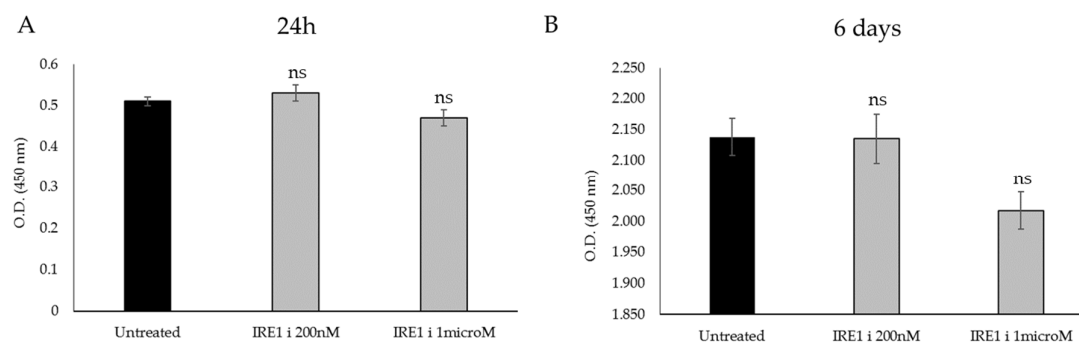


Figure S2. Cell viability assay was evaluated through WST-1 assay of Raw264.7 cells untreated or Table 200. nm or 1microM of IRE1a inhibitor, at 24 hours (A) and 6 days (B) of culture.

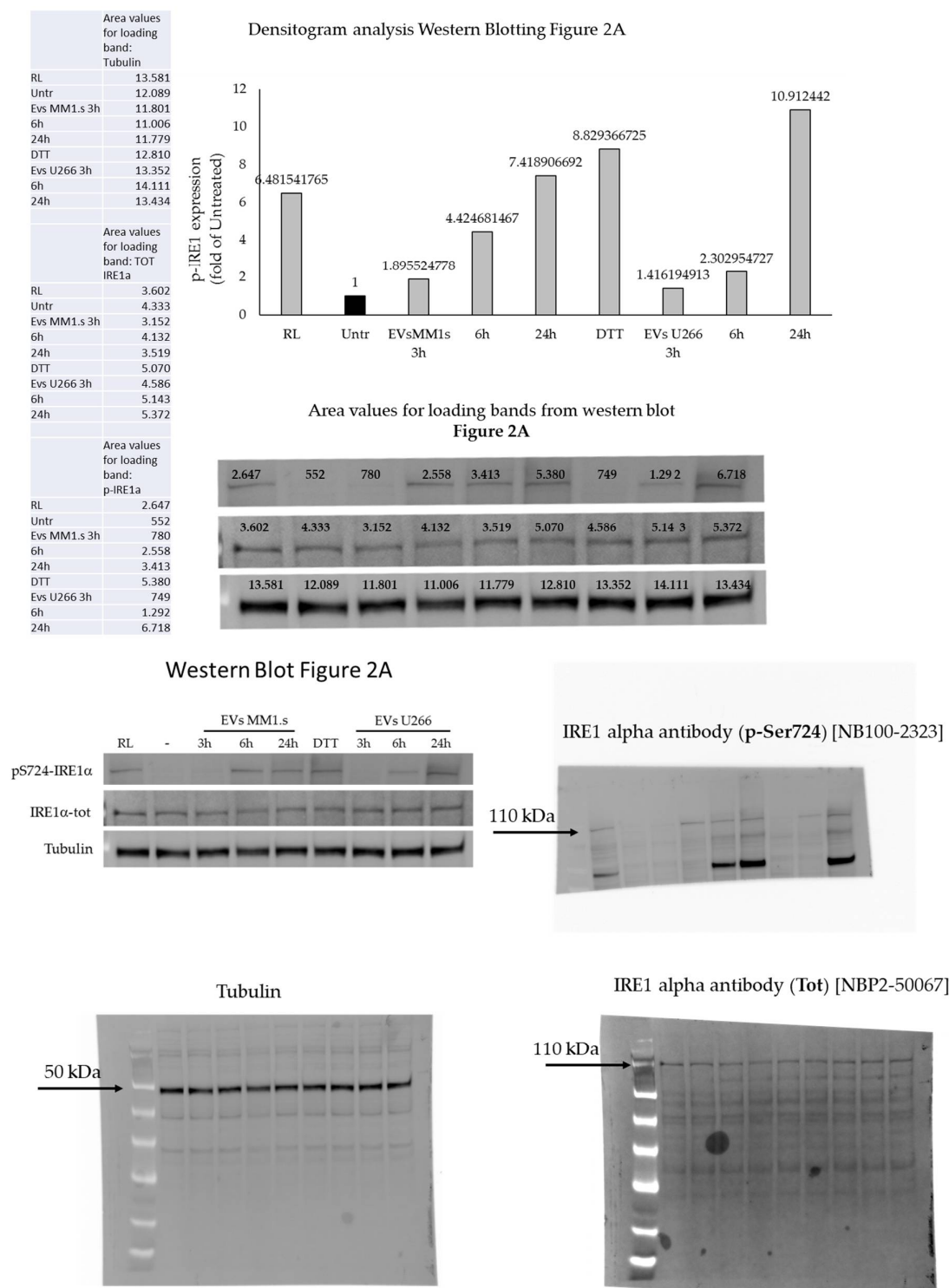
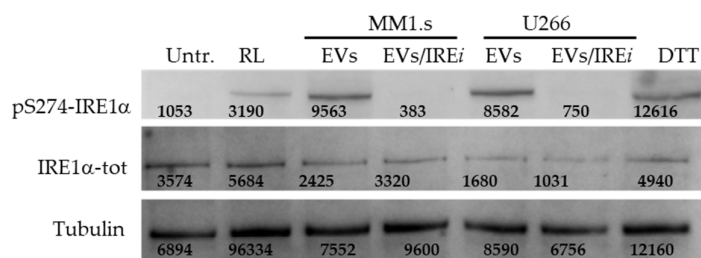
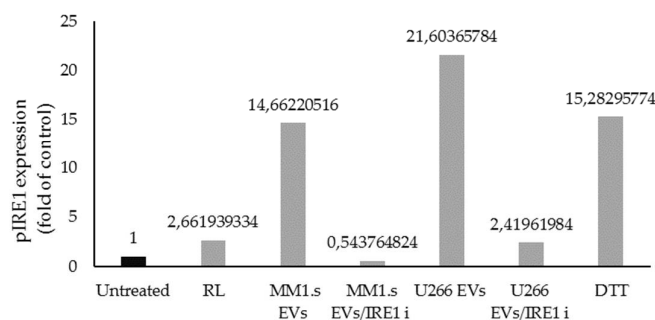
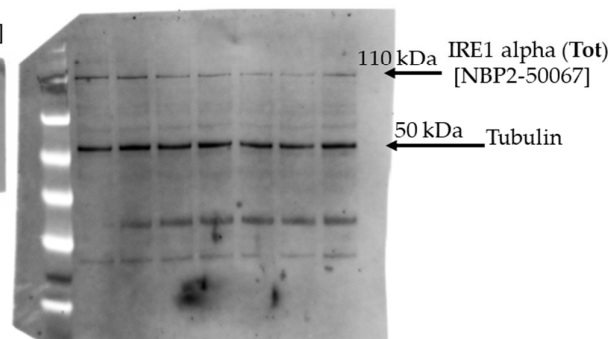
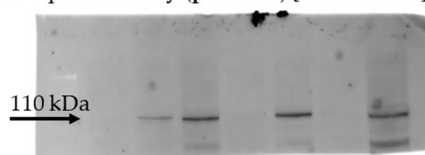


Figure S3. Whole Western Blot for Figure 2A.

Area values for loading bands from western blot **Figure 3A**Densitogram analysis Western Blotting **Figure 3A**

Area values for loading band:	Area values for loading band:	Area values for loading band:
Tubulin	TOT IRE1 a	P-IRE1 a
6.894	3.574	1.053
9.634	5.684	3.190
7.552	2.425	9.563
9.600	3.329	383
8.590	1.680	8.582
6.756	1.031	750
12.160	4.942	12.616

IRE1 alpha antibody (p-Ser724) [NB100-2323]

**Figure S4.** Whole Western Blot for Figure 3A.