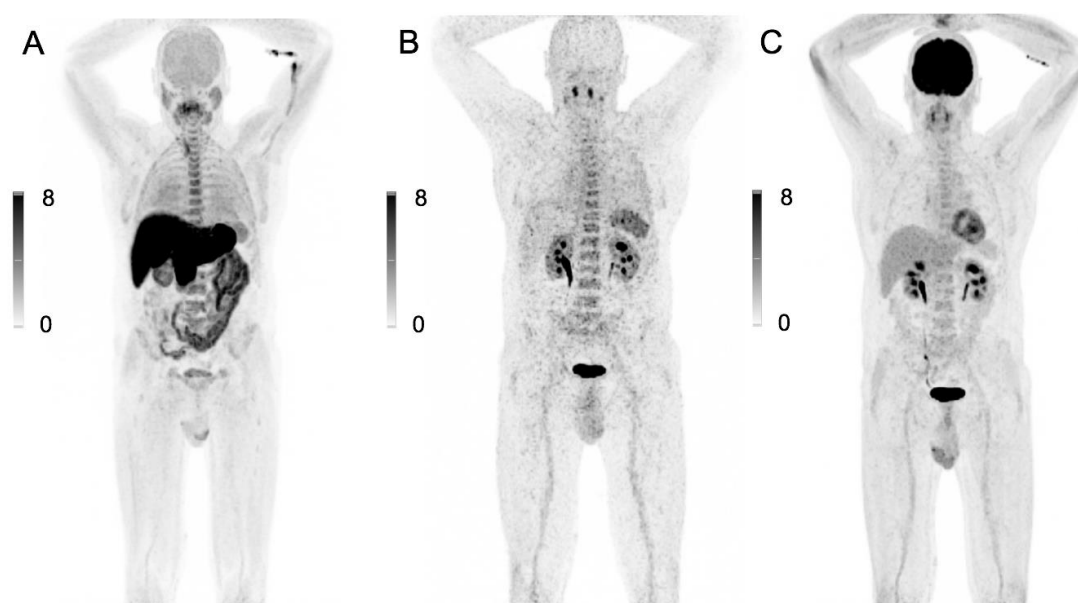


Supplementary Materials

## 18F-FDG, 11C-Methionine, and 68Ga-Pentixafor PET/CT in Patients with Smoldering Multiple Myeloma: Imaging Pattern and Clinical Features

Xiang Zhou, Alexander Dierks, Olivia Kertels, Malte Kircher, Andreas Schirbel, Samuel Samnick, Andreas K Buck, Sebastian Knorz, David Böckle, Lukas Scheller, Janin Messerschmidt, Mohammad Barakat, K Martin Kortüm, Leo Rasche, Hermann Einsele and Constantin Lapa



**Figure S1.** 11C-Methionine, 68Ga-Pentixafor, and 18F-FDG PET/CT scans in a patient 10 with smoldering multiple myeloma (SMM). The figure shows a patient (No. 7 in Table 1) with SMM 11 who had a bone marrow plasma cell infiltration rate of 10%. All three scans, i.e. 11C-Methionine (A), 12 68Ga-Pentixafor PET/CT (B) and 18F-FDG PET/CT (C) scans showed physiological tracer uptake in 13 the entire skeleton.



© 2020 by the authors. Licensee MDPI, Basel, Switzerland. This article is an open access article distributed under the terms and conditions of the Creative Commons Attribution (CC BY) license (<http://creativecommons.org/licenses/by/4.0/>).