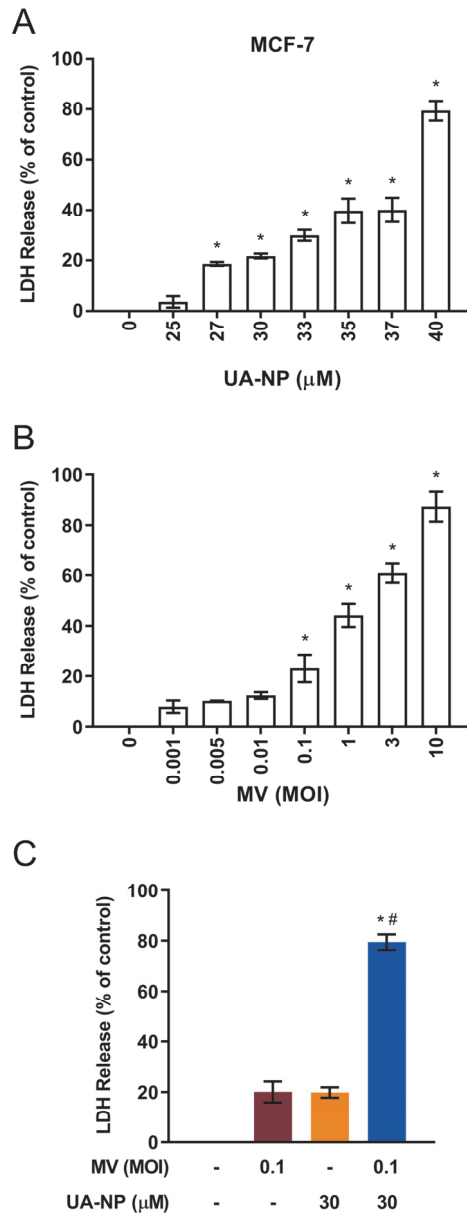
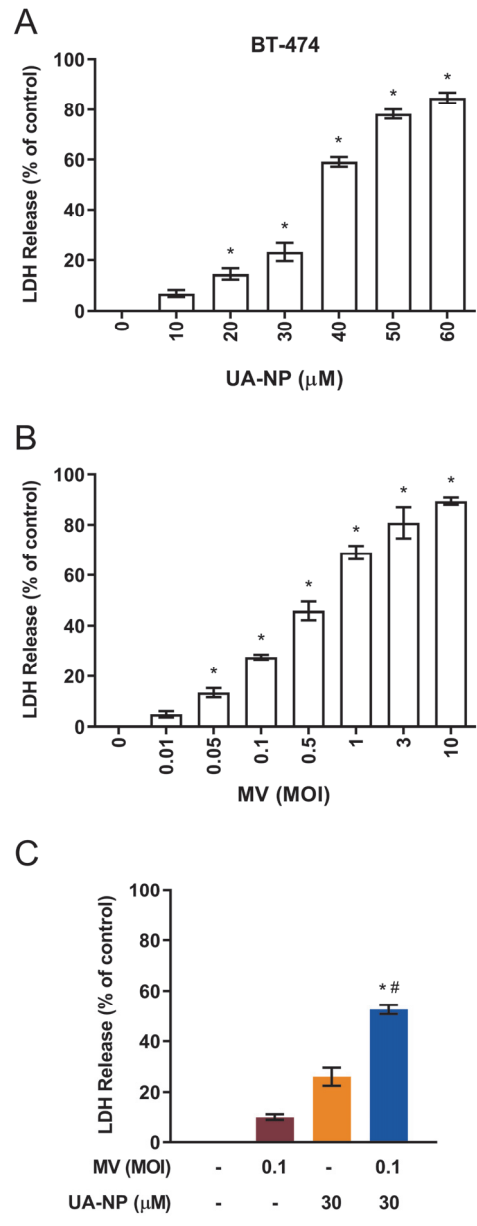


Supplementary Figure S1. LDH release assay to assess cell viability of UA-NP and oncolytic MV co-treatment in MCF-7 human breast cancer cells.



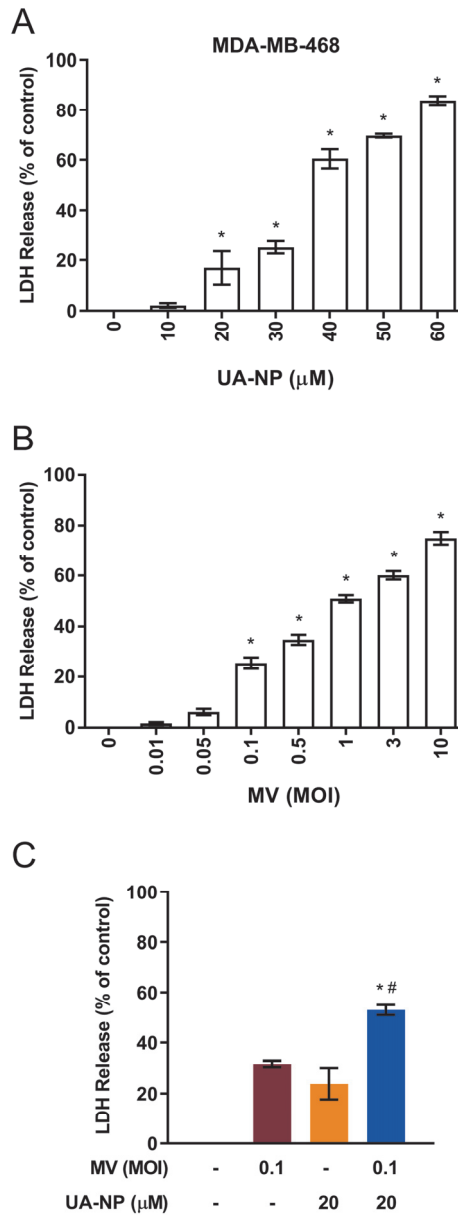
MCF-7 cells seeded in 96-well plates (10^4 cells per well) were treated with (A) UA-NP (25–40 μM), (B) MV (MOI 0.001–10), or (C) concurrently treated with MV (MOI 0.1) and/or UA-NP (30 μM) for 5 days before analyzing cell viability using lactate dehydrogenase (LDH) cytotoxicity detection kit (Takara Bio; Kusatsu, Japan) following the manufacturer’s instructions. Briefly, supernatant was transferred to new 96-well plates, mixed with reaction substrates, and incubated at 37 °C for 30 min before the absorbance was measured at 490 nm using an ELISA plate reader. All data shown are means \pm SEM (* $p < 0.05$ in panels A and B; * $p < 0.05$ compared with MV, # $p < 0.05$ compared with UA treatment in panel C) from three independent experiments.

Supplementary Figure S2. LDH release assay to assess cell viability of UA-NP and oncolytic MV co-treatment in BT-474 human breast cancer cells.



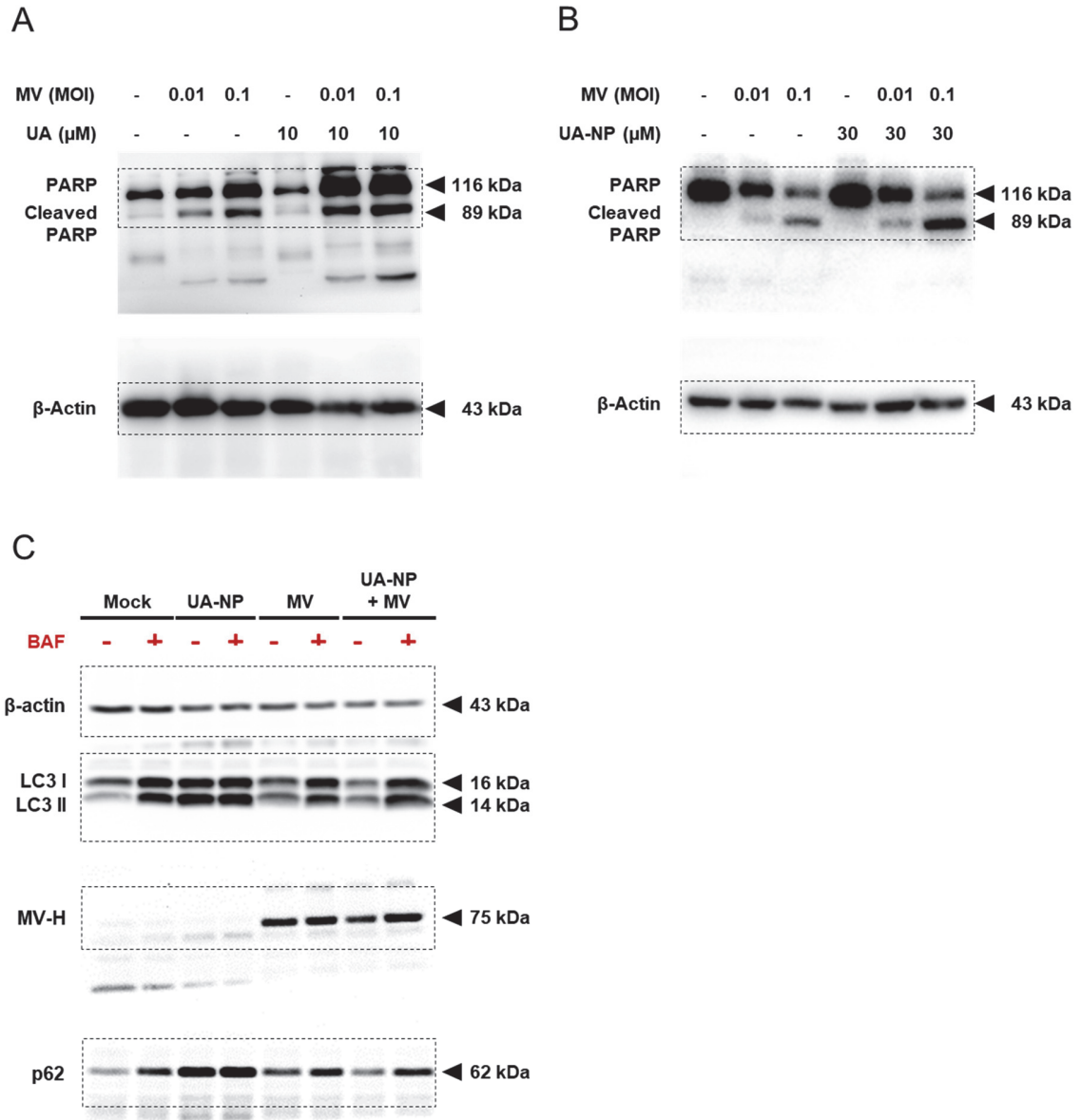
BT-474 cells seeded in 96-well plates (10^4 cells per well) were treated with (A) UA-NP (10–60 μ M), (B) MV (MOI 0.01–10), or (C) concurrently treated with MV (MOI 0.1) and/or UA-NP (30 μ M) for 5 days before analyzing cell viability using LDH cytotoxicity detection kit (Takara Bio) as described in Supplementary Figure S1. All data shown are means \pm SEM (* $p < 0.05$ in panels A and B; * $p < 0.05$ compared with MV, # $p < 0.05$ compared with UA treatment in panel C) from three independent experiments.

Supplementary Figure S3. LDH release assay to assess cell viability of UA-NP and oncolytic MV co-treatment in MDA-MB-468 human breast cancer cells.



MDA-MB-468 cells seeded in 96-well plates (10^4 cells per well) were treated with (A) UA-NP (10–60 μM), (B) MV (MOI 0.01–10), or (C) concurrently treated with MV (MOI 0.1) and/or UA-NP (20 μM) for 5 days before analyzing cell viability using LDH cytotoxicity detection kit (Takara Bio) as described in Supplementary Figure S1. All data shown are means \pm SEM (* $p < 0.05$ in panels A and B; * $p < 0.05$ compared with MV, # $p < 0.05$ compared with UA treatment in panel C) from three independent experiments.

Supplementary Figure S4. Full-length blots.



Full-length blots: (A) Figure 3C, (B) Figure 6C, and (C) Figure 7.